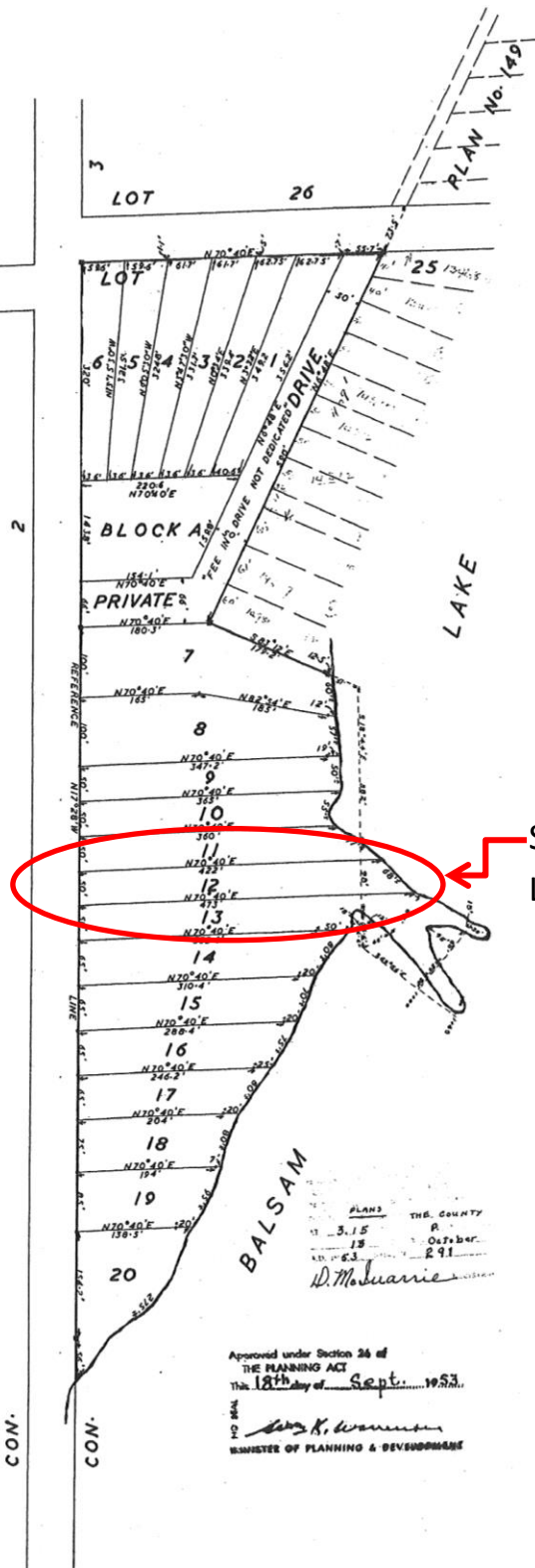


to

REPORT PLAN2018-020FILE NO: D30-2018-003Subject
Lands

291

PLAN

OF SUBDIVISION OF
PART OF W. 1/2 LOT 25
CONCESSION 3
TWP. OF FENELON
SCALE: 100' = 1"

NOTE: Square iron monuments show true & wooden stakes

OWNER'S CERTIFICATE

I hereby certify that this survey and plan have been made
in my behalf and in accordance with my instructions

A. D. McQuinn Percy C. Webster
WITNESSES

County of York
to wit

1. *Archibald Donald McQuinn* of the County of York, do hereby certify that I was personally present and did see this plan and a duplicate duly signed by *Percy C. Webster*
2. That the said plan and duplicate were signed by the said part at the City of Toronto, in the County of York
3. That I know the said part
4. That I am a subscribing witness to the said signing

Sworn before me at *Toronto, Ontario*
this *12th* day of *February*, 1922
A. D. McQuinn
A Commissioner, etc.

SURVEYOR'S CERTIFICATE

- (a) I was present at and did personally superintend the survey represented by this plan
- (b) this plan accurately shows the manner in which the lands (edged in red) have been surveyed and subdivided by me
- (c) Every angle of the exterior boundary of the plan is defined in the survey thereof by a monument and a monument is placed at one angle of each street intersection shown on the plan
- (d) I have indicated on the plan the position and form of each of the monuments
- (e) the monuments conform in all respects to the requirements of section 1 of the Survey Act
- (f) the survey was made by me between the *12th* day of *February*, and the *12th* day of *February*
- (g) the survey has been accurately made in accordance with all the provisions of the Survey Act and the Registry Act relating thereto

Dated at *Lindsay* the *12th* day of *February*, A.D. 1922
P. S. Smith
Ontario Land Surveyor

I hereby certify that this plan represents a true copy of the original plan in connection with the survey thereof.

P. S. Smith
Ontario Land Surveyor

CERTIFIED TO BE A TRUE COPY OF PLAN
REGISTERED IN THE REGISTRY OFFICE FOR THE
REGISTRY DIVISION OF

DATE

REGISTRAR