

# Community-Based Early Years and Child Care Capital Program

Bobcaygeon

January 17, 2018



# Key Points

---

## Bobcaygeon

- There are only 12 licensed spaces available for the 369 infants within a 30 minute drive of Bobcaygeon
- Within a 30 minute drive of Bobcaygeon, only 8% of infants, toddlers and preschoolers up to and including those 4 years of age have access to licensed child care spaces
- Most commuters in the Bobcaygeon area of Kawartha Lakes remain in the City of Kawartha Lakes to work

# Licensed Child Care Spaces

Within 30 minutes of the  
Bobcaygeon Child Care Centre

This table includes all centre-based licensed child care spaces for infants, toddlers and preschoolers within 30 minutes of Bobcaygeon. There are three child care centres in the area, one in Bobcaygeon, one approximately 17 minutes (18 kilometres) away in Fenelon Falls and one in Buckhorn, 19 minutes (25 kilometres) away.

	Buckhorn	Bobcaygeon	Fenelon Falls	Total
Infants (0 up to 18 months)	3	9	0	12
Toddlers (18 months up to 30 months)	5	10	15	30
Preschool (30 months to 4 years*)	5	32	16	53
Total	13	51	31	95

\* The preschool age grouping is shown up to and including those 4 years of age. A majority of children begin school in year 1 of Kindergarten in September of the year they turn 4 years of age. While the population of preschool age children is up to and including those 4 years of age, the licensed capacity includes those spaces available to children up to 6 years of age.

# Licensed Spaces to Children 0 to 4

Within 30 minutes of the  
Bobcaygeon Child Care Centre

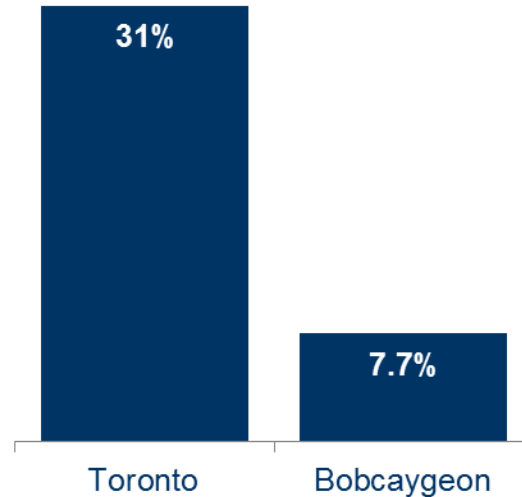
	Number of Children	Licensed Spaces	(%)
Infants (0 up to 18 months)	369	12	3.3
Toddlers (18 months up to 30 months)	246	30	12.2
Preschool (30 months to 4 years*)	615	53	8.6
Total	1230	95	7.7

\* The preschool age grouping is shown up to and including those 4 years of age. A majority of children begin school in year 1 of Kindergarten in September of the year they turn 4 years of age. While the population of preschool age children is up to and including those 4 years of age, the licensed capacity includes those spaces available to children up to 6 years of age.

# Licensed Spaces to Children 0 to 4

This graph shows that there are far fewer licensed child care spaces available for children 0 to 4 years of age in the Bobcaygeon area when compared to the City of Toronto.

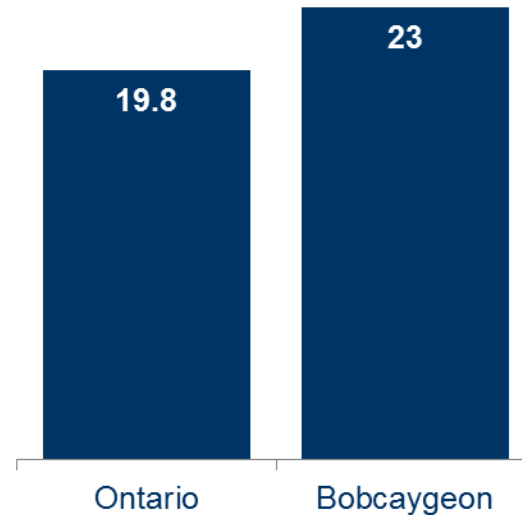
The percentage of licensed infant, toddler and preschool child care spaces to the number of children 0 to 4



# Children 0 to 5 in Low-Income After-Tax Households

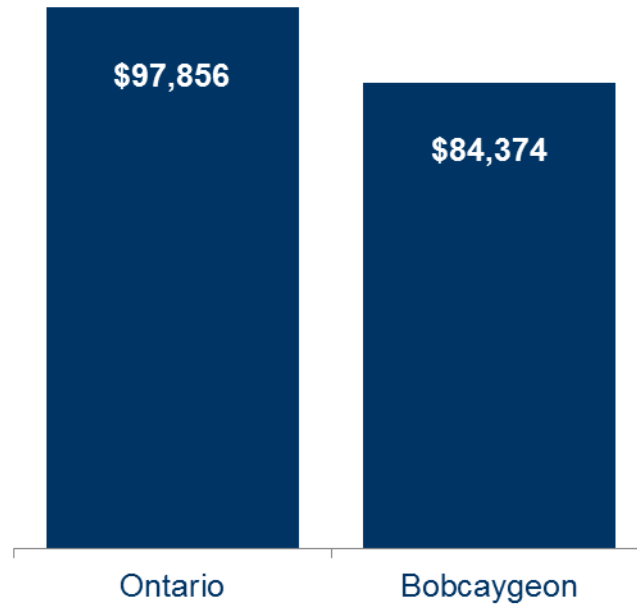
---

The percentage of children 0 to 5 years of age living in after-tax low-income households



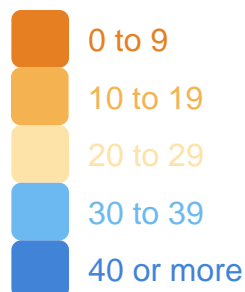
# Average Total Household Income

---

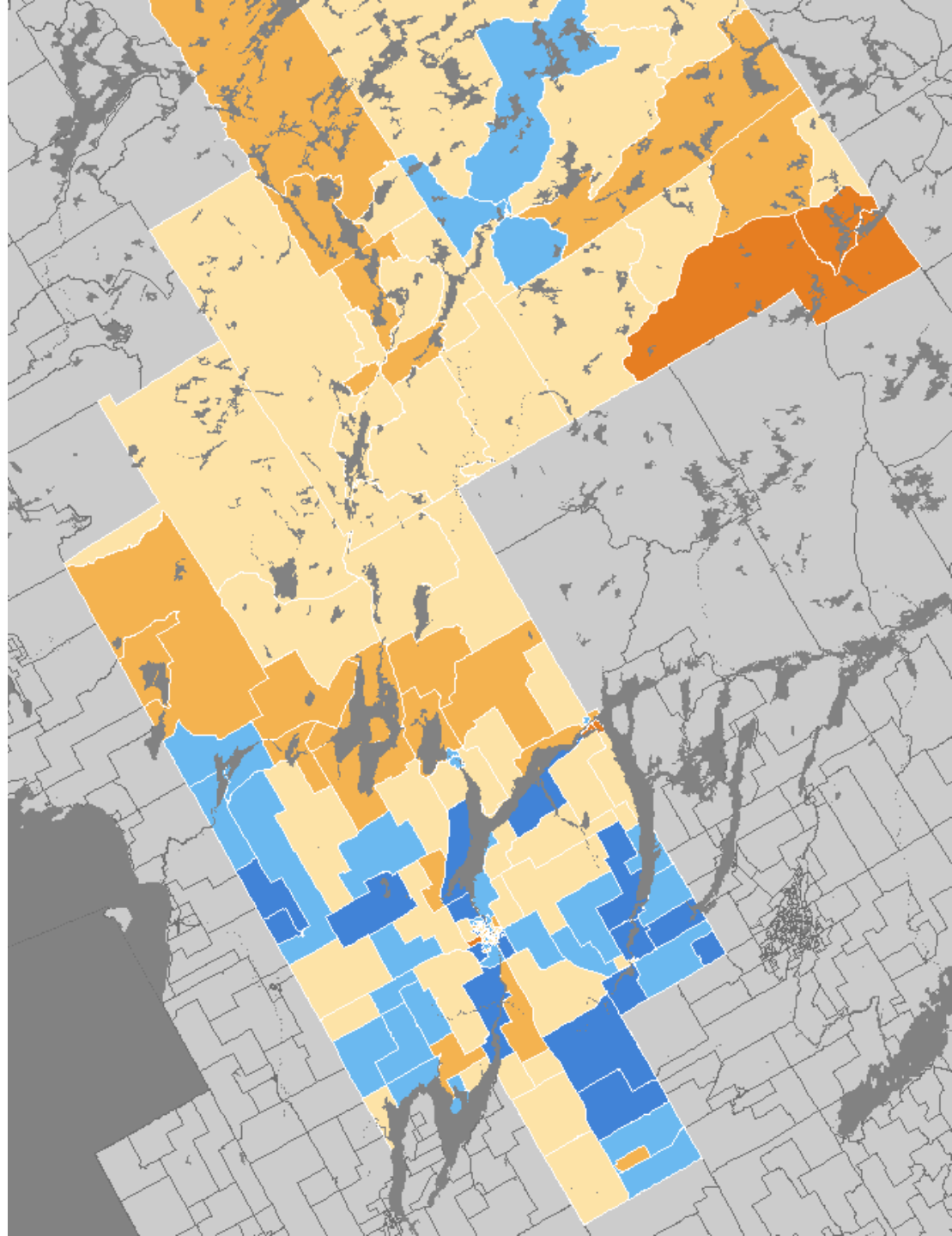


# Population 0 to 4 Years

## County of Haliburton & the City of Kawartha Lakes



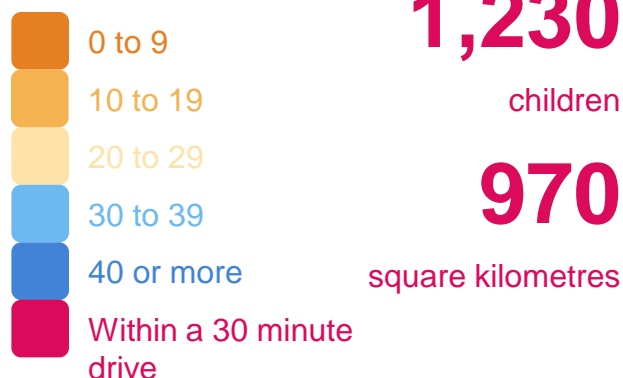
This map shows each of the 140 dissemination areas within the City of Kawartha Lakes and the County of Haliburton, coded by the number of children 0 to 4 years age based on the 2016 census.



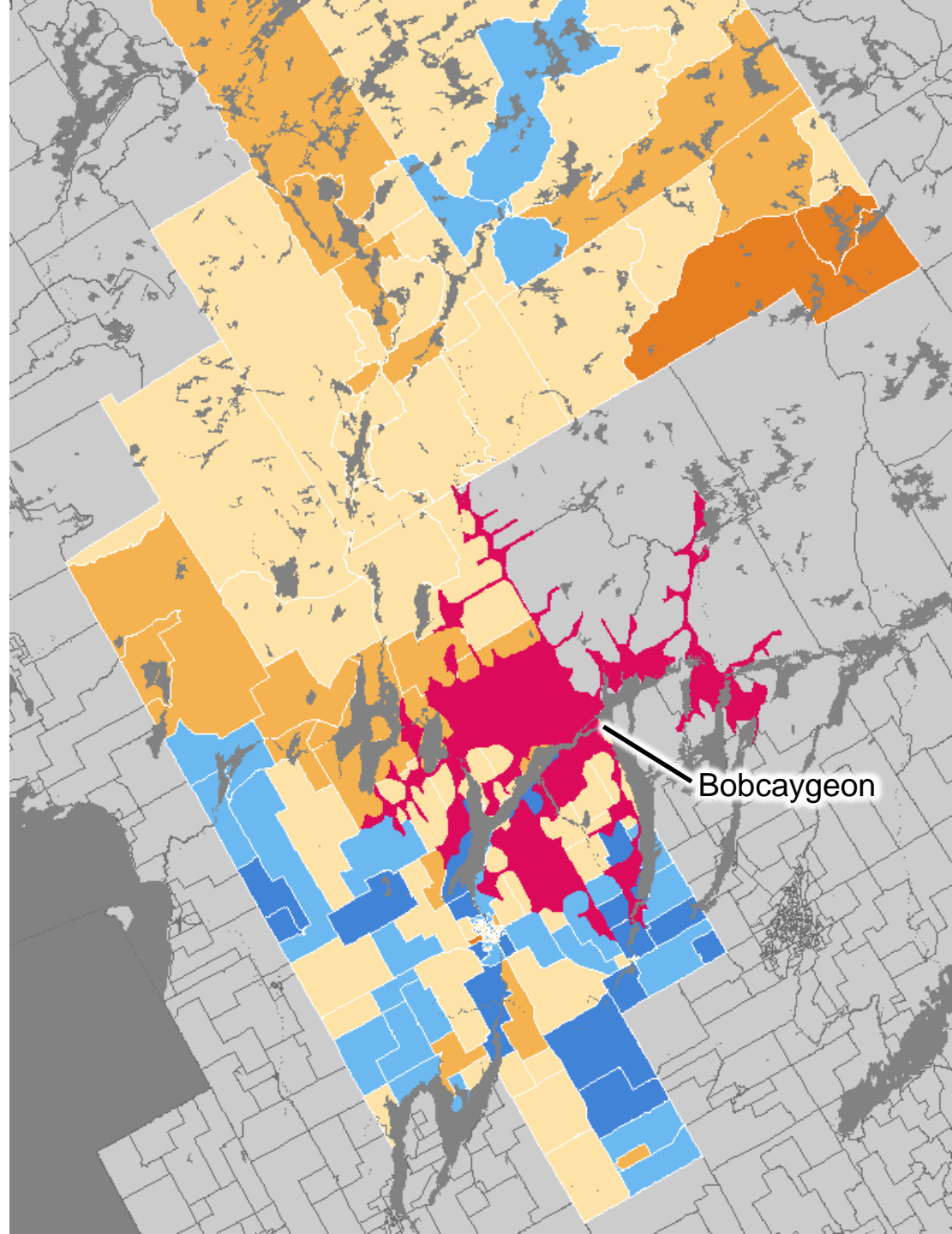


# Population 0 to 4 Years

Within 30 minutes of the  
Bobcaygeon Child Care Centre



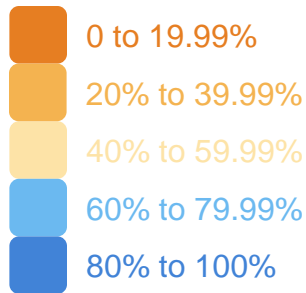
The total population of children 0 to 4 years of age within a 30 minute drive of the Bobcaygeon Child Care Centre is 1,230. This includes all dissemination areas within 30 minutes in the County of Haliburton and the County of Peterborough.



The estimations of the 30 minute drive isochrones were calculated using [www.freemaptools.com/how-far-can-i-travel.com](http://www.freemaptools.com/how-far-can-i-travel.com) at 65km/h within 30 minutes and using [www.openrouteservice.org](http://www.openrouteservice.org) at 80km/h within 30 minutes with Open Street Map.

# Commuting within Census Division

## Bobcaygeon



Commuting destination for the employed labour force aged 15 years and over with a usual place of work within the same census division.

The two census divisions within our service area are Haliburton County and the City of Kawartha Lakes.

This map shows the percentage of employed labour force that travelled to their regular place of work within the census division where they live.

