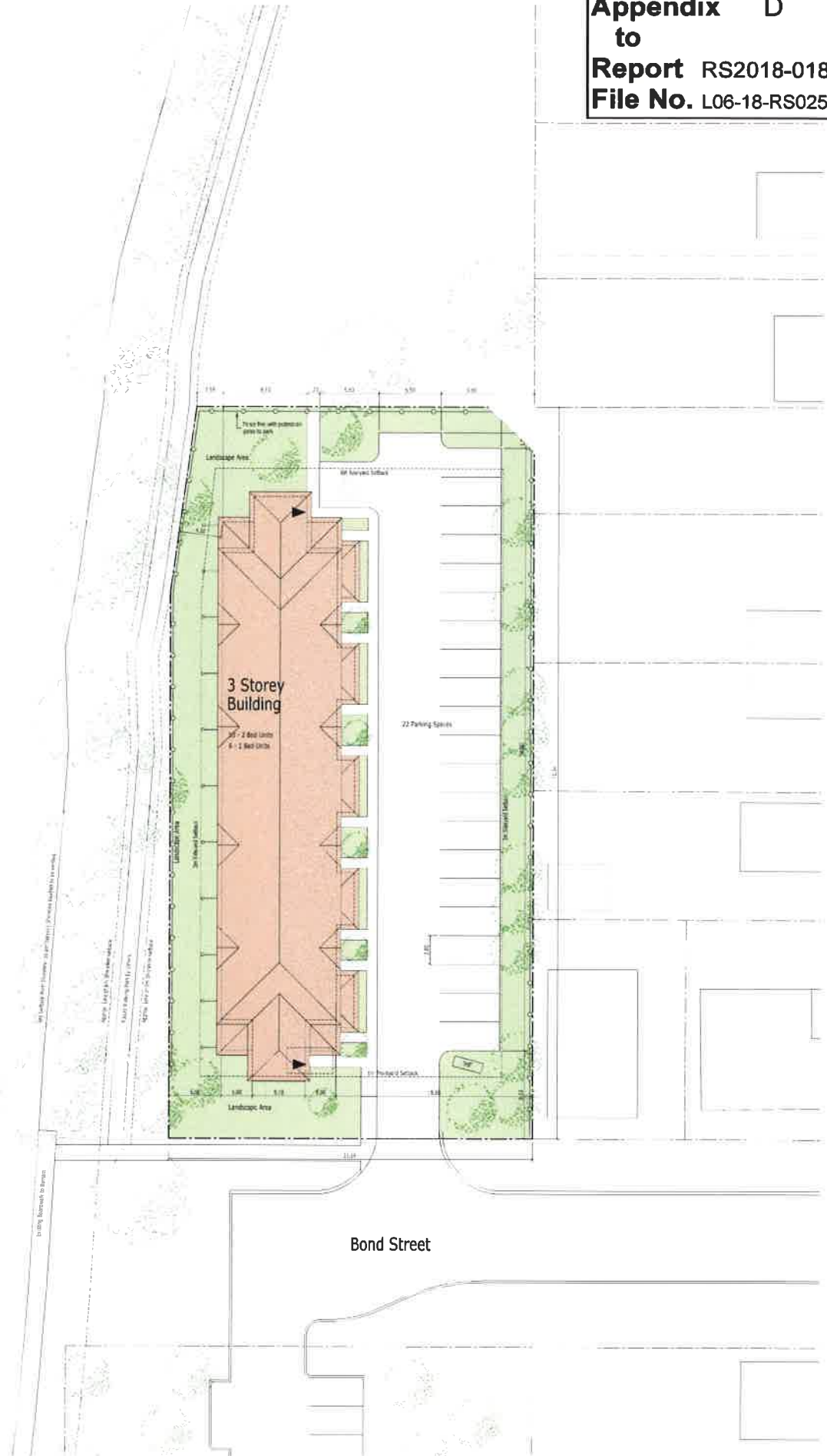


**Appendix D**  
**to**  
**Report RS2018-018**  
**File No. L06-18-RS025**

Site Data	
Lot Area	7,360.7 sqm
Lot Building Area (Coverage)	542.3 sqm (7.3%)
Height of Building	1 storey
Number of Storeys	3 Storeys
1 Bedroom Units	4 units
2 Bedroom Units	4 units
3 Bedroom Units	4 units
Total Number of Units	12 units
Area Left Landscaping (Coverage)	678 sqm (9.2%)
Area Left Landscaping (Coverage)	188 sqm (2.6%)
Access	
Access	Public Road Access
Area Road Access (Coverage)	788 sqm (10.7%)
Number of Accesses	1
Lot Area per Building Unit	77 sqm
Area Parking Unit	22 sqm x 5.5m
Available Parking Spaces	1 Space (100 sqm)
Available Parking Unit	2.2m x 5.5m x 2.2m x 5.5m
Setbacks	
Front Setback	4.0m
Side Setback	3.0m
Rear Setback	3.0m
Min. Setback	3.0m
Min. Setback	3.0m

Scugog River



Bond Street