



W I L L S

Highway 35 – Culvert Rehabilitation

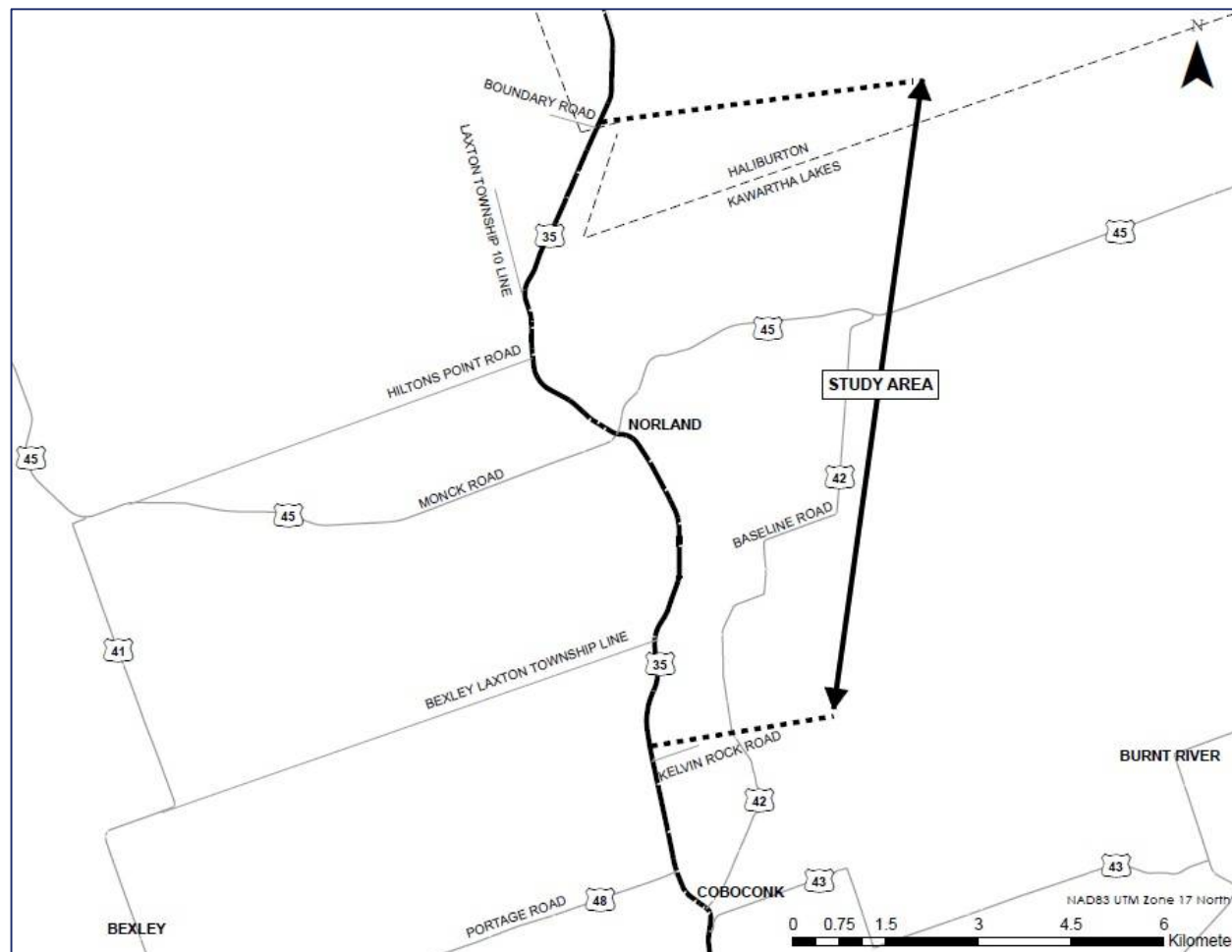
Project Overview:

- Hwy 35 – MTO Eastern Region Contract – Intended for 2019 Construction
- Fifty-three (53) Culverts were inspected in 2017
- Fifteen (15) Culverts are proposed to be replaced, along with other selected repairs.
- **Two (2) Culverts will benefit from 72-hour consecutive work to facilitate replacement**
- **One (1) Culvert will benefit from a Full Road Closure to facilitate replacement**

Highway 35 – Culvert Rehabilitation

Contract Location:

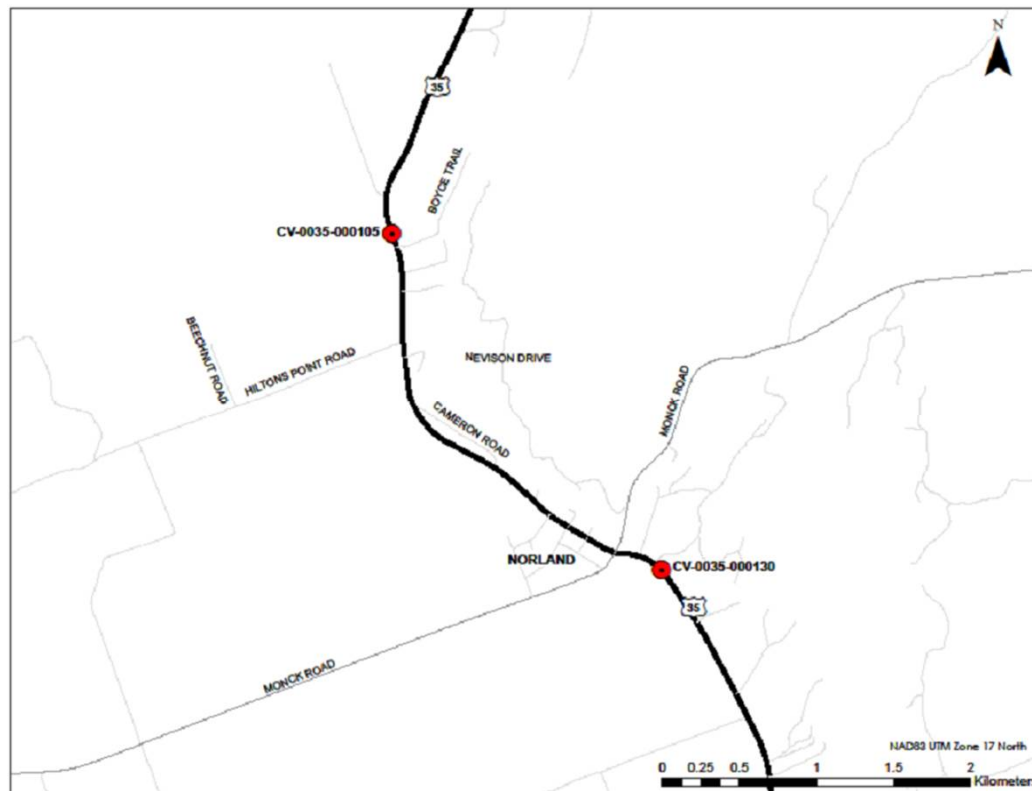
300m North of Kelvin Rock Road to MTO Eastern Region Boundary



Highway 35 – Culvert Rehabilitation

Noise By-Law Exemption:

- Two (2) Culverts will benefit from 72-hour consecutive flagging
- Nighttime work to be limited to flagging, with generators for illumination



Highway 35 – Culvert Rehabilitation

Noise By-Law Exemption:

CV-0035-00105



4.3m Cover

CV-0035-00130

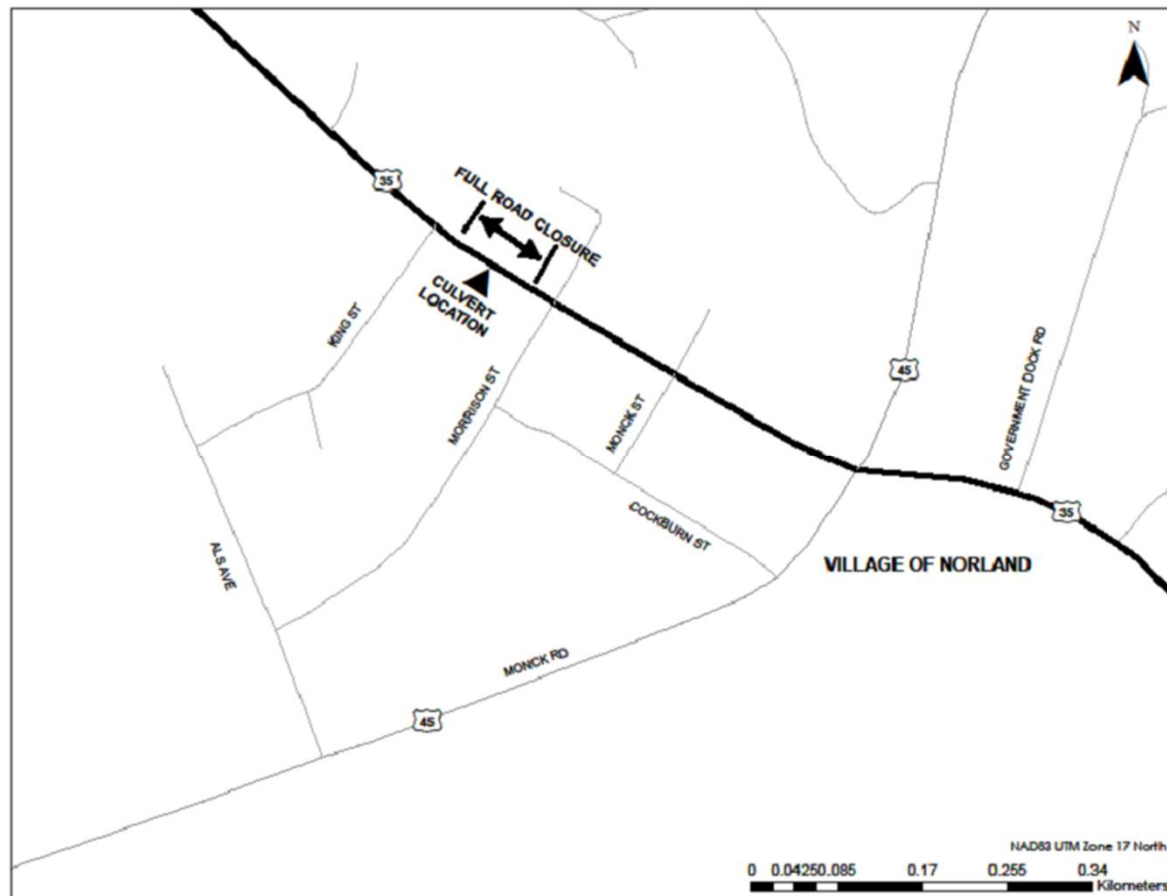


2.7m Cover

Highway 35 – Culvert Rehabilitation

Full Road Closure:

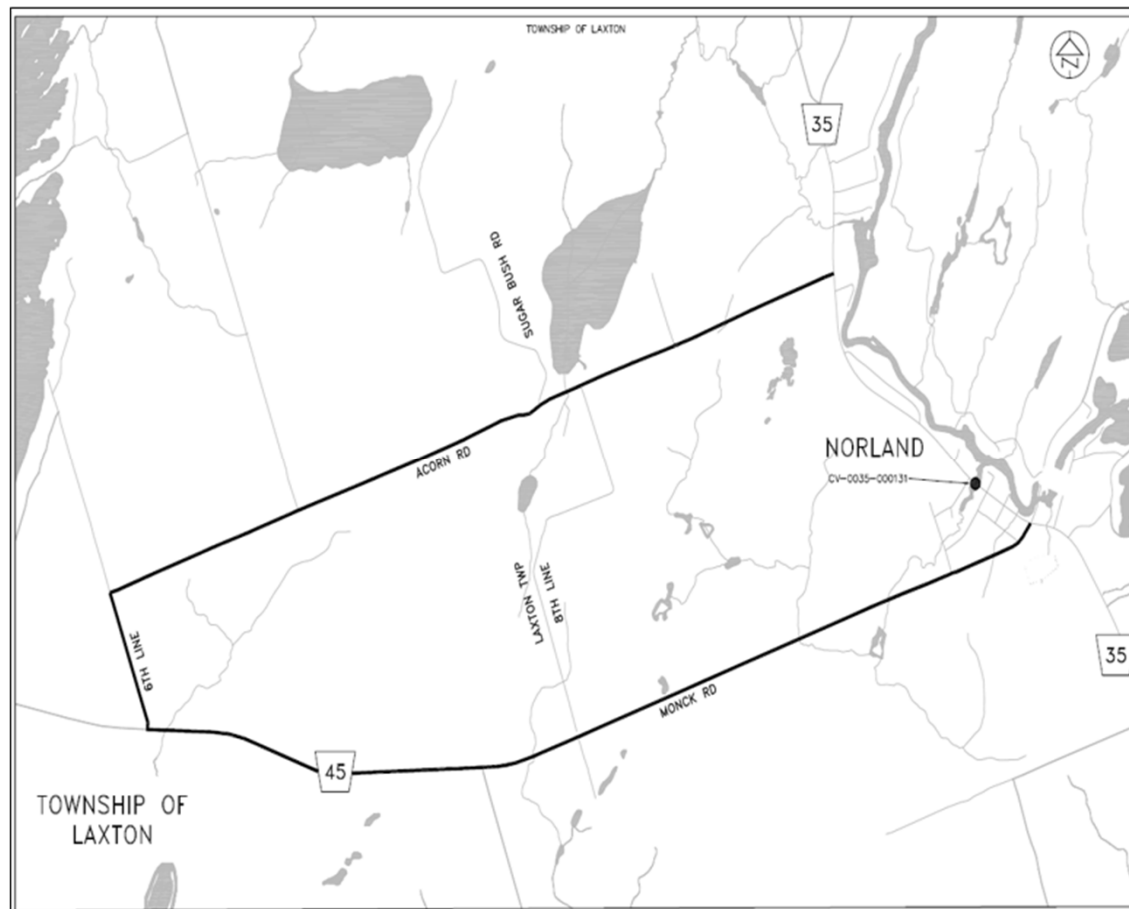
- One (1) Culvert will benefit from a Full Road Closure to facilitate replacement



Highway 35 – Culvert Rehabilitation

Full Road Closure:

- Anticipated Detour Route



Highway 35 – Culvert Rehabilitation

Full Road Closure:

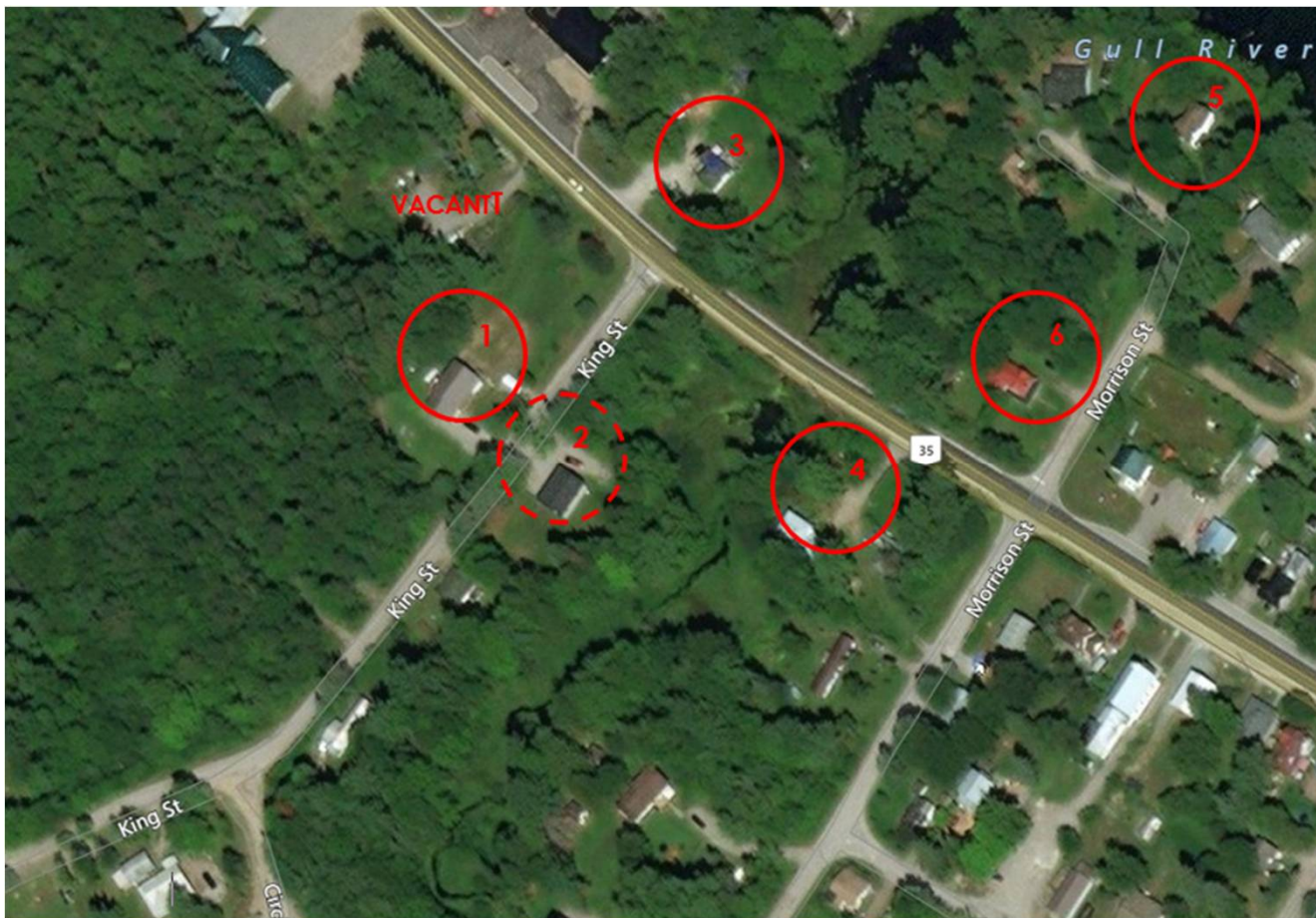
CV-0035-000131



Highway 35 – Culvert Rehabilitation

Full Road Closure:

- Resident Consultation



Highway 35 – Culvert Rehabilitation

Questions and Comments