

APPENDIX " C "

to
REPORT PLAN2019-020
FILE NO: D06-2019-004

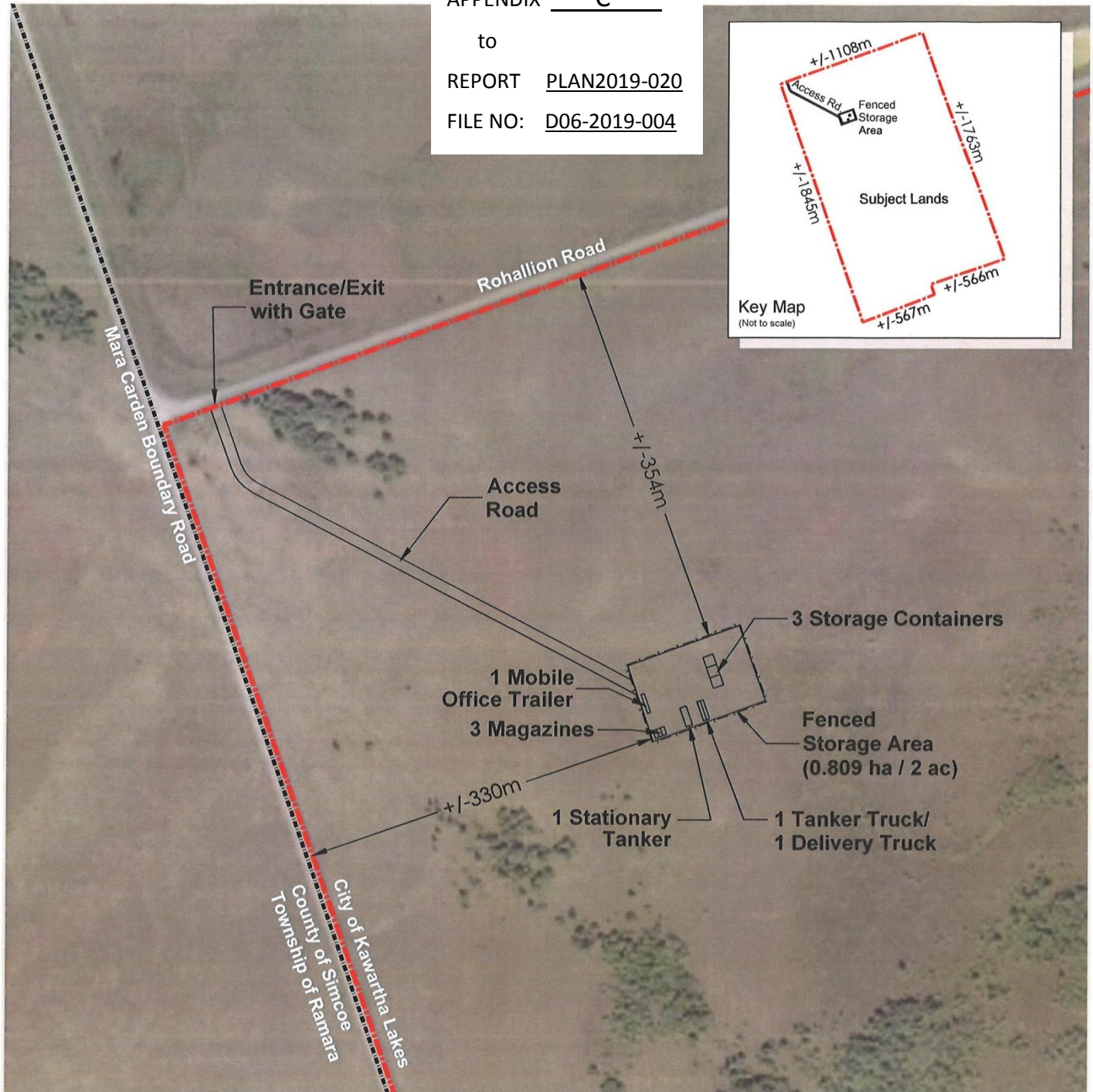
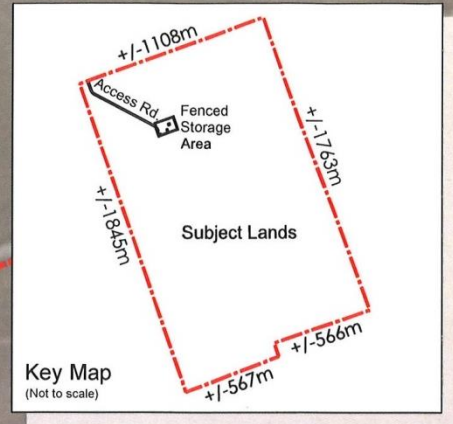


Figure 1:
**Preliminary
Concept Plan**
Proposed Explosives
Storage Depot

LEGEND



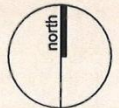
Subject Lands

DATE: June, 2018

FILE: 9633N

SCALE 1 : 5,000

DRAWN: GC



K:\9633N-JAMES DICK CONSTRUCTION\KAWARTHA LAKES-ROHALLION
ROAD\PT\CONCEPT PLAN.DWG

James Dick Construction Limited
Part of Lots 30, 31 and 32, Concession 1
(former Geographic Township of Eldon)
City of Kawartha Lakes

Base Map Sources:
Imagery - Google Earth (August 22, 2016)

MHBC PLANNING
URBAN DESIGN
& LANDSCAPE
ARCHITECTURE
200-540 BINGEMANS CENTRE DR. KITCHENER, ON, N2B 3X9
P: 519.576.3650 F: 519.576.0121 | WWW.MHBCPLAN.COM