

2019 MAINTENANCE SCHEDULE



OAKWOOD DRAIN

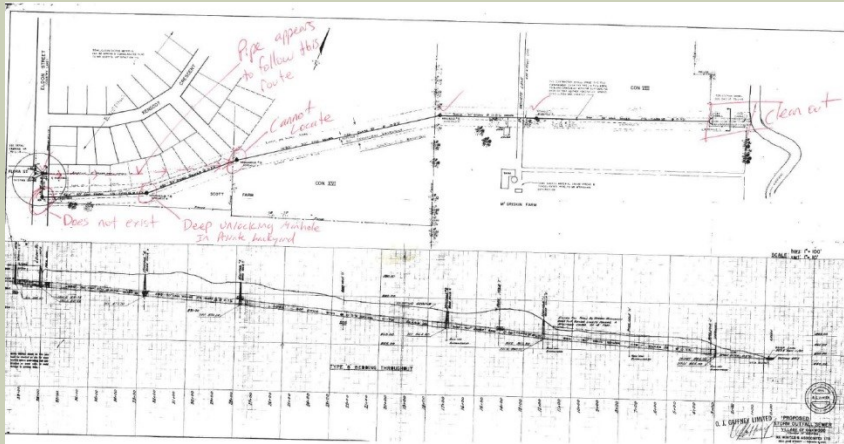
- Bottom clean out
100m to outlet



OAKWOOD MANHOLE



SECTION 78 OAKWOOD DRAIN



- Two missing manholes
- Pipe route does NOT follow design
- Working area in Engineer's report and plan does not match – access and maintenance issues
- Manhole is actually in private backyard

MCARTHUR DRAIN



MCARTHUR CULVERT REPLACEMENT



DYKSTRA DRAIN

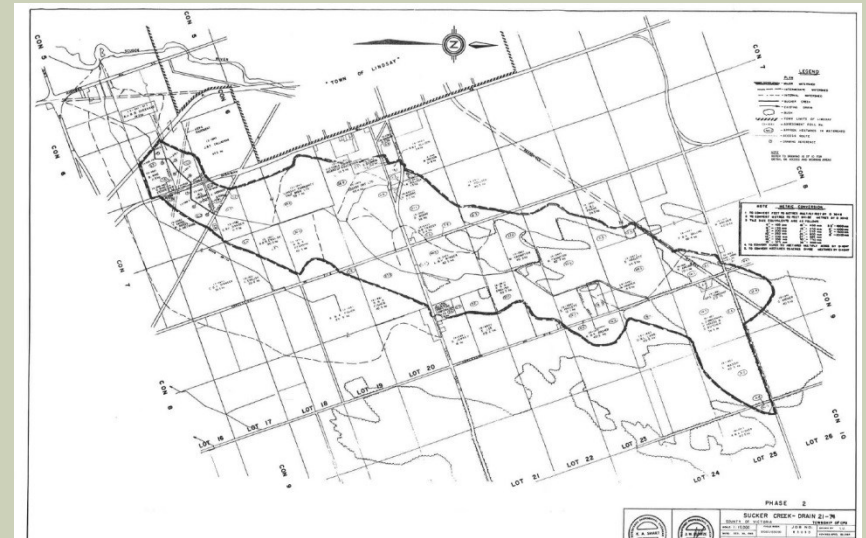


- 100m bottom cleanout to outlet
- Owner would also like a new culvert.

OPS 21-74 DRAIN – BOTTOM CLEANOUT



A photograph of a steep, snow-covered embankment. The slope is covered in a thick layer of snow, with patches of dry, brown grass and reeds visible. A small, dark, irregular opening or hole is visible in the snow near the top of the slope. The background shows a line of trees and a cloudy sky.



OPS 4 GENERAL CLEAN UP REMOVAL OF DEBRIS, DAMS AND FALLEN TREES



OPS 4 GENERAL CLEAN UP REMOVAL OF DEBRIS, DAMS AND FALLEN TREES



VAN SHAIK DRAIN CULVERT REPLACEMENT AND DITCHING



VAN SHAIK DRAIN



OPS 3-78 DRAIN MINOR DEBRIS AND DAM REMOVALS



OPS 3-78 DRAIN MINOR DEBRIS AND DAM REMOVALS



MISC RIP-RAP REPLACEMENT

- Ops 5 – erosion around catch basins
- Hall – erosion around rock dam
- McArthur – erosion around damaged culvert
- Nancekievill – erosion around culvert
- Davidson – erosion at outlet to open channel
- Denby – erosion around catch basins

More to come!

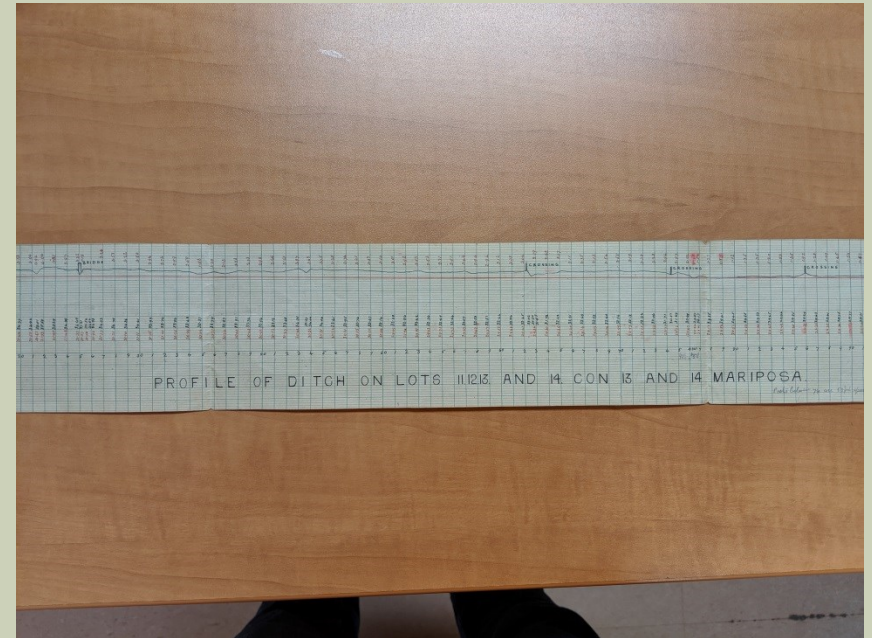
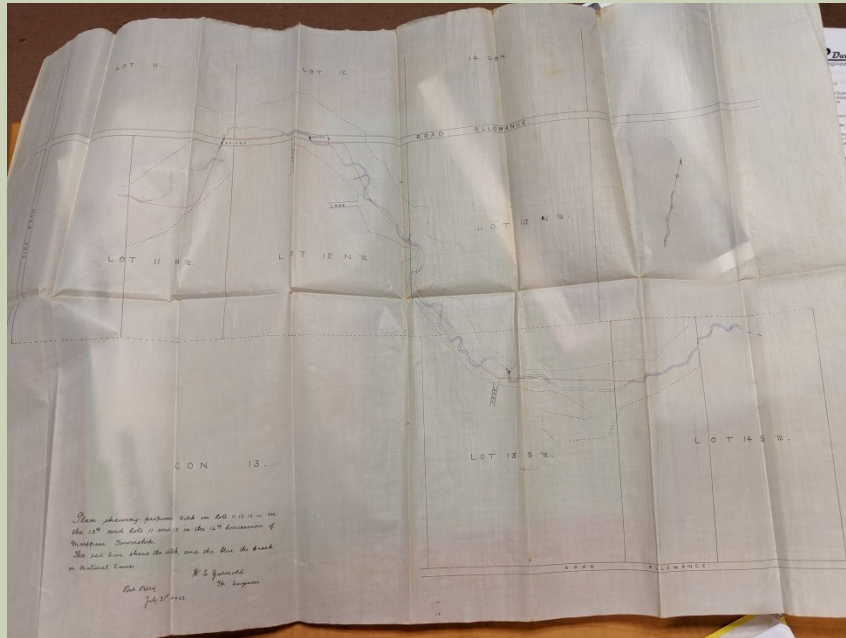


HILL DRAIN

- Adopted by by-law in 1903
- Has municipal drain status
- Section 78 or abandon
- Hill serves as outlet to Grant Drain.

Recommendation to section 78 Hill drain.

HILL PLAN AND PROFILE



HILL DRAIN



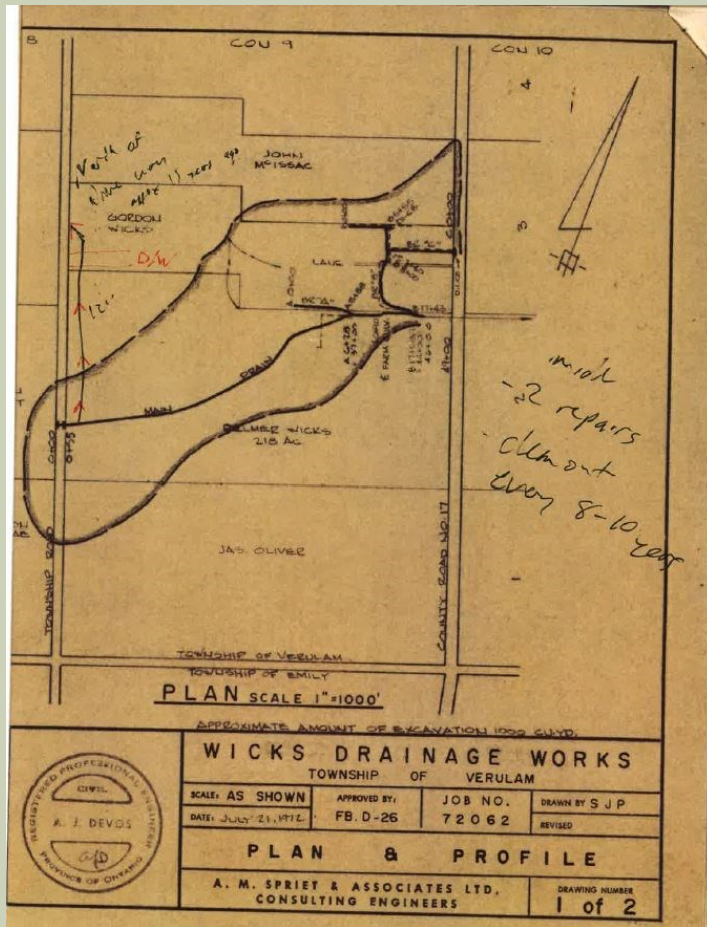
HILL DRAIN



HILL DRAIN



WICKS DRAIN



- No records of maintenance being completed by township
- Owner has changed plan without permission
- Wick family own majority of land assessed
- Section 78 or abandon
- Recommendation to drainage board to begin discussions with owner regarding abandonment of drain
- Wicks used an existing watercourse prior to petition
- Wicks drain outlets into watercourse within Wicks property – riparian rights return after abandonment.

WICKS DRAIN

