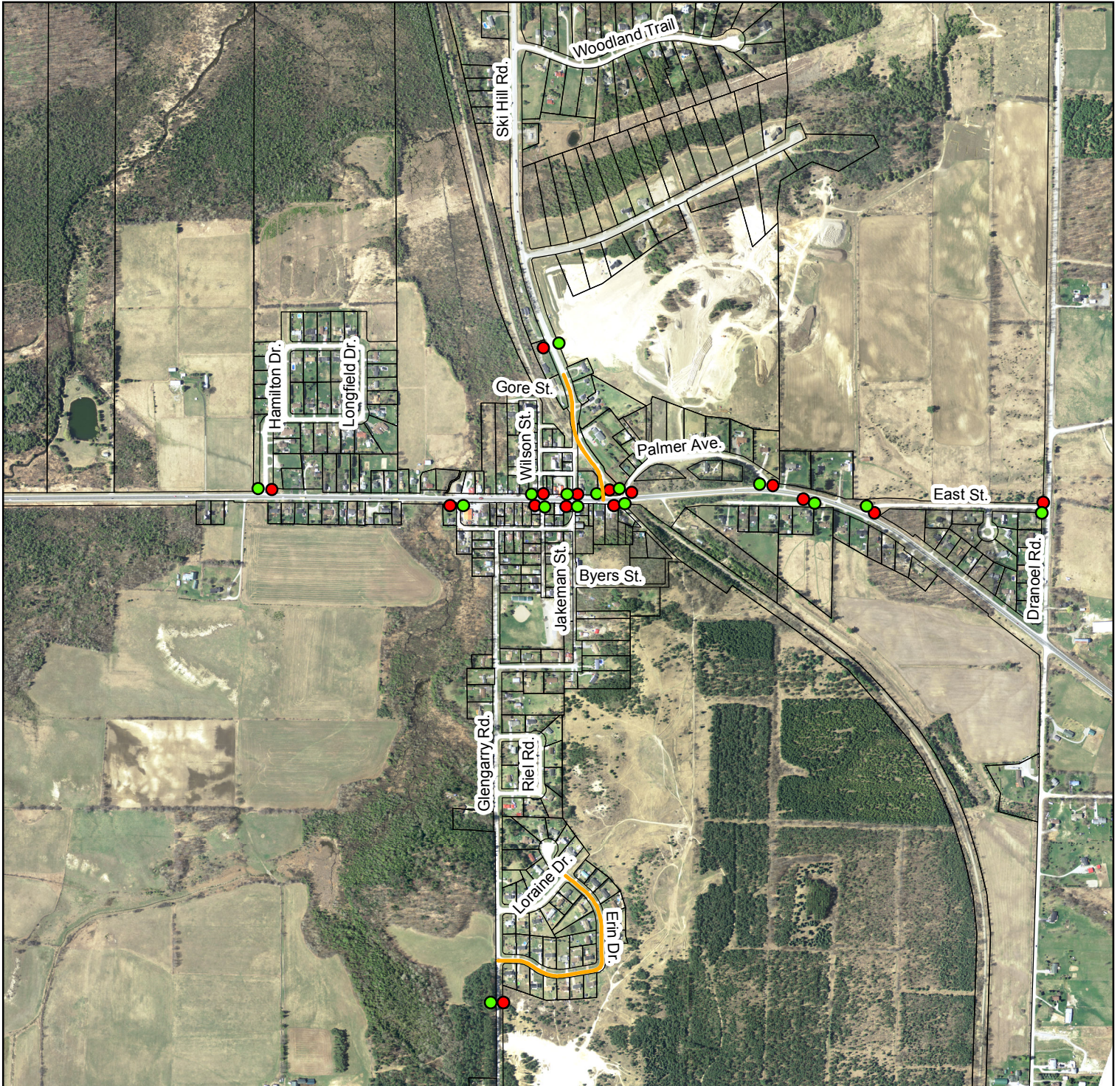


Appendix C Sign Requirements Bethany



Speed Area Zone

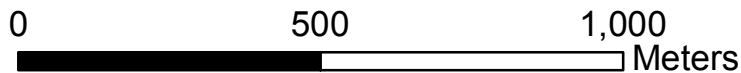
- 40 Area Begins
- 40 Area Ends
- Road Class Change 3 to 4
- Road Class Change 4 to 5



Map produced by the City of Kawartha Lakes Engineering Department with data obtained under license. Reproduction without permission is prohibited.

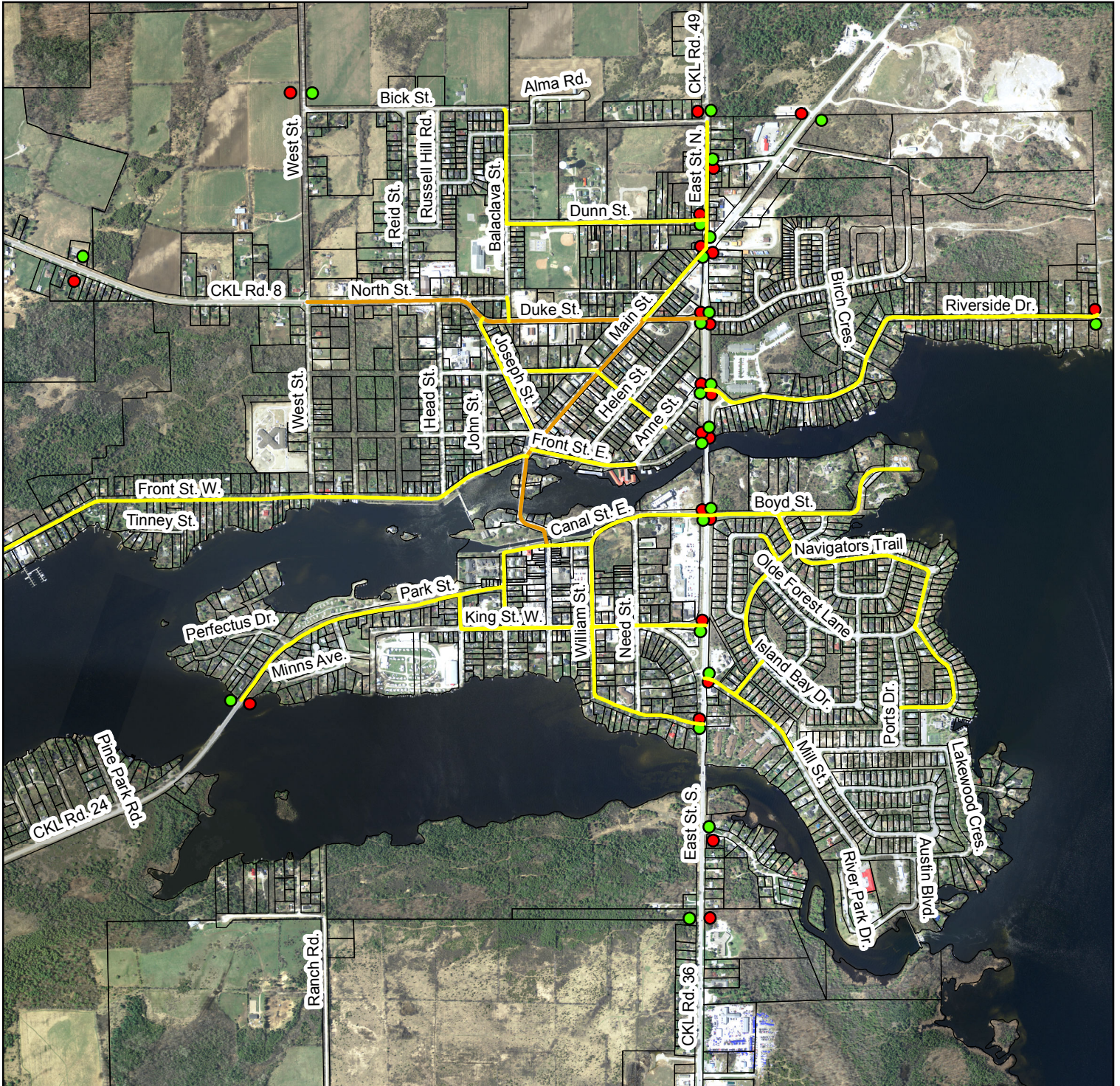
The foregoing information is given for convenience only and it should be clearly understood that you must satisfy yourself as to whether the premises and the existing or proposed use thereof are, or would be, in conformity with all applicable by-laws and regulations of the municipality.

All distances and locations are approximate and are not of survey quality. This map is illustrative only. Do not rely on it as being a precise indicator of privately or publicly owned land, routes, locations or features, nor as a guide to navigate.



Projection: Transverse Mercator
Coordinate System: NAD83, Zone 17

Appendix C Sign Requirements Bobcaygeon



Speed Area Zone

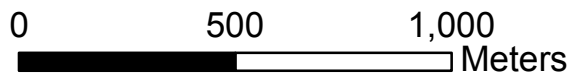
- 40 Area Begins
- 40 Area Ends
- Road Class Change 3 to 4
- Road Class Change 4 to 5



Map produced by the City of Kawartha Lakes Engineering Department with data obtained under license. Reproduction without permission is prohibited.

The foregoing information is given for convenience only and it should be clearly understood that you must satisfy yourself as to whether the premises and the existing or proposed use thereof are, or would be, in conformity with all applicable by-laws and regulations of the municipality.

All distances and locations are approximate and are not of survey quality. This map is illustrative only. Do not rely on it as being a precise indicator of privately or publicly owned land, routes, locations or features, nor as a guide to navigate.



Projection: Transverse Mercator
Coordinate System: NAD83, Zone 17

Appendix C Sign Requirements Burnt River



Speed Area Zone

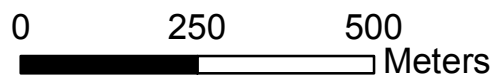
- 40 Area Begins
- 40 Area Ends
- Road Class Change 3 to 4
- Road Class Change 4 to 5



Map produced by the City of Kawartha Lakes Engineering Department with data obtained under license. Reproduction without permission is prohibited.

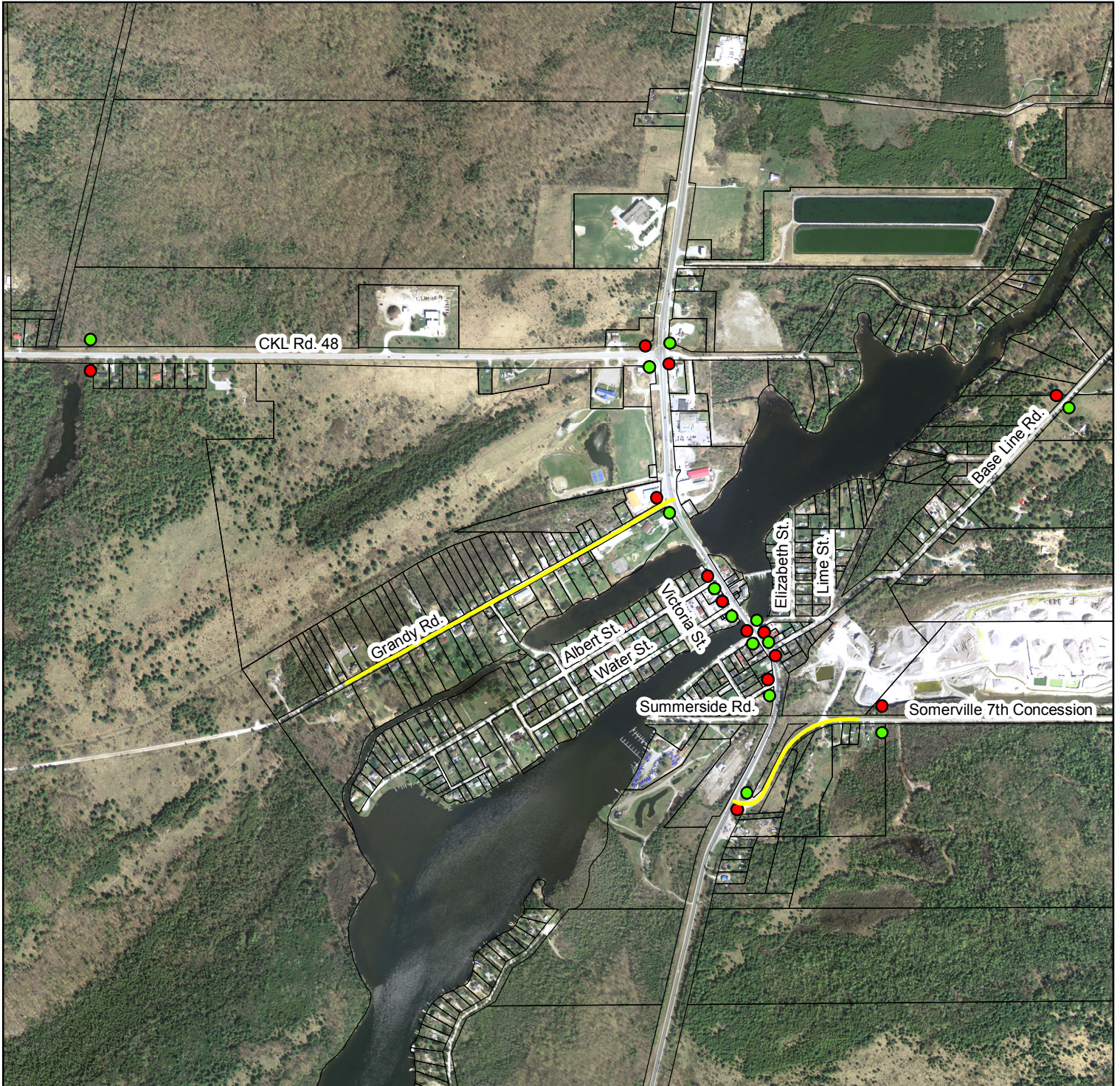
The foregoing information is given for convenience only and it should be clearly understood that you must satisfy yourself as to whether the premises and the existing or proposed use thereof are, or would be, in conformity with all applicable by-laws and regulations of the municipality.

All distances and locations are approximate and are not of survey quality. This map is illustrative only. Do not rely on it as being a precise indicator of privately or publicly owned land, routes, locations or features, nor as a guide to navigate.



Projection: Transverse Mercator
Coordinate System: NAD83, Zone 17

Appendix C Sign Requirements Coboconk



Speed Area Zone

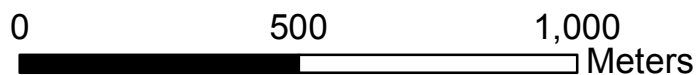
- 40 Area Begins
- 40 Area Ends
- Road Class Change 3 to 4
- Road Class Change 4 to 5



Map produced by the City of Kawartha Lakes Engineering Department with data obtained under license. Reproduction without permission is prohibited.

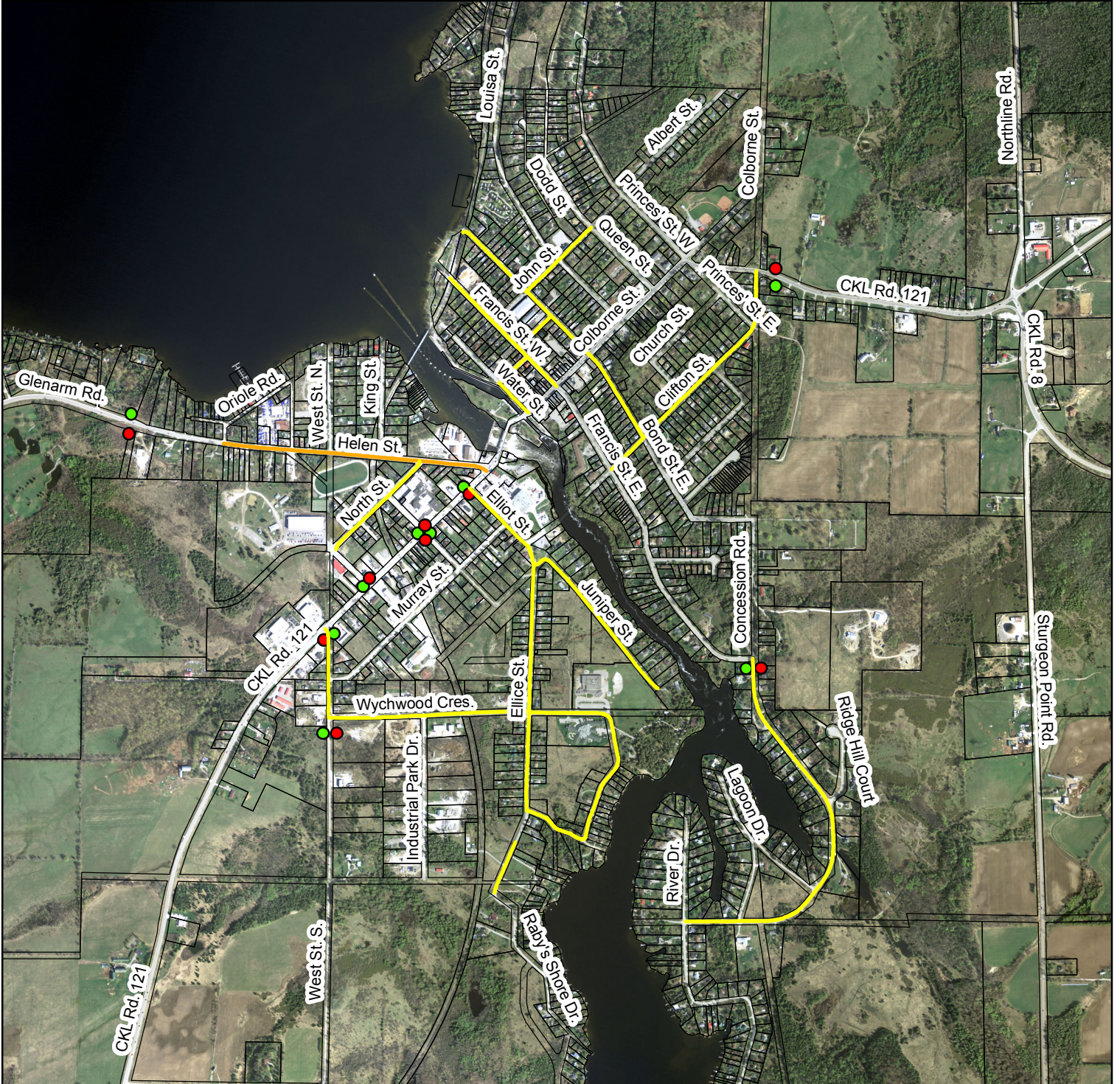
The foregoing information is given for convenience only and it should be clearly understood that you must satisfy yourself as to whether the premises and the existing or proposed use thereof are, or would be, in conformity with all applicable by-laws and regulations of the municipality.

All distances and locations are approximate and are not of survey quality. This map is illustrative only. Do not rely on it as being a precise indicator of privately or publicly owned land, routes, locations or features, nor as a guide to navigate.



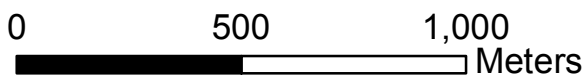
Projection: Transverse Mercator
Coordinate System: NAD83, Zone 17

Appendix C Sign Requirements Fenelon Falls



Speed Area Zone

- 40 Area Begins
- 40 Area Ends
- Road Class Change 3 to 4
- Road Class Change 4 to 5



Map produced by the City of Kawartha Lakes Engineering Department with data obtained under license. Reproduction without permission is prohibited.

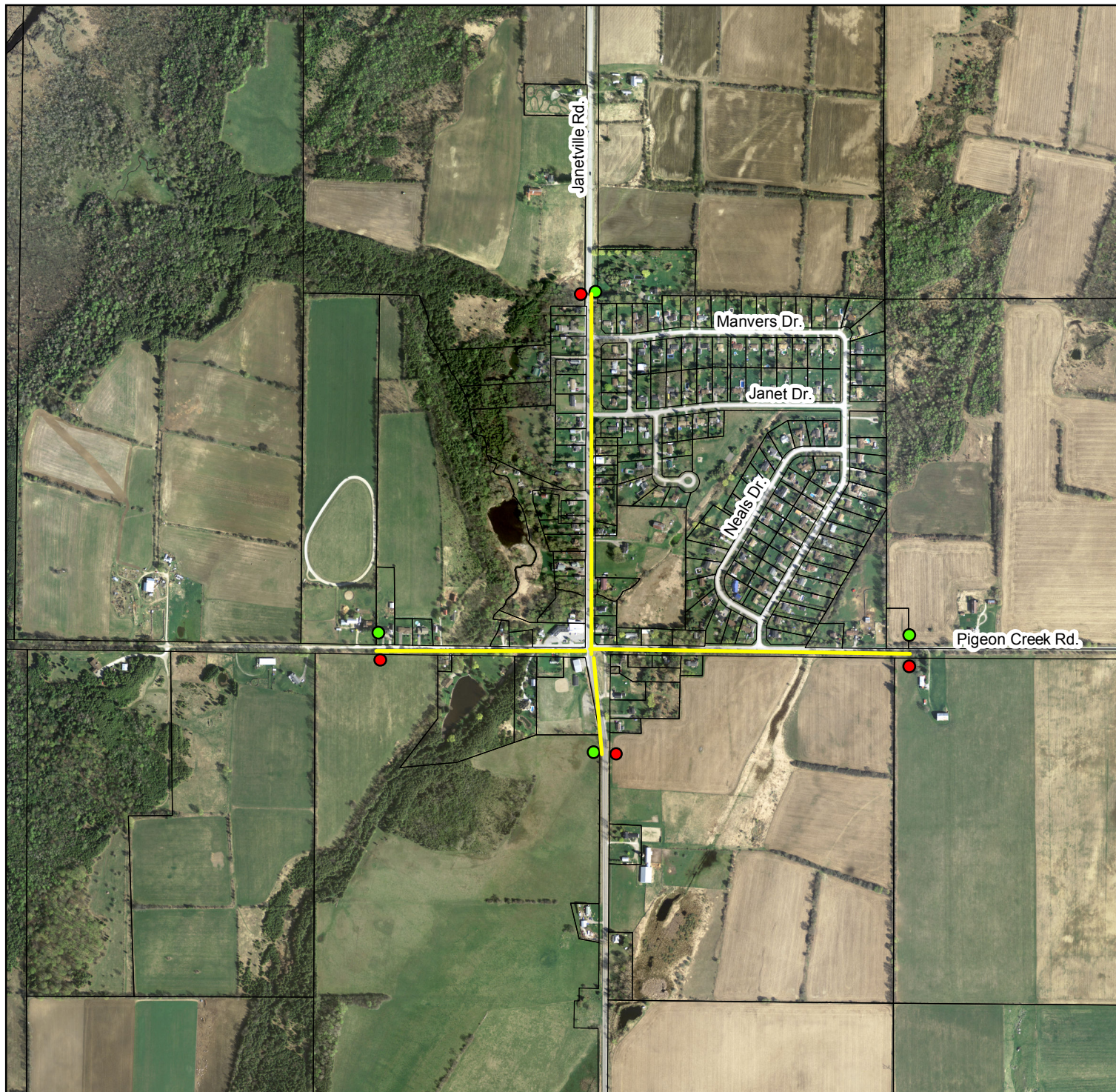
The foregoing information is given for convenience only and it should be clearly understood that you must satisfy yourself as to whether the premises and the existing or proposed use thereof are, or would be, in conformity with all applicable by-laws and regulations of the municipality.

All distances and locations are approximate and are not of survey quality. This map is illustrative only. Do not rely on it as being a precise indicator of privately or publicly owned land, routes, locations or features, nor as a guide to navigate.



Projection: Transverse Mercator
Coordinate System: NAD83, Zone 17

Appendix C Sign Requirements Janetville



Speed Area Zone

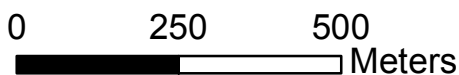
- 40 Area Begins
- 40 Area Ends
- Road Class Change 3 to 4
- Road Class Change 4 to 5



Map produced by the City of Kawartha Lakes Engineering Department with data obtained under license. Reproduction without permission is prohibited.

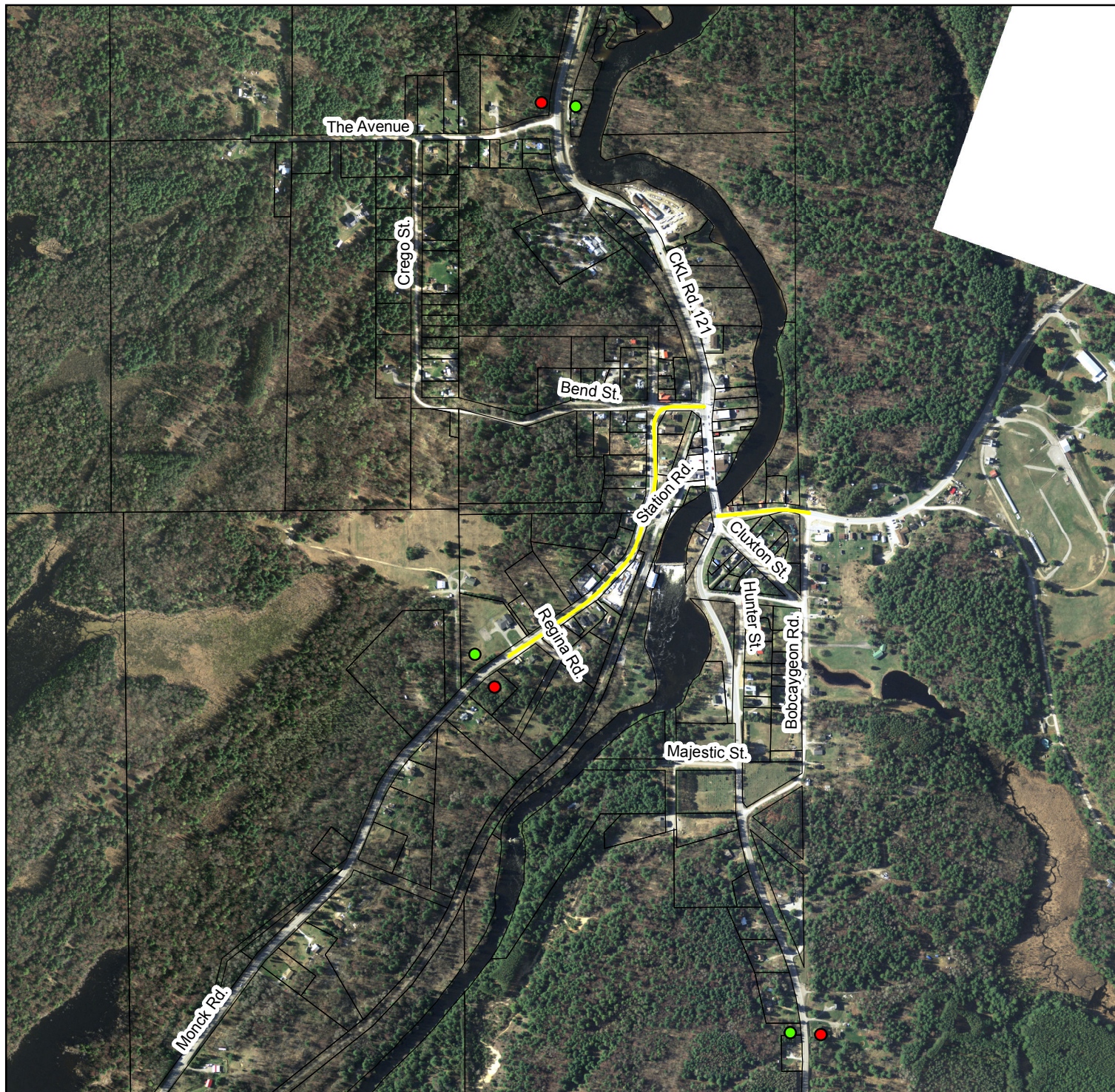
The foregoing information is given for convenience only and it should be clearly understood that you must satisfy yourself as to whether the premises and the existing or proposed use thereof are, or would be, in conformity with all applicable by-laws and regulations of the municipality.

All distances and locations are approximate and are not of survey quality. This map is illustrative only. Do not rely on it as being a precise indicator of privately or publicly owned land, routes, locations or features, nor as a guide to navigate.



Projection: Transverse Mercator
Coordinate System: NAD83, Zone 17

Appendix C Sign Requirements Kinmount



Speed Area Zone

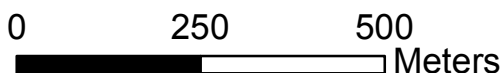
- 40 Area Begins
- 40 Area Ends
- Road Class Change 3 to 4
- Road Class Change 4 to 5



Map produced by the City of Kawartha Lakes Engineering Department with data obtained under license. Reproduction without permission is prohibited.

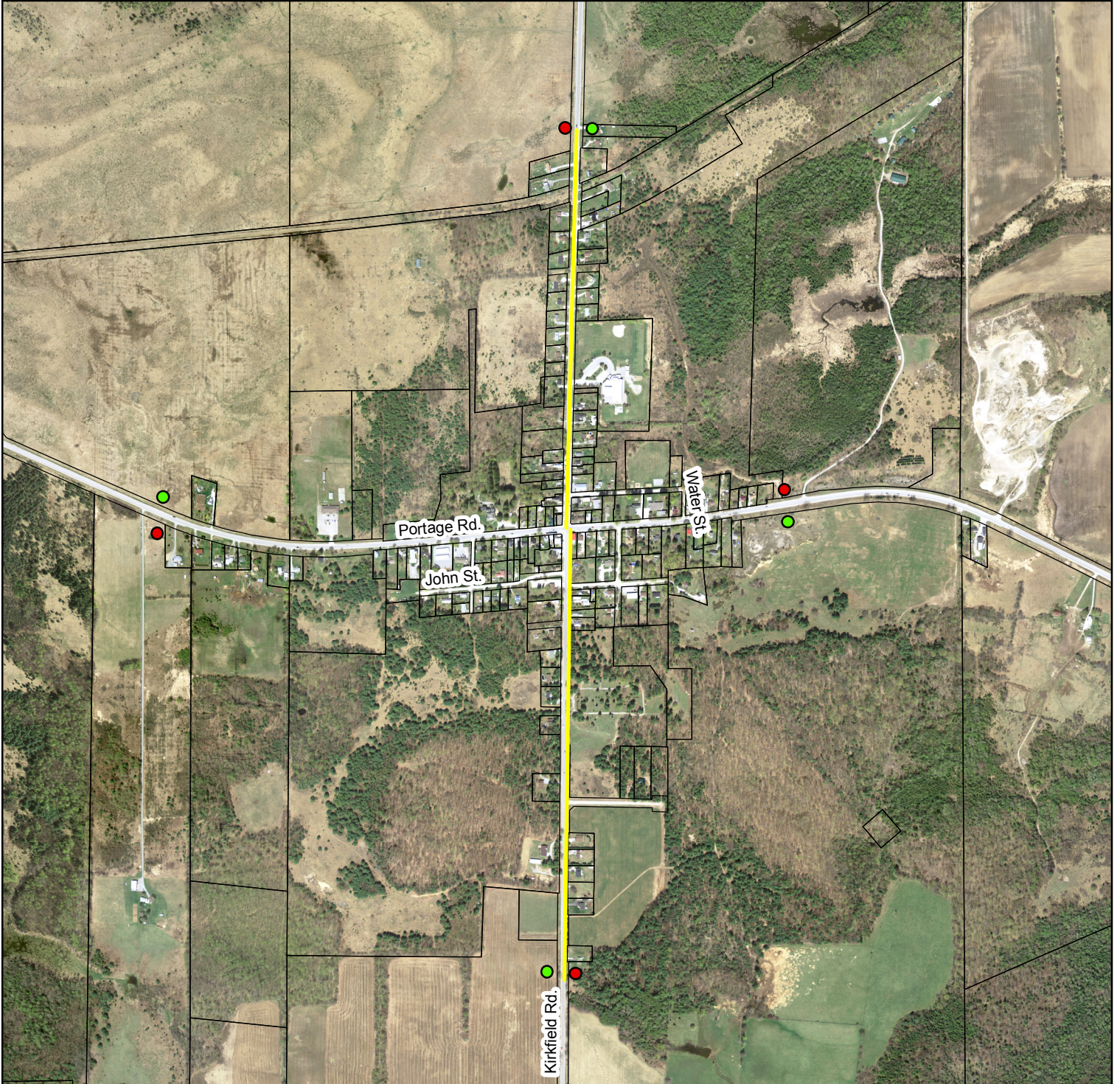
The foregoing information is given for convenience only and it should be clearly understood that you must satisfy yourself as to whether the premises and the existing or proposed use thereof are, or would be, in conformity with all applicable by-laws and regulations of the municipality.

All distances and locations are approximate and are not of survey quality. This map is illustrative only. Do not rely on it as being a precise indicator of privately or publicly owned land, routes, locations or features, nor as a guide to navigate.



Projection: Transverse Mercator
Coordinate System: NAD83, Zone 17

Appendix C Sign Requirements Kirkfield



Speed Area Zone

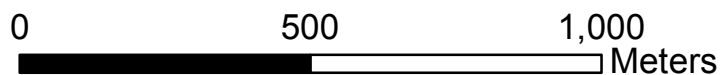
- 40 Area Begins
- 40 Area Ends
- Road Class Change 3 to 4
- Road Class Change 4 to 5



Map produced by the City of Kawartha Lakes Engineering Department with data obtained under license. Reproduction without permission is prohibited.

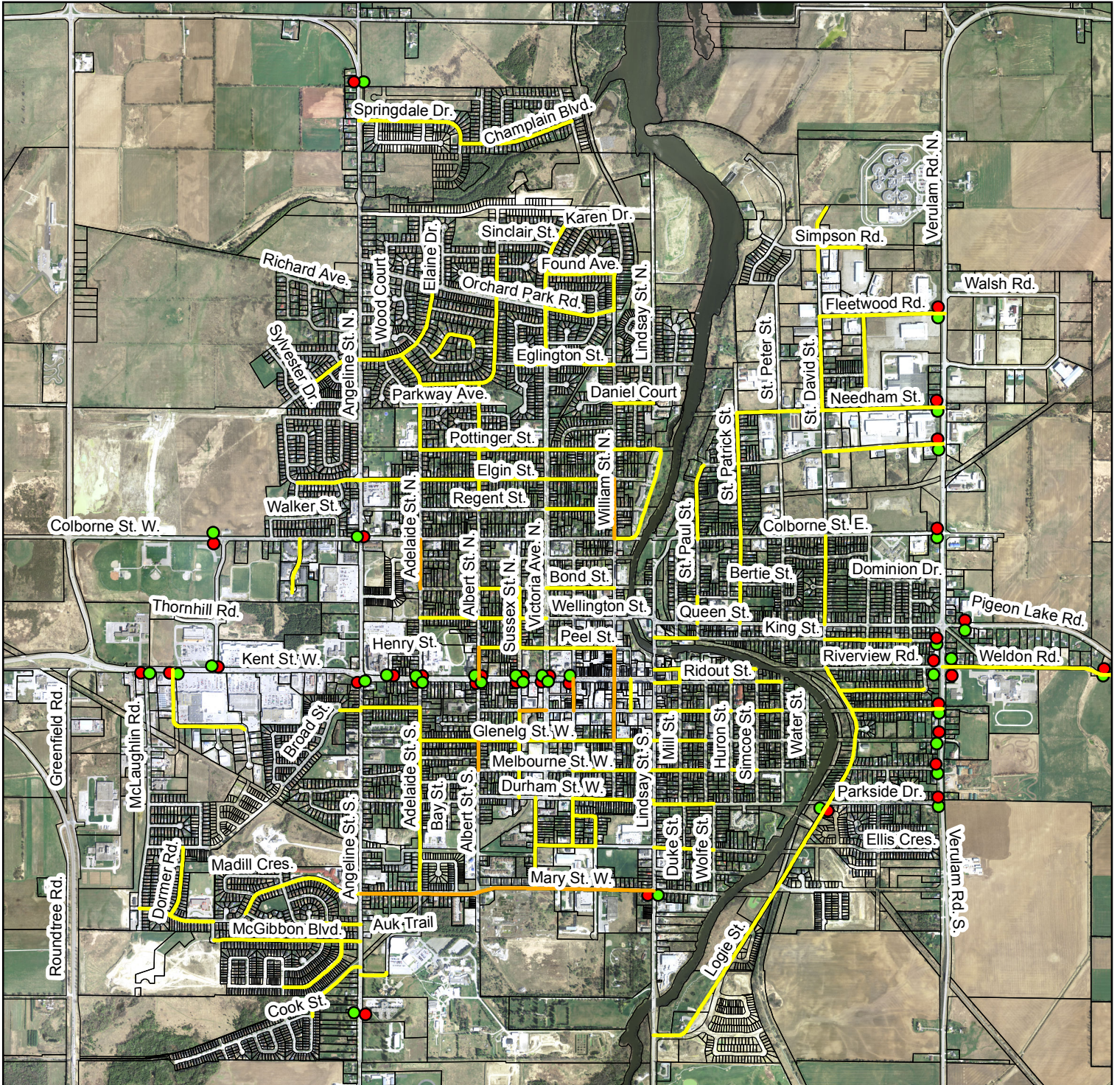
The foregoing information is given for convenience only and it should be clearly understood that you must satisfy yourself as to whether the premises and the existing or proposed use thereof are, or would be, in conformity with all applicable by-laws and regulations of the municipality.

All distances and locations are approximate and are not of survey quality. This map is illustrative only. Do not rely on it as being a precise indicator of privately or publicly owned land, routes, locations or features, nor as a guide to navigate.



Projection: Transverse Mercator
Coordinate System: NAD83, Zone 17

Appendix C Sign Requirements Lindsay



Speed Area Zone

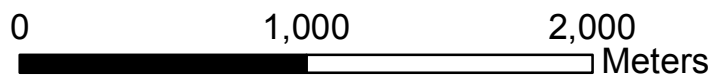
- 40 Area Begins
- 40 Area Ends
- Road Class Change 3 to 4
- Road Class Change 4 to 5

MAXIMUM 40 km/h AREA BEGINS	MAXIMUM 40 km/h AREA ENDS
--	--

Map produced by the City of Kawartha Lakes Engineering Department with data obtained under license. Reproduction without permission is prohibited.

The foregoing information is given for convenience only and it should be clearly understood that you must satisfy yourself as to whether the premises and the existing or proposed use thereof are, or would be, in conformity with all applicable by-laws and regulations of the municipality.

All distances and locations are approximate and are not of survey quality. This map is illustrative only. Do not rely on it as being a precise indicator of privately or publicly owned land, routes, locations or features, nor as a guide to navigate.



Projection: Transverse Mercator
Coordinate System: NAD83, Zone 17

Appendix C Sign Requirements Little Britain



Speed Area Zone

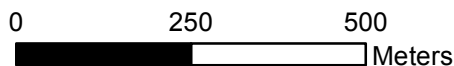
- 40 Area Begins
- 40 Area Ends
- Road Class Change 3 to 4
- Road Class Change 4 to 5



Map produced by the City of Kawartha Lakes Engineering Department with data obtained under license. Reproduction without permission is prohibited.

The foregoing information is given for convenience only and it should be clearly understood that you must satisfy yourself as to whether the premises and the existing or proposed use thereof are, or would be, in conformity with all applicable by-laws and regulations of the municipality.

All distances and locations are approximate and are not of survey quality. This map is illustrative only. Do not rely on it as being a precise indicator of privately or publicly owned land, routes, locations or features, nor as a guide to navigate.



Projection: Transverse Mercator
Coordinate System: NAD83, Zone 17

Appendix C Sign Requirements Norland



Speed Area Zone

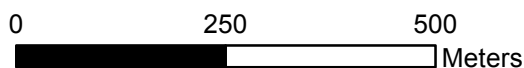
- 40 Area Begins
- 40 Area Ends
- Road Class Change 3 to 4
- Road Class Change 4 to 5



Map produced by the City of Kawartha Lakes Engineering Department with data obtained under license. Reproduction without permission is prohibited.

The foregoing information is given for convenience only and it should be clearly understood that you must satisfy yourself as to whether the premises and the existing or proposed use thereof are, or would be, in conformity with all applicable by-laws and regulations of the municipality.

All distances and locations are approximate and are not of survey quality. This map is illustrative only. Do not rely on it as being a precise indicator of privately or publicly owned land, routes, locations or features, nor as a guide to navigate.



Projection: Transverse Mercator
Coordinate System: NAD83, Zone 17

Appendix C Sign Requirements Oakwood



Speed Area Zone

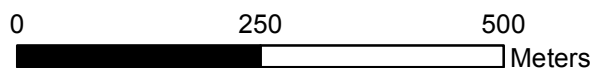
- 40 Area Begins
- 40 Area Ends
- Road Class Change 3 to 4
- Road Class Change 4 to 5



Map produced by the City of Kawartha Lakes Engineering Department with data obtained under license. Reproduction without permission is prohibited.

The foregoing information is given for convenience only and it should be clearly understood that you must satisfy yourself as to whether the premises and the existing or proposed use thereof are, or would be, in conformity with all applicable by-laws and regulations of the municipality.

All distances and locations are approximate and are not of survey quality. This map is illustrative only. Do not rely on it as being a precise indicator of privately or publicly owned land, routes, locations or features, nor as a guide to navigate.



Projection: Transverse Mercator
Coordinate System: NAD83, Zone 17

Appendix C Sign Requirements Omeme



Speed Area Zone

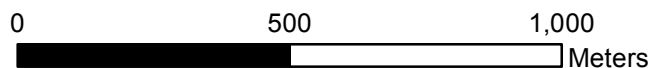
- 40 Area Begins
- 40 Area Ends
- Road Class Change 3 to 4
- Road Class Change 4 to 5



Map produced by the City of Kawartha Lakes Engineering Department with data obtained under license. Reproduction without permission is prohibited.

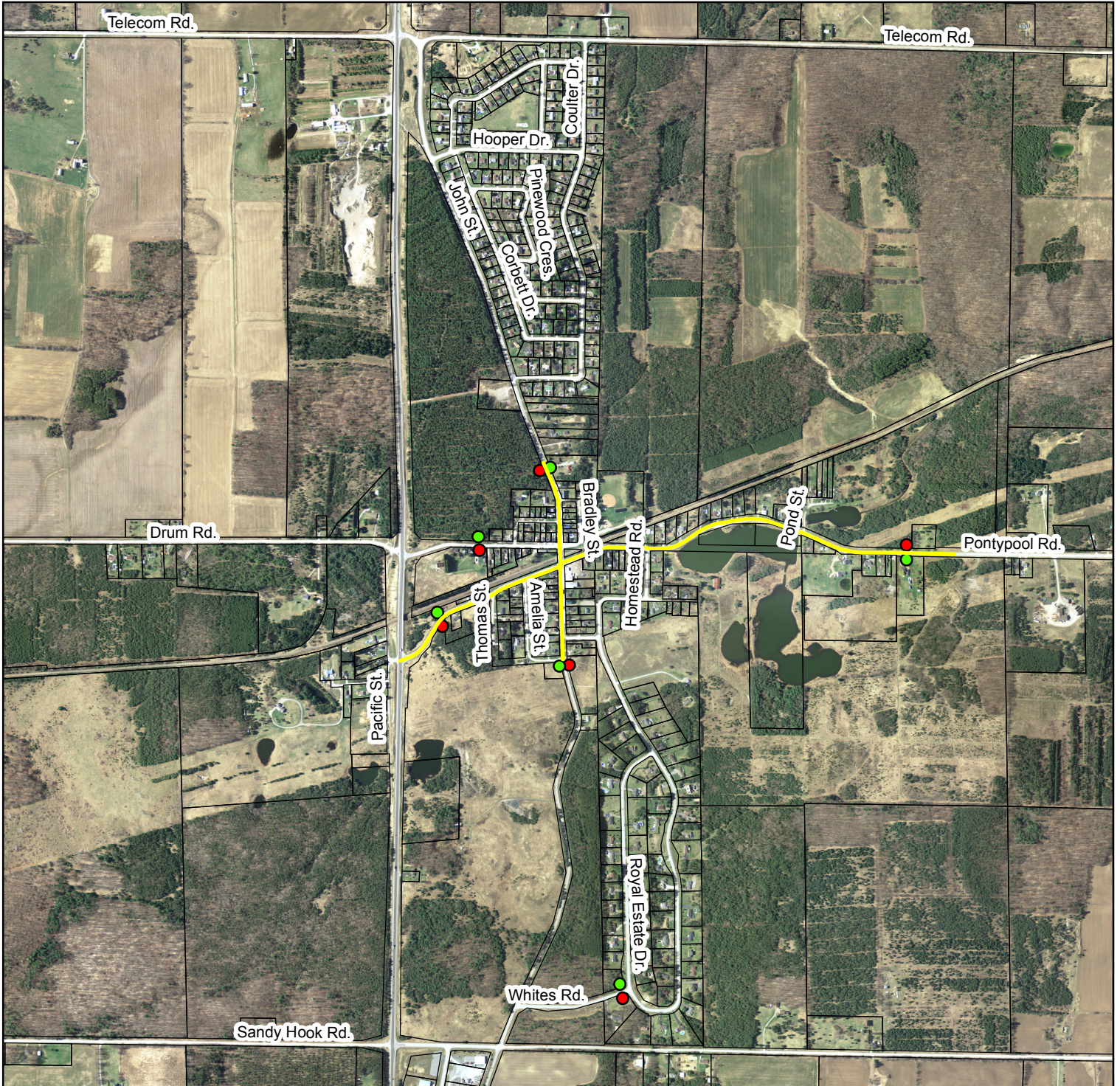
The foregoing information is given for convenience only and it should be clearly understood that you must satisfy yourself as to whether the premises and the existing or proposed use thereof are, or would be, in conformity with all applicable by-laws and regulations of the municipality.

All distances and locations are approximate and are not of survey quality. This map is illustrative only. Do not rely on it as being a precise indicator of privately or publicly owned land, routes, locations or features, nor as a guide to navigate.



Projection: Transverse Mercator
Coordinate System: NAD83, Zone 17

Appendix C Sign Requirements Pontypool



Speed Area Zone

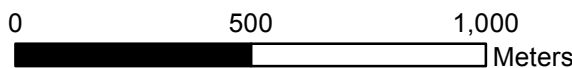
- 40 Area Begins
- 40 Area Ends
- Road Class Change 3 to 4
- Road Class Change 4 to 5



Map produced by the City of Kawartha Lakes Engineering Department with data obtained under license. Reproduction without permission is prohibited.

The foregoing information is given for convenience only and it should be clearly understood that you must satisfy yourself as to whether the premises and the existing or proposed use thereof are, or would be, in conformity with all applicable by-laws and regulations of the municipality.

All distances and locations are approximate and are not of survey quality. This map is illustrative only. Do not rely on it as being a precise indicator of privately or publicly owned land, routes, locations or features, nor as a guide to navigate.



Projection: Transverse Mercator
Coordinate System: NAD83, Zone 17

Appendix C Sign Requirements Seagrave



Speed Area Zone

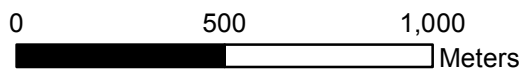
- 40 Area Begins
- 40 Area Ends
- Road Class Change 3 to 4
- Road Class Change 4 to 5

MAXIMUM	MAXIMUM
40	40
km/h	km/h
AREA	AREA
BEGINS	ENDS

Map produced by the City of Kawartha Lakes Engineering Department with data obtained under license. Reproduction without permission is prohibited.

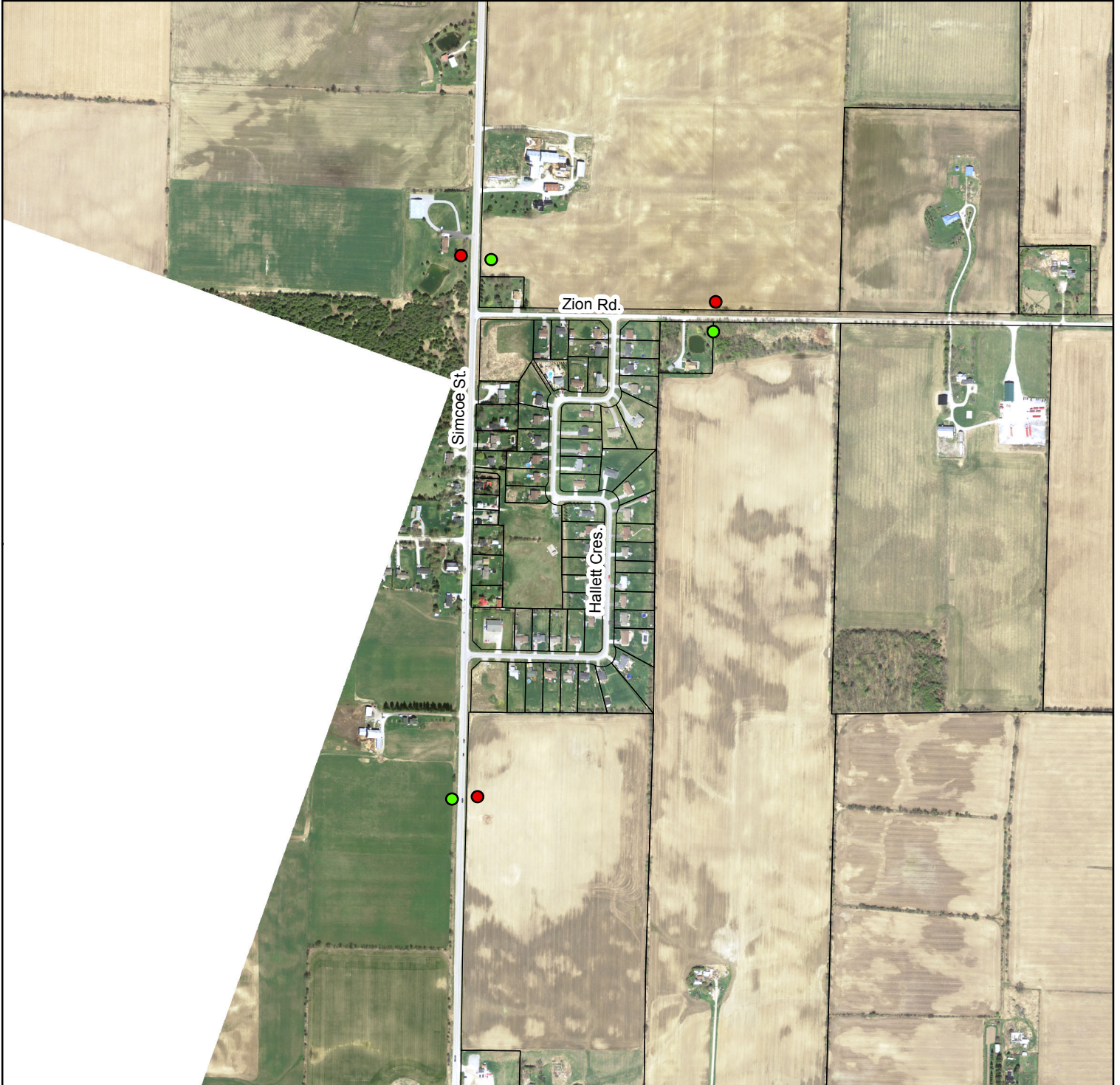
The foregoing information is given for convenience only and it should be clearly understood that you must satisfy yourself as to whether the premises and the existing or proposed use thereof are, or would be, in conformity with all applicable by-laws and regulations of the municipality.

All distances and locations are approximate and are not of survey quality. This map is illustrative only. Do not rely on it as being a precise indicator of privately or publicly owned land, routes, locations or features, nor as a guide to navigate.



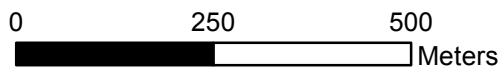
Projection: Transverse Mercator
Coordinate System: NAD83, Zone 17

Appendix C Sign Requirements Sonya



Speed Area Zone

- 40 Area Begins
- 40 Area Ends
- Road Class Change 3 to 4
- Road Class Change 4 to 5



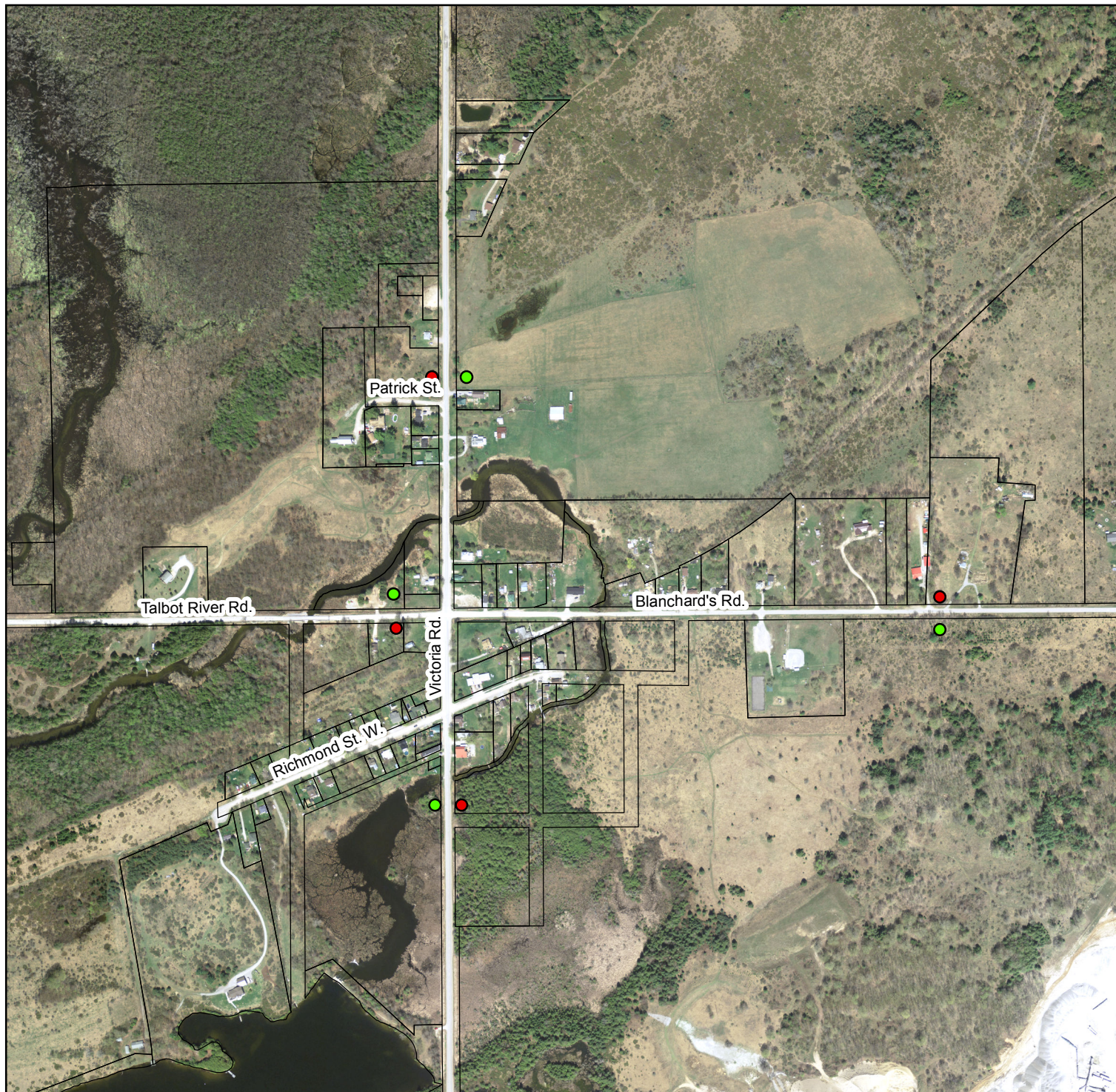
Projection: Transverse Mercator
Coordinate System: NAD83, Zone 17

Map produced by the City of Kawartha Lakes Engineering Department with data obtained under license. Reproduction without permission is prohibited.

The foregoing information is given for convenience only and it should be clearly understood that you must satisfy yourself as to whether the premises and the existing or proposed use thereof are, or would be, in conformity with all applicable by-laws and regulations of the municipality.

All distances and locations are approximate and are not of survey quality. This map is illustrative only. Do not rely on it as being a precise indicator of privately or publicly owned land, routes, locations or features, nor as a guide to navigate.

Appendix C Sign Requirements Victoria Road



Speed Area Zone

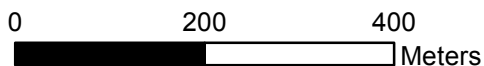
- 40 Area Begins
- 40 Area Ends
- Road Class Change 3 to 4
- Road Class Change 4 to 5



Map produced by the City of Kawartha Lakes Engineering Department with data obtained under license. Reproduction without permission is prohibited.

The foregoing information is given for convenience only and it should be clearly understood that you must satisfy yourself as to whether the premises and the existing or proposed use thereof are, or would be, in conformity with all applicable by-laws and regulations of the municipality.

All distances and locations are approximate and are not of survey quality. This map is illustrative only. Do not rely on it as being a precise indicator of privately or publicly owned land, routes, locations or features, nor as a guide to navigate.



Projection: Transverse Mercator
Coordinate System: NAD83, Zone 17

Appendix C Sign Requirements Woodville



Speed Area Zone

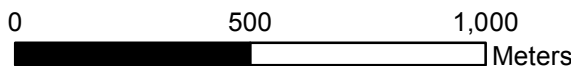
- 40 Area Begins
- 40 Area Ends
- Road Class Change 3 to 4
- Road Class Change 4 to 5



Map produced by the City of Kawartha Lakes Engineering Department with data obtained under license. Reproduction without permission is prohibited.

The foregoing information is given for convenience only and it should be clearly understood that you must satisfy yourself as to whether the premises and the existing or proposed use thereof are, or would be, in conformity with all applicable by-laws and regulations of the municipality.

All distances and locations are approximate and are not of survey quality. This map is illustrative only. Do not rely on it as being a precise indicator of privately or publicly owned land, routes, locations or features, nor as a guide to navigate.



Projection: Transverse Mercator
Coordinate System: NAD83, Zone 17