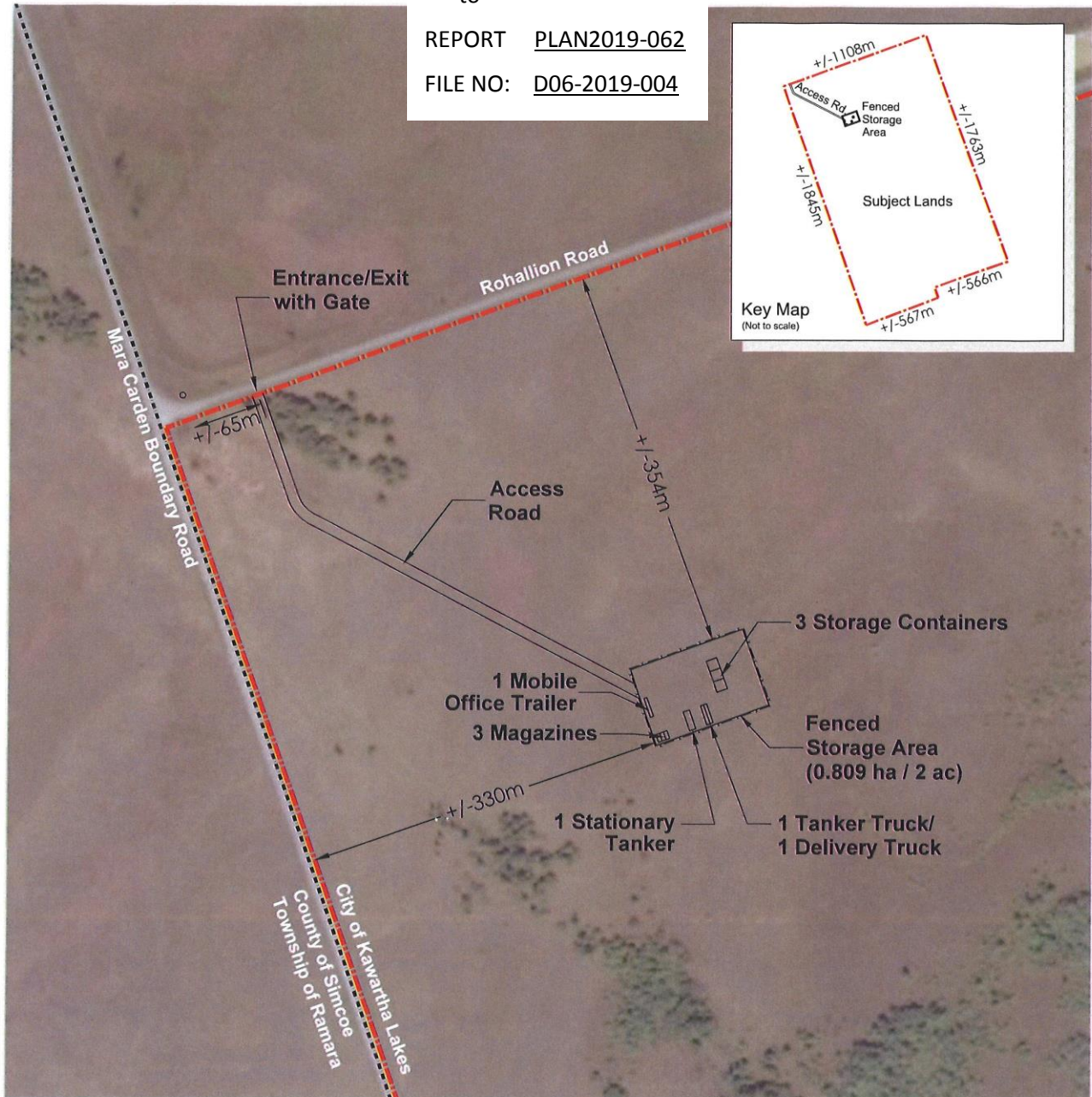


APPENDIX " C "

to


REPORT PLAN2019-062

FILE NO: D06-2019-004



Preliminary Concept Plan Proposed Explosives Storage Depot

LEGEND

 Subject Lands

DATE: November 5, 2019

FILE: 9633N

SCALE 1 : 5,000

DRAWN: GC/DGS



James Dick Construction Limited
Part of Lots 30, 31 and 32, Concession 1
(former Geographic Township of Eldon)
City of Kawartha Lakes

Base Map Sources:
Imagery - Google Earth (August 22, 2016)

K:\9633N-JAMES DICK CONSTRUCTION-KAWARTHA LAKES-ROHALLION ROAD-CONCEPT
PLAN-CONCEPT PLAN NOVEMBER 5 2019.DWG

MHBC PLANNING
URBAN DESIGN
& LANDSCAPE
ARCHITECTURE
205-340 BINGEMANS CENTRE DR. KITCHENER, ON. N2B 3X9
P: 519.576.3650 F: 519.576.0121 | WWW.MHBCPLAN.COM