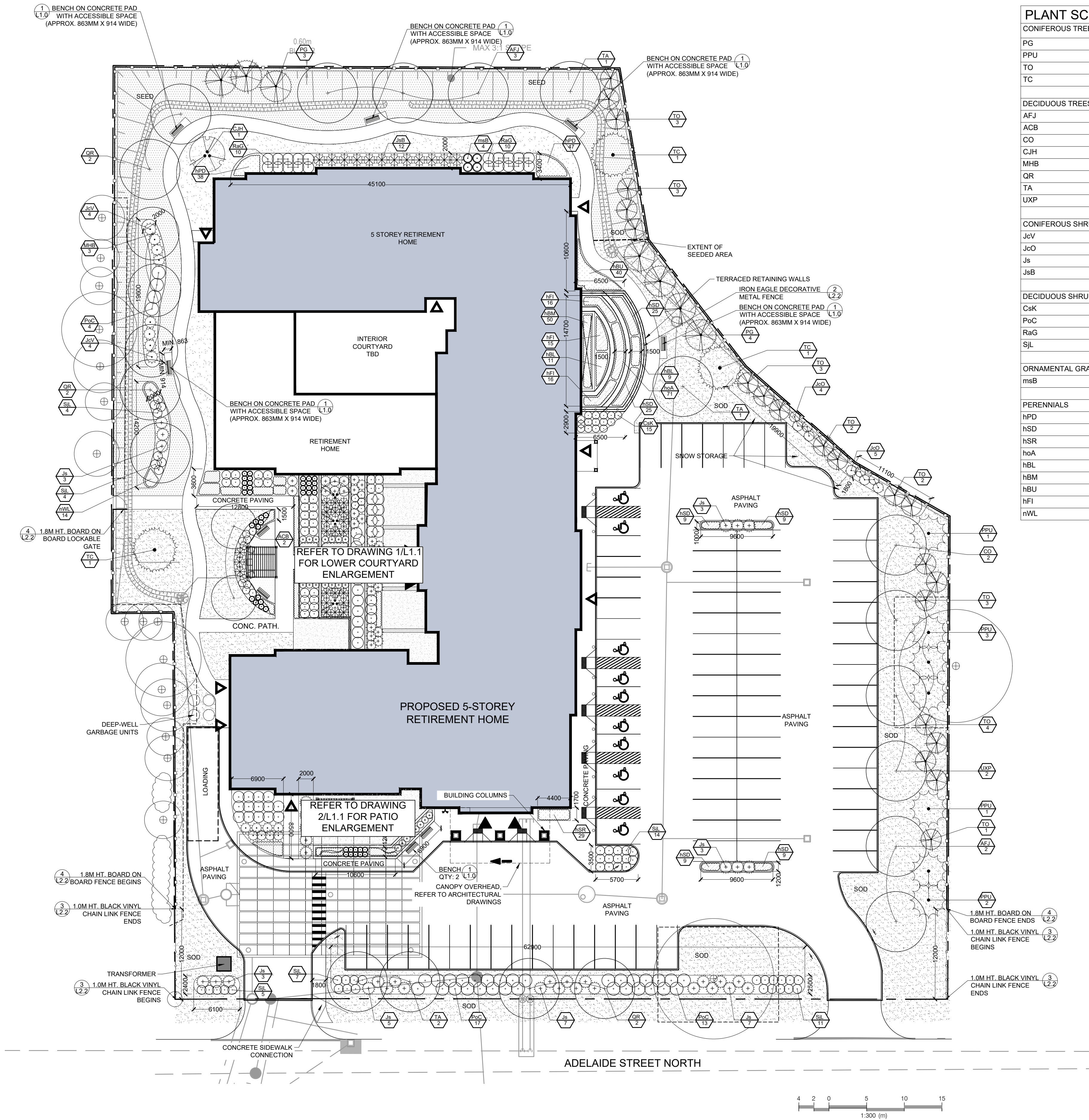


047	1 Quercus rubra	Red Oak	250	good	10	Adjacent property	Retain
048	1 Quercus rubra	Red Oak	225	Good	7	Adjacent property	Retain
049	1 Picea canadensis	Colorado spruce	250	Good	5	Adjacent property	Retain
050	1 Picea pungens	Colorado spruce	250	Good	6	Adjacent property	Retain
051	47 Acer negundo	Manitoba Maple	4@100	Fair-good	6		Remove, grading
052	27 Acer platanoides	Norway Maple	1@250, 1@250	Good	6		Remove, grading
053	54 Acer platanoides	Norway Maple	5@100	Fair	4		Remove, grading
054	27 Juglans nigra	Black Walnut	2@300	Good	15		Remove, grading
055	1 Juglans nigra	Black Walnut	2@300	Fair-good	8		Remove, grading
056	37 Acer negundo	Manitoba Maple	2@200, 1@125	Fair	8		Remove, grading
057	77 Acer platanoides	Norway Maple	2@200, 5@100	Fair	8		Remove, grading
058	1 Acer platanoides	Norway Maple	225	Fair-good	6		Remove, grading
059	1 Thuja occidentalis	Cedar	300	Fair-good	5	Adjacent property	Retain
060	21 Thuja occidentalis	Cedar	1@100, 1@250	Fair	5	Adjacent property	Retain
061	1 Thuja occidentalis	Cedar	200	Fair	5	Adjacent property	Retain
062	1 Acer platanoides	Norway Maple	400	Fair-Poor	10	Adjacent property	Retain
063	1 Thuja occidentalis	Cedar	450	Good	7	Adjacent property	Retain
064	1 Tilia americana	Basswood	275	Fair	7	Adjacent property	Retain
065	67 Acer platanoides	Norway Maple	6@200	Poor	5	Adjacent property	Retain
066	27 Acer platanoides	Norway Maple	1@250, 1@200	Fair	6	Adjacent property	Retain
067	141 Acer platanoides - group	Norway Maple	14@40-100	Fair-Good	10		Retain
068	1 Ulmus sp.	Elm	300	Poor	5	adjacent property	Retain
069	141 Syringa sp.	Acer negundo	14@50-150	Fair-good	8	Adjacent property	Retain
070	1 Acer platanoides	Norway Maple	300	Good	7		Remove, building construction
071	1 Acer platanoides	Norway Maple	275	Good	8		Remove, building construction



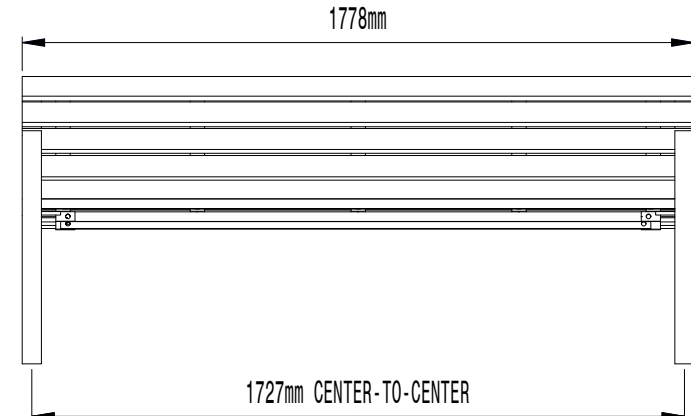
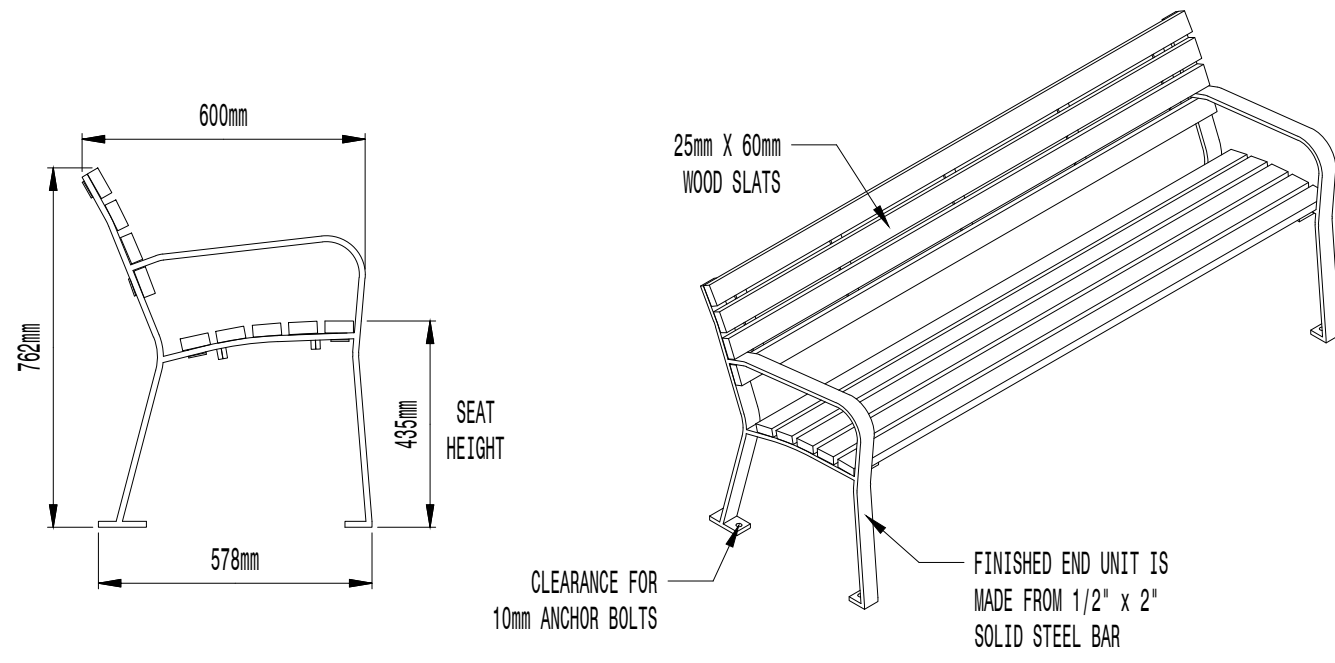


PLANT SCHEDULE OVERALL LANDSCAPE					
CONIFEROUS TREES	QTY	BOTANICAL NAME	COMMON NAME	SIZE	CONTAINER
PG	7	Picea glauca	White Spruce	200cm Ht.	W.B.
PPU	7	Picea pungens	Colorado Spruce	175cm Ht.	W.B./B&B
TO	21	Thuja occidentalis	Eastern White Cedar	250cm Ht.	W.B.
TC	3	Tsuga canadensis	Canadian Hemlock	200cm Ht.	W.B.
DECIDUOUS TREES	QTY	BOTANICAL NAME	COMMON NAME	SIZE	CONTAINER
AFJ	5	Acer freemanii 'Jeffersred' TM	Autumn Blaze Maple	60mm Cal.	W.B.
ACB	2	Aesculus x carnea 'Brioti'	Ruby-red Horsechestnut	60mm Cal.	W.B.
CO	2	Celtis occidentalis	Common Hackberry	60mm Cal.	W.B.
CJH	1	Cercidiphyllum japonicum 'Hanna's Heart'	Katsura Tree	250cm ht., clump	W.B.
MHB	3	Malus hybrid 'Brandywine'	Brandywine Crabapple	60mm Cal.	W.B.
QR	6	Quercus rubra	Red Oak	60mm Cal.	W.B.
TA	4	Tilia americana	Basswood	60mm Cal.	W.B.
UXP	2	Ulmus x 'Pioneer'	Pioneer Hybrid Elm	60mm Cal.	W.B.
CONIFEROUS SHRUBS	QTY	BOTANICAL NAME	COMMON NAME	SIZE	CONTAINER
JcV	8	Juniperus chinensis sargentii 'Viridis'	Green Sargent Juniper	40cm	3 gal.
JcO	9	Juniperus chinensis 'Ontario Green'	Ontario Green Juniper	175cm	W.B.
Js	31	Juniperus sabina	Savin Juniper	50cm	3 gal.
JsB	12	Juniperus sabina 'Blue Danube'	Blue Danube Juniper	50cm	3 gal.
DECIDUOUS SHRUBS	QTY	BOTANICAL NAME	COMMON NAME	SIZE	CONTAINER
CsK	15	Cornus sericea 'Kelsey'	Kelsey Dogwood	50cm	3 gal.
PoC	34	Physocarpus opulifolius 'Coppertina'	Coppertina Ninebark	60cm	3 gal.
RaG	20	Rhus aromatica 'Gro-Low'	Gro-Low Fragrant Sumac	50cm	3 gal.
SJL	45	Spiraea japonica 'Little Princess'	Little Princess Japanese Spirea	60cm	3 gal.
ORNAMENTAL GRASSES	QTY	BOTANICAL NAME	COMMON NAME	SIZE	CONTAINER
msB	4	Miscanthus sinensis 'Berlin'	Berlin Maiden Grass	---	1 gal.
PERENNIALS	QTY	BOTANICAL NAME	COMMON NAME	SIZE	CONTAINER
hPD	85	Hemerocallis x 'Purple D'oro'	Purple D'oro Daylily	---	1 gal.
hSD	86	Hemerocallis x 'Stella D'Oro'	Stella D'Oro Daylily	---	1 gal.
hSR	29	Hemerocallis x 'Stella In Red'	Stella In Red Daylily	---	1 gal.
hoA	71	Hosta x 'Autumn Frost'	Autumn Frost Hosta	---	1 gal.
hBL	20	Hosta x 'Blue Ivory'	Blue Ivory Hosta	---	1 gal.
hBM	50	Hosta x 'Blue Mouse Ears'	Blue Mouse Ears Hosta	---	1 gal.
hBU	40	Hosta x 'Blue Umbrellas'	Blue Umbrellas Hosta	---	1 gal.
hFI	47	Hosta x 'Fire Island'	Fire Island Hosta	---	1 gal.
nWL	28	Nepeta x faassanii 'Walkers Low'	Walkers Low Catmint	---	1 gal.

VICTOR STANLEY™
Create a timeless moment.™

P.O. DRAWER 330 - DUNKIRK, MD 20754 USA
TOLL FREE: (800) 368-2573 (USA & CANADA)
TEL (301) 855-8300 - FAX (410) 257-7579
WEB SITE: HTTP://WWW.VICTORSTANLEY.COM

* ALL DIMENSIONS ARE IN MILLIMETERS *



CONTIGUOUS WOOD SLAT BENCH
900mm STANDARD 1.8 METER LENGTH

AVAILABLE OPTIONS:

POWDER COATING

15 STANDARD COLORS, 2 OPTIONAL METALLIC COLORS,
CUSTOM COLORS (INCLUDING THE RAL RANGE)

UNDERCOATING AVAILABLE (ONLY ON
1.2 METER & 1.8 METER AVAILABLE WITH OPTIONAL ANCHERS)

NOTES:

1. DRAWINGS NOT TO SCALE, DO NOT SCALE DRAWINGS.

2. ALL FABRICATED METAL COMPONENTS ARE STEEL, UNPAINTED, ETCHED, PHOSPHATIZED, PREPAINTED, AND ELECTROSTATICALLY
POWDER COATED WITH T.B.C. POLYESTER POWDER COATINGS. PRODUCTS ARE FULLY CLEANED AND PRETREATED, PREPAINTED
AND COATED WITH T.B.C. POLYESTER POWDER COATINGS. COATED PARTS ARE THEN FULLY CURED TO COATING MANUFACTURER'S
SPECIFICATIONS. THE THICKNESS OF THE RESULTING FINISH APPROXIMATELY 0.015 IN (0.000394 METER).

3. IT IS NOT RECOMMENDED TO LOCATE ANCHOR BOLTS UNTIL BENCH IS IN PLACE. THIS VICTOR STANLEY, INC. PRODUCT MUST BE
PERMANENTLY APPLIED TO THE GROUND. CONSULT YOUR LOCAL CODES FOR REGULATIONS.

4. ANCHOR BOLTS NOT PROVIDED BY VICTOR STANLEY, INC.

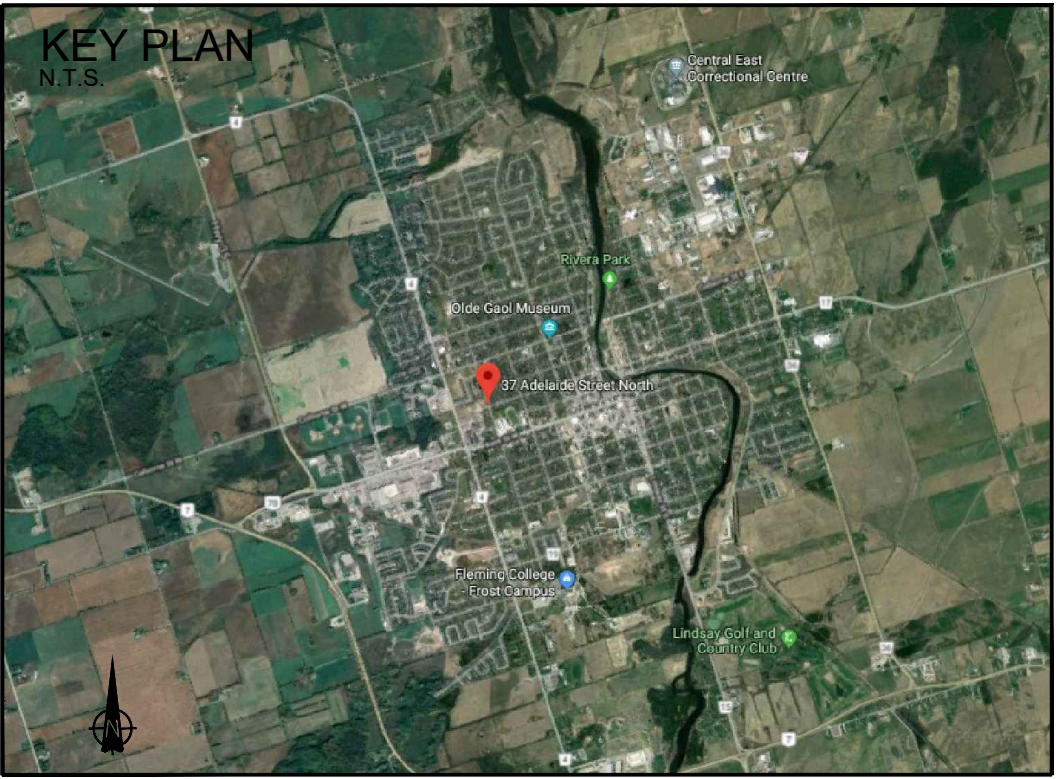
5. FOR HIGH SALT AMBIENT CLIMATES, HOT-DIP GALVANIZING BEFORE POWDER COATING IS AVAILABLE. HOT-DIP GALVANIZING IS PERFORMED FOR VICTOR STANLEY, INC. BY AN
EXPERIENCED QUALIFIED FIRM TO WHICH PRODUCTS ARE SHIPPED FOR GALVANIZING. HOT-DIP GALVANIZING INCLUDES AN IMMERSIVE PRE-TREATMENT AND IMMERSION IN A TANK
OF CAUSTIC LIQUID ZINC AT AN AROUND 800°F (427°C). THE RESULTING SURFACE IS RESISTANT TO RUST BUT HAS SOME UNEVENNESS RESULTING FROM THE CORROSION OF THE ZINC
TO THE STEEL SURFACE. AS A RESULT, THE POWDER COATING SURFACE FINISH OVER THAT GALVANIZED SURFACE MAY EXHIBIT BUMPS, UNEVENNESS, AND MAY NOT BE
AS SMOOTH AS THE STANDARD FINISH; THIS UNEVEN AND INCONSISTENT FINISH IS NORMAL FOR GALVANIZING. CONTACT MANUFACTURER FOR DETAILS.

6. ALL SPECIFICATIONS ARE SUBJECT TO CHANGE. CONTACT MANUFACTURER FOR DETAILS.

7. THIS PRODUCT IS SHIPPED PARTIALLY UNASSEMBLED.

LENGTHS
STANDARD: 61in
STANDARD: 1.2m
STANDARD: 1.8m (AS SHOWN)

① BENCH ON CONCRETE PAD - DETAIL PROVIDED BY VICTOR STANLEY
MODEL: RBW-28, SCALE NTS



LEGEND

- EXISTING DECIDUOUS TREE TO BE PRESERVED
- PROPOSED DECIDUOUS TREE
- PROPOSED DECIDUOUS AND CONIFEROUS SHRUBS
- PROPOSED PERENNIALS
- PLANTING KEY
- COLOURED CONCRETE PAVING
- PLAIN CONCRETE PAVING
- RIVER ROCK
- SOD
- SEED
- PROPERTY LINE

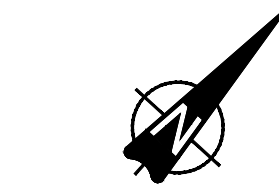
GENERAL NOTES:

- DRAWINGS NOT TO BE USED FOR CONSTRUCTION UNLESS AUTHORIZED BY THE LANDSCAPE ARCHITECT
- CONTRACTOR SHALL REPORT ANY DISCREPANCIES BETWEEN THE DRAWINGS AND SITE CONDITIONS PRIOR TO COMMENCEMENT OF THE WORK
- ALL UTILITY LOCATES ARE THE RESPONSIBILITY OF THE CONTRACTOR. HAND DIG WITHIN THE LIMITS RECOMMENDED BY THE SERVICE UTILITY. UTILITY CONFLICTS WITH PROPOSED TREE LOCATIONS MUST BE REPORTED IMMEDIATELY TO THE LANDSCAPE ARCHITECT
- BASE DRAWING PROVIDED BY MSA.
- VEGETATION INVENTORY BY GSP GROUP INC.
- FOR GRADING INFORMATION REFER TO DRAWING BY GH.D. FOR SERVICING INFORMATION REFER TO DRAWINGS BY GH.D.
- LANDSCAPE DRAWINGS SHOW ENGINEERING INFORMATION FOR DESIGN PURPOSES ONLY. DO NOT CONSTRUCT ENGINEERING WORKS FROM THESE DRAWINGS.

LANDSCAPE PLAN

LINDSAY RETIREMENT HOME
37 ADELAIDE STREET N, LINDSAY

ISSUED FOR SITE PLAN
APPROVAL, NOT FOR
CONSTRUCTION.



DATE	ISSUE	BY
06DEC19	Issued for REVIEW/COORDINATION	RE
19DEC19	Issued for SPA	RE
30JUL20	Re-issued for SPA	RE
DATE	REVISIONS	BY



20-72 Victoria Street South
Edmonton, Alberta T6C 4P9
T 519 589 8883
F 519 589 8843

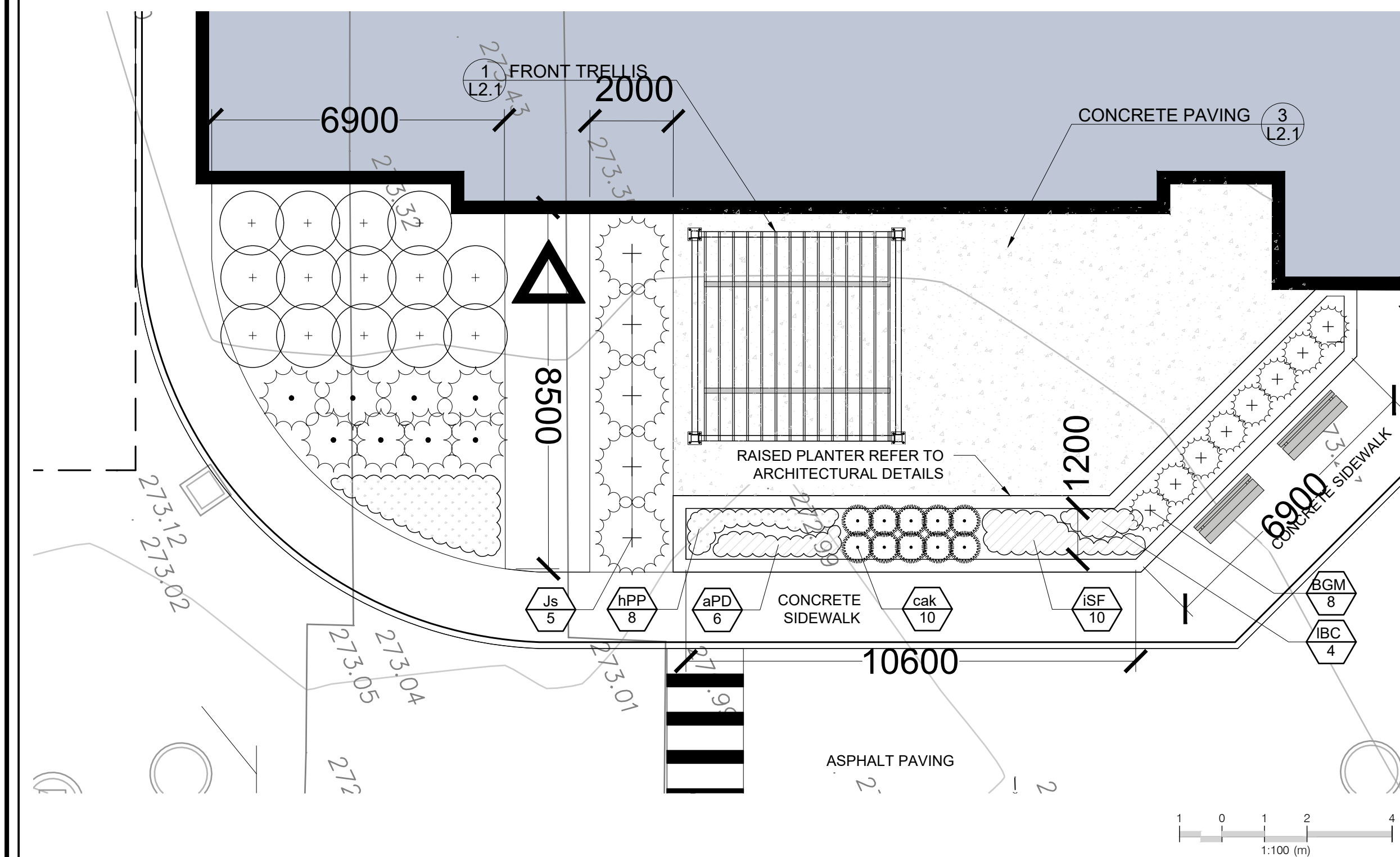
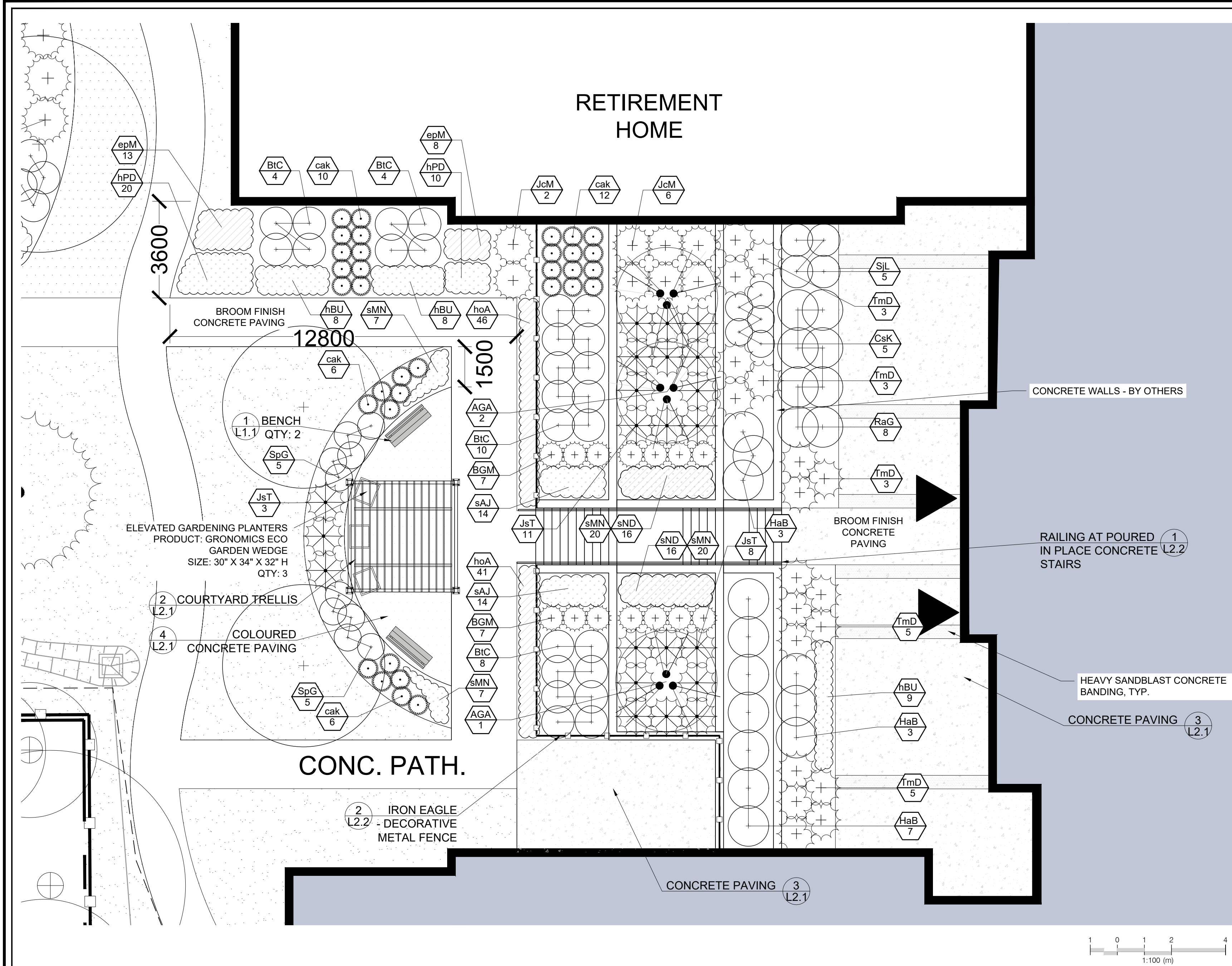
162 Locke Street South, Suite 200
Windsor, Ontario N9A 4A8
T 905 972 1477

www.gspgroup.ca

Date: November 2019
Scale: 1:300 (m)

Drawn By: RE
Project No.: 19261

L1.0

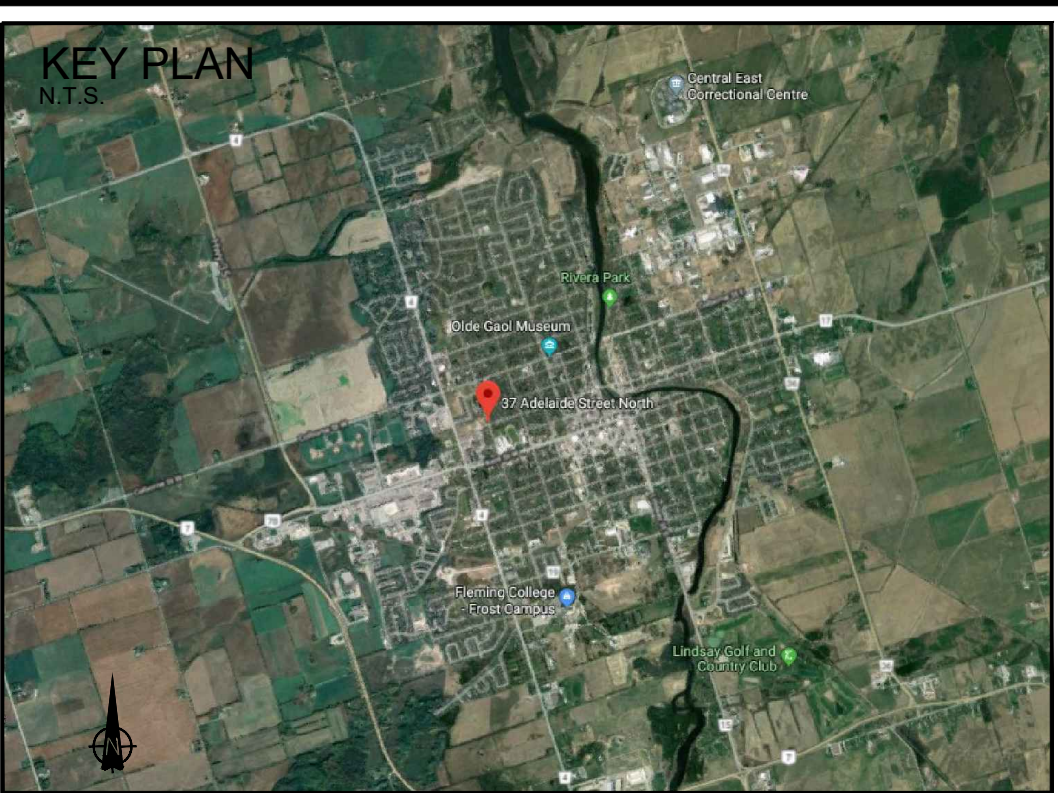


PLANT SCHEDULE FRONT PATIO

CONIFEROUS SHRUBS	QTY	BOTANICAL NAME	COMMON NAME	SIZE	CONTAINER
BGM	8	Buxus x 'Green Mountain'	Green Mountain Boxwood	40cm	3 gal.
JcG	8	Juniperus chinensis 'Gold Coast' TM	Gold Coast Juniper	50cm	3 gal.
Js	5	Juniperus sabina	Savin Juniper	50cm	3 gal.
DECIDUOUS SHRUBS	QTY	BOTANICAL NAME	COMMON NAME	SIZE	CONTAINER
RaG	14	Rhus aromatica 'Gro-Low'	Gro-Low Fragrant Sumac	50cm	3 gal.
ORNAMENTAL GRASSES	QTY	BOTANICAL NAME	COMMON NAME	SIZE	CONTAINER
cak	10	Calamagrostis acutiflora 'Karl Foerster'	Feather Reed Grass	---	1 gal.
PERENNIALS	QTY	BOTANICAL NAME	COMMON NAME	SIZE	CONTAINER
aPD	6	Aster novae-angliae 'Purple Dome'	Purple Dome New England Aster	---	1 gal.
hPD	26	Hemerocallis x 'Purple D'oro'	Purple D'oro Daylily	---	1 gal.
hPP	8	Heuchera micrantha 'Palace Purple'	Palace Purple Coral Bells	---	1 gal.
ISF	9	Iris sibirica 'Strawberry Fair'	Siberian Iris	---	1 gal.
IBC	4	Leucanthemum x superbum 'Banana Cream'	Shasta Daisy	---	1 gal.

PLANT SCHEDULE LOWER COURTYARD

DECIDUOUS TREES	QTY	BOTANICAL NAME	COMMON NAME	SIZE	CONTAINER
AGA	3	Amelanchier x grandiflora 'Autumn Brilliance'	'Autumn Brilliance' Serviceberry	50mm Cal.	W.B.
CONIFEROUS SHRUBS	QTY	BOTANICAL NAME	COMMON NAME	SIZE	CONTAINER
BGM	14	Buxus x 'Green Mountain'	Green Mountain Boxwood	40cm	3 gal.
JcM	8	Juniperus chinensis 'Mint Julep'	Mint Julep Juniper	60cm	3 gal.
JsT	22	Juniperus sabina 'Tamariscifolia'	Tamarix Savin Juniper	50cm	3 gal.
TmD	19	Taxus x media 'Densiformis'	Dense Yew	50cm	3 gal.
DECIDUOUS SHRUBS	QTY	BOTANICAL NAME	COMMON NAME	SIZE	CONTAINER
BIC	26	Berberis thunbergii 'Concorde'	Concorde Barberry	50cm	3 gal.
CsK	5	Cornus sericea 'Kelsey'	Kelsey Dogwood	50cm	3 gal.
HaB	13	Hydrangea arborescens 'Annabelle'	Annabelle Hydrangea	60cm	3 gal.
RaG	8	Rhus aromatica 'Gro-Low'	Gro-Low Fragrant Sumac	50cm	3 gal.
SpG	10	Spiraea japonica 'Goldflame'	Goldflame Spirea	60cm	3 gal.
SjL	4	Spiraea japonica 'Little Princess'	Little Princess Japanese Spirea	60cm	3 gal.
ORNAMENTAL GRASSES	QTY	BOTANICAL NAME	COMMON NAME	SIZE	CONTAINER
cak	34	Calamagrostis acutiflora 'Karl Foerster'	Feather Reed Grass	---	1 gal.
PERENNIALS	QTY	BOTANICAL NAME	COMMON NAME	SIZE	CONTAINER
epM	21	Echinacea purpurea 'Merlot'	Merlot Coneflower	---	1 gal.
hPD	30	Hemerocallis x 'Purple D'oro'	Purple D'oro Daylily	---	1 gal.
hoA	87	Hosta x 'Autumn Frost'	Autumn Frost Hosta	---	1 gal.
hBU	25	Hosta x 'Blue Umbrellas'	Blue Umbrellas Hosta	---	1 gal.
sMN	54	Salvia nemorosa 'May Night'	Sage	---	1 gal.
sND	32	Salvia nemorosa 'New Dimension Rose'	Perennial Sage	---	1 gal.
sAJ	28	Sedum x 'Autumn Joy'	Autumn Joy Sedum	---	1 gal.



LEGEND

- EXISTING DECIDUOUS TREE TO BE PRESERVED
- PROPOSED DECIDUOUS TREE
- PROPOSED DECIDUOUS AND CONIFEROUS SHRUBS
- PROPOSED PERENNIALS
- PLANTING KEY
- COLOURED CONCRETE PAVING
- PLAIN CONCRETE PAVING
- RIVER ROCK
- SOD
- SEED
- PROPERTY LINE

GENERAL NOTES:

- DRAWINGS NOT TO BE USED FOR CONSTRUCTION UNLESS AUTHORIZED BY THE LANDSCAPE ARCHITECT
- CONTRACTOR SHALL REPORT ANY DISCREPANCIES BETWEEN THE DRAWINGS AND SITE CONDITIONS PRIOR TO COMMENCEMENT OF THE WORK
- ALL UTILITY LOCATES ARE THE RESPONSIBILITY OF THE CONTRACTOR. HAND DIG WITHIN THE LIMITS RECOMMENDED BY THE SERVICE UTILITY. UTILITY CONFLICTS WITH PROPOSED TREE LOCATIONS MUST BE REPORTED IMMEDIATELY TO THE LANDSCAPE ARCHITECT
- BASE DRAWING PROVIDED BY MSA.
- VEGETATION INVENTORY BY GSP GROUP INC.
- FOR GRADING INFORMATION REFER TO DRAWING BY GHD. FOR SERVICING INFORMATION REFER TO DRAWINGS BY GHD.
- LANDSCAPE DRAWINGS SHOW ENGINEERING INFORMATION FOR DESIGN PURPOSES ONLY. DO NOT CONSTRUCT ENGINEERING WORKS FROM THESE DRAWINGS.

COURTYARD ENLARGEMENT PLAN

LINDSAY RETIREMENT HOME

37 ADELAIDE STREET N, LINDSAY

ISSUED FOR SITE PLAN
APPROVAL, NOT FOR
CONSTRUCTION.



DATE	ISSUE	BY
06DEC19	Issued for REVIEW/COORDINATION	RE
19DEC19	Issued for SPA	RE
30JUL20	Re-Issued for SPA	RE
DATE	REVISIONS	BY



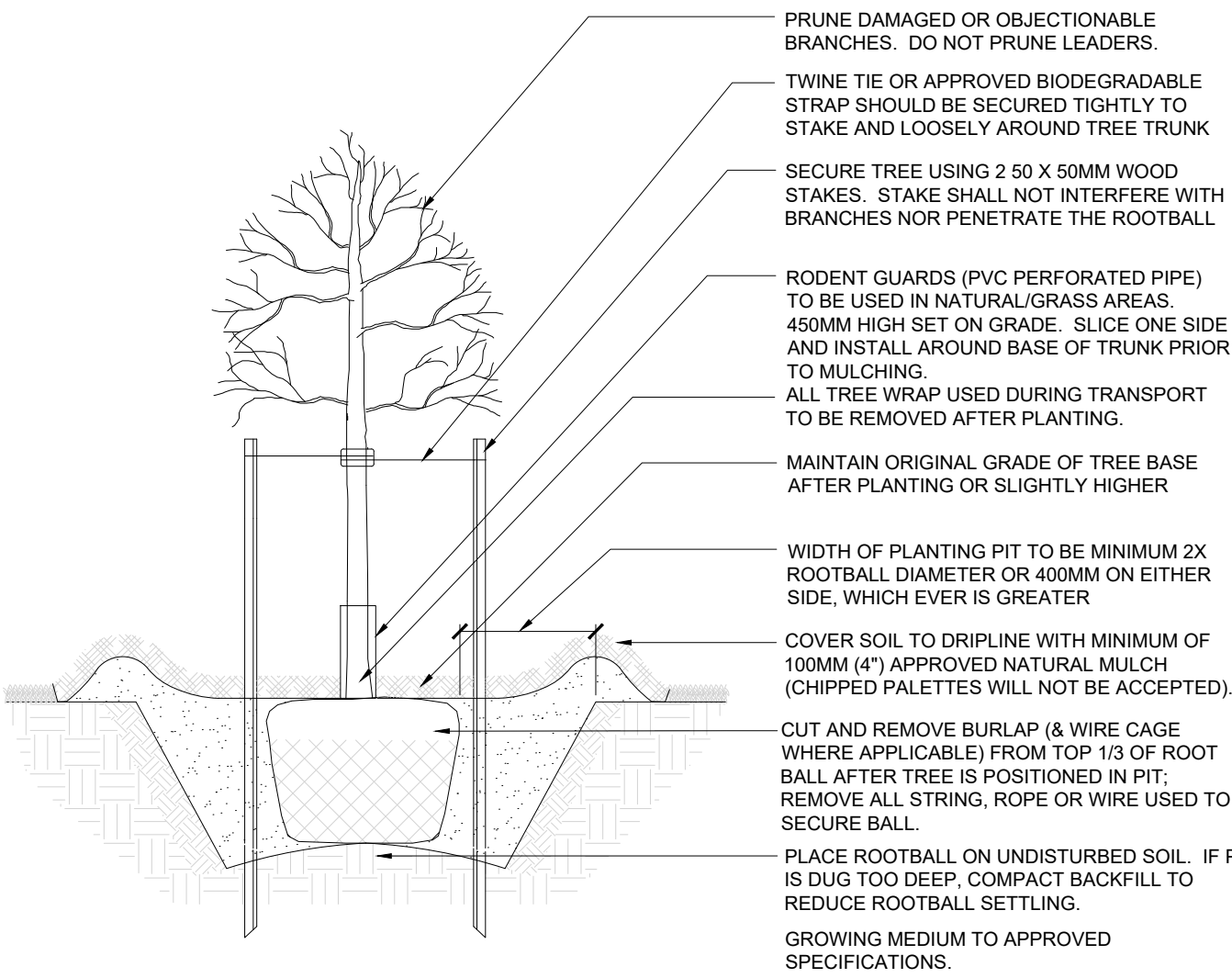
20-72 Victoria Street South
Edmonton, Ontario T6C 4P8
T 519 589 8883
F 519 589 8843

162 Locke Street South, Suite 200
Hamilton, Ontario L8P 4A9
T 905 972 1477

Date: November 2019
Scale: 1:100 (m)

Drawn By: RE
Project No.: 19261

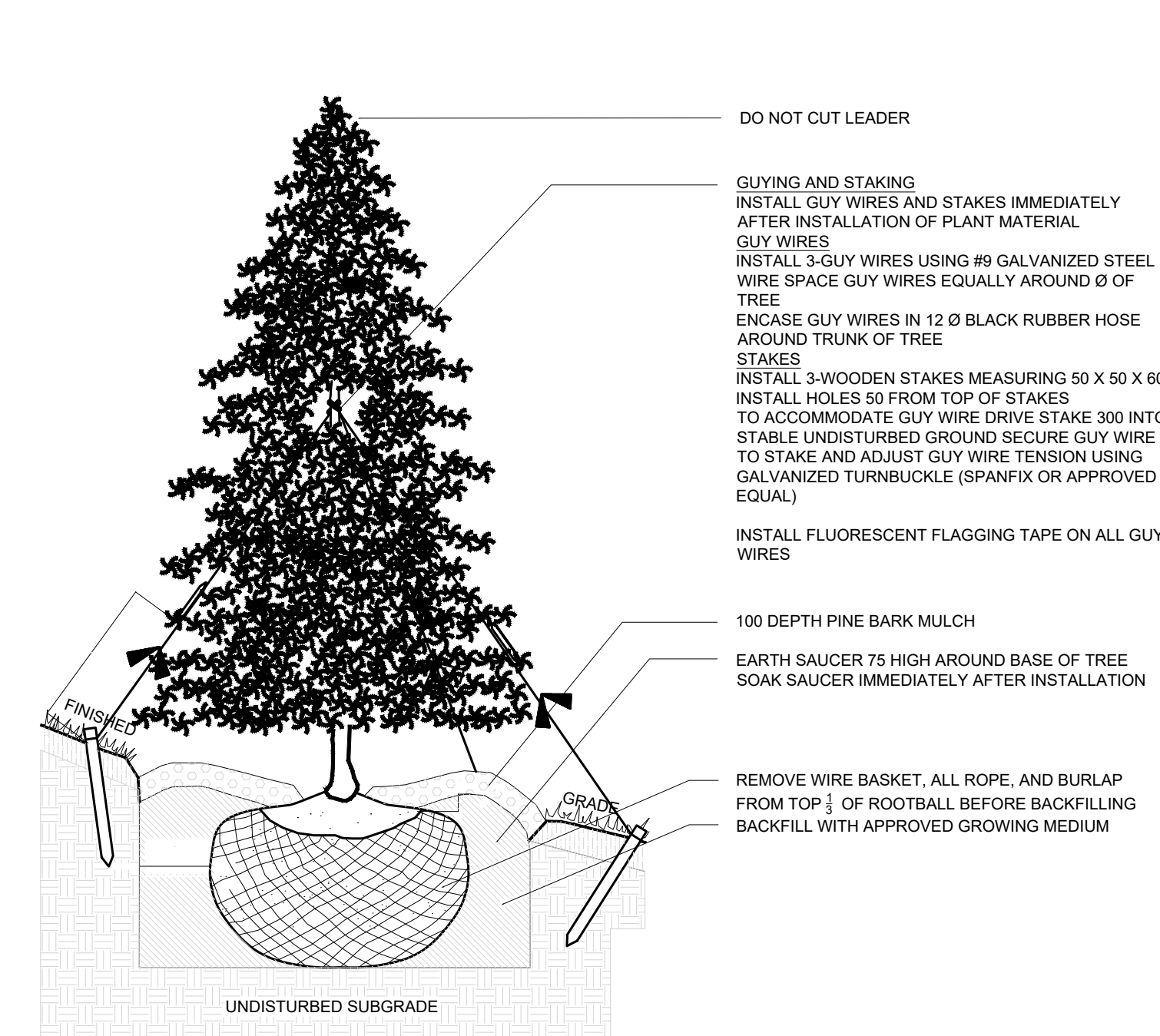
L1.1



NOTES

1. GROWING MEDIUM MIX: 4 PARTS TOPSOIL, 1 PART COMPOST, 1 PART SHREDDED PEAT & APPLICATION OF HIGH PHOSPHOROUS FERTILIZER (0-20-0)
2. PLANT MATERIAL SHALL BE THOROUGHLY WATERED AT TIME OF PLANTING.
3. PLANT MATERIAL SHALL BE SET PLUMB IN THE MIDDLE OF THE PIT.
4. TREE SHALL BEAR SAME RELATION OR SLIGHTLY HIGHER TO FINISHED GRADE AS ORIGINALLY GROWN.
5. PLANT STOCK MOVED WHILE IN LEAF SHALL BE COVERED WHILE IN TRANSIT. ROOTS SHOULD BE KEPT MOIST UNTIL PLANTED. TREES IN LEAF TO BE TREATED WITH ANTI-DESICANT.
6. DIMENSIONS ARE IN MILLIMETERS UNLESS OTHERWISE NOTED.
7. STAKING IS TO OCCUR ONLY AT THE DIRECTION OF THE LANDSCAPE ARCHITECT.
8. 100MM HIGH SAUCER EXCEPT WHEN PLANTING IN BED.

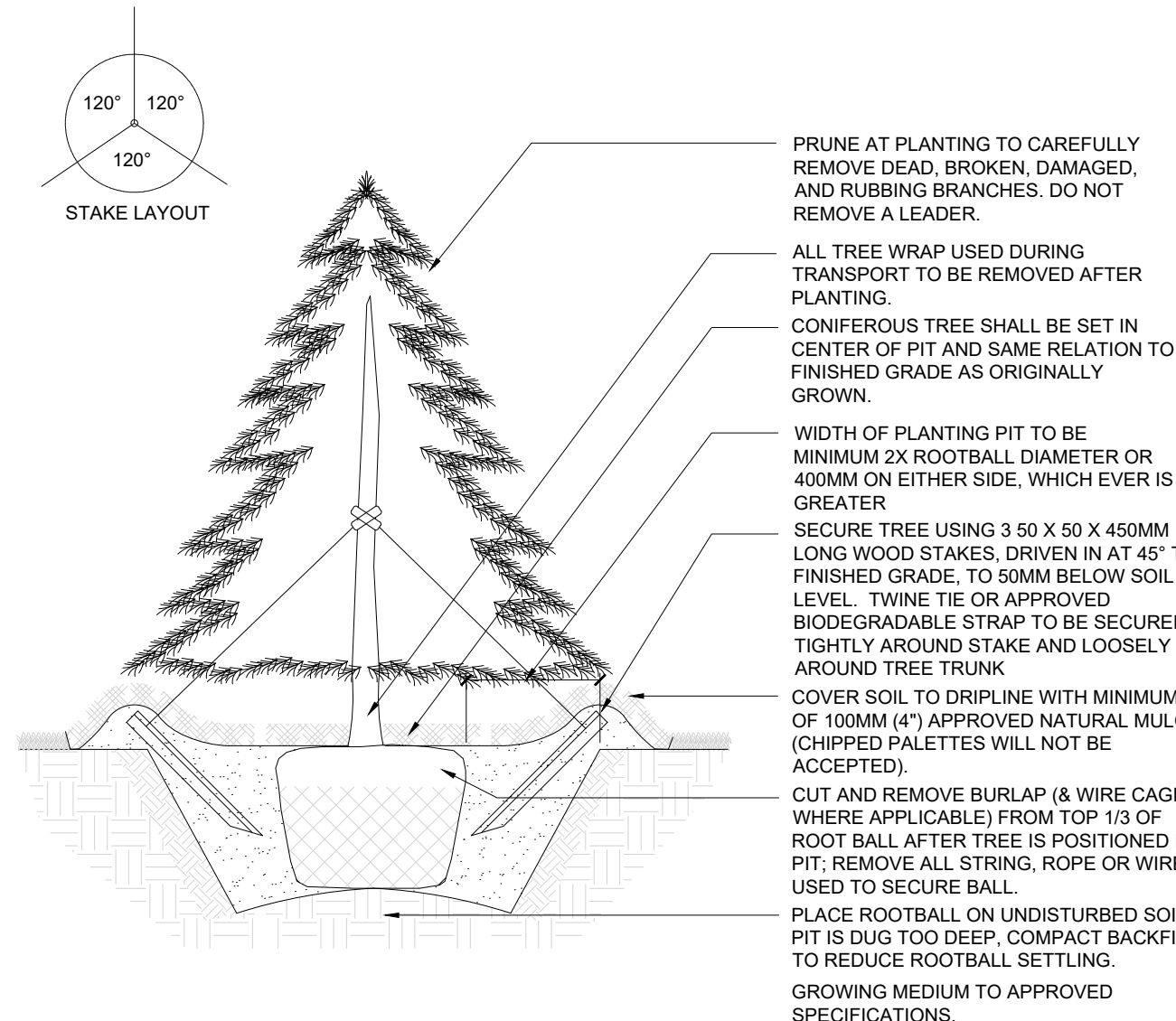
DECIDUOUS TREE PLANTING B.B/W.B - UP TO 80mm CALIPER N.T.S.



NOTES:

1. ALL DIMENSIONS IN MILLIMETERS UNLESS OTHERWISE NOTED.
2. BACKFILL WITH APPROVED GROWING MEDIUM.
3. PLANTING PIT DEPTH WILL BE THE SAME DEPTH AS THE ROOT BALL AND 900 OR 1.5 TIMES THE WIDTH - WHICHEVER IS GREATER.
4. WIRE TWISTED AROUND TREE GUARD WILL BE TWISTED BACK TO TREE SIDE OF GUARD.
5. TREE BASE AT TRUNK WILL BEAR SAME RELATION TO FINISHED GRADE AS IT BORE TO PREVIOUS EXISTING GRADE.
6. SOAK COMPLETELY WITH WATER AND MULCH IMMEDIATELY.
7. PLANT TREE 75 ABOVE EXISTING ADJACENT GRADE TO ACCOMMODATE SETTLEMENT.

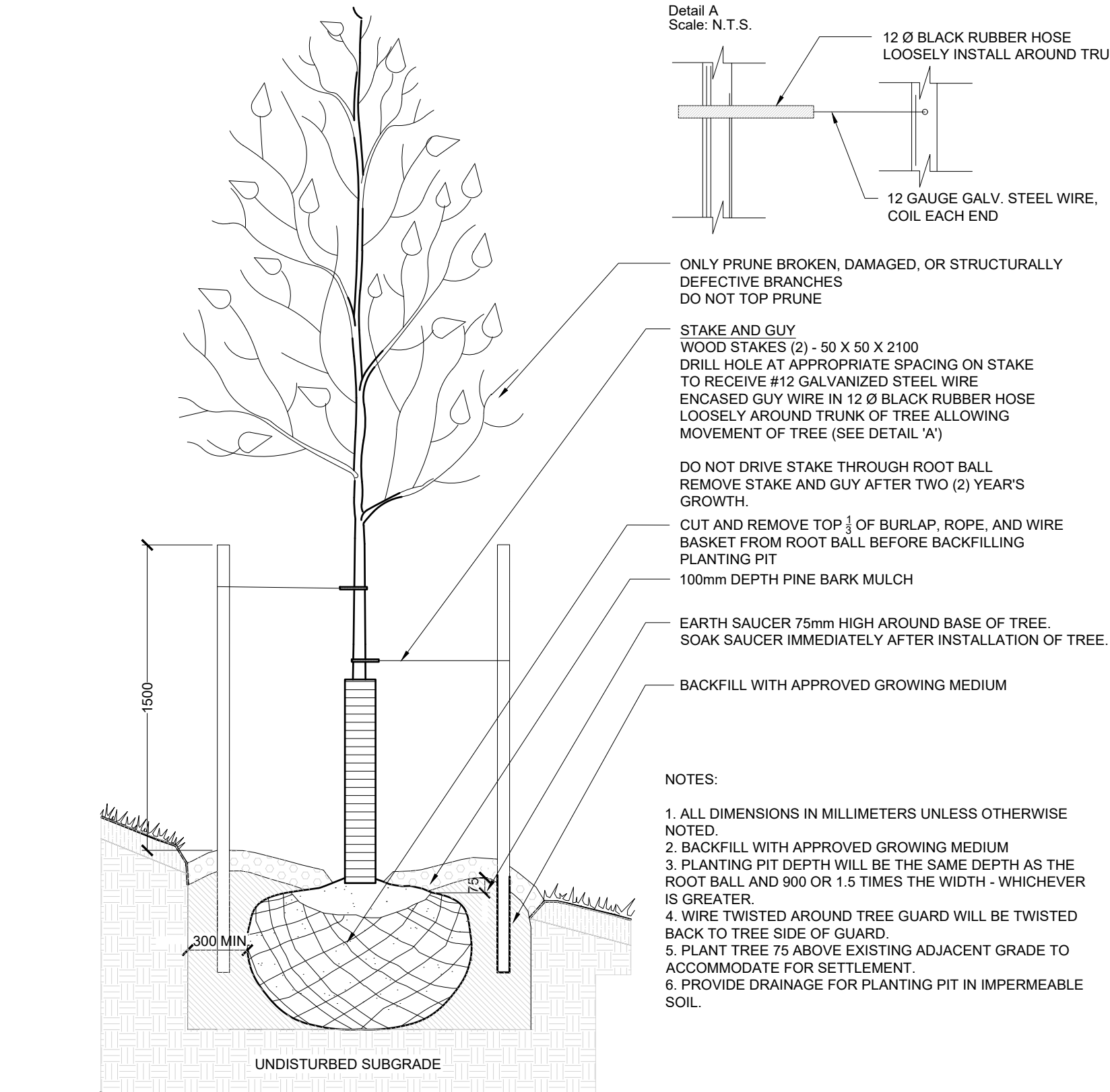
Coniferous Tree Planting On A Slope N.T.S.



NOTES

1. GROWING MEDIUM MIX: 4 PARTS TOPSOIL, 1 PART COMPOST, 1 PART SHREDDED PEAT & APPLICATION OF HIGH PHOSPHOROUS FERTILIZER (0-20-0)
2. PLANT MATERIAL SHALL BE THOROUGHLY WATERED AT TIME OF PLANTING.
3. PLANT MATERIAL SHALL BE SET PLUMB IN THE MIDDLE OF THE PIT.
4. TREE SHALL BEAR SAME RELATION OR SLIGHTLY HIGHER TO FINISHED GRADE AS ORIGINALLY GROWN.
5. PLANT STOCK SHALL BE COVERED WHILE IN TRANSIT. ROOTS SHOULD BE KEPT MOIST UNTIL PLANTED. TREES TO BE TREATED WITH ANTI-DESICANT.
6. DIMENSIONS ARE IN MILLIMETERS UNLESS OTHERWISE NOTED.
7. STAKING IS TO OCCUR ONLY AT THE DIRECTION OF THE LANDSCAPE ARCHITECT.
8. 100MM HIGH SAUCER EXCEPT WHEN PLANTING IN BED.

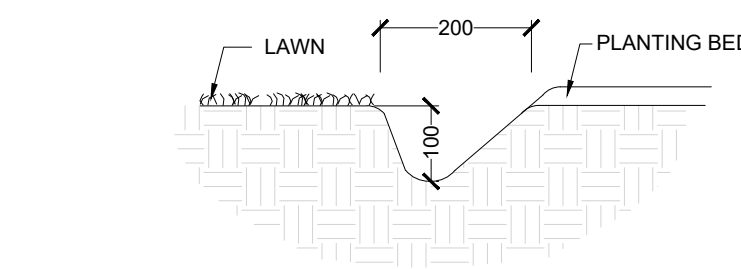
CONIFEROUS TREE PLANTING - UP TO 2.5M HEIGHT (B.B/W.B) N.T.S.



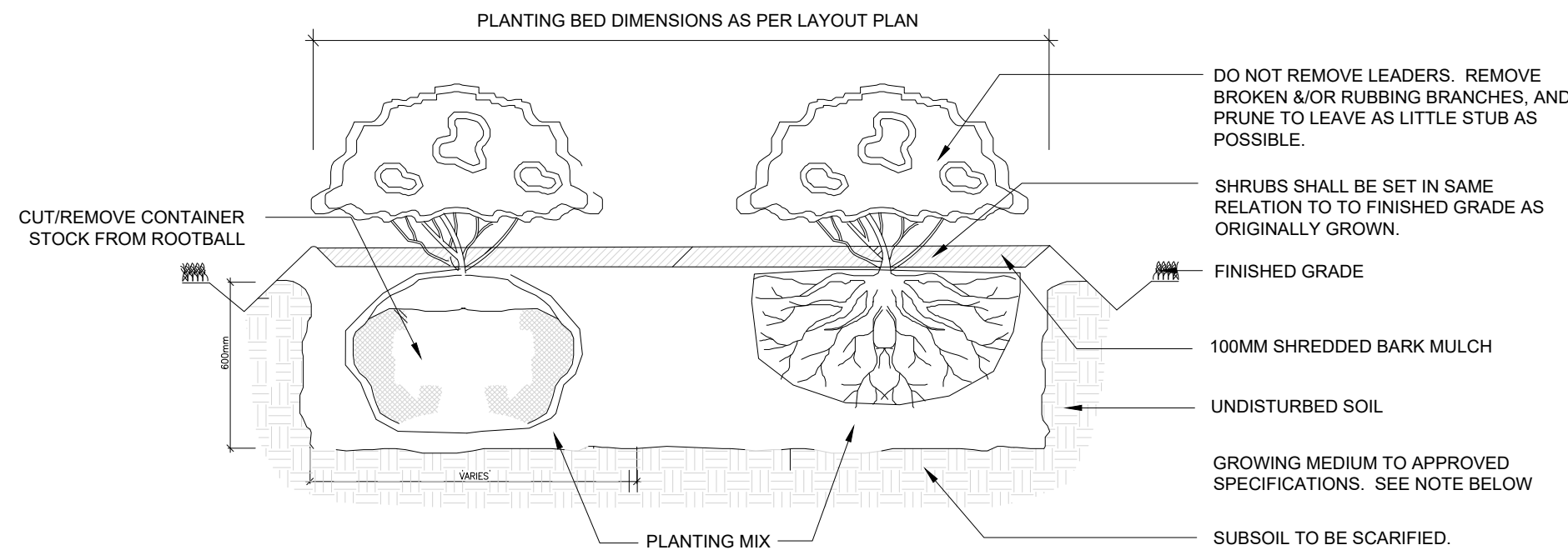
NOTES:

1. ALL DIMENSIONS IN MILLIMETERS UNLESS OTHERWISE NOTED.
2. BACKFILL WITH APPROVED GROWING MEDIUM
3. PLANTING PIT DEPTH WILL BE THE SAME DEPTH AS THE ROOT BALL AND 900 OR 1.5 TIMES THE WIDTH - WHICHEVER IS GREATER.
4. WIRE TWISTED AROUND TREE GUARD WILL BE TWISTED BACK TO TREE SIDE OF GUARD.
5. PLANT TREE 75 ABOVE EXISTING ADJACENT GRADE TO ACCOMMODATE FOR SETTLEMENT.
6. PROVIDE DRAINAGE FOR PLANTING PIT IN IMPERMEABLE SOIL.

Deciduous Tree Planting On A Slope N.T.S.



TYPICAL PLANTING BED EDGE SCALE 1:10



NOTES

1. GROWING MEDIUM MIX: 4 PARTS TOPSOIL, 1 PART COMPOST, 1 PART SHREDDED PEAT & APPLICATION OF HIGH PHOSPHOROUS FERTILIZER (0-20-0)
2. PLANT MATERIAL SHALL BE THOROUGHLY WATERED AT TIME OF PLANTING.
3. PLANT MATERIAL SHALL BE SET PLUMB IN THE MIDDLE OF THE PIT.
4. TREE SHALL BEAR SAME RELATION OR SLIGHTLY HIGHER TO FINISHED GRADE AS ORIGINALLY GROWN.
5. PLANT STOCK SHALL BE COVERED WHILE IN TRANSIT. ROOTS SHOULD BE KEPT MOIST UNTIL PLANTED. TREES TO BE TREATED WITH ANTI-DESICANT.
6. DIMENSIONS ARE IN MILLIMETERS UNLESS OTHERWISE NOTED.
7. STAKING IS TO OCCUR ONLY AT THE DIRECTION OF THE LANDSCAPE ARCHITECT.
8. 100MM HIGH SAUCER EXCEPT WHEN PLANTING IN BED.

Shrub Planting Detail N.T.S.

LANDSCAPE DETAILS

LINDSAY RETIREMENT HOME
37 ADELAIDE STREET N, LINDSAY

ISSUED FOR SITE PLAN
APPROVAL, NOT FOR
CONSTRUCTION.



DATE	ISSUE	BY
08DEC19	Issued for REVIEW/COORDINATION	RE
19DEC19	Issued for SPA	RE
30JUL20	Re-Issued for SPA	RE

DATE	REVISIONS	BY

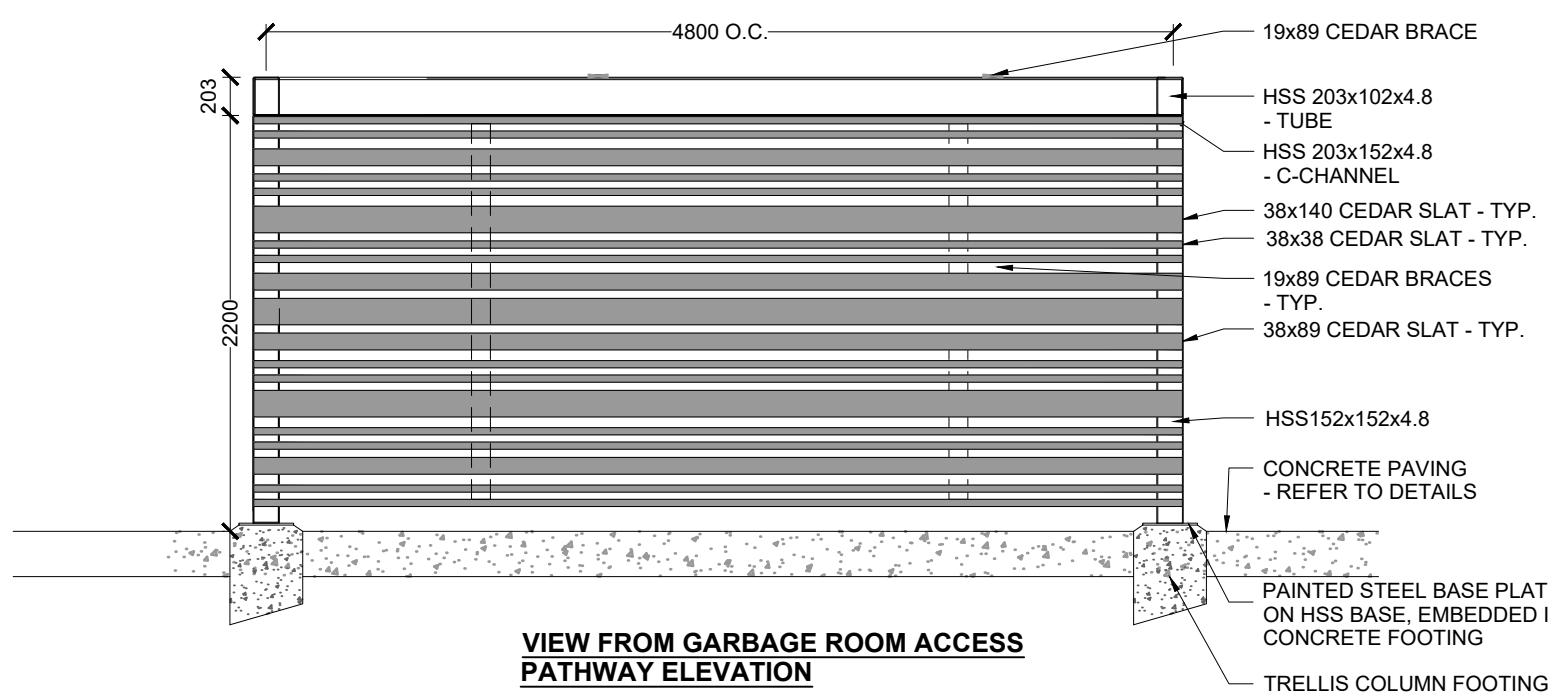
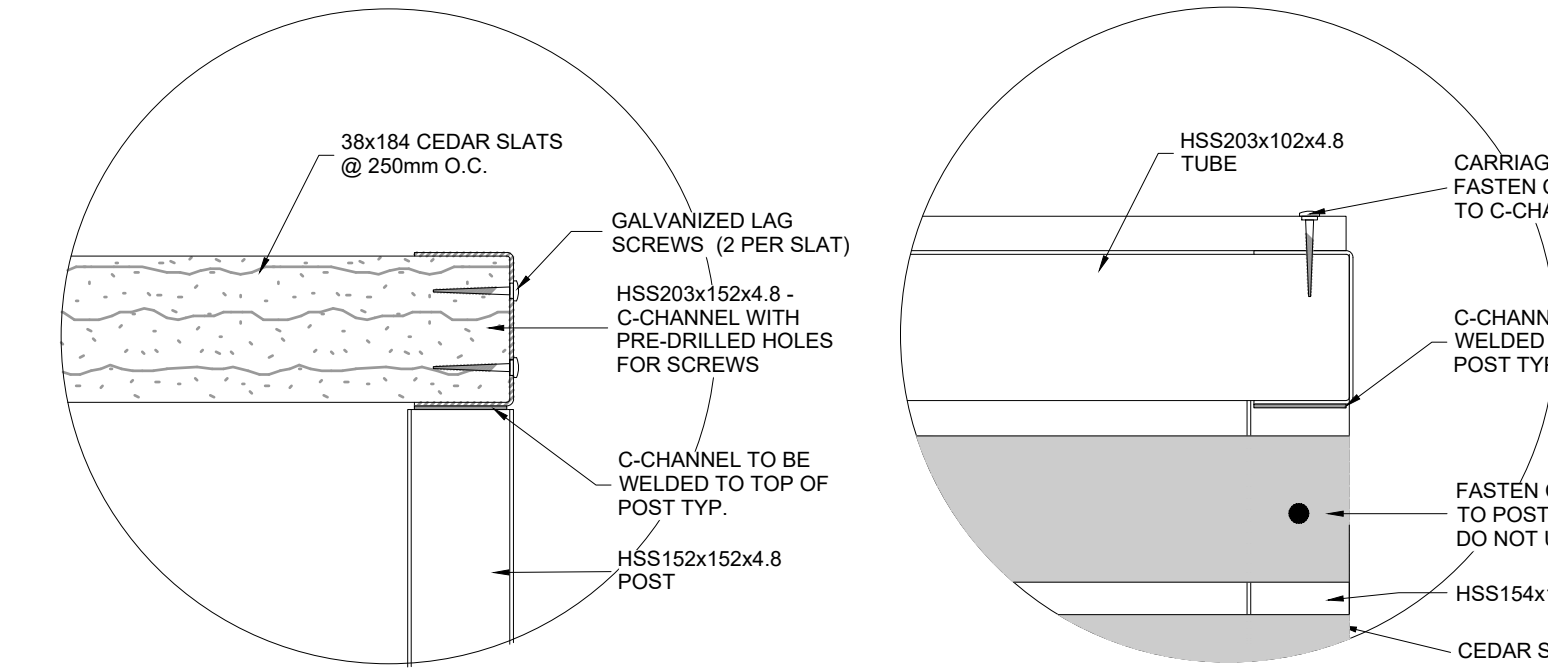


Date: December 2019
Scale: As Noted

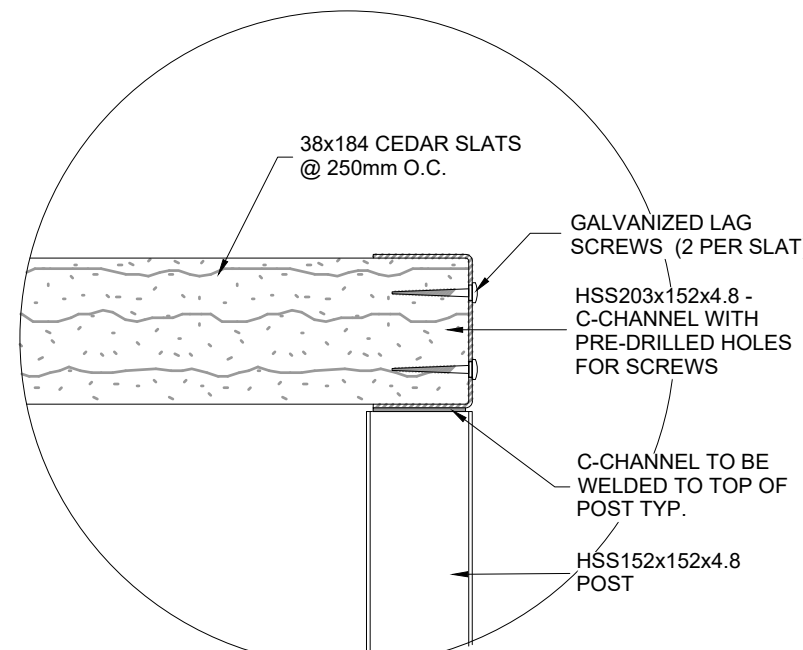
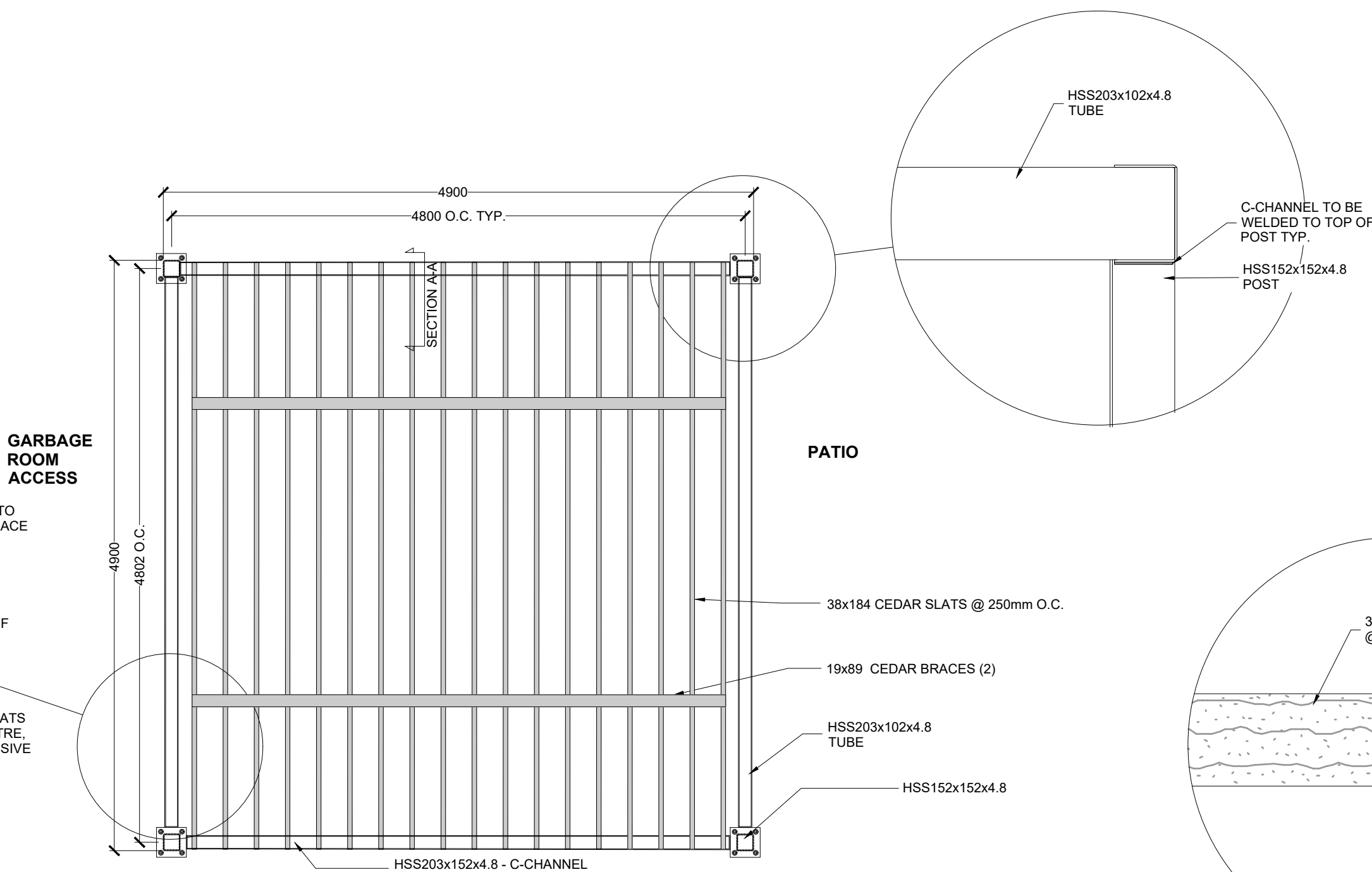
Drawn By: RE
Project No.: 19261

L2.0

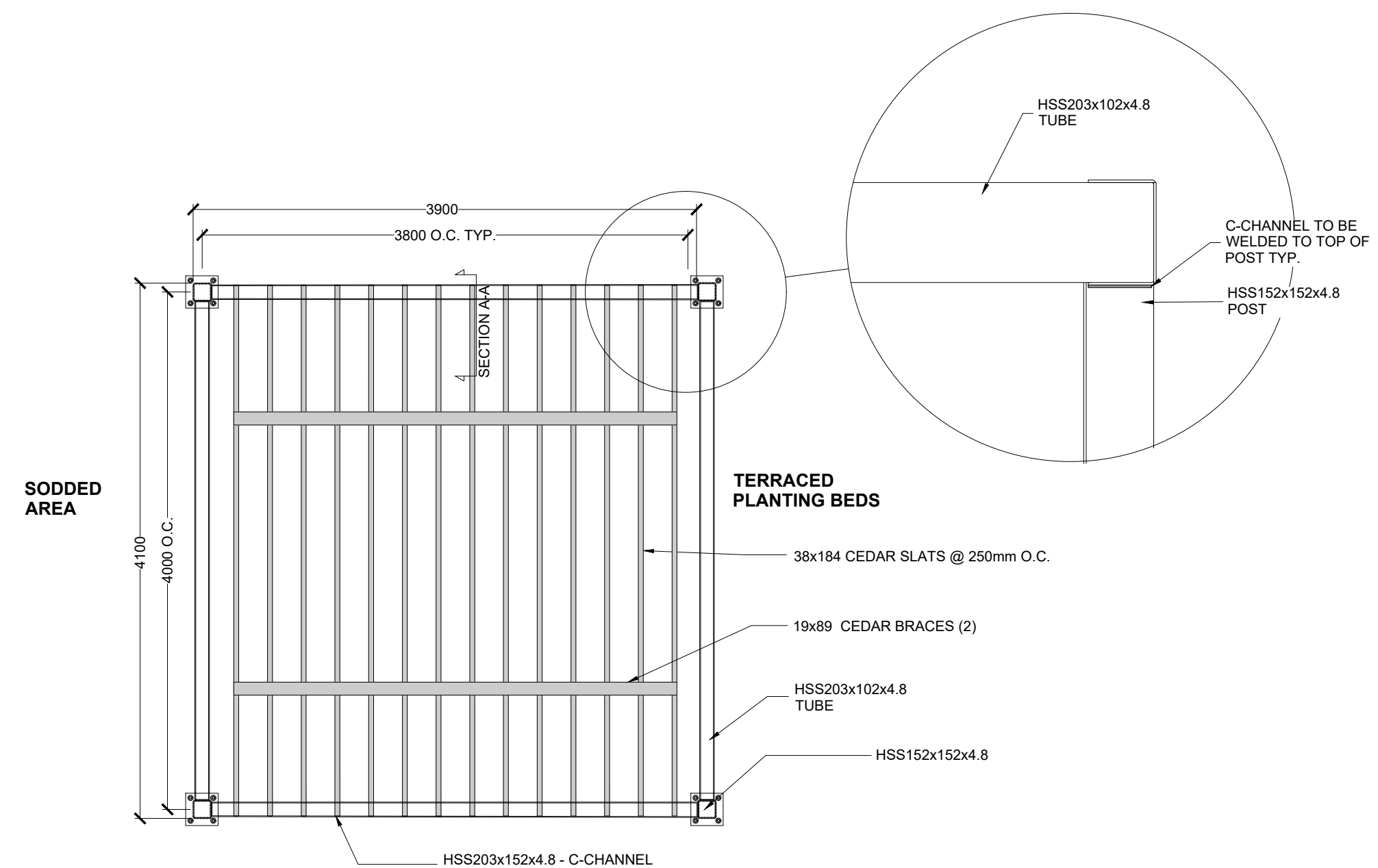
-
- 38x184 CEDAR SLATS
@ 250mm O.C.
- GALVANIZED LAG
SCREWS (2 PER SLAT)
- HSS203x152x4.8 -
C-CHANNEL WITH
PRE-DRILLED HOLES
FOR SCREWS
- C-CHANNEL TO BE
WELDED TO TOP OF
POST TYP.
- HSS152x152x4.8
POST
- HSS203
TUBE



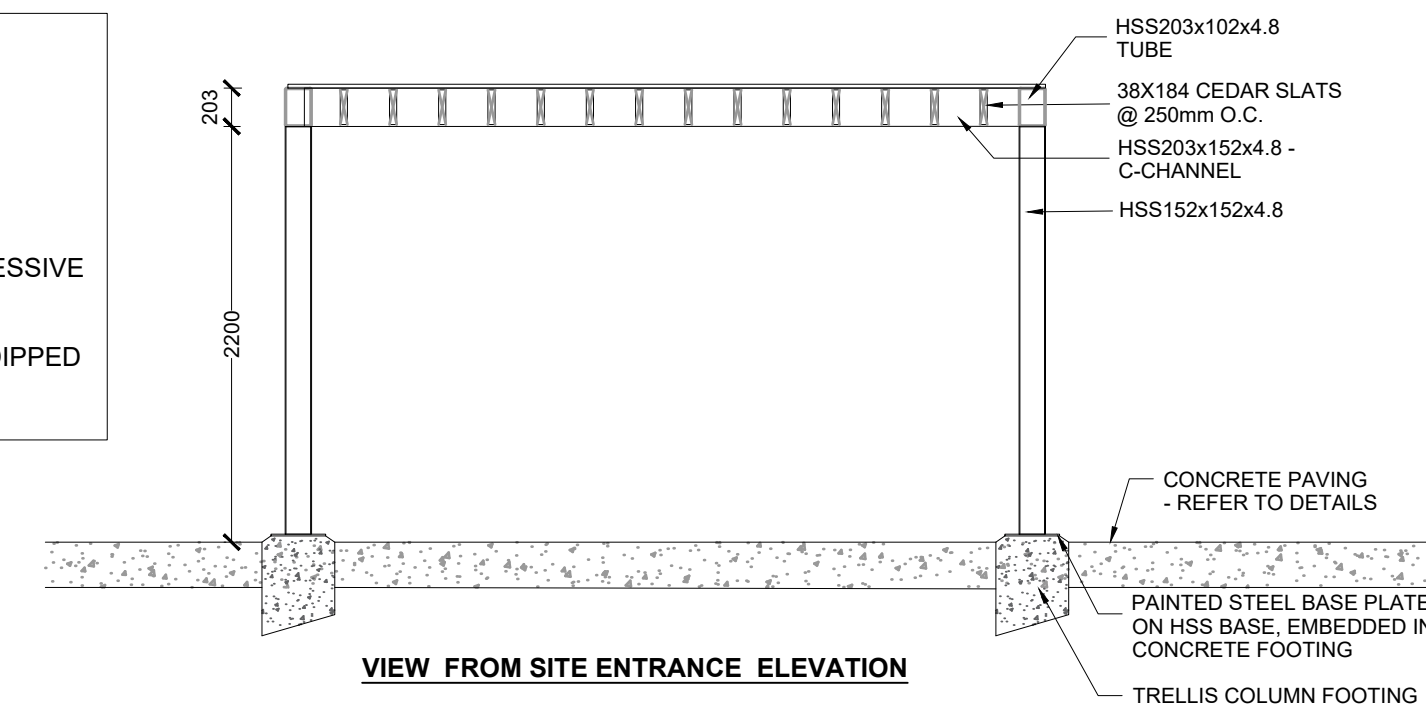
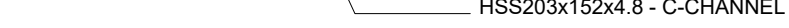
TRELLIS COLUMN FOOTING



- NOTES:
1. SEE LANDSCAPE PLAN FOR PERGOLA LOCATION.
 2. NOT FOR CONSTRUCTION. STAMPED ENGINEERED SHOP DRAWINGS ARE REQUIRED FOR CLIENT AND LANDSCAPE ARCHITECT APPROVAL PRIOR TO CONSTRUCTION.
 3. ALL WOOD TO BE NO.1 CLEAR CEDAR AND FREE OF EXCESSIVE CHIPS, CRACKS, WARPS OR KNOTS.
 4. ALL HARDWARE AND STEEL TUBE/CHANNEL TO BE HOT DIPPED GALVANIZED.



50mm O.C

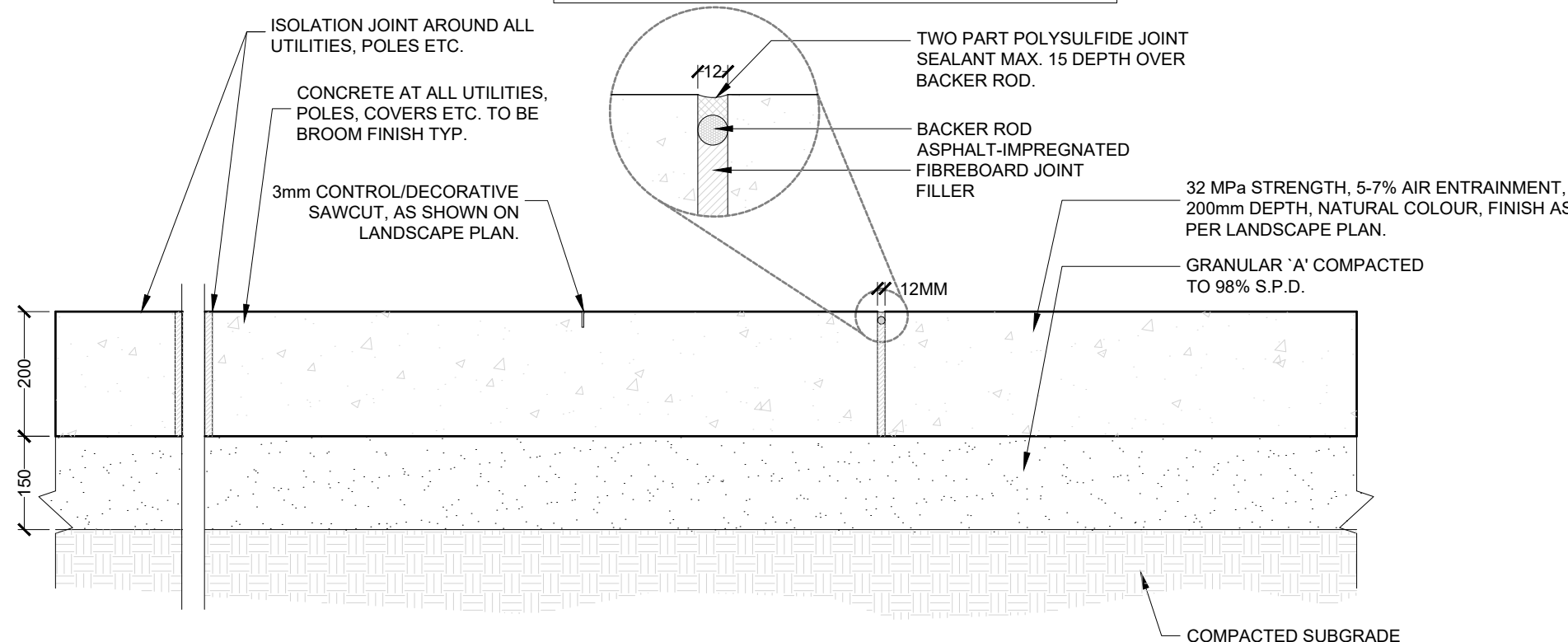


CONCRETE FOOTING
TRELLIS COLUMN FOOTING

- 1 FRONT PATIO - METAL/WOOD PERGOLA
1:40

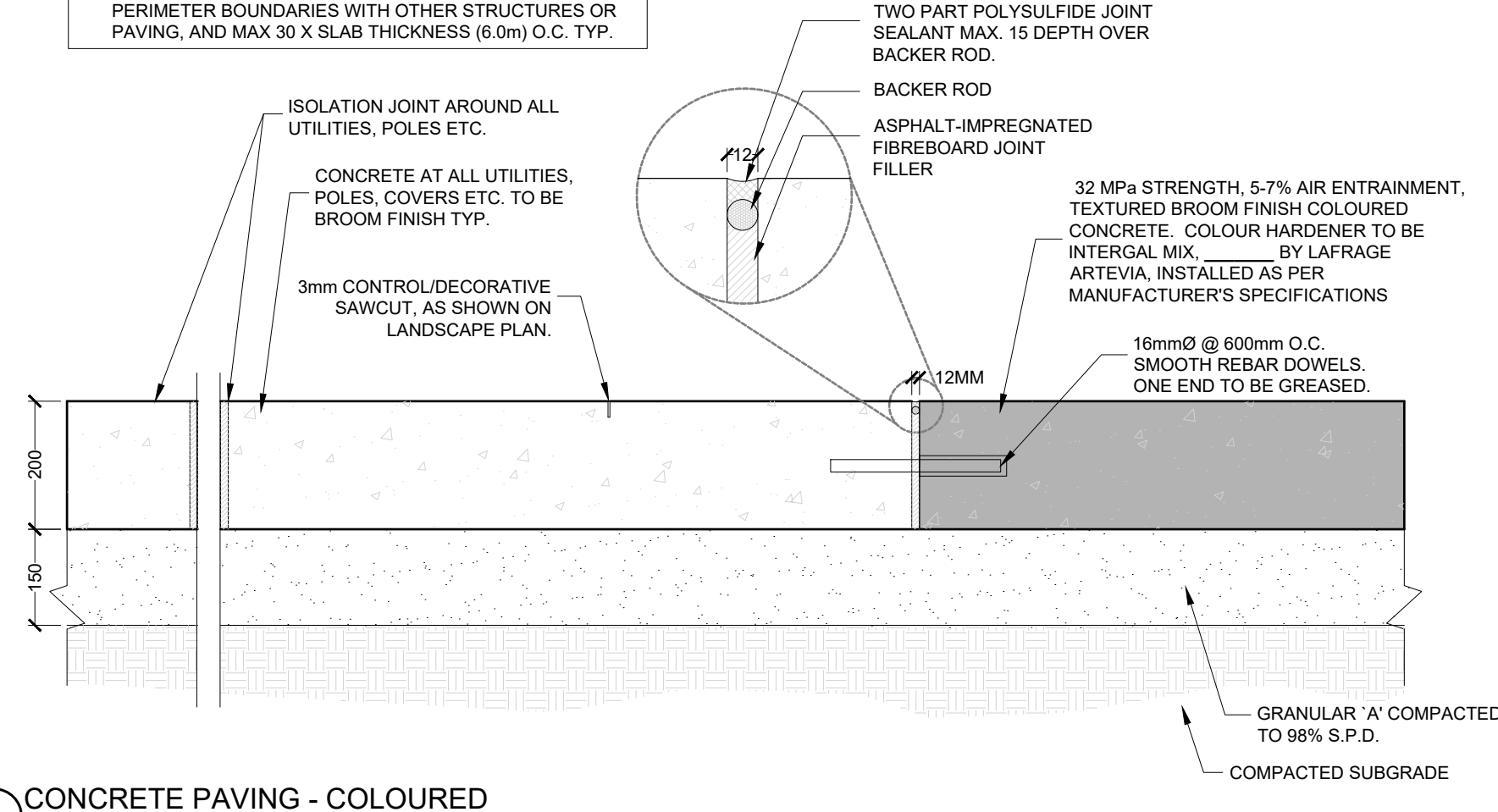
- 2 COURTYARD - METAL/WOOD PERGOLA
1:40

- NOTES:
1. EXPANSION JOINT - AS SHOWN OR AT ALL COLD JOINTS OR PERIMETER BOUNDARIES WITH OTHER STRUCTURES OR PAVING, AND MAX 30 X SLAB THICKNESS (6.0m) O.C. TYP.
 2. JOINTING BETWEEN CONCRETE PANELS TO BE SAWCUT.
 3. CONCRETE TO BE NATURAL COLOUR WITH MEDIUM BROOM FINISH OR HEAVY SANDBLAST FINISH AS PER LANDSCAPE PLAN.



3 CONCRETE PAVING - MEDIUM BROOM OR SANDBLAST FINISH
Scale 1:10

- NOTES:**
1. EXPANSION JOINT - AS SHOWN OR AT ALL COLD JOINTS OR PERIMETER BOUNDARIES WITH OTHER STRUCTURES OR PAVING, AND MAX 30 X SLAB THICKNESS (6.0m) O.C. TYP.



4 CONCRETE PAVING - COLOURED
Scale 1:10

LANDSCAPE DETAILS

LINDSAY RETIREMENT HOME
37 ADELAIDE STREET N, LINDSAY

ISSUED FOR SITE PLAN
APPROVAL, NOT FOR
CONSTRUCTION.



DATE	ISSUE	BY
06DEC19	Issued for REVIEW/COORDINATION	RE
19DEC19	Issued for SPA	RE
30JUL20	Re-Issued for SPA	RE

[illegible]

201-72 Victoria Street South
Kitchener, Ontario N2G 4Y9
T 519 599 8883

162 Locke Street South, Suite 20
Hamilton, Ontario L8P 4A9
T 905 572 7477

www.gspgroup.com

Date: December 2019	Drawn By: RE
Scale: As Noted	Project No.: 15

21

2.2