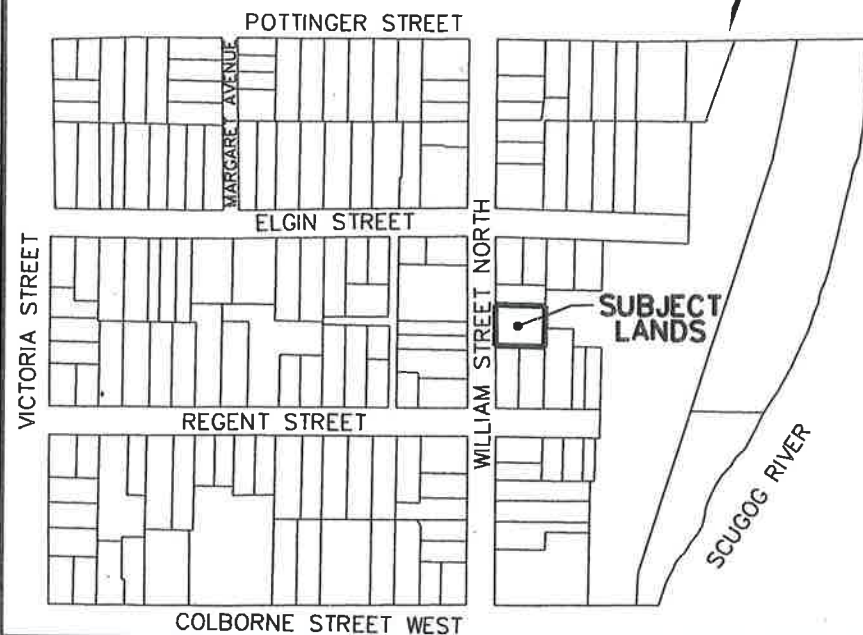
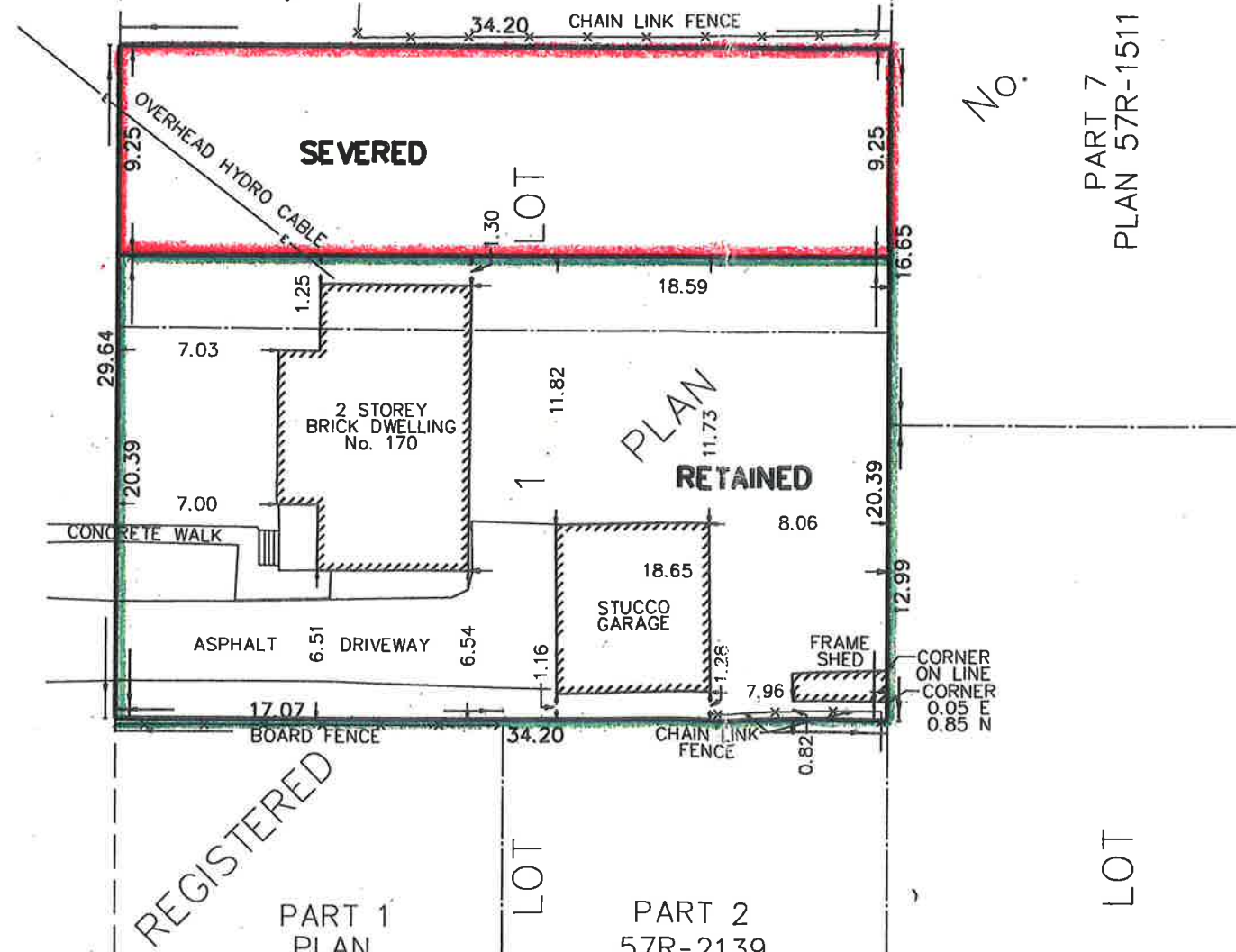


KEY MAP

NOT TO SCALE



WILLIAM STREET NORTH



SKETCH FOR SEVERANCE

No. 170 WILLIAM STREET NORTH TOWN OF LINDSAY CITY OF KAWARTHA LAKES

SCALE 1 : 300



© COPYRIGHT 2019

METRIC DISTANCES SHOWN ON THIS PLAN ARE IN METRES AND
CAN BE CONVERTED TO FEET BY DIVIDING BY 0.3048.

SUBJECT LANDS

PART OF LOT 1 AND 2, BLOCK J
REGISTERED PLAN No. 1
TOWN OF LINDSAY
BEING PIN 63216-0037(LT)

TOTAL AREA = 1283.57 sq. m.

SEVERED

AREA = 316.13 sq. m.

RETAINED

AREA = 697.44 sq. m.

CURRENT ZONING:

RESIDENTIAL THREE (R3) ZONE

CAUTION:

THIS PLAN IS NOT A PLAN OF SURVEY AND SHALL NOT BE USED
EXCEPT FOR THE PURPOSE INDICATED IN THE TITLE BLOCK.

RECEIVED
OCT 20 2020
City of Kawartha Lakes
Development Services
Planning Division



COE FISHER CAMERON
LAND SURVEYORS

A Division of J.D. Barnes Limited
3 COMMERCE PLACE, UNIT 201, LINDSAY, ON K9V 0N5
T: (705) 324-4152 F: (705) 324-8406 www.jdbarnes.com

SURVEYING
MAPPING
GIS

GR	DRAWN
GGH	CHECKED
DATED:	12/17/2019
Ref. No.	19-17-236-00