

# **Planning Advisory Committee – Proposed Cannabis Production and Processing Regulations**

March 10, 2021



# Proposed Cannabis Regulations

- Affected Zoning By-laws
- Definitions
  - New
  - Amended
- Applicable Zones
- Zone Requirements
- Policy Analysis
- Consultation
- Conclusion

# Affected Zoning By-laws

- 18 Zoning By-laws

- Lindsay
- Carden
- Dalton
- Eldon
- Emily
- Fenelon
- Laxton, Digby, Longford
- Manvers
- Mariposa
- Ops
- Somerville
- Verulam
- Bexley
- Bobcaygeon
- Fenelon Falls
- Omemee
- Sturgeon Point
- Woodville

# New Definitions

- A. **Air Filtration Control** shall mean the functional use of industrial grade multi-stage carbon filtration systems or similar technology, to reduce and/or treat the emission of pollen, dust and odours expelled from a facility and size accordingly in comparison to the facility it serves as designed by a qualified person.
- B. **Cannabis** shall mean a genus of flowering plants in the family Cannabaceae. Synonyms include but are not limited to marijuana, and marihuana. This definition does not include the industrial or agricultural production of hemp (a source of foodstuffs [hemp milk, hemp seed, hemp oil], fiber and biofuels).
- C. **Cannabis Production and Processing** means lands, buildings or structures used for producing, processing, testing, destroying, packaging and /or shipping of cannabis authorized by an issued license or registration by the federal Minister of Health, pursuant to the Access to Cannabis for Medical Purposes Regulations, SOR/2016-230, to the Controlled Drugs and Substances Act, SC 1996, c 19, as amended from time to time, or any successors thereto.
- D. **Sensitive Land Use** means buildings, amenity areas or outdoor spaces where routine or normal activities occurring at reasonably expected times would experience one or more adverse effects from contaminant discharges generated by a nearby major facility. Sensitive land uses may be part of the built or natural environment. Examples include: residences, day care centres, and educational and health centres.

# Amended Definitions

- “...but does not include cannabis production or processing facilities.”
  - Agricultural Use
  - Agricultural Produce Storage Facility
  - Agriculturally Related Commercial Use
  - Agricultural Produce Warehouse
  - Farm
  - Farm, Specialized
  - Industry – Heavy, Light and Medium
  - Manufacturing, Processing, Assembling or Fabricating Plant

# Applicable Zones

- Rural General
- Agricultural
- Industrial

## Zone Requirements

### With Air Filtration Control

- Lot coverage, frontage, setbacks of applicable zone.
- 70m separation from Sensitive Land Uses.
- Site plan agreement.

### Without Air Filtration Control

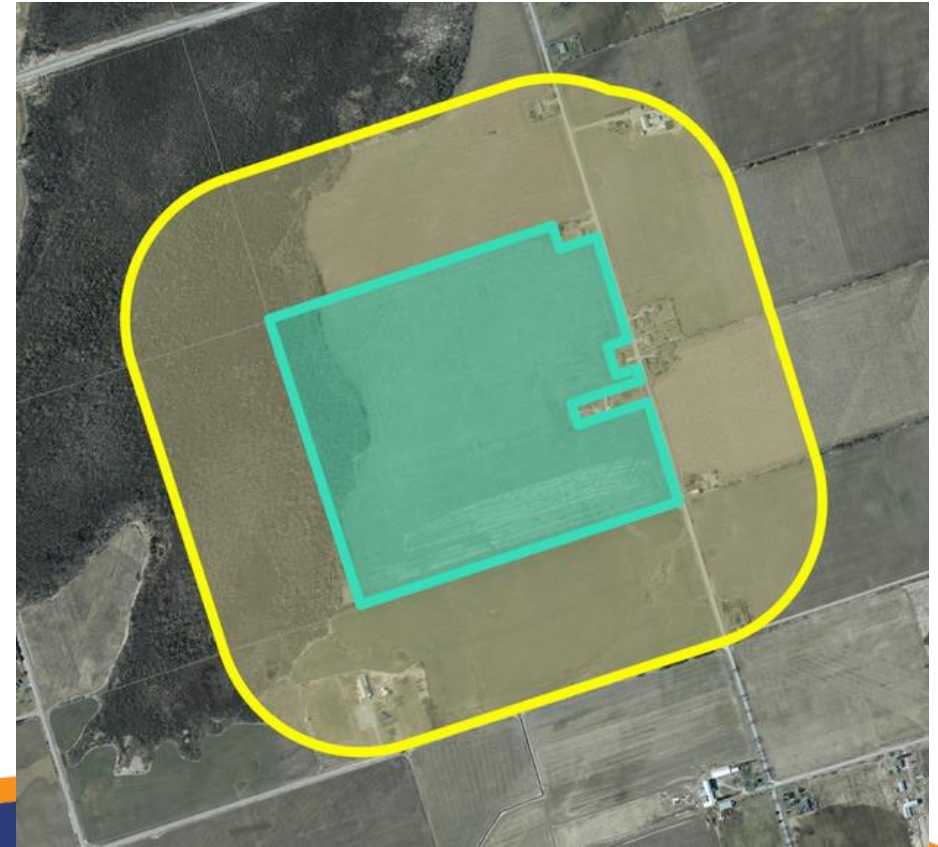
- Lot coverage, frontage, setbacks of applicable zone.
- 300m separation from Sensitive Land Uses.
- Site plan agreement.

# Zone Requirements

With Air Filtration Control  
70m Separation



Without Air Filtration Control  
300m Separation





# Policy Analysis

- Provincial Policy Statement, 2020
- A Place to Grow: Growth Plan for the Greater Golden Horseshoe, 2019
- City of Kawartha Lakes Official Plan, 2012
- Zoning By-laws

# Consultation and Comments

- Notice was published in the Peterborough This Week and Kawartha Lakes This Week
- Agricultural Development Advisory Committee
- Two residents have submitted comments writing
- Ontario Ministry of Agriculture, Food and Rural Affairs
- Ontario Federation of Agriculture

# Conclusion and Recommendation

Staff recommends that this report for the proposed Cannabis Cultivation and Processing Regulations Zoning By-law amendment be referred back to staff for further review and consideration until comments from the public meeting and agencies have been reviewed.

Questions?



