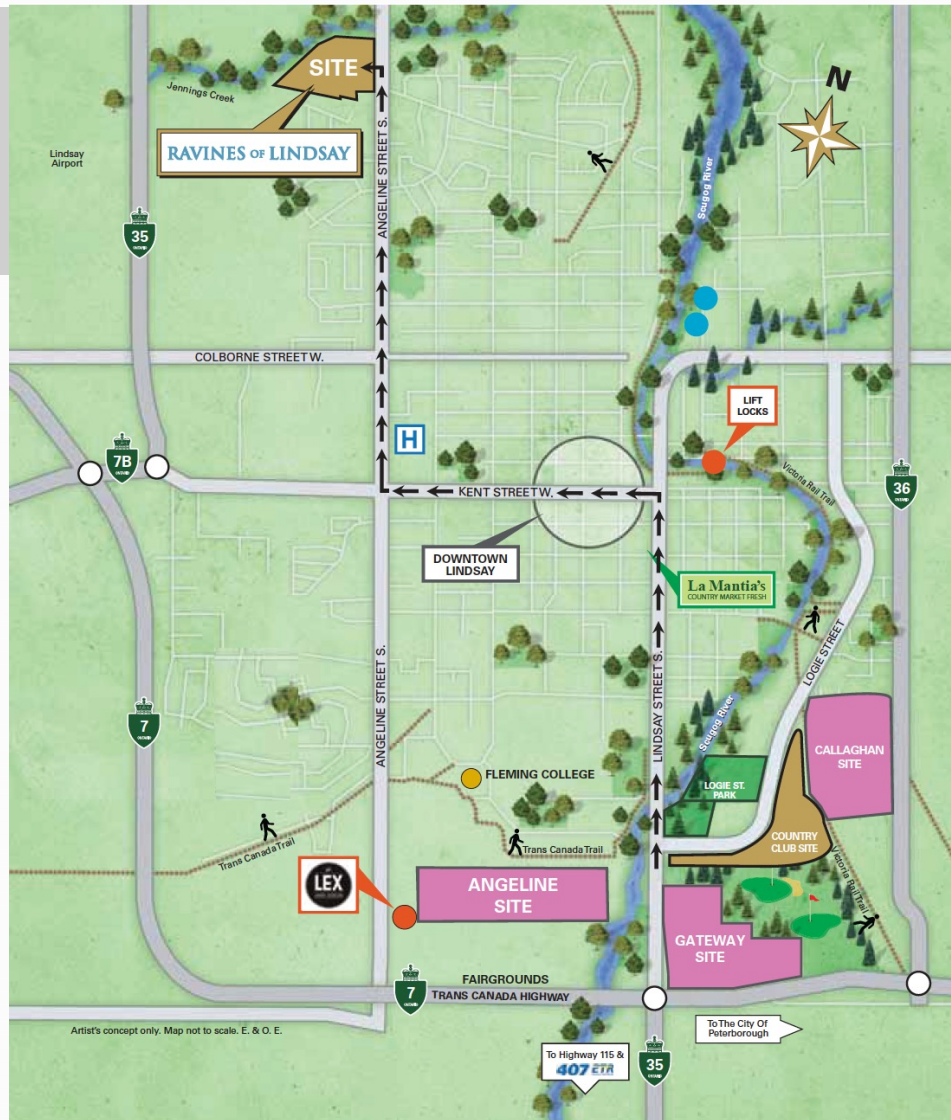




Gateway Community MZO Request

Bromont Homes Active in Lindsay



Bromont Homes

Country Club Subdivision
Range of Housing Types

Singles, townhouses



Bromont Homes

Low-rise and Apartments

Commit to providing mix
Of housing on future sites

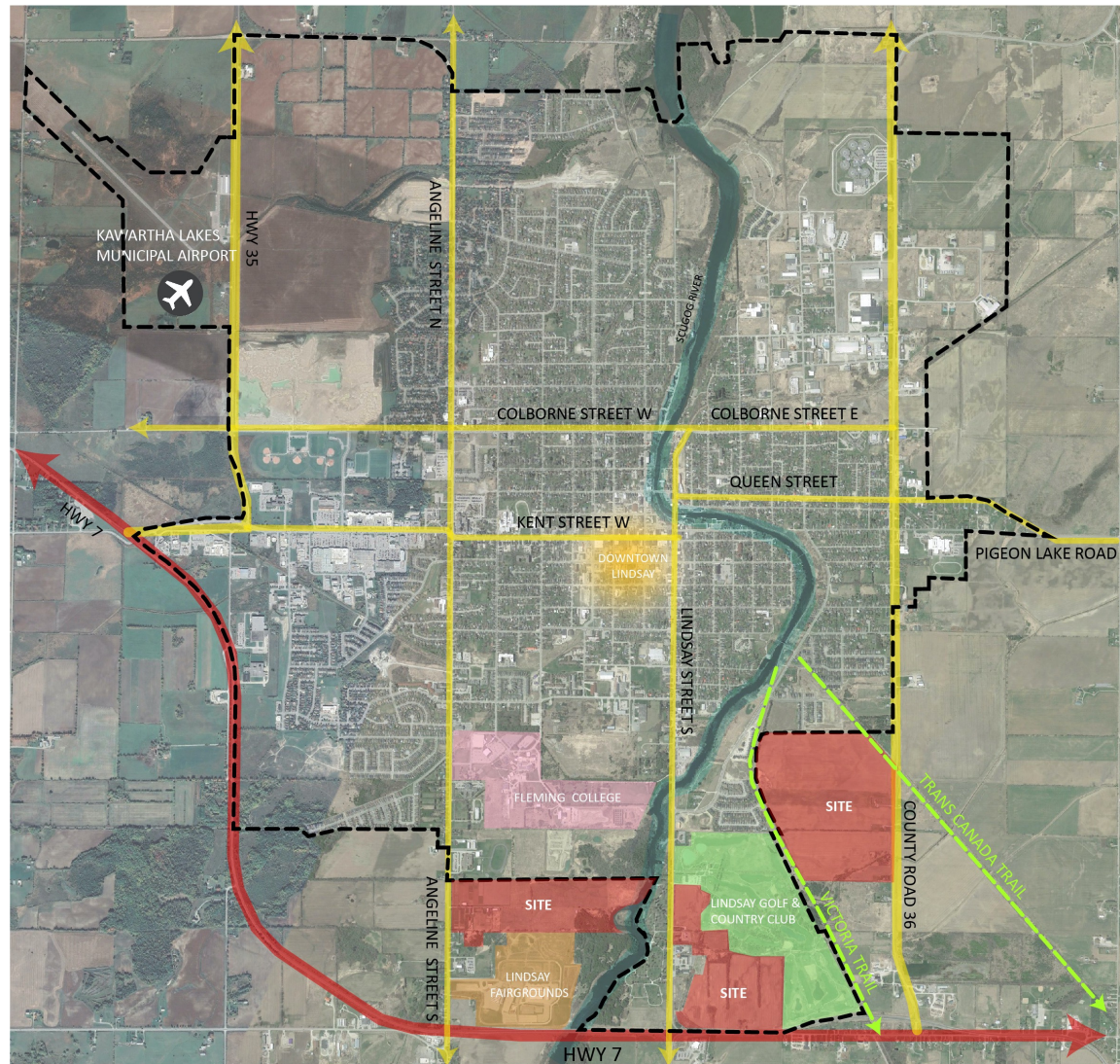


Subject Lands

- The proposed MZO sites are a natural extension of the urban fabric

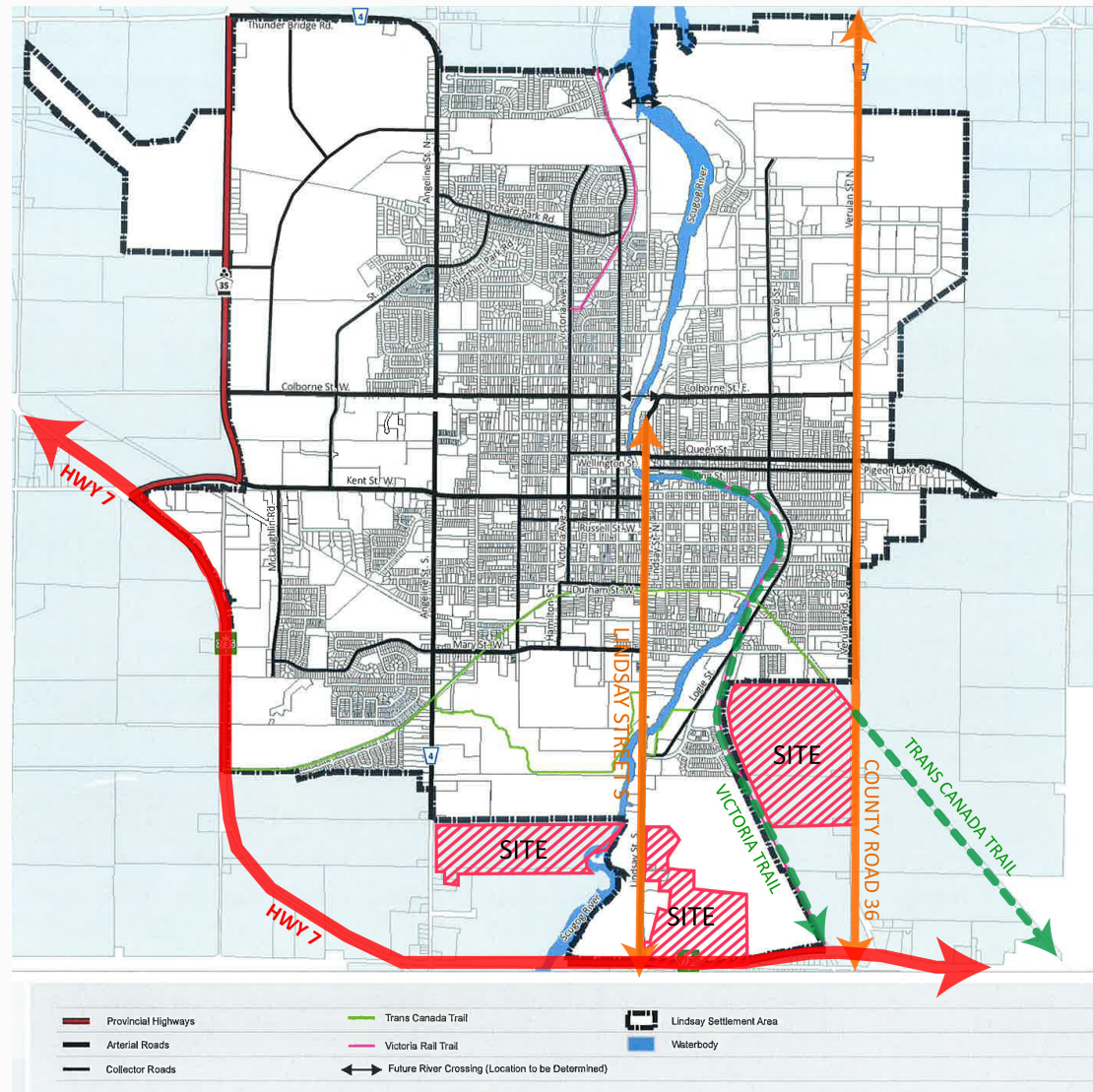
Area Context:

- Existing Trails
- Lindsay golf club
- Fairgrounds
- Fleming College



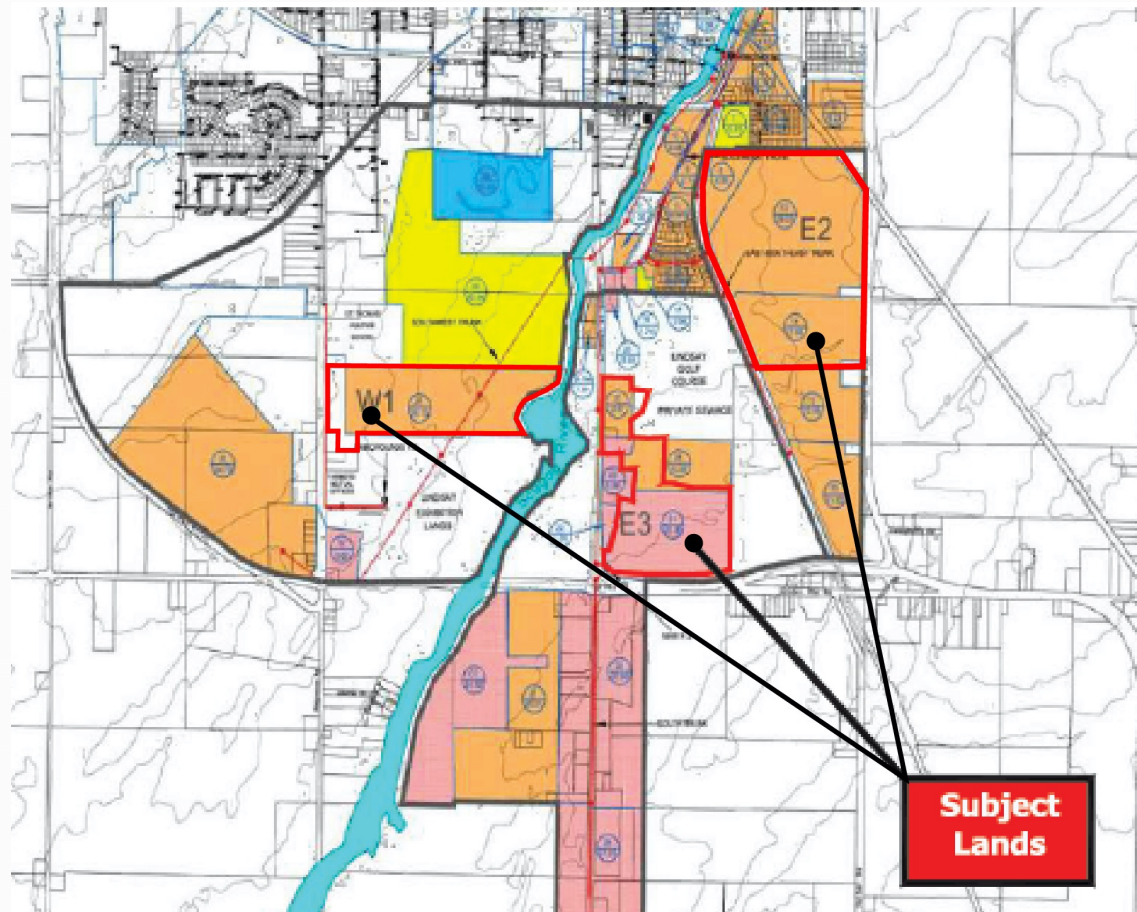
Accessible Location

- Hwy 7
- Highway 36
- Lindsay Street
- Angeline Street
- Victoria Trail
- Trans Canada Trail

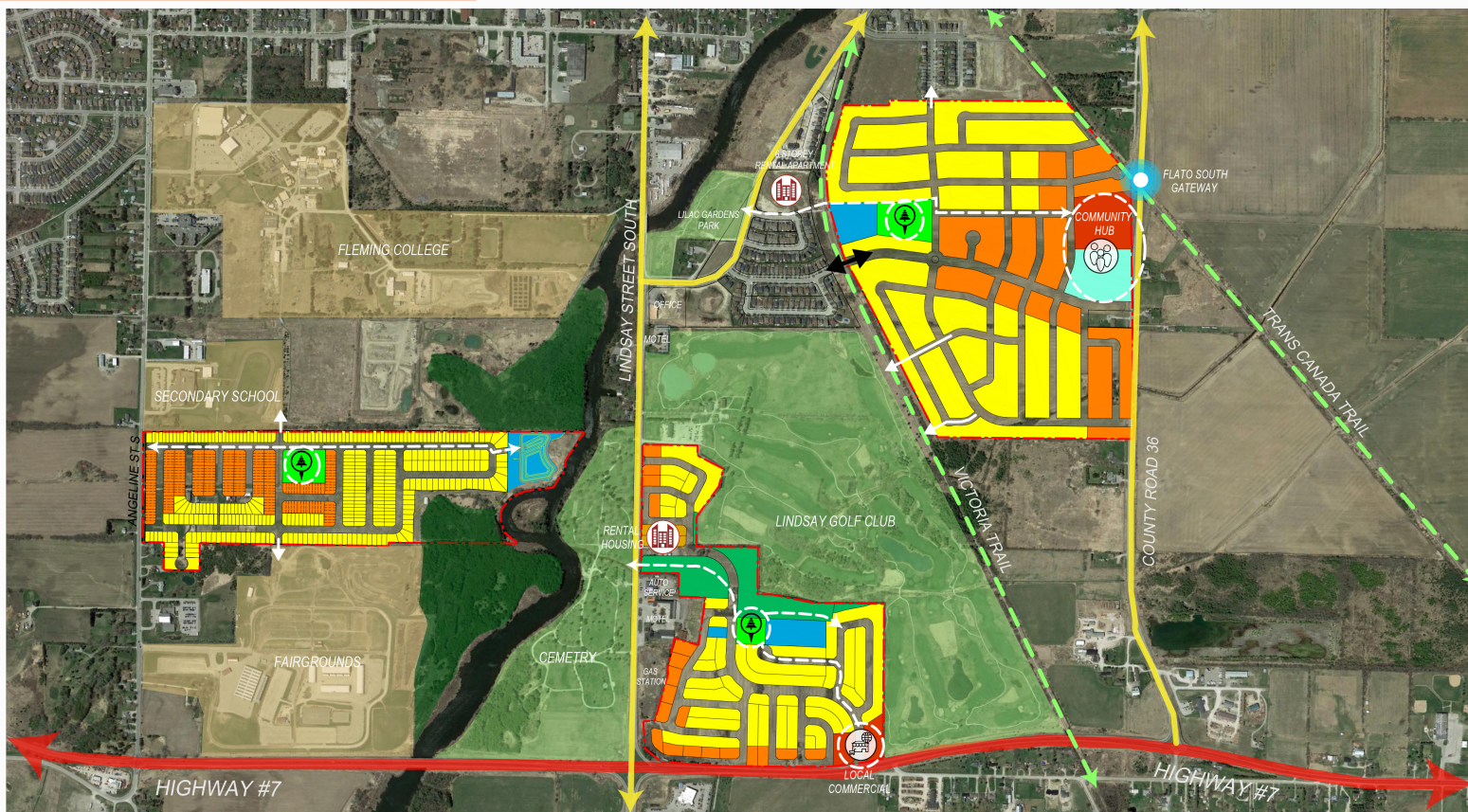


Serviceable

- DC Study Contemplates Servicing
- Existing infrastructure oversized to accommodate servicing the lands



Concept Plan




LEGEND

- Low Density Residential
- Medium Density Residential
- Apartments
- Commercial
- Institutional
- Storm Water Management pond
- Parks
- Open Space
- MZO boundary



Complete Community Commitments

- 2,200 Units
 - 10% affordable housing, including new rental
 - New Parks, Community Facilities, Local Commercial
 - Will participate in City's Growth Management Strategy
 - Will enter into development agreements with the City to secure commitments
 - Provide for mix of apartments, townhouse and detached housing
 - Provide for connections to existing trails
 - Protect existing natural features, such as Sucker Creek, acceptable to Kawartha Conservation and Curve Lake First Nation
- 
- 