



**THE CORPORATION OF THE
CITY OF KAWARTHA LAKES**
12 Peel Street P.O. Box 9000
LINDSAY, ON K9V 5R8
Phone: 705-324-9411, Ext. 1156
Fax: 705-324-2982

MEMO

Date: October 2, 2017
To: Drainage Board
From: Mike Farquhar, Supervisor Technical Services – Engineering & Corporate Assets
Re: Petition for Municipal Drainage
Webster petition
CC: Juan Rojas Director of Engineering and Corporate Assets
Paul Herlihey, Municipal Drain Superintendent.

Recommendation:

RECOMMEND THAT the Drainage Board receives the memorandum from the Supervisor of Technical Services- Engineering and Corporate Assets dated September 19, 2017, for information in response to the petition for drainage works by owners of:

Concession 5, Part Lot 11, Geographic Township of Eldon

From Alan Webster (Victor Webster Farms Ltd.)

THAT the Drainage Board recommends to Council for consideration this petition for a Municipal Drain as prescribed under the Ontario Drainage Act; and

THAT Staff pursue with the petitioners concurrently an option for a mutual drainage agreement as per the City's Agricultural Tile Discharge to Roadside Ditches Policy.



**THE CORPORATION OF THE
CITY OF KAWARTHA LAKES**
12 Peel Street P.O. Box 9000
LINDSAY, ON K9V 5R8
Phone: 705-324-9411, Ext. 1156
Fax: 705-324-2982

Background:

The subject area/ land is bounded by Prospect road to the West, Sandringham road to the East and Glenarm road (CKL 8) to the South (refer to Appendix A). There are no existing Municipal Drains within the vicinity. The area of the land identified as Concession 5 Part lot 11 is approximately 196 acres in size.

The property is within the Simcoe County Conservation Authority jurisdiction as defined under the Ontario Conservation Act and has an identified watercourse on the property (see appendix B). The grade of the lands from the middle of the property contours to the south east.

On September 11, 2017 the City of Kawartha Lakes Clerks department received a petition for Drainage works within the subject area (Appendix C).

Subsequent meetings were held with the applicants representative and City staff on site to review options for a mutual drain. However this was not a viable option because this would have involved alterations to the City's infrastructure that would have increased the amount of water the downstream property owner is currently receiving, and they had already expressed to the applicant that they did not wish to receive any more water. The applicant had pursued and received a permit from the Simcoe County Conservation Authority to tile the lands he could to the existing watercourse on his property, however it did not afford him an adequate out for all of his lands.

Alternatives:

As an option for required drainage the City firstly promotes the use of a Mutual agreement through the City's policy for Agricultural Tile discharge to roadside ditches prior to pursuing a petition for a Municipal drain under the Ontario Drainage Act. At this point in time the Drainage Superintendent has currently presented this option to the petitioners and explained its avenues in comparison to petitioning for a Municipal Drain under the Drainage Act. At this current time the petitioners wish to carry on with the process under the Drainage Act for the petition. Staff will leave the door open for pursuing a mutual agreement up until the prescribed time the petitioner has under the Drainage Act for removing their names and abandoning the petition.

Recommendation for appointment of a Drainage Engineer:

Currently the City has a pool of Drainage Engineers which list in the following.

Burnside Engineering
Tulloch Engineering
K-Smart Engineering
R. D. Dobbin Engineering
DM Wills Engineering.



**THE CORPORATION OF THE
CITY OF KAWARTHA LAKES**
12 Peel Street P.O. Box 9000
LINDSAY, ON K9V 5R8
Phone: 705-324-9411, Ext. 1156
Fax: 705-324-2982

Attachments:



Appendix A.pdf



Appendix B.pdf

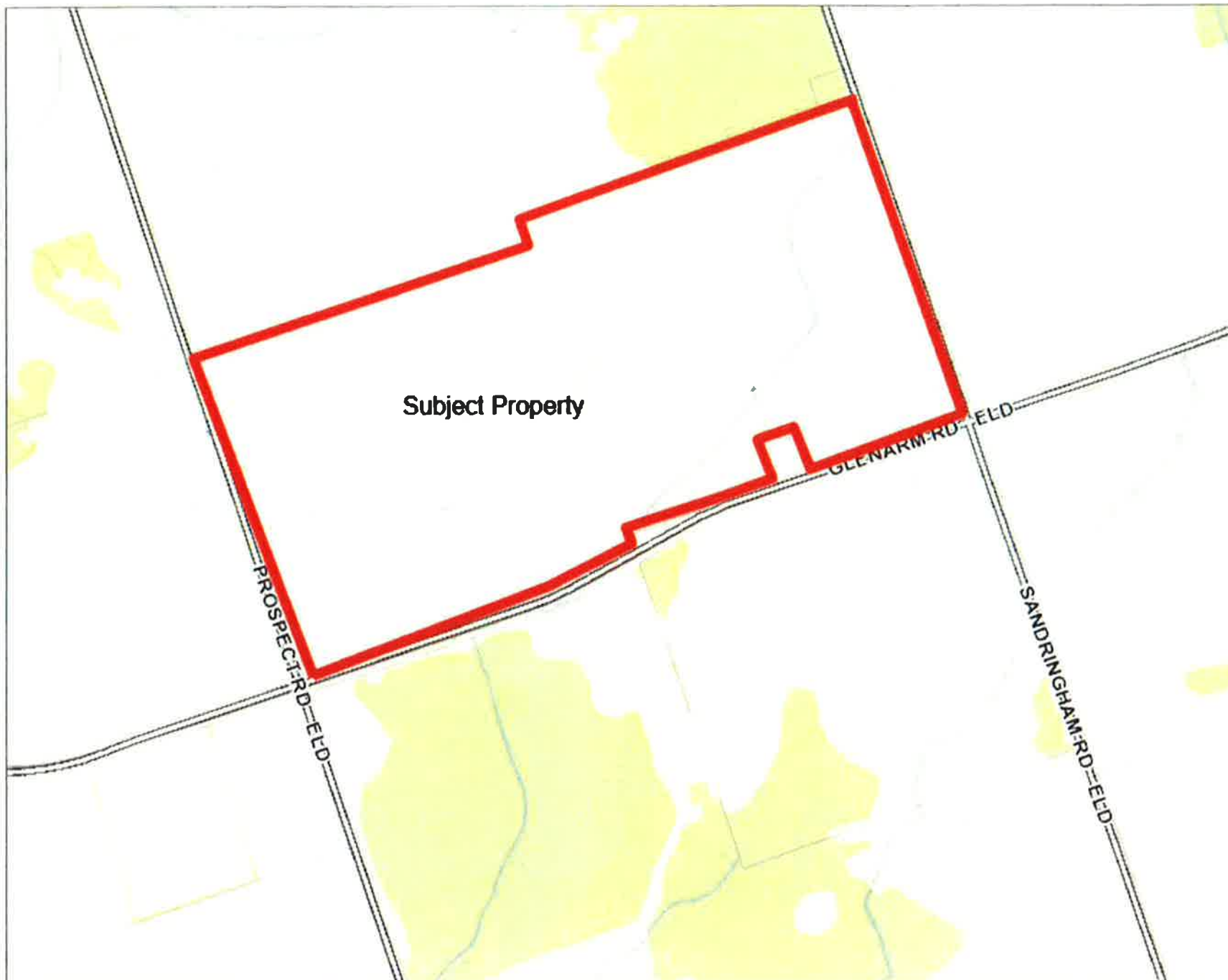


Appendix C.pdf



Petition for Drainage
Works Form 1 - Webs

Appendix A

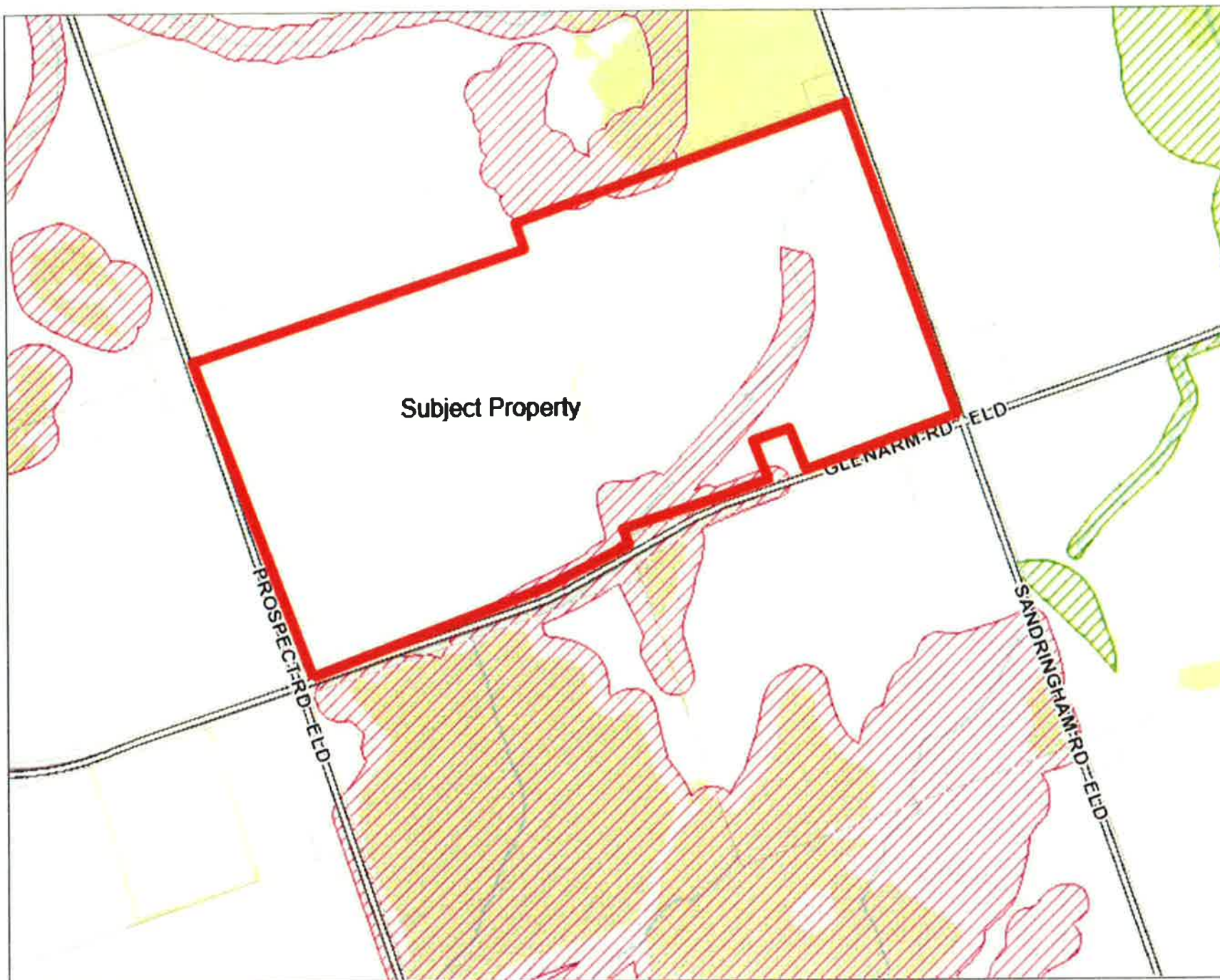


Legend

- = Road Centreline
- = Municipal Drains
- ▣ Municipal Catchment Areas
- Upper Municipalities
- Lower Tier Municipalities
- ⊙ Populated Places
- Water Labels
- Property ROLL#

Notes

Appendix B



Legend

- == Road Centreline
- Municipal Drains
- ▨ Municipal Catchment Areas
- Upper Municipalities
- Lower Tier Municipalities
- ⊙ Populated Places
- Water Labels
- Property ROLL#
- ▨ KRCA Regulated Areas
- ▨ LSRCA Regulated Areas
- ▨ ORCA Regulated Areas
- ▨ Oak Ridges Moraine

Notes

Notes

Appendix C



Legend

- == Road Centreline
- == Municipal Drains
- Municipal Catchment Areas
- Upper Municipalities
- Lower Tier Municipalities
- Populated Places
- Water Labels
- Property ROLL#
- KRCA Regulated Areas
- LSRCA Regulated Areas
- ORCA Regulated Areas
- Oak Ridges Moraine

Notes