

Oakwood Stop Signs for Uncontrolled Intersections

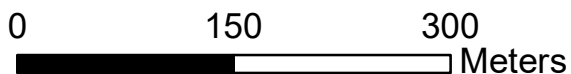


- New Stop on Uncontrolled Intersection
- New All-way Stop on Uncontrolled Intersection

Map produced by the City of Kawartha Lakes Engineering Department with data obtained under license. Reproduction without permission is prohibited.

The foregoing information is given for convenience only and it should be clearly understood that you must satisfy yourself as to whether the premises and the existing or proposed use thereof are, or would be, in conformity with all applicable by-laws and regulations of the municipality.

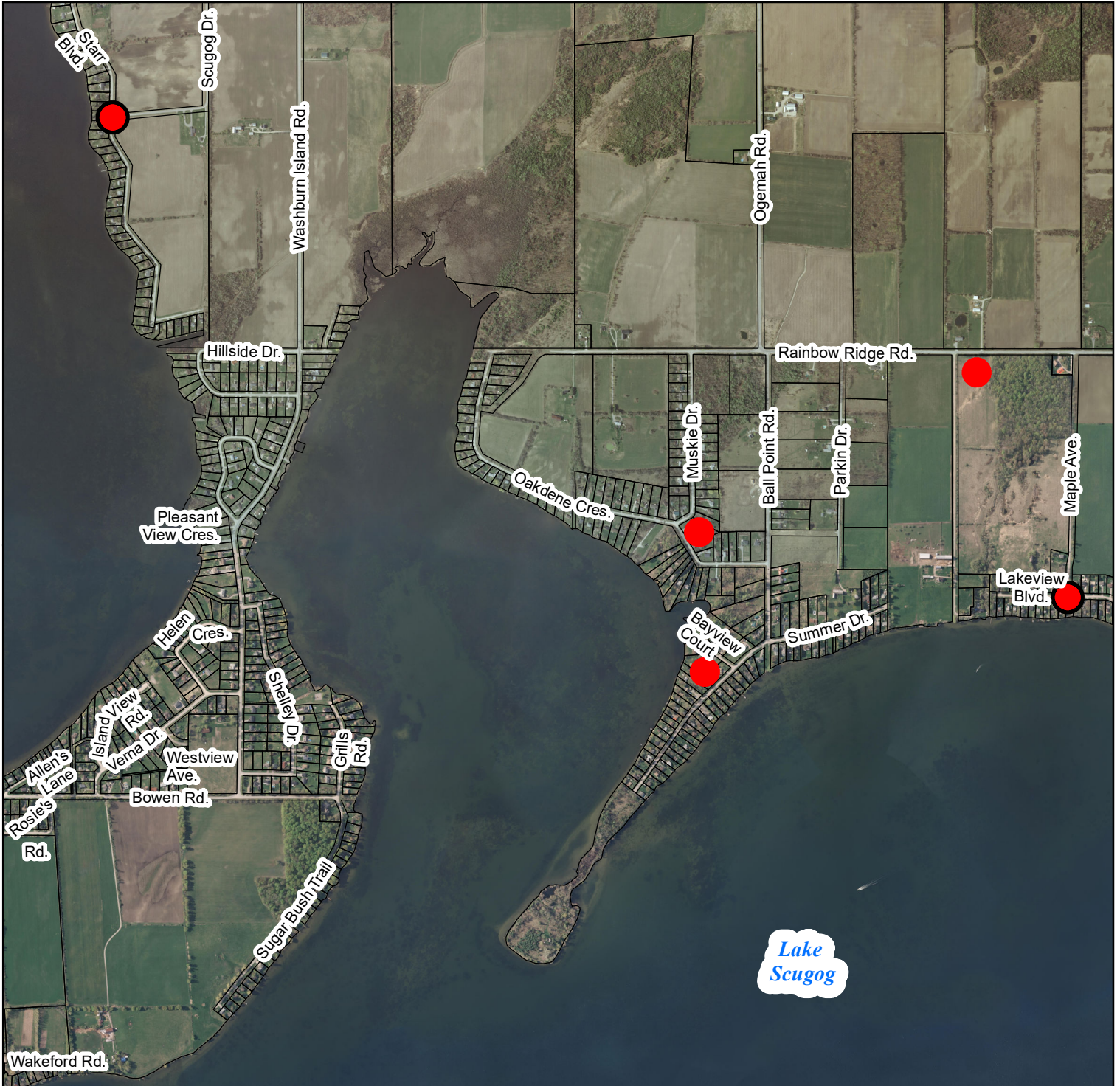
All distances and locations are approximate and are not of survey quality. This map is illustrative only. Do not rely on it as being a precise indicator of privately or publicly owned land, routes, locations or features, nor as a guide to navigate.



Projection: Transverse Mercator
Coordinate System: NAD83, Zone 17

MNRF

Mariposa Stop Signs for Uncontrolled Intersections

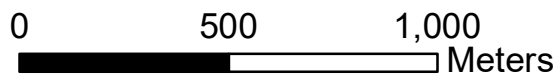


- New Stop on Uncontrolled Intersection
- New All-way Stop on Uncontrolled Intersection

Map produced by the City of Kawartha Lakes Engineering Department with data obtained under license. Reproduction without permission is prohibited.

The foregoing information is given for convenience only and it should be clearly understood that you must satisfy yourself as to whether the premises and the existing or proposed use thereof are, or would be, in conformity with all applicable by-laws and regulations of the municipality.

All distances and locations are approximate and are not of survey quality. This map is illustrative only. Do not rely on it as being a precise indicator of privately or publicly owned land, routes, locations or features, nor as a guide to navigate.



Projection: Transverse Mercator
Coordinate System: NAD83, Zone 17

Westview Dr Stop Signs for Uncontrolled Intersections

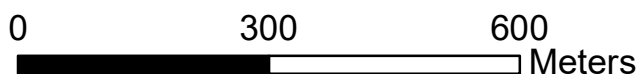


 New Stop on Uncontrolled Intersection

Map produced by the City of Kawartha Lakes Engineering Department with data obtained under license. Reproduction without permission is prohibited.

The foregoing information is given for convenience only and it should be clearly understood that you must satisfy yourself as to whether the premises and the existing or proposed use thereof are, or would be, in conformity with all applicable by-laws and regulations of the municipality.



All distances and locations are approximate and are not of survey quality. This map is illustrative only. Do not rely on it as being a precise indicator of privately or publicly owned land, routes, locations or features, nor as a guide to navigate.



Projection: Transverse Mercator
Coordinate System: NAD83, Zone 17

Gilson Point Stop Signs for Uncontrolled Intersections

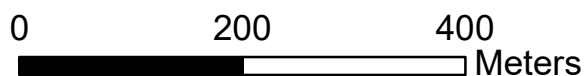


-  New Stop on Uncontrolled Intersection
-  New All-way Stop on Uncontrolled Intersection

Map produced by the City of Kawartha Lakes Engineering Department with data obtained under license. Reproduction without permission is prohibited.

The foregoing information is given for convenience only and it should be clearly understood that you must satisfy yourself as to whether the premises and the existing or proposed use thereof are, or would be, in conformity with all applicable by-laws and regulations of the municipality.


All distances and locations are approximate and are not of survey quality. This map is illustrative only. Do not rely on it as being a precise indicator of privately or publicly owned land, routes, locations or features, nor as a guide to navigate.




Projection: Transverse Mercator
Coordinate System: NAD83, Zone 17

Joan Ave Stop Signs for Uncontrolled Intersections



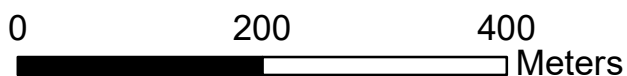
 New Stop on Uncontrolled Intersection

 New All-way Stop on Uncontrolled Intersection

Map produced by the City of Kawartha Lakes Engineering Department with data obtained under license. Reproduction without permission is prohibited.

The foregoing information is given for convenience only and it should be clearly understood that you must satisfy yourself as to whether the premises and the existing or proposed use thereof are, or would be, in conformity with all applicable by-laws and regulations of the municipality.

All distances and locations are approximate and are not of survey quality. This map is illustrative only. Do not rely on it as being a precise indicator of privately or publicly owned land, routes, locations or features, nor as a guide to navigate.



Projection: Transverse Mercator
Coordinate System: NAD83, Zone 17

Newman Rd Stop Signs for Uncontrolled Intersections



MNRF



New Stop on Uncontrolled Intersection



New All-way Stop on Uncontrolled Intersection

0

200

400

Meters

Map produced by the City of Kawartha Lakes Engineering Department with data obtained under license. Reproduction without permission is prohibited.

The foregoing information is given for convenience only and it should be clearly understood that you must satisfy yourself as to whether the premises and the existing or proposed use thereof are, or would be, in conformity with all applicable by-laws and regulations of the municipality.

All distances and locations are approximate and are not of survey quality. This map is illustrative only. Do not rely on it as being a precise indicator of privately or publicly owned land, routes, locations or features, nor as a guide to navigate.



Projection: Transverse Mercator
Coordinate System: NAD83, Zone 17