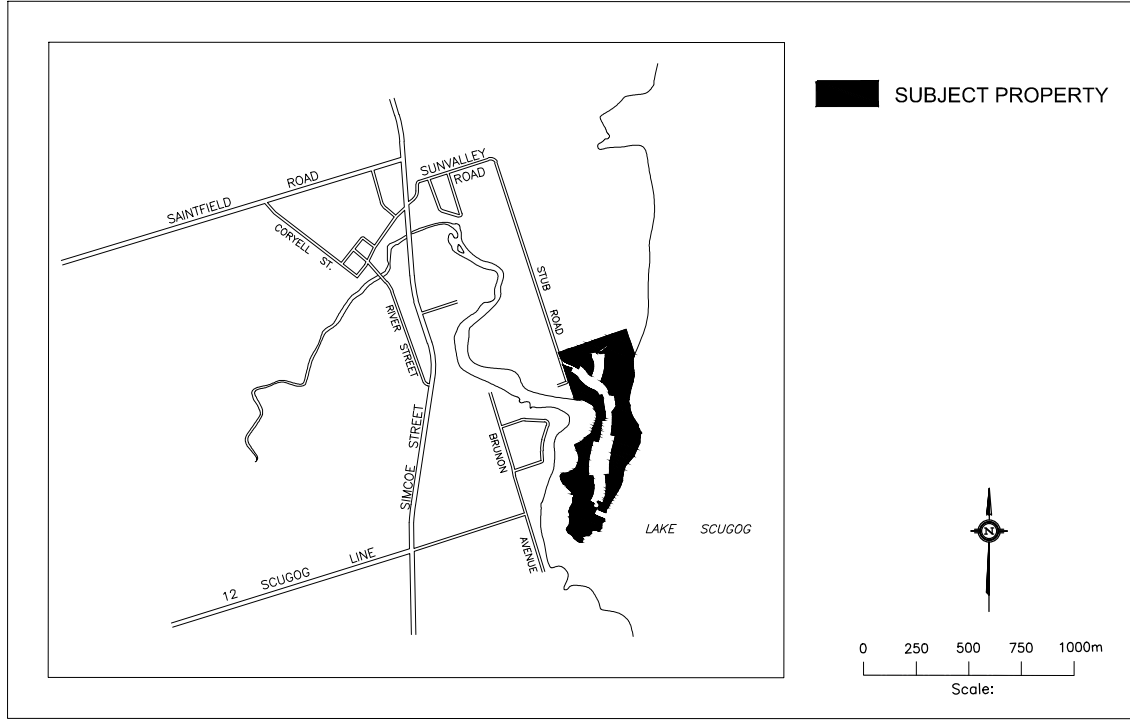


DRAFT PLAN OF SUBDIVISION XXT-XXXXXX

All of Blocks 111, 113 and 114,
Part of Blocks 107, 108 and 112,
Plan 57M-747,
City of Kawartha Lakes

Appendix E to
Report
PLAN2022-047

KEY PLAN



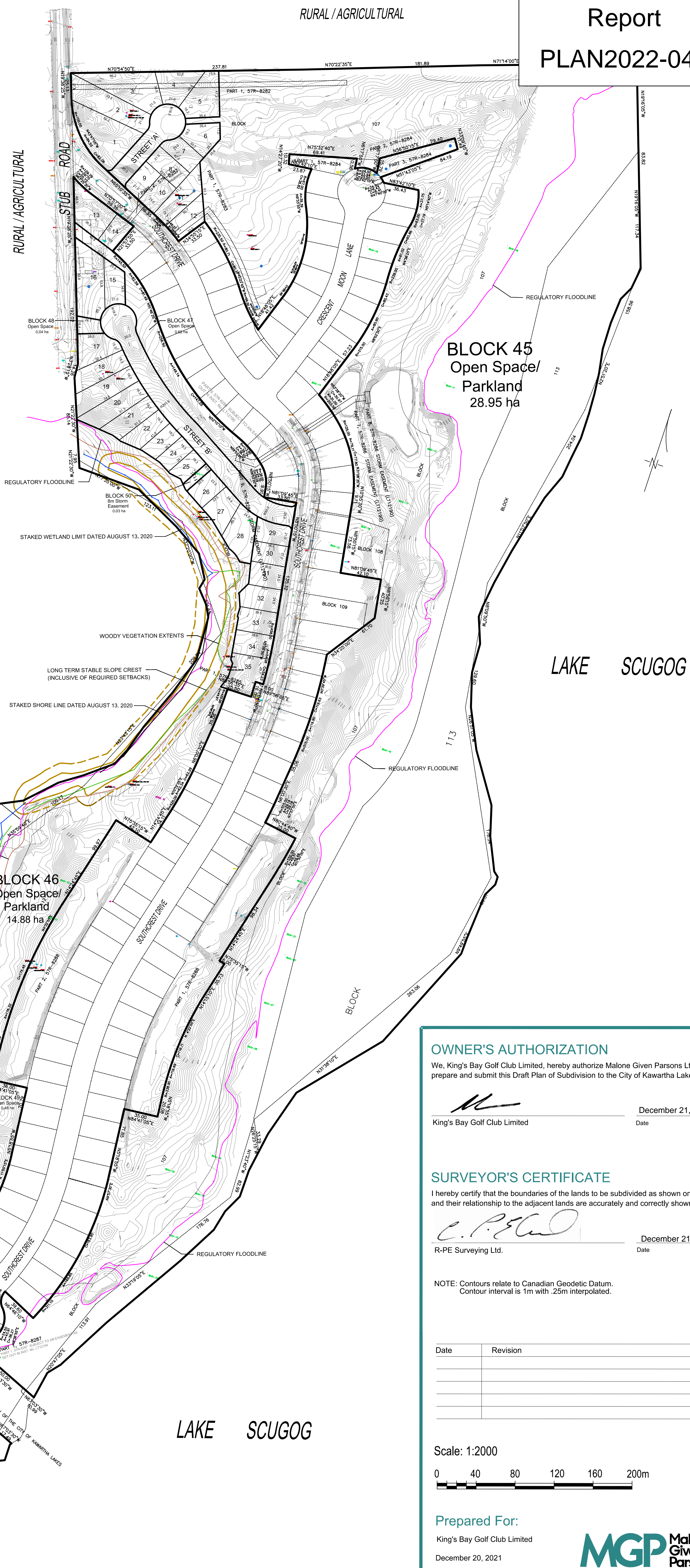
SCHEDULE OF LAND USE

| Lot/Block | Land Use | Units | Area(ha) |
|-----------|---------------------------------|-------|----------|
| 1-44 | Single Detached Residential | 44 | 5.17 |
| 45-46 | Open Space / Parkland | | 43.83 |
| 47-49 | Open Space | | 1.14 |
| 50 | 8m Storm Easement | | 0.03 |
| | Roads | | 1.51 |
| | Streets A-C @ 20.0m R.O.W. 690m | | |
| Total | | 44 | 51.68 |

ADDITIONAL INFORMATION

AS REQUIRED UNDER SECTION 51(17) OF THE PLANNING ACT, CHAPTER P.13 (R.S.O. 1990).

- (a),(e),(f),(g),(j),(l) - As shown of the Draft Plan.
- (b),(c) - As shown on the Draft and Key Plan.
- (d) - Land to be used in accordance with the Schedule of Land Use.
- (i) - Soil is sandy silt to silty sand.
- (h),(k) - Full municipal services to be provided.




OWNER'S AUTHORIZATION

We, King's Bay Golf Club Limited, hereby authorize Malone Given Parsons Ltd. to prepare and submit this Draft Plan of Subdivision to the City of Kawartha Lakes.

 December 21, 2021
King's Bay Golf Club Limited Date

SURVEYOR'S CERTIFICATE

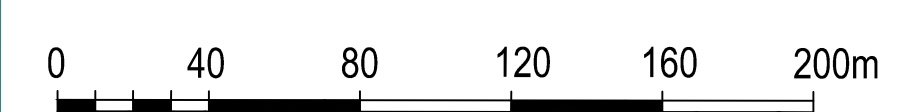
I hereby certify that the boundaries of the lands to be subdivided as shown on this Plan and their relationship to the adjacent lands are accurately and correctly shown.

 December 21, 2021
R-PE Surveying Ltd. Date

NOTE: Contours relate to Canadian Geodetic Datum.
Contour interval is 1m with .25m interpolated.

| Date | Revision | By |
|------|----------|----|
| | | |
| | | |
| | | |

Scale: 1:2000



Prepared For:

King's Bay Golf Club Limited
December 20, 2021

MGP File: 15-2448

