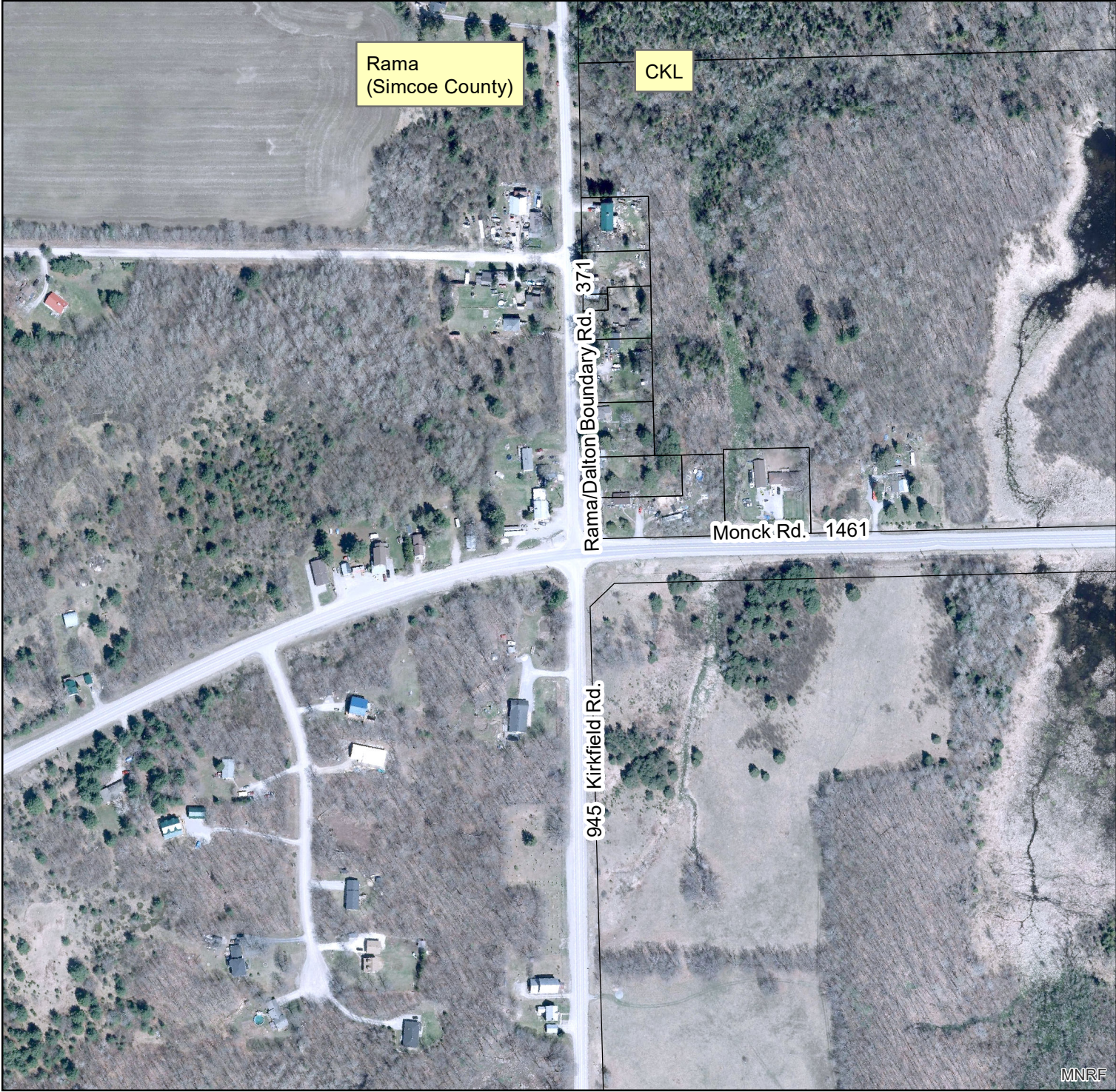


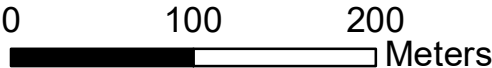
Sebright  
2021 Road Needs  
Estimated AADT



Map produced by the City of Kawartha Lakes Engineering Department with data obtained under license. Reproduction without permission is prohibited.

The foregoing information is given for convenience only and it should be clearly understood that you must satisfy yourself as to whether the premises and the existing or proposed use thereof are, or would be, in conformity with all applicable by-laws and regulations of the municipality.

All distances and locations are approximate and are not of survey quality. This map is illustrative only. Do not rely on it as being a precise indicator of privately or publicly owned land, routes, locations or features, nor as a guide to navigate.



Projection: Transverse Mercator  
Coordinate System: NAD83, Zone 17