

SCHEDULE				
PART	BLOCK	PLAN	PIN	AREA
1				0.0321 Ha.
2				0.0198 Ha.
3				0.0198 Ha.
4	ALL OF BLOCK 76	REGISTERED PLAN 57M-812	ALL OF 63204-0926(LT)	0.0198 Ha.
5				0.0198 Ha.
6				0.0268 Ha.
7				0.0005 Ha.

PART 7: SUBJECT TO EASEMENT AS IN INST No. KL199923

**PLAN 57R-11053**

Received and deposited

February 6<sup>th</sup>, 2023

Christopher Holloway

Representative for the  
Land Registrar for the  
Land Titles Division of  
Victoria (No.57)

PLAN OF SURVEY OF  
**BLOCK 76**  
**REGISTERED PLAN 57M-812**  
**CITY OF KAWARTHA LAKES**

SCALE 1 : 250  
15 metres

THE INTENDED PLOT SIZE OF THIS PLAN IS 457mm IN WIDTH BY 356mm IN HEIGHT WHEN PLOTTED AT A SCALE OF 1:250

COE FISHER CAMERON, A DIVISION OF J.D. BARNES LIMITED

**METRIC** DISTANCES AND/OR COORDINATES SHOWN ON THIS PLAN ARE IN METRES AND CAN BE CONVERTED TO FEET BY DIVIDING BY 0.3048.

**NOTES**

BEARINGS ARE UTM GRID, DERIVED FROM OBSERVED REFERENCE POINTS A AND B, BY REAL TIME NETWORK (RTN) OBSERVATIONS, UTM ZONE 17, NAD83 (CSRS) (2010.0).

DISTANCES ARE GROUND AND CAN BE CONVERTED TO GRID BY MULTIPLYING BY THE COMBINED SCALE FACTOR OF 0.999943.

**LEGEND**

- DENOTES SURVEY MONUMENT FOUND
- DENOTES SURVEY MONUMENT SET
- SIB DENOTES STANDARD IRON BAR
- SSIB DENOTES SHORT STANDARD IRON BAR
- IB DENOTES IRON BAR
- PB DENOTES PLASTIC BAR
- JDB DENOTES J.D. BARNES O.L.S. LTD.
- P1 DENOTES REGISTERED PLAN 57M-812
- PCF DENOTES POURED CONCRETE FOUNDATION
- PL DENOTES PART LIMIT WITHIN DEMISING WALL

ALL BUILDING TIES ARE TAKEN TO CONCRETE FOUNDATION.

COMPLIANCE WITH ONTARIO BUILDING CODE SETBACK REQUIREMENTS ARE NOT VERIFIED BY THIS SURVEY.

ALL SET SIB AND PB MONUMENTS WERE USED DUE TO LACK OF OVERBURDEN AND/OR PROXIMITY OF UNDERGROUND UTILITIES IN ACCORDANCE WITH SECTION 11 (4) OF OREG. 525/91.

ALL BEARINGS AND DISTANCES AGREE WITH P - REGISTERED PLAN 57M-812 AND P1 - PLAN 57R-11010, UNLESS NOTED OTHERWISE.

**INTEGRATION DATA**

OBSERVED REFERENCE POINTS (ORPs): UTM ZONE 17, NAD83 (CSRS) (2010.0). COORDINATES TO URBAN ACCURACY PER SECTION 14 (2) OF OREG 216/10.

POINT ID	EASTING	NORTHING
ORP (A)	678 088.47	4 913 896.49
ORP (B)	678 106.03	4 913 947.28

COORDINATES CANNOT, IN THEMSELVES, BE USED TO RE-ESTABLISH CORNERS OR BOUNDARIES SHOWN ON THIS PLAN.

THE RESULTANT TIE BETWEEN ORP (A) AND ORP (B) IS 53.74m, N19°04'20"E

**SURVEYOR'S CERTIFICATE**

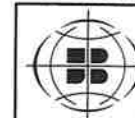
I CERTIFY THAT:

- THIS SURVEY AND PLAN ARE CORRECT AND IN ACCORDANCE WITH THE SURVEYS ACT, THE SURVEYORS ACT AND THE LAND TITLES ACT AND THE REGULATIONS MADE UNDER THEM.
- THE SURVEY WAS COMPLETED ON THE 13th DAY OF SEPTEMBER, 2022.

FEBRUARY 1, 2023  
DATE

*M. A. Hanna*  
MARYNA HANNA  
ONTARIO LAND SURVEYOR

THIS PLAN OF SURVEY RELATES TO AOLS PLAN SUBMISSION FORM NUMBER 2161843



**COE FISHER CAMERON**  
LAND SURVEYORS  
A Division of  
**J. D. Barnes Limited**

3 COMMERCE PLACE, UNIT 201, LINDSAY, ON K3V 0N5  
T: (705) 324-4152 F: (705) 324-8406 www.jdbarnes.com

DRAWN BY:	CHECKED BY:	REFERENCE NO.:
DBR	MAH	17-17-355-20-76-1
PLOTTED: 2/1/2023		DATED: 1/31/2023

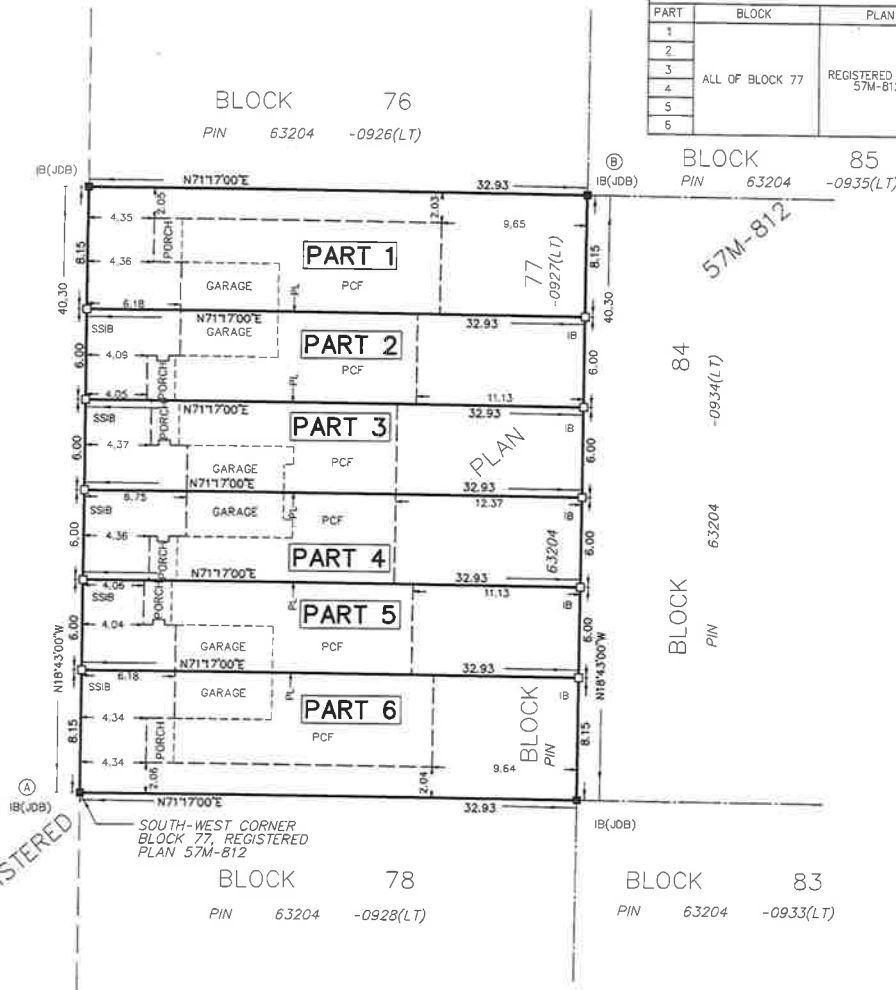
FILE: G:\17-17-355\20\Drawing\17-17-355-20-76.dgn

APPENDIX C  
to  
REPORT PLAN 2023-014

FILE NO. 065-2023-002



CORLEY STREET  
PIN 63204 -0971(LT)



#### INTEGRATION DATA

OBSERVED REFERENCE POINTS (ORPs): UTM ZONE 17, NAD83 (CSRS) (2010.0).  
COORDINATES TO URBAN ACCURACY PER SECTION 14 (2) OF O. REG 216/10.

POINT ID	EASTING	NORTHING
ORP (A)	678 101.40	4 913 858.32
ORP (B)	678 119.66	4 913 907.05

COORDINATES CANNOT, IN THEMSELVES, BE USED TO RE-ESTABLISH  
CORNERS OR BOUNDARIES SHOWN ON THIS PLAN.

THE RESULTANT TIE BETWEEN ORP (A) AND ORP (B) IS 52.04m, N20°32'10"E

#### SURVEYOR'S CERTIFICATE

I CERTIFY THAT:

- THIS SURVEY AND PLAN ARE CORRECT AND IN ACCORDANCE WITH THE SURVEYS  
ACT, THE SURVEYORS ACT AND THE LAND TITLES ACT AND THE REGULATIONS  
MADE UNDER THEM.
- THE SURVEY WAS COMPLETED ON THE 8th DAY OF DECEMBER, 2022.

FEBRUARY 1, 2023  
DATE

THIS PLAN OF SURVEY RELATES TO AOLS PLAN SUBMISSION FORM NUMBER 2161652

PART	BLOCK	PLAN	PIN	AREA
1	ALL OF BLOCK 77	REGISTERED PLAN 57M-812	ALL OF 63204-0927(LT)	0.0268 Ha.
2				0.0198 Ha.
3				0.0198 Ha.
4				0.0198 Ha.
5				0.0198 Ha.
6				0.0268 Ha.

PLAN 57R-11050

Received and deposited

February 6<sup>th</sup>, 2023

Joanne Hansen

Representative for the  
Land Registrar for the  
Land Titles Division of  
Victoria (No.57)

#### PLAN OF SURVEY OF BLOCK 77 REGISTERED PLAN 57M-812 CITY OF KAWARTHA LAKES

SCALE 1 : 250  
15 metres

THE INTENDED PLOT SIZE OF THIS PLAN IS 457mm IN WIDTH BY 356mm IN HEIGHT  
WHEN PLOTTED AT A SCALE OF 1:250

COE FISHER CAMERON, A DIVISION OF J.D. BARNES LIMITED

METRIC DISTANCES AND/OR COORDINATES SHOWN ON THIS PLAN ARE IN  
METRES AND CAN BE CONVERTED TO FEET BY DIVIDING BY 0.3048.

#### NOTES

BEARINGS ARE UTM GRID, DERIVED FROM OBSERVED REFERENCE POINTS A AND B,  
BY REAL TIME NETWORK (RTN) OBSERVATIONS, UTM ZONE 17, NAD83 (CSRS)  
(2010.0).

DISTANCES ARE GROUND AND CAN BE CONVERTED TO GRID BY MULTIPLYING BY  
THE COMBINED SCALE FACTOR OF 0.999948.

#### LEGEND

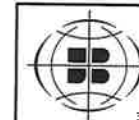
■	DENOTES	SURVEY MONUMENT FOUND
□	DENOTES	SURVEY MONUMENT SET
SIB	DENOTES	STANDARD IRON BAR
SSIB	DENOTES	SHORT STANDARD IRON BAR
IB	DENOTES	IRON BAR
JOB	DENOTES	J.D. BARNES O.L.S. LTD.
PCF	DENOTES	POURED CONCRETE FOUNDATION
PL	DENOTES	PART LIMIT WITHIN DEMISING WALL
P	DENOTES	REGISTERED PLAN 57M-812

ALL BUILDING TIES ARE TAKEN TO CONCRETE FOUNDATION.

COMPLIANCE WITH ONTARIO BUILDING CODE SETBACK REQUIREMENTS ARE  
NOT VERIFIED BY THIS SURVEY.

ALL SET SSB AND PB MONUMENTS WERE USED DUE TO LACK OF OVERBURDEN  
AND/OR PROXIMITY OF UNDERGROUND UTILITIES IN ACCORDANCE WITH  
SECTION 11 (4) OF O. REG. 525/91.

ALL BEARINGS AND DISTANCES AGREE WITH P - REGISTERED PLAN 57M-812,  
UNLESS NOTED OTHERWISE.



COE FISHER CAMERON

LAND SURVEYORS

A Division of

J. D. Barnes Limited

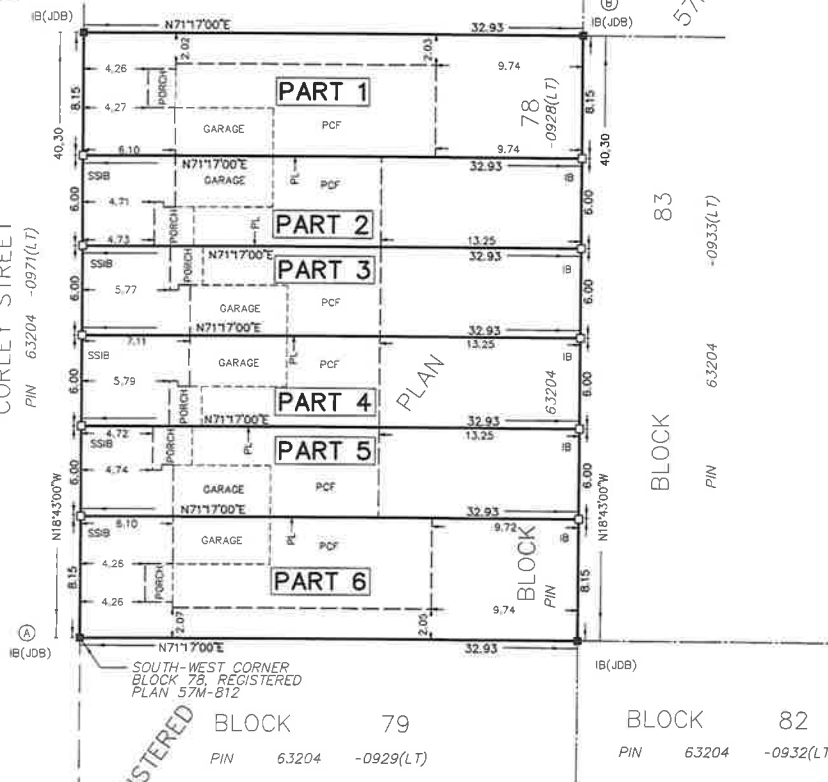
3 COMMERCE PLACE, UNIT 201, LINDSAY, ON K9V 0N5  
T: (705) 324-4152 F: (705) 324-8406 www.jdbarnes.com

DRAWN BY:	CDB	CHECKED BY:	MAH	REFERENCE NO.:	17-17-355-20-77
PLOTTED:	2/1/2023	DATED:	1/31/2023		

FILE: G:\17-17-355\20\Drawing\17-17-355-20-77.dgn



CORLEY STREET  
PIN 63204 -0971(LT)



#### INTEGRATION DATA

OBSERVED REFERENCE POINTS (ORPs): UTM ZONE 17, NAD83 (CSRS) (2010.0).  
COORDINATES TO URBAN ACCURACY PER SECTION 14 (2) OF OREG 216/10.

POINT ID	EASTING	NORTHING
ORP (A)	678 114.34	4 913 820.15
ORP (B)	678 132.59	4 913 868.89

COORDINATES CANNOT, IN THEMSELVES, BE USED TO RE-ESTABLISH CORNERS OR BOUNDARIES SHOWN ON THIS PLAN.

THE RESULTANT TIE BETWEEN ORP (A) AND ORP (B) IS 52.04m, N20°32'10"E

#### SURVEYOR'S CERTIFICATE

I CERTIFY THAT:

- THIS SURVEY AND PLAN ARE CORRECT AND IN ACCORDANCE WITH THE SURVEYS ACT, THE SURVEYORS ACT AND THE LAND TITLES ACT AND THE REGULATIONS MADE UNDER THEM.
- THE SURVEY WAS COMPLETED ON THE 31st DAY OF AUGUST, 2022.

FEBRUARY 1, 2023  
DATE

*M. A. Hanna*  
MARTIN A. HANNA  
ONTARIO LAND SURVEYOR

THIS PLAN OF SURVEY RELATES TO AOLS PLAN SUBMISSION FORM NUMBER 2161844

#### SCHEDULE

PART	BLOCK	PLAN	PIN	AREA
1				0.0268 Ha.
2				0.0198 Ha.
3				0.0198 Ha.
4	ALL OF BLOCK 78	REGISTERED PLAN 57M-812	ALL OF 63204-0928(LT)	0.0198 Ha.
5				0.0198 Ha.
6				0.0268 Ha.

PLAN 57R-11051

Received and deposited

February 6<sup>th</sup>, 2023

Joanne Hansen

Representative for the  
Land Registrar for the  
Land Titles Division of  
Victoria (No.57)

#### PLAN OF SURVEY OF BLOCK 78 REGISTERED PLAN 57M-812 CITY OF KAWARTHA LAKES

SCALE 1 : 250  
0 5 10 15 metres

THE INTENDED PLOT SIZE OF THIS PLAN IS 457mm IN WIDTH BY 356mm IN HEIGHT WHEN PLOTTED AT A SCALE OF 1:250

COE FISHER CAMERON, A DIVISION OF J.D. BARNES LIMITED

METRIC DISTANCES AND/OR COORDINATES SHOWN ON THIS PLAN ARE IN METRES AND CAN BE CONVERTED TO FEET BY DIVIDING BY 0.3048.

#### NOTES

BEARINGS ARE UTM GRID, DERIVED FROM OBSERVED REFERENCE POINTS A AND B, BY REAL TIME NETWORK (RTN) OBSERVATIONS, UTM ZONE 17, NAD83 (CSRS) (2010.0).

DISTANCES ARE GROUND AND CAN BE CONVERTED TO GRID BY MULTIPLYING BY THE COMBINED SCALE FACTOR OF 0.9999948.

#### LEGEND

■	DENOTES	SURVEY MONUMENT FOUND
□	DENOTES	SURVEY MONUMENT SET
SIB	DENOTES	STANDARD IRON BAR
SSIB	DENOTES	SHORT STANDARD IRON BAR
IB	DENOTES	IRON BAR
JOB	DENOTES	J.D. BARNES O.L.S., LTD.
P	DENOTES	REGISTERED PLAN 57M-812
PCF	DENOTES	POURED CONCRETE FOUNDATION
PL	DENOTES	PART LIMIT WITHIN DEMISING WALL

ALL BUILDING TIES ARE TAKEN TO CONCRETE FOUNDATION.

COMPLIANCE WITH ONTARIO BUILDING CODE SETBACK REQUIREMENTS ARE NOT VERIFIED BY THIS SURVEY.

ALL SET SSB AND PB MONUMENTS WERE USED DUE TO LACK OF OVERBURDEN AND/OR PROXIMITY OF UNDERGROUND UTILITIES IN ACCORDANCE WITH SECTION 11 (4) OF OREG. 525/91.

ALL BEARINGS AND DISTANCES AGREE WITH P - REGISTERED PLAN 57M-812, UNLESS NOTED OTHERWISE.



COE FISHER CAMERON

LAND SURVEYORS

A Division of

J. D. Barnes Limited

3 COMMERCE PLACE, UNIT 201, LINDSAY, ON K9V 0N5  
T: (705) 324-4152 F: (705) 324-8406 www.jdbarnes.com

DRAWN BY:	DBR	CHECKED BY:	MAH	REFERENCE NO.:	17-17-355-20-78
PLOTTED:	2/1/2023	DATED:	1/31/2023		

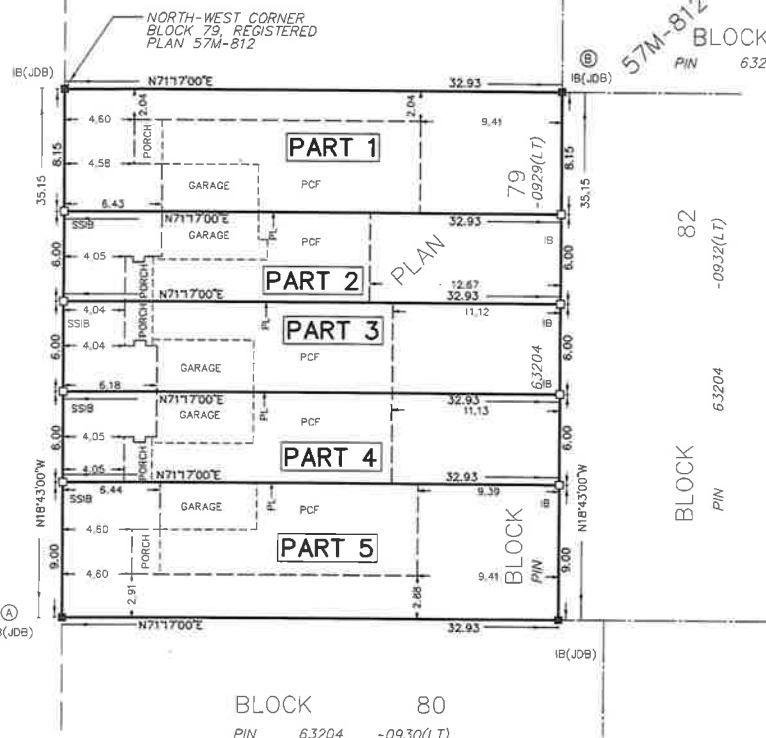
FILE: G:\17-17-355\20\Drawings\17-17-355-20-78.dgn



CORLEY STREET  
PIN 63204 -0977(LT)

REGISTERED

BLOCK 78  
PIN 63204 -0928(LT)



BLOCK 80  
PIN 63204 -0930(LT)

SCHEDULE				
PART	BLOCK	PLAN	PIN	AREA
1	ALL OF BLOCK 79	REGISTERED PLAN 57M-812	ALL OF 63204-0929(LT)	0.0268 Ha.
2				0.0198 Ha.
3				0.0198 Ha.
4				0.0198 Ha.
5				0.0296 Ha.

PLAN 57R-11065

Received and deposited

February 6<sup>th</sup>, 2023

Joanne Hansen

Representative for the  
Land Registrar for the  
Land Titles Division of  
Victoria (No.57)

PLAN OF SURVEY OF  
BLOCK 79  
REGISTERED PLAN 57M-812  
CITY OF KAWARTHA LAKES

SCALE 1 : 250

THE INTENDED PLOT SIZE OF THIS PLAN IS 457mm IN WIDTH BY 356mm IN HEIGHT  
WHEN PLOTTED AT A SCALE OF 1:250.

COE FISHER CAMERON, A DIVISION OF J.D. BARNES LIMITED

**METRIC** DISTANCES AND/OR COORDINATES SHOWN ON THIS PLAN ARE IN  
METRES AND CAN BE CONVERTED TO FEET BY DIVIDING BY 0.3048.

**NOTES**

BEARINGS ARE UTM GRID, DERIVED FROM OBSERVED REFERENCE POINTS A AND B,  
BY REAL TIME NETWORK (RTN) OBSERVATIONS, UTM ZONE 17, NAD83 (CSRS)  
(2010.0).

DISTANCES ARE GROUND AND CAN BE CONVERTED TO GRID BY MULTIPLYING BY  
THE COMBINED SCALE FACTOR OF 0.999948.

**LEGEND**

■	DENOTES	SURVEY MONUMENT FOUND
□	DENOTES	SURVEY MONUMENT SET
SB	DENOTES	STANDARD IRON BAR
SSIB	DENOTES	SHORT STANDARD IRON BAR
IB	DENOTES	IRON BAR
JDB	DENOTES	J.D. BARNES O.L.S., LTD.
PCF	DENOTES	POURED CONCRETE FOUNDATION
PL	DENOTES	PART LIMIT WITHIN DEMISING WALL
P	DENOTES	REGISTERED PLAN 57M-812

ALL BUILDING TIES ARE TAKEN TO CONCRETE FOUNDATION.

COMPLIANCE WITH ONTARIO BUILDING CODE SETBACK REQUIREMENTS ARE  
NOT VERIFIED BY THIS SURVEY.

ALL SET SSIB AND PB MONUMENTS WERE USED DUE TO LACK OF OVERBURDEN  
AND/OR PROXIMITY OF UNDERGROUND UTILITIES IN ACCORDANCE WITH  
SECTION 11 (4) OF O.REG. 525/91.

ALL BEARINGS AND DISTANCES AGREE WITH P - REGISTERED PLAN 57M-812,  
UNLESS NOTED OTHERWISE.

**INTEGRATION DATA**

OBSERVED REFERENCE POINTS (ORPs): UTM ZONE 17, NAD83 (CSRS) (2010.0).  
COORDINATES TO URBAN ACCURACY PER SECTION 14 (2) OF O.REG. 216/10.

POINT ID	EASTING	NORTHING
ORP (A)	678 125.61	4 913 786.86
ORP (B)	678 145.52	4 913 830.72

COORDINATES CANNOT, IN THEMSELVES, BE USED TO RE-ESTABLISH  
CORNERS OR BOUNDARIES SHOWN ON THIS PLAN.

THE RESULTANT TIE BETWEEN ORP (A) AND ORP (B) IS 48.16m, N24°24'55"E

**SURVEYOR'S CERTIFICATE**

I CERTIFY THAT:

- THIS SURVEY AND PLAN ARE CORRECT AND IN ACCORDANCE WITH THE SURVEYS  
ACT, THE SURVEYORS ACT AND THE LAND TITLES ACT AND THE REGULATIONS  
MADE UNDER THEM.
- THE SURVEY WAS COMPLETED ON THE 25th DAY OF NOVEMBER, 2022.

FEBRUARY 1, 2023  
DATE

*M. A. Hanna*  
MARTIN A. HANNA  
ONTARIO LAND SURVEYOR

THIS PLAN OF SURVEY RELATES TO AOLS PLAN SUBMISSION FORM NUMBER 2161863



COE FISHER CAMERON

LAND SURVEYORS

A Division of

J. D. Barnes Limited

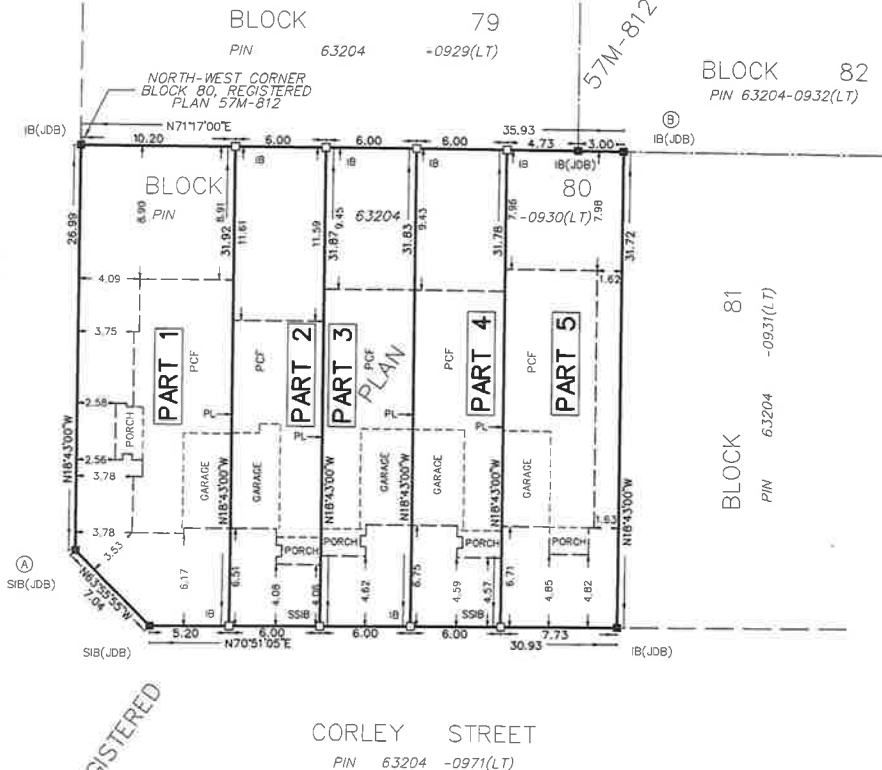
3 COMMERCE PLACE, UNIT 201, LINDSAY, ON K9V 0N5  
T: (705) 324-4152 F: (705) 324-8406 www.jdbarnes.com

DRAWN BY:	CHECKED BY:	REFERENCE NO.:
DBR	MAH	17-17-355-20-79
PLOTTED: 2/1/2023		DATED: 1/31/2023

FILE: G:\17-17-355\20\Drawing\17-17-355-20-78.dgn



CORLEY STREET  
PIN 63204 -0971(LT)



REGISTERED

CORLEY STREET  
PIN 63204 -0971(LT)

SCHEDULE				
PART	BLOCK	PLAN	PIN	AREA
1	ALL OF BLOCK 80	REGISTERED PLAN 57M-812	ALL OF 63204-0930(LT)	0.0313 Ha.
2				0.0191 Ha.
3				0.0191 Ha.
4				0.0191 Ha.
5				0.0245 Ha.

PLAN 57R-11064

Received and deposited

February 6<sup>th</sup>, 2023

April Sarkany

Representative for the  
Land Registrar for the  
Land Titles Division of  
Victoria (No.57)

PLAN OF SURVEY OF  
**BLOCK 80**  
**REGISTERED PLAN 57M-812**  
**CITY OF KAWARTHA LAKES**

SCALE 1 : 250



THE INTENDED PLOT SIZE OF THIS PLAN IS 457mm IN WIDTH BY 356mm IN HEIGHT  
WHEN PLOTTED AT A SCALE OF 1:250

COE FISHER CAMERON, A DIVISION OF J.D. BARNES LIMITED

**METRIC** DISTANCES AND/OR COORDINATES SHOWN ON THIS PLAN ARE IN  
METRES AND CAN BE CONVERTED TO FEET BY DIVIDING BY 0.3048.

**NOTES**

BEARINGS ARE UTM GRID, DERIVED FROM OBSERVED REFERENCE POINTS A AND B,  
BY REAL TIME NETWORK (RTN) OBSERVATIONS, UTM ZONE 17, NAD83 (CSRS)  
(2010.0)

DISTANCES ARE GROUND AND CAN BE CONVERTED TO GRID BY MULTIPLYING BY  
THE COMBINED SCALE FACTOR OF 0.995948.

**LEGEND**

■	DENOTES	SURVEY MONUMENT FOUND
□	DENOTES	SURVEY MONUMENT SET
SIB	DENOTES	STANDARD IRON BAR
SSIB	DENOTES	SHORT STANDARD IRON BAR
IB	DENOTES	IRON BAR
JDB	DENOTES	J.D. BARNES O.L.S. LTD.
P	DENOTES	REGISTERED PLAN 57M-812
PCF	DENOTES	POURED CONCRETE FOUNDATION
PL	DENOTES	PART LIMIT WITHIN DEMISING WALL

ALL BUILDING TIES ARE TAKEN TO CONCRETE FOUNDATION.

COMPLIANCE WITH ONTARIO BUILDING CODE SETBACK REQUIREMENTS ARE  
NOT VERIFIED BY THIS SURVEY.

ALL SET SSIB AND PB MONUMENTS WERE USED DUE TO LACK OF OVERBURDEN  
AND/OR PROXIMITY OF UNDERGROUND UTILITIES IN ACCORDANCE WITH  
SECTION 11 (4) OF OREG 525/91.

ALL BEARINGS AND DISTANCES AGREE WITH P = REGISTERED PLAN 57M-812,  
UNLESS NOTED OTHERWISE.

**INTEGRATION DATA**

OBSERVED REFERENCE POINTS (ORP): UTM ZONE 17, NAD83 (CSRS) (2010.0).  
COORDINATES TO URBAN ACCURACY PER SECTION 14 (2) OF OREG 216/10.

POINT ID	EASTING	NORTHING
ORP (A)	678 134.28	4 913 761.30
ORP (B)	678 159.64	4 913 798.39

COORDINATES CANNOT, IN THEMSELVES, BE USED TO RE-ESTABLISH  
CORNERS OR BOUNDARIES SHOWN ON THIS PLAN.

THE RESULTANT TIE BETWEEN ORP (A) AND ORP (B) IS 44.94m, N34°22'00"E

**SURVEYOR'S CERTIFICATE**

I CERTIFY THAT:

- THIS SURVEY AND PLAN ARE CORRECT AND IN ACCORDANCE WITH THE SURVEYS  
ACT, THE SURVEYORS ACT AND THE LAND TITLES ACT AND THE REGULATIONS  
MADE UNDER THEM.
- THE SURVEY WAS COMPLETED ON THE 1st DAY OF SEPTEMBER, 2022.

FEBRUARY 1, 2023  
DATE

*M. A. Hanna*  
MARIA A. HANNA  
ONTARIO LAND SURVEYOR

THIS PLAN OF SURVEY RELATES TO AOLS PLAN SUBMISSION FORM NUMBER 2161845



**COE FISHER CAMERON**

LAND SURVEYORS

A Division of

J. D. Barnes Limited

3 COMMERCE PLACE, UNIT 201, LINDSAY, ON K9V 0N5  
T: (705) 324-4152 F: (705) 324-8406 www.jdbarnes.com

DRAWN BY:	DBR	CHECKED BY:	MAH	REFERENCE NO.:	17-17-355-20-80
PLOTTED:	2/1/2023	DATED:	1/31/2023		

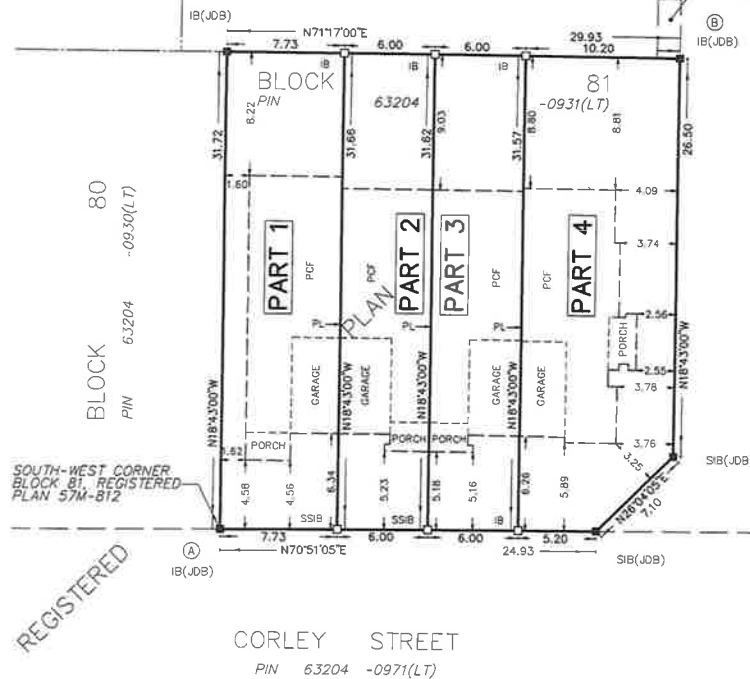
FILE: G:\17-17-355\20\Drawing\17-17-355-20-80.dgn



BLOCK 79

BLOCK 82  
PIN 63204 -0932(LT)

57M-812

PART 2  
PLAN 57R-11010  
SUBJECT TO EASEMENT AS IN  
INST No. KL199923SOUTH-WEST CORNER  
BLOCK 81, REGISTERED  
PLAN 57M-812

REGISTERED

CORLEY STREET  
PIN 63204 -0971(LT)KEENAN STREET  
PIN 63204 -0973(LT)

SCHEDULE				
PART	BLOCK	PLAN	PIN	AREA
1	ALL OF BLOCK 81	REGISTERED PLAN 57M-812	ALL OF 63204-0931(LT)	0.0245 Ha.
2				0.0190 Ha.
3				0.0190 Ha.
4				0.0308 Ha.

PLAN 57R-11057

Received and deposited

February 6<sup>th</sup>, 2023

Christen Chapman

Representative for the  
Land Registrar for the  
Land Titles Division of  
Victoria (No.57)PLAN OF SURVEY OF  
BLOCK 81  
REGISTERED PLAN 57M-812  
CITY OF KAWARTHA LAKES

SCALE 1 : 250

THE INTENDED PLOT SIZE OF THIS PLAN IS 457mm IN WIDTH BY 356mm IN HEIGHT  
WHEN PLOTTED AT A SCALE OF 1:250

COE FISHER CAMERON, A DIVISION OF J.D. BARNES LIMITED

**METRIC** DISTANCES AND/OR COORDINATES SHOWN ON THIS PLAN ARE IN  
METRES AND CAN BE CONVERTED TO FEET BY DIVIDING BY 0.3048.

## NOTES

BEARINGS ARE UTM GRID, DERIVED FROM OBSERVED REFERENCE POINTS A AND B,  
BY REAL TIME NETWORK (RTN) OBSERVATIONS, UTM ZONE 17, NAD83 (CSRS)  
(2010.0)DISTANCES ARE GROUND AND CAN BE CONVERTED TO GRID BY MULTIPLYING BY  
THE COMBINED SCALE FACTOR OF 0.999948.

## LEGEND

■	DENOTES	SURVEY MONUMENT FOUND
□	DENOTES	SURVEY MONUMENT SET
SIB	DENOTES	STANDARD IRON BAR
SSIB	DENOTES	SHORT STANDARD IRON BAR
IB	DENOTES	IRON BAR
JOB	DENOTES	J.D. BARNES O.L.S., LTD.
P	DENOTES	REGISTERED PLAN 57M-812
PCF	DENOTES	POURED CONCRETE FOUNDATION
PL	DENOTES	PART LIMIT WITHIN DEMISING WALL

ALL BUILDING TIES ARE TAKEN TO CONCRETE FOUNDATION.

COMPLIANCE WITH ONTARIO BUILDING CODE SETBACK REQUIREMENTS ARE  
NOT VERIFIED BY THIS SURVEY.ALL SET SSIB AND PB MONUMENTS WERE USED DUE TO LACK OF OVERBURDEN  
AND/OR PROXIMITY OF UNDERGROUND UTILITIES IN ACCORDANCE WITH  
SECTION 11 (4) OF O. REG. 525/91.ALL BEARINGS AND DISTANCES AGREE WITH P = REGISTERED PLAN 57M-812,  
UNLESS NOTED OTHERWISE.

## INTEGRATION DATA

OBSERVED REFERENCE POINTS (ORP): UTM ZONE 17, NAD83 (CSRS) (2010.0),  
COORDINATES TO URBAN ACCURACY PER SECTION 14 (2) OF O. REG. 216/10.

POINT ID	EASTING	NORTHING
ORP (A)	678 169.82	4 913 768.35
ORP (B)	678,187.99	4 913 808.00

COORDINATES CANNOT, IN THEMSELVES, BE USED TO RE-ESTABLISH  
CORNERS OR BOUNDARIES SHOWN ON THIS PLAN.

THE RESULTANT TIE BETWEEN ORP (A) AND ORP (B) IS 43.61m, N24°37'05"E

## SURVEYOR'S CERTIFICATE

I CERTIFY THAT:

- THIS SURVEY AND PLAN ARE CORRECT AND IN ACCORDANCE WITH THE SURVEY  
ACT, THE SURVEYORS ACT AND THE LAND TITLES ACT AND THE REGULATIONS  
MADE UNDER THEM.
- THE SURVEY WAS COMPLETED ON THE 25TH DAY OF OCTOBER, 2022.

FEBRUARY 3, 2023  
DATE  
MARY A. HANNA  
ONTARIO LAND SURVEYOR

THIS PLAN OF SURVEY RELATES TO AOLS PLAN SUBMISSION FORM NUMBER 2161857



COE FISHER CAMERON

LAND SURVEYORS

A Division of

J. D. Barnes Limited

3 COMMERCE PLACE, UNIT 201, LINDSAY, ON K9V 0N5  
T: (705) 324-4152 F: (705) 324-8406 www.jdbarnes.com

DRAWN BY:	CHECKED BY:	REFERENCE NO.:
DBR	MAH	17-17-355-20-81
PLOTTED:	DATE:	
2/1/2023	1/31/2023	

FILE: G:\17-17-355\20\Drawing\17-17-355-20-81.dgn



BLOCK 78  
PIN 63204 -0928(LT)

BLOCK 83  
PIN 63204 -0933(LT)

BLOCK 79  
PIN 63204 -0929(LT)

SOUTH-WEST CORNER  
BLOCK 82, REGISTERED  
PLAN 57M-812

REGISTERED  
BLOCK 80  
PIN 63204 -0930(LT)

BLOCK 81  
PIN 63204 -0931(LT)

SCHEDULE				
PART	BLOCK	REGISTERED PLAN	PIN	AREA
1	ALL OF BLOCK 82	57M-812	ALL OF 63204-0932(LT)	0.0290 Ha.
2				0.0198 Ha.
3				0.0198 Ha.
4				0.0198 Ha.
5				0.0268 Ha.
6				0.0008 Ha.

PART 6: SUBJECT TO EASEMENT AS IN INST. No. KL199923

PLAN 57R-11062

Received and deposited

February 6<sup>th</sup>, 2023

Christen Chapman

Representative for the  
Land Registrar for the  
Land Titles Division of  
Victoria (No.57)

PLAN OF SURVEY OF  
BLOCK 82  
REGISTERED PLAN 57M-812  
CITY OF KAWARTHA LAKES

SCALE 1 : 250

THE INTENDED PLOT SIZE OF THIS PLAN IS 457mm IN WIDTH BY 356mm IN HEIGHT  
WHEN PLOTTED AT A SCALE OF 1:230

COE FISHER CAMERON, A DIVISION OF J.D. BARNES LIMITED

**METRIC** DISTANCES AND/OR COORDINATES SHOWN ON THIS PLAN ARE IN  
METRES AND CAN BE CONVERTED TO FEET BY DIVIDING BY 0.3048.

**NOTES**  
BEARINGS ARE UTM GRID, DERIVED FROM OBSERVED REFERENCE POINTS A AND B.  
BY REAL TIME NETWORK (RTN) OBSERVATIONS, UTM ZONE 17, NAD83 (CSRS)  
(2010.0).

DISTANCES ARE GROUND AND CAN BE CONVERTED TO GRID BY MULTIPLYING BY  
THE COMBINED SCALE FACTOR OF 0.999948.

**LEGEND**

■	DENOTES	SURVEY MONUMENT FOUND
□	DENOTES	SURVEY MONUMENT SET
▣	DENOTES	STANDARD IRON BAR
SSIB	DENOTES	SHORT STANDARD IRON BAR
IB	DENOTES	IRON BAR
PB	DENOTES	PLASTIC BAR
JOB	DENOTES	J.D. BARNES O.L.S., LTD.
PCF	DENOTES	POURED CONCRETE FOUNDATION
PL	DENOTES	PART LIMIT WITHIN DEMISING WALL
P	DENOTES	REGISTERED PLAN 57M-812
P1	DENOTES	REGISTERED PLAN 57R-11010

ALL BUILDING TIES ARE TAKEN TO CONCRETE FOUNDATION.  
COMPLIANCE WITH ONTARIO BUILDING CODE SETBACK REQUIREMENTS ARE  
NOT VERIFIED BY THIS SURVEY.

ALL SET SSIB AND PB MONUMENTS WERE USED DUE TO LACK OF OVERBURDEN  
AND/OR PROXIMITY OF UNDERGROUND UTILITIES IN ACCORDANCE WITH  
SECTION 11 (4) OF OREG. 525/91.

ALL BEARINGS AND DISTANCES AGREE WITH P - REGISTERED PLAN 57M-812 AND  
P1 - PLAN 57R-11010  
UNLESS NOTED OTHERWISE.

		<b>COE FISHER CAMERON</b>		SURVEYING MAPPING GIS	
LAND SURVEYORS		A Division of			
		<b>J. D. Barnes Limited</b>			
3 COMMERCIAL PLACE, UNIT 201, LINDSAY, ON K9V 0N5		T: (705) 324-4152 F: (705) 324-8406		www.jdbarnes.com	
DRAWN BY:	DBR	CHECKED BY:	MAH	REFERENCE NO.:	17-17-355-20-82
PLOTTED:	2/1/2023	DATED:	1/31/2023		

INTEGRATION DATA		
OBSERVED REFERENCE POINTS (ORPs): UTM ZONE 17, NAD83 (CSRS) (2010.0). COORDINATES TO URBAN ACCURACY PER SECTION 14 (2) OF OREG 216/10.		
POINT ID	EASTING	NORTHING
ORP (A)	678 156.80	4 913 797.43
ORP (B)	678 176.71	4 913 841.29
COORDINATES CANNOT, IN THEMSELVES, BE USED TO RE-ESTABLISH CORNERS OR BOUNDARIES SHOWN ON THIS PLAN.		
THE RESULTANT TIE BETWEEN ORP (A) AND ORP (B) IS 48.16m, N24°24'35"E		

**SURVEYOR'S CERTIFICATE**

I CERTIFY THAT:

- THIS SURVEY AND PLAN ARE CORRECT AND IN ACCORDANCE WITH THE SURVEYS  
ACT, THE SURVEYORS ACT AND THE LAND TITLES ACT AND THE REGULATIONS  
MADE UNDER THEM
- THE SURVEY WAS COMPLETED ON THE 13th DAY OF SEPTEMBER, 2022.

FEBRUARY 1, 2023  
DATE

*M. A. Hanna*  
MARYN A. HANNA  
ONTARIO LAND SURVEYOR

THIS PLAN OF SURVEY RELATES TO AOLS PLAN SUBMISSION FORM NUMBER 2161846

FILE: G:\17-17-355\20\Drawing\17-17-355-20-82.dgn



BLOCK 77  
PIN 63204 -0927(LT)

BLOCK 84  
PIN 63204 +0934(LT)

BLOCK 78  
PIN 63204 -0928(LT)

BLOCK 79  
PIN 63204 -0929(LT)

BLOCK 82  
PIN 63204 -0932(LT)

INTEGRATION DATA			
OBSERVED REFERENCE POINTS (ORP's): UTM ZONE 17, NAD83 (CSRS) (2010.0). COORDINATES TO URBAN ACCURACY PER SECTION 14 (2) OF O.REG 216/10.			
POINT ID	EASTING	NORTHING	
ORP (A)	678 145.52	4 913 830.72	
ORP (B)	678 163.78	4 913 879.45	
COORDINATES CANNOT, IN THEMSELVES, BE USED TO RE-ESTABLISH CORNERS OR BOUNDARIES SHOWN ON THIS PLAN.			
THE RESULTANT TIE BETWEEN ORP (A) AND ORP (B) IS 52.04m, N20°32'10"E			

#### SURVEYOR'S CERTIFICATE

- I CERTIFY THAT:  
1. THIS SURVEY AND PLAN ARE CORRECT AND IN ACCORDANCE WITH THE SURVEY'S ACT, THE SURVEYORS ACT AND THE LAND TITLES ACT AND THE REGULATIONS MADE UNDER THEM.
2. THE SURVEY WAS COMPLETED ON THE 12th DAY OF DECEMBER, 2022.

FEBRUARY 1, 2023  
DATE

THIS PLAN OF SURVEY RELATES TO AOLS PLAN SUBMISSION FORM NUMBER 2161878

*M. A. Hanna*  
MARYNA HANNA  
ONTARIO LAND SURVEYOR

SCHEDULE				
PART	BLOCK	PLAN	PIN	AREA
1	ALL OF BLOCK 83	REGISTERED PLAN 57M-812	ALL OF 63204-0933(LT)	0.0258 Ha
2				0.0198 Ha
3				0.0198 Ha
4				0.0198 Ha
5				0.0198 Ha
6				0.0268 Ha

PLAN 57R-11074

Received and deposited

February 9<sup>th</sup>, 2023

Alana Kinsey

Representative for the  
Land Registrar for the  
Land Titles Division of  
Victoria (No.57)

PLAN OF SURVEY OF

**BLOCK 83**  
**REGISTERED PLAN 57M-812**  
**CITY OF KAWARTHA LAKES**

SCALE 1 : 250  
5 0 5 10 15 metres

THE INTENDED PLOT SIZE OF THIS PLAN IS 457mm IN WIDTH BY 358mm IN HEIGHT WHEN PLOTTED AT A SCALE OF 1:250

COE FISHER CAMERON, A DIVISION OF J.D. BARNES LIMITED

**METRIC** DISTANCES AND/OR COORDINATES SHOWN ON THIS PLAN ARE IN METRES AND CAN BE CONVERTED TO FEET BY DIVIDING BY 0.3048.

#### NOTES

BEARINGS ARE UTM GRID, DERIVED FROM OBSERVED REFERENCE POINTS A AND B, BY REAL TIME NETWORK (RTN) OBSERVATIONS, UTM ZONE 17, NAD83 (CSRS) (2010.0).

DISTANCES ARE GROUND AND CAN BE CONVERTED TO GRID BY MULTIPLYING BY THE COMBINED SCALE FACTOR OF 0.999948.

#### LEGEND

■	DENOTES	SURVEY MONUMENT FOUND
□	DENOTES	SURVEY MONUMENT SET
SIB	DENOTES	STANDARD IRON BAR
SSIB	DENOTES	SHORT STANDARD IRON BAR
IB	DENOTES	IRON BAR
JDB	DENOTES	J.D. BARNES O.L.S., LTD.
PCF	DENOTES	POURED CONCRETE FOUNDATION
PL	DENOTES	PART LIMIT WITHIN DEMISING WALL
P	DENOTES	REGISTERED PLAN 57M-812

ALL BUILDING TIES ARE TAKEN TO CONCRETE FOUNDATION.

COMPLIANCE WITH ONTARIO BUILDING CODE SETBACK REQUIREMENTS ARE NOT VERIFIED BY THIS SURVEY.

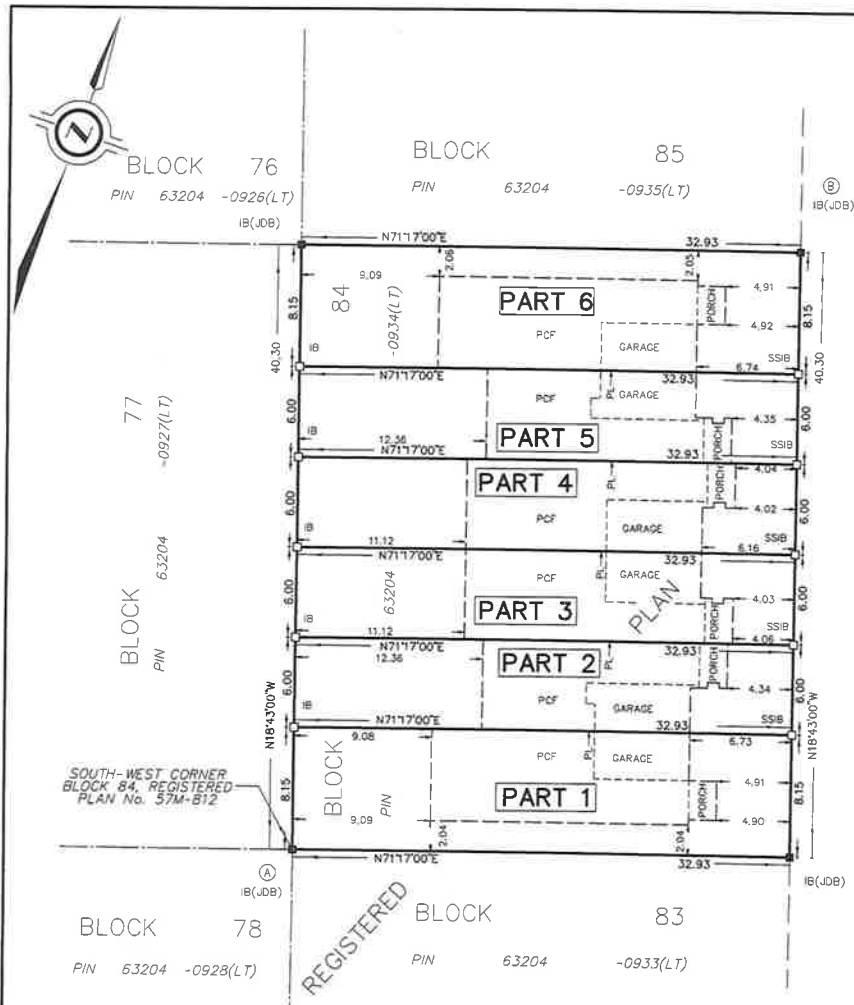
ALL SET SSB AND PB MONUMENTS WERE USED DUE TO LACK OF OVERBURDEN AND/OR PROXIMITY OF UNDERGROUND UTILITIES IN ACCORDANCE WITH SECTION 11 (4) OF O.REG. 525/91.

ALL BEARINGS AND DISTANCES AGREE WITH P = REGISTERED PLAN 57M-812, UNLESS NOTED OTHERWISE.

		<b>COE FISHER CAMERON</b> LAND SURVEYORS A Division of <b>J. D. Barnes Limited</b>		SURVEYING MAPPING GIS
3 COMMERCE PLACE, UNIT 201, LINDSAY, ON K9V 0N5 T: (705) 324-4152 F: (705) 324-8406 www.jdbarnes.com				
DRAWN BY: DBR	CHECKED BY: MAH	REFERENCE NO.: 17-17-355-20-B3		
PLOTTED: 2/9/2023		DATED: 1/31/2023		

FILE: G:\17-17-355\20\Drawing\17-17-355-20-B3.dgn





SCHEDULE			
PART	BLOCK	PLAN	PIN
1	ALL OF BLOCK 84	REGISTERED PLAN 57M-812	ALL OF 63204-0934(LT)
2			0.0268 Ha.
3			0.0198 Ha.
4			0.0198 Ha.
5			0.0198 Ha.
6			0.0268 Ha.

**PLAN 57R-11066**

Received and deposited

February 6<sup>th</sup>, 2023

April Sarkany

Representative for the  
Land Registrar for the  
Land Titles Division of  
Victoria (No.57)

PLAN OF SURVEY OF  
**BLOCK 84**  
**REGISTERED PLAN 57M-812**  
**CITY OF KAWARTHA LAKES**



THE INTENDED PLOT SIZE OF THIS PLAN IS 457mm IN WIDTH BY 356mm IN HEIGHT WHEN PLOTTED AT A SCALE OF 1:250

COE FISHER CAMERON, A DIVISION OF J.D. BARNES LIMITED

**METRIC** DISTANCES AND/OR COORDINATES SHOWN ON THIS PLAN ARE IN METRES AND CAN BE CONVERTED TO FEET BY DIVIDING BY 0.3048.

**NOTES**

BEARINGS ARE UTM GRID, DERIVED FROM OBSERVED REFERENCE POINTS A AND B, BY REAL TIME NETWORK (RTN) OBSERVATIONS, UTM ZONE 17, NAD83 (CSRS) (2010.0).

DISTANCES ARE GROUND AND CAN BE CONVERTED TO GRID BY MULTIPLYING BY THE COMBINED SCALE FACTOR OF 0.999948.

**LEGEND**

- DENOTES SURVEY MONUMENT FOUND
- DENOTES SURVEY MONUMENT SET
- SB DENOTES STANDARD IRON BAR
- SSIB DENOTES SHORT STANDARD IRON BAR
- IB DENOTES IRON BAR
- JDB DENOTES J.D. BARNES O.L.S. LTD.
- PCF DENOTES POURED CONCRETE FOUNDATION
- PL DENOTES PART LIMIT WITHIN DEMISING WALL
- P DENOTES REGISTERED PLAN 57M-812

ALL BUILDING TIES ARE TAKEN TO CONCRETE FOUNDATION.

COMPLIANCE WITH ONTARIO BUILDING CODE SETBACK REQUIREMENTS ARE NOT VERIFIED BY THIS SURVEY.

ALL SET SSIB AND PB MONUMENTS WERE USED DUE TO LACK OF OVERBURDEN AND/OR PROXIMITY OF UNDERGROUND UTILITIES IN ACCORDANCE WITH SECTION 11 (4) OF OREG. 525/91.

ALL BEARINGS AND DISTANCES AGREE WITH P - REGISTERED PLAN 57M-812, UNLESS NOTED OTHERWISE.

INTEGRATION DATA		
OBSERVED REFERENCE POINTS (ORPs): UTM ZONE 17, NAD83 (CSRS) (2010.0), COORDINATES TO URBAN ACCURACY PER SECTION 14 (2) OF O.REG 216/10.		
POINT ID	EASTING	NORTHING
ORP (A)	678 132.59	4 913 858.89
ORP (B)	678 150.85	4 913 917.62
COORDINATES CANNOT, IN THEMSELVES, BE USED TO RE-ESTABLISH CORNERS OR BOUNDARIES SHOWN ON THIS PLAN.		
THE RESULTANT TIE BETWEEN ORP (A) AND ORP (B) IS 52.04m, N20°32'10"E		

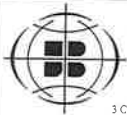
**SURVEYOR'S CERTIFICATE**

- I CERTIFY THAT:
- THIS SURVEY AND PLAN ARE CORRECT AND IN ACCORDANCE WITH THE SURVEY ACT, THE SURVEYORS ACT AND THE LAND TITLES ACT AND THE REGULATIONS MADE UNDER THEM.
- THE SURVEY WAS COMPLETED ON THE 9th DAY OF SEPTEMBER, 2022.

FEBRUARY 1, 2023  
DATE

*M. A. Hanna*  
MARINA A. HANNA  
ONTARIO LAND SURVEYOR

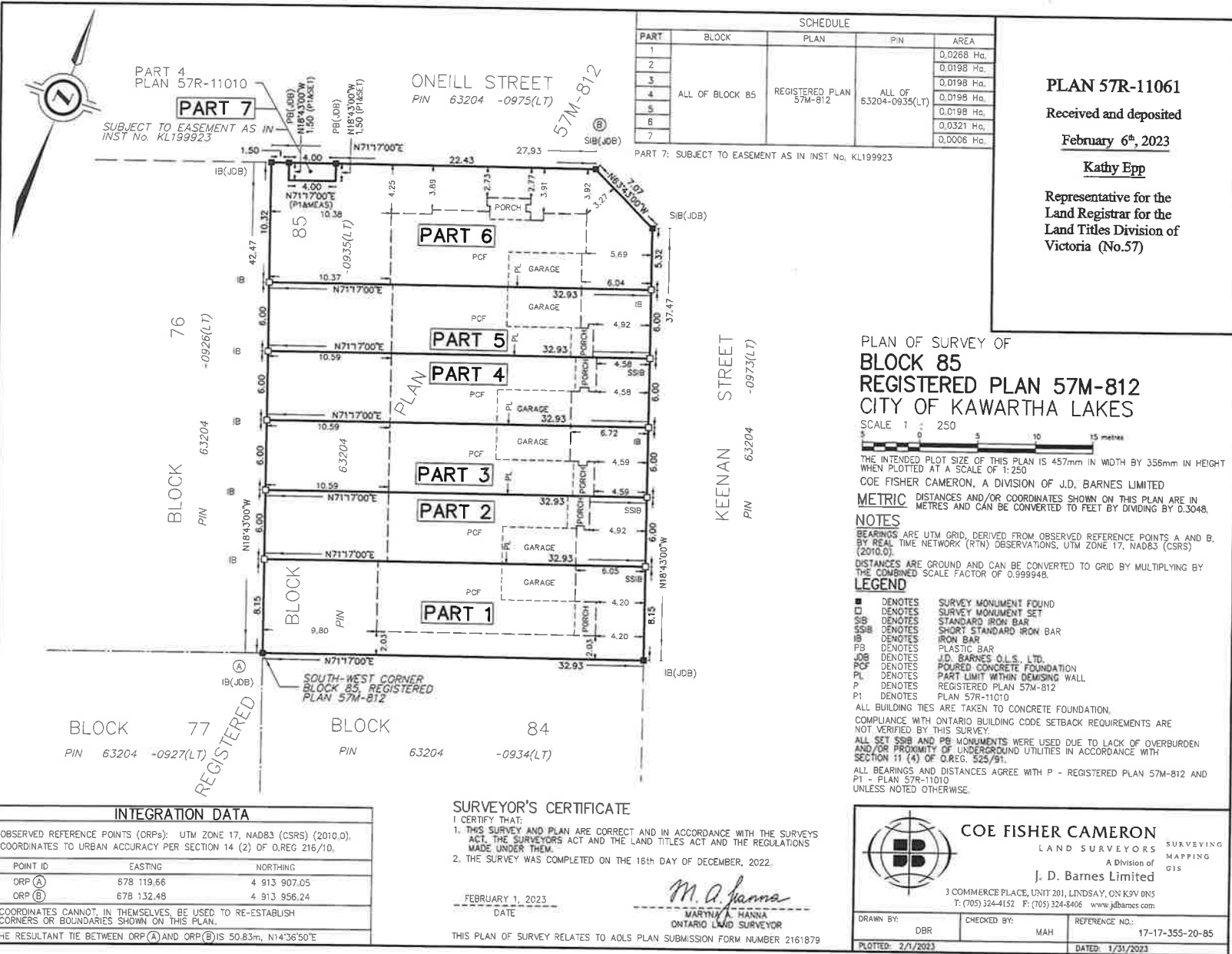
THIS PLAN OF SURVEY RELATES TO AOLS PLAN SUBMISSION FORM NUMBER 2161847



**COE FISHER CAMERON**  
LAND SURVEYORS  
A Division of  
**J. D. Barnes Limited**

3 COMMERCE PLACE, UNIT 201, LINDSAY, ON K9V 0N5  
T: (705) 324-4152 F: (705) 324-8406 www.jdbarnes.com

DRAWN BY: DBR	CHECKED BY: MAH	REFERENCE NO.: 17-17-355-20-84
PLOTTED: 2/2/2023		DATED: 1/31/2023



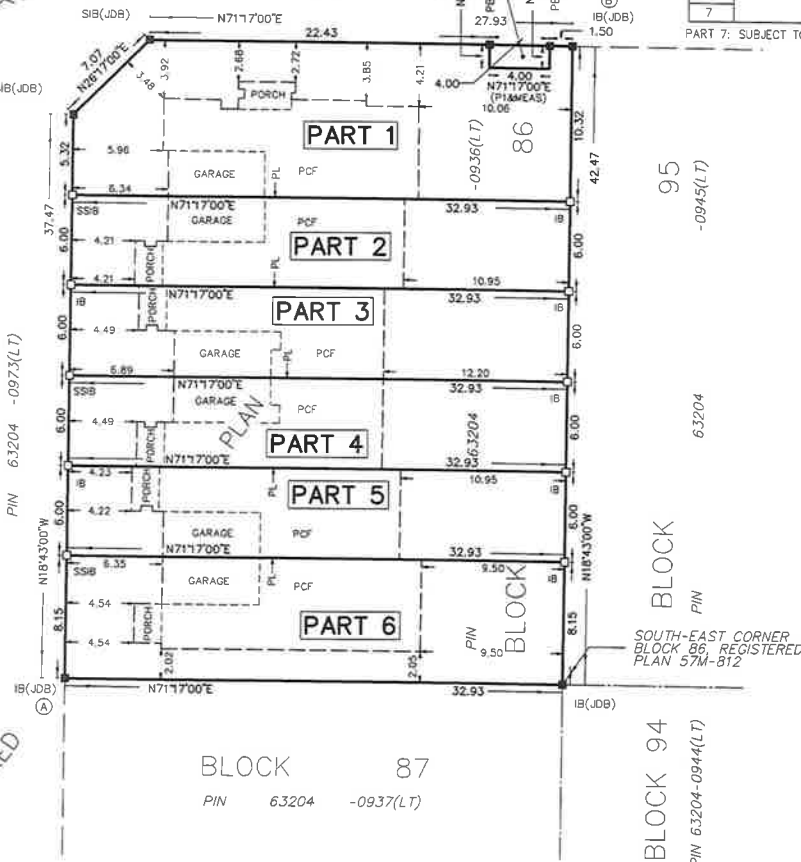


KEENAN STREET  
PIN 63204 -0973(LT)

INTEGRATION DATA		
OBSERVED REFERENCE POINTS (ORPs): UTM ZONE 17, NAD83 (CSRS) (2010.0). COORDINATES TO URBAN ACCURACY PER SECTION 14 (2) OF O. REG 216/10.		
POINT ID	EASTING	NORTHING
ORP (A)	678 169.79	4 913 924.04
ORP (B)	678 187.35	4 913 974.83
COORDINATES CANNOT, IN THEMSELVES, BE USED TO RE-ESTABLISH CORNERS OR BOUNDARIES SHOWN ON THIS PLAN.		
THE RESULTANT TIE BETWEEN ORP (A) AND ORP (B) IS 53.74m, N19°04'20"E		

PART 5, PLAN 57R-11010  
SUBJECT TO EASEMENT AS IN  
INST No. KL199923

ONEILL STREET  
PIN 63204 -0975(LT)



#### SURVEYOR'S CERTIFICATE

- I CERTIFY THAT:
- THIS SURVEY AND PLAN ARE CORRECT AND IN ACCORDANCE WITH THE SURVEY ACT, THE SURVEYORS ACT AND THE LAND TITLES ACT AND THE REGULATIONS MADE UNDER THEM.
  - THE SURVEY WAS COMPLETED ON THE 23rd DAY OF SEPTEMBER, 2022.

FEBRUARY 1, 2023  
DATE

*M. A. Hanna*  
MARYNA A. HANNA  
ONTARIO LAND SURVEYOR

THIS PLAN OF SURVEY RELATES TO AOLS PLAN SUBMISSION FORM NUMBER 2161849

#### SCHEDULE

PART	BLOCK	PLAN	PIN	AREA
1				0.0321 Ha.
2				0.0198 Ha.
3				0.0198 Ha.
4	ALL OF BLOCK 86	REGISTERED PLAN 57M-812	ALL OF 63204-0936(LT)	0.0198 Ha.
5				0.0198 Ha.
6				0.0268 Ha.
7				0.0006 Ha.

PART 7: SUBJECT TO EASEMENT AS IN INST. No. KL199923

PLAN 57R-11063

Received and deposited

February 6<sup>th</sup>, 2023

Kathy Epp

Representative for the  
Land Registrar for the  
Land Titles Division of  
Victoria (No.57)

PLAN OF SURVEY OF

BLOCK 86

REGISTERED PLAN 57M-812

CITY OF KAWARTHA LAKES

SCALE 1 : 250

5 0 5 10 15 metres

THE INTENDED PLOT SIZE OF THIS PLAN IS 457mm IN WIDTH BY 356mm IN HEIGHT  
WHEN PLOTTED AT A SCALE OF 1:250

COE FISHER CAMERON, A DIVISION OF J.D. BARNES LIMITED

METRIC DISTANCES AND/OR COORDINATES SHOWN ON THIS PLAN ARE IN  
METRES AND CAN BE CONVERTED TO FEET BY DIVIDING BY 0.3048.

#### NOTES

BEARINGS ARE UTM GRID, DERIVED FROM OBSERVED REFERENCE POINTS A AND B,  
BY REAL TIME NETWORK (RTN) OBSERVATIONS, UTM ZONE 17, NAD83 (CSRS)  
(2010.0).

DISTANCES ARE GROUND AND CAN BE CONVERTED TO GRID BY MULTIPLYING BY  
THE COMBINED SCALE FACTOR OF 0.999948.

#### LEGEND

■	DENOTES	SURVEY MONUMENT FOUND
□	DENOTES	SURVEY MONUMENT SET
SIB	DENOTES	STANDARD IRON BAR
SSIB	DENOTES	SHORT STANDARD IRON BAR
IB	DENOTES	IRON BAR
PB	DENOTES	PLASTIC BAR
JDB	DENOTES	J.D. BARNES O.L.S., LTD.
P	DENOTES	REGISTERED PLAN 57M-812
P1	DENOTES	PLAN 57R-11010
PCF	DENOTES	POURED CONCRETE FOUNDATION
PL	DENOTES	PART LIMIT WITHIN DEMISING WALL

ALL BUILDING TIES ARE TAKEN TO CONCRETE FOUNDATION.

COMPLIANCE WITH ONTARIO BUILDING CODE SETBACK REQUIREMENTS ARE  
NOT VERIFIED BY THIS SURVEY.

ALL SET SIB AND PB MONUMENTS WERE USED DUE TO LACK OF OVERBURDEN  
AND/OR PROXIMITY OF UNDERGROUND UTILITIES IN ACCORDANCE WITH  
SECTION 11 (4) OF O. REG. 525/91.

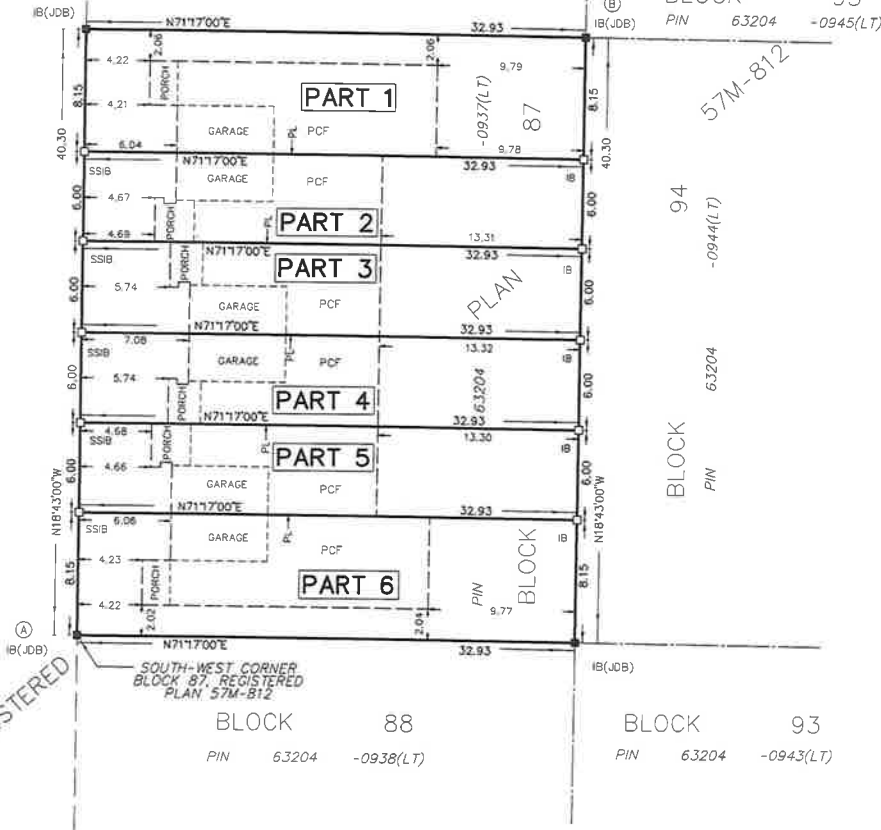
ALL BEARINGS AND DISTANCES AGREE WITH P - REGISTERED PLAN 57M-812  
AND P1 - PLAN 57R-11010, UNLESS NOTED OTHERWISE.

	COE FISHER CAMERON		SURVEYING MAPPING GIS
	LAND SURVEYORS		
	A Division of J. D. Barnes Limited		
3 COMMERCE PLACE, UNIT 201, LINDSAY, ON K9V 0N5 T: (705) 324-4152 F: (705) 324-8406 www.jdbarnes.com			
DRAWN BY: OBR	CHECKED BY: MAH	REFERENCE NO.: 17-17-355-20-86	
PLOTTED: 2/1/2023		DATED: 1/31/2023	

FILE: G:\17-17-355\20\Drawing\17-17-355-20-86.dgn



KEENAN STREET  
PIN 63204 -0973(LT)



INTEGRATION DATA		
OBSERVED REFERENCE POINTS (ORPs): UTM ZONE 17, NAD83 (CSRS) (2010.0), COORDINATES TO URBAN ACCURACY PER SECTION 14 (2) OF O.Reg. 216/10.		
POINT ID	EASTING	NORTHING
ORP (A)	678 182.72	4 913 885.87
ORP (B)	678 200.98	4 913 934.60
COORDINATES CANNOT, IN THEMSELVES, BE USED TO RE-ESTABLISH CORNERS OR BOUNDARIES SHOWN ON THIS PLAN.		
THE RESULTANT TIE BETWEEN ORP (A) AND ORP (B) IS 52.04m, N20°32'10"E		

#### SURVEYOR'S CERTIFICATE

- I CERTIFY THAT:
- THIS SURVEY AND PLAN ARE CORRECT AND IN ACCORDANCE WITH THE SURVEYS ACT, THE SURVEYORS ACT AND THE LAND TITLES ACT AND THE REGULATIONS MADE UNDER THEM.
  - THE SURVEY WAS COMPLETED ON THE 2nd DAY OF DECEMBER, 2022.

FEBRUARY 1, 2023  
DATE

*M. A. Hanna*  
MARTHA A. HANNA  
ONTARIO LAND SURVEYOR

THIS PLAN OF SURVEY RELATES TO AOLS PLAN SUBMISSION FORM NUMBER 2161850

SCHEDULE				
PART	BLOCK	PLAN	PIN	AREA
1	ALL OF BLOCK 87	REGISTERED PLAN 57M-812	ALL OF 63204-0937(LT)	0.0268 Ha.
2				0.0198 Ha.
3				0.0198 Ha.
4				0.0198 Ha.
5				0.0198 Ha.
6				0.0268 Ha.

#### PLAN 57R-11055

Received and deposited

February 6<sup>th</sup>, 2023

Suzanne Iacovitti

Representative for the  
Land Registrar for the  
Land Titles Division of  
Victoria (No.57)

#### PLAN OF SURVEY OF BLOCK 87 REGISTERED PLAN 57M-812 CITY OF KAWARTHA LAKES

SCALE 1 : 250  
5 0 5 10 15 metres

THE INTENDED PLOT SIZE OF THIS PLAN IS 457mm IN WIDTH BY 356mm IN HEIGHT WHEN PLOTTED AT A SCALE OF 1:250

COE FISHER CAMERON, A DIVISION OF J.D. BARNES LIMITED

METRIC DISTANCES AND/OR COORDINATES SHOWN ON THIS PLAN ARE IN METRES AND CAN BE CONVERTED TO FEET BY DIVIDING BY 0.3048.

#### NOTES

BEARINGS ARE UTM GRID, DERIVED FROM OBSERVED REFERENCE POINTS A AND B, BY REAL TIME NETWORK (RTN) OBSERVATIONS, UTM ZONE 17, NAD83 (CSRS) (2010.0).

DISTANCES ARE GROUND AND CAN BE CONVERTED TO GRID BY MULTIPLYING BY THE COMBINED SCALE FACTOR OF 0.999948.

#### LEGEND

- DENOTES SURVEY MONUMENT FOUND
- DENOTES SURVEY MONUMENT SET
- SSIB DENOTES STANDARD IRON BAR
- SSIB DENOTES SHORT STANDARD IRON BAR
- IB DENOTES IRON BAR
- JDB DENOTES J.D. BARNES O.L.S., LTD.
- PCF DENOTES POURED CONCRETE FOUNDATION
- PL DENOTES PART LIMIT WITHIN DEMISING WALL
- P DENOTES REGISTERED PLAN 57M-812

ALL BUILDING TIES ARE TAKEN TO CONCRETE FOUNDATION.

COMPLIANCE WITH ONTARIO BUILDING CODE SETBACK REQUIREMENTS ARE NOT VERIFIED BY THIS SURVEY.

ALL SET SSIB AND PB MONUMENTS WERE USED DUE TO LACK OF OVERBURDEN AND/OR PROXIMITY OF UNDERGROUND UTILITIES IN ACCORDANCE WITH SECTION 11 (4) OF O.Reg. 525/91.

ALL BEARINGS AND DISTANCES AGREE WITH P - REGISTERED PLAN 57M-812, UNLESS NOTED OTHERWISE.

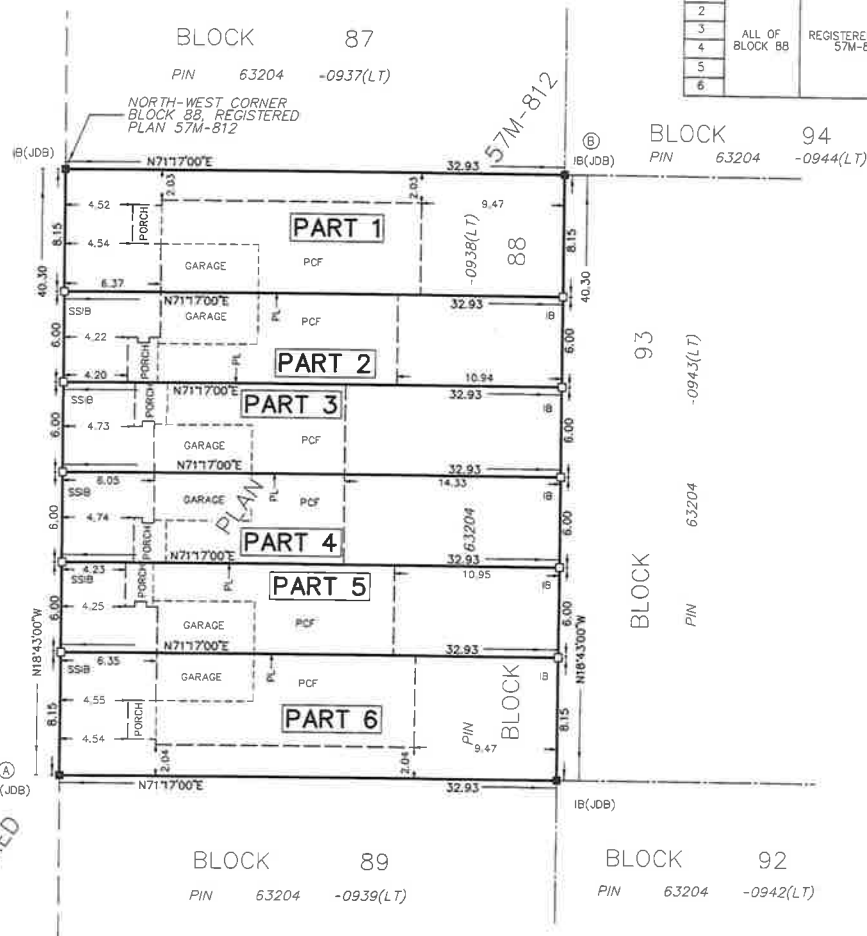
		<b>COE FISHER CAMERON</b>		SURVEYING LAND SURVEYORS A Division of J. D. Barnes Limited		SURVEYING MAPPING GIS			
3 COMMERCE PLACE, UNIT 201, LINDSAY, ON K9V 0N5 T: (705) 324-4152 F: (705) 324-8406 www.jdbarnes.com									
DRAWN BY: DBR		CHECKED BY: MAH		REFERENCE NO.: 17-17-355-20-87					
PLOTTED: 2/1/2023				DATED: 2/1/2023					

FILE: G:\17-17-355\20\Drawing\17-17-355-20-87.dgn



KEENAN STREET  
PIN 63204 -0973(LT)

REGISTERED



SCHEDULE				
PART	BLOCK	PLAN	PIN	AREA
1	ALL OF BLOCK 88	REGISTERED PLAN 57M-812	ALL OF 63204-0938(LT)	0.0268 Ha.
2				0.0198 Ha.
3				0.0198 Ha.
4				0.0198 Ha.
5				0.0198 Ha.
6				0.0268 Ha.

PLAN 57R-11059

Received and deposited

February 6<sup>th</sup>, 2023

Christopher Holloway

Representative for the  
Land Registrar for the  
Land Titles Division of  
Victoria (No.57)

PLAN OF SURVEY OF  
**BLOCK 88**  
**REGISTERED PLAN 57M-812**  
**CITY OF KAWARTHA LAKES**

SCALE 1 : 250

THE INTENDED PLOT SIZE OF THIS PLAN IS 457mm IN WIDTH BY 356mm IN HEIGHT WHEN PLOTTED AT A SCALE OF 1:250

COE FISHER CAMERON, A DIVISION OF J.D. BARNES LIMITED

**METRIC** DISTANCES AND/OR COORDINATES SHOWN ON THIS PLAN ARE IN METRES AND CAN BE CONVERTED TO FEET BY DIVIDING BY 0.3048.

**NOTES**

BEARINGS ARE UTM GRID, DERIVED FROM OBSERVED REFERENCE POINTS A AND B, BY REAL TIME NETWORK (RTN) OBSERVATIONS, UTM ZONE 17, NAD83 (CSRS) (2010.0).

DISTANCES ARE GROUND AND CAN BE CONVERTED TO GRID BY MULTIPLYING BY THE COMBINED SCALE FACTOR OF 0.999948.

**LEGEND**

■	DENOTES	SURVEY MONUMENT FOUND
□	DENOTES	SURVEY MONUMENT SET
SB	DENOTES	STANDARD IRON BAR
SSB	DENOTES	SHORT STANDARD IRON BAR
IB	DENOTES	IRON BAR
JDB	DENOTES	J.D. BARNES O.L.S. LTD.
PCF	DENOTES	POURED CONCRETE FOUNDATION
P	DENOTES	REGISTERED PLAN 57M-812
PL	DENOTES	PART LIMIT WITHIN DEMISING WALL

ALL BUILDING TIES ARE TAKEN TO CONCRETE FOUNDATION.

COMPLIANCE WITH ONTARIO BUILDING CODE SETBACK REQUIREMENTS ARE NOT VERIFIED BY THIS SURVEY.

ALL SET SSB AND PS MONUMENTS WERE USED DUE TO LACK OF OVERBURDEN AND/OR PROXIMITY OF UNDERGROUND UTILITIES IN ACCORDANCE WITH SECTION 11 (4) OF O.R.G. 525/91.

ALL BEARINGS AND DISTANCES AGREE WITH REGISTERED PLAN 57M-812, UNLESS NOTED OTHERWISE.

INTEGRATION DATA			
OBSERVED REFERENCE POINTS (ORPs): UTM ZONE 17, NAD83 (CSRS) (2010.0). COORDINATES TO URBAN ACCURACY PER SECTION 14 (2) OF O.R.G. 216/10.			
POINT ID	EASTING	NORTHING	
ORP (A)	678 195.65	4 913 847.70	
ORP (B)	678 213.91	4 913 896.44	
COORDINATES CANNOT, IN THEMSELVES, BE USED TO RE-ESTABLISH CORNERS OR BOUNDARIES SHOWN ON THIS PLAN.			
THE RESULTANT TIE BETWEEN ORP(A) AND ORP(B) IS 52.04m, N20°32'10"E			

**SURVEYOR'S CERTIFICATE**

I CERTIFY THAT:

- THIS SURVEY AND PLAN ARE CORRECT AND IN ACCORDANCE WITH THE SURVEYS ACT, THE SURVEYORS ACT AND THE LAND TITLES ACT AND THE REGULATIONS MADE UNDER THEM.
- THE SURVEY WAS COMPLETED ON THE 26th DAY OF SEPTEMBER, 2022.

FEBRUARY 1, 2023  
DATE

M. A. Hanna  
MARYNNA A. HANNA  
ONTARIO LAND SURVEYOR

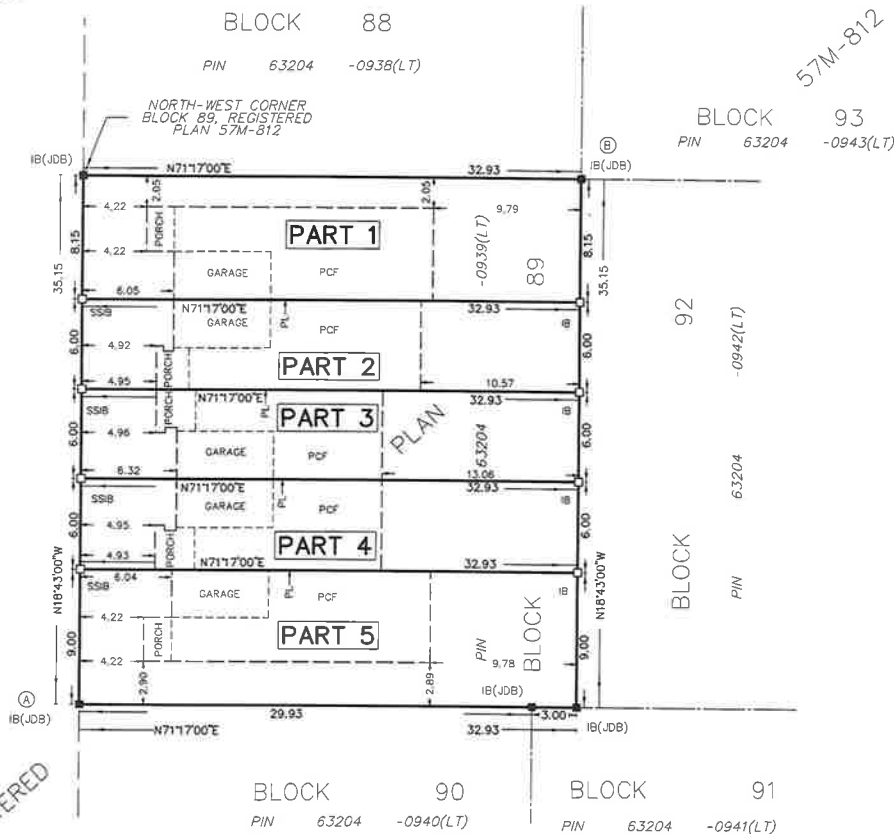
THIS PLAN OF SURVEY RELATES TO AOLS PLAN SUBMISSION FORM NUMBER 2161851

3 COMMERCE PLACE, UNIT 201, LINDSAY, ON K0V 0N5 T: (705) 324-4152 F: (705) 324-9406 www.jdbarnes.com		
DRAWN BY: DBR	CHECKED BY: MAH	REFERENCE NO.: 17-17-355-20-88
PLOTTED: 2/1/2023	DATED: 2/1/2023	

FILE: G:\17-17-355\20\Drawing\17-17-355-20-88.dgn



KEENAN STREET  
PIN 63204 -0973(LT)



REGISTERED

INTEGRATION DATA		
OBSERVED REFERENCE POINTS (ORPs): UTM ZONE 17, NAD83 (CSRS) (2010.0), COORDINATES TO URBAN ACCURACY PER SECTION 14 (2) OF OREG 216/10.		
POINT ID	EASTING	NORTHING
ORP (A)	678 206.93	4 913 814.41
ORP (B)	678 226.84	4 913 858.27
COORDINATES CANNOT, IN THEMSELVES, BE USED TO RE-ESTABLISH CORNERS OR BOUNDARIES SHOWN ON THIS PLAN.		
THE RESULTANT TIE BETWEEN ORP (A) AND ORP (B) IS 48.16m, N24°24'50"E		

#### SURVEYOR'S CERTIFICATE

- I CERTIFY THAT:
- THIS SURVEY AND PLAN ARE CORRECT AND IN ACCORDANCE WITH THE SURVEYS ACT, THE SURVEYORS ACT AND THE LAND TITLES ACT AND THE REGULATIONS MADE UNDER THEM.
  - THE SURVEY WAS COMPLETED ON THE 25th DAY OF NOVEMBER, 2022.

FEBRUARY 1, 2023  
DATE

*M. A. Hanna*  
MARY A. HANNA  
ONTARIO LAND SURVEYOR

THIS PLAN OF SURVEY RELATES TO AOLS PLAN SUBMISSION FORM NUMBER 2161858

#### SCHEDULE

PART	BLOCK	PLAN	PIN	AREA
1	ALL OF BLOCK 89	REGISTERED PLAN 57M-812	ALL OF 63204-0939(LT)	0.0268 Ha.
2				0.0198 Ha.
3				0.0198 Ha.
4				0.0198 Ha.
5				0.0296 Ha.

PLAN 57R-11058

Received and deposited

February 6<sup>th</sup>, 2023

Suzanne Iacovitti

Representative for the  
Land Registrar for the  
Land Titles Division of  
Victoria (No.57)

#### PLAN OF SURVEY OF BLOCK 89 REGISTERED PLAN 57M-812 CITY OF KAWARTHA LAKES

SCALE 1 : 250  
5 0 5 10 15 metres

THE INTENDED PLOT SIZE OF THIS PLAN IS 457mm IN WIDTH BY 356mm IN HEIGHT WHEN PLOTTED AT A SCALE OF 1:250

COE FISHER CAMERON, A DIVISION OF J.D. BARNES LIMITED

**METRIC** DISTANCES AND/OR COORDINATES SHOWN ON THIS PLAN ARE IN METRES AND CAN BE CONVERTED TO FEET BY DIVIDING BY 0.3048.

#### NOTES

BEARINGS ARE UTM GRID, DERIVED FROM OBSERVED REFERENCE POINTS A AND B, BY REAL TIME NETWORK (RTN) OBSERVATIONS, UTM ZONE 17, NAD83 (CSRS) (2010.0).

DISTANCES ARE GROUND AND CAN BE CONVERTED TO GRID BY MULTIPLYING BY THE COMBINED SCALE FACTOR OF 0.999948.

#### LEGEND

- DENOTES SURVEY MONUMENT FOUND
- DENOTES SURVEY MONUMENT SET
- SSB DENOTES STANDARD IRON BAR
- SSIB DENOTES SHORT STANDARD IRON BAR
- IB DENOTES IRON BAR
- JDB DENOTES J.D. BARNES O.L.S., LTD.
- PCF DENOTES POURED CONCRETE FOUNDATION
- PL DENOTES PART LIMIT WITHIN DEMISING WALL
- P DENOTES REGISTERED PLAN 57M-812

ALL BUILDING TIES ARE TAKEN TO CONCRETE FOUNDATION.

COMPLIANCE WITH ONTARIO BUILDING CODE SETBACK REQUIREMENTS ARE NOT VERIFIED BY THIS SURVEY.

ALL SET SSB AND PB MONUMENTS WERE USED DUE TO LACK OF OVERBURDEN AND/OR PROXIMITY OF UNDERGROUND UTILITIES IN ACCORDANCE WITH SECTION 11 (4) OF OREG. 525/91.

ALL BEARINGS AND DISTANCES AGREE WITH P - REGISTERED PLAN 57M-812, UNLESS NOTED OTHERWISE.



COE FISHER CAMERON

LAND SURVEYORS

A Division of

J. D. Barnes Limited

3 COMMERCE PLACE, UNIT 201, LINDSAY, ON K9V 0N5  
T: (705) 324-4152 F: (705) 324-9406 www.jdbarnes.com

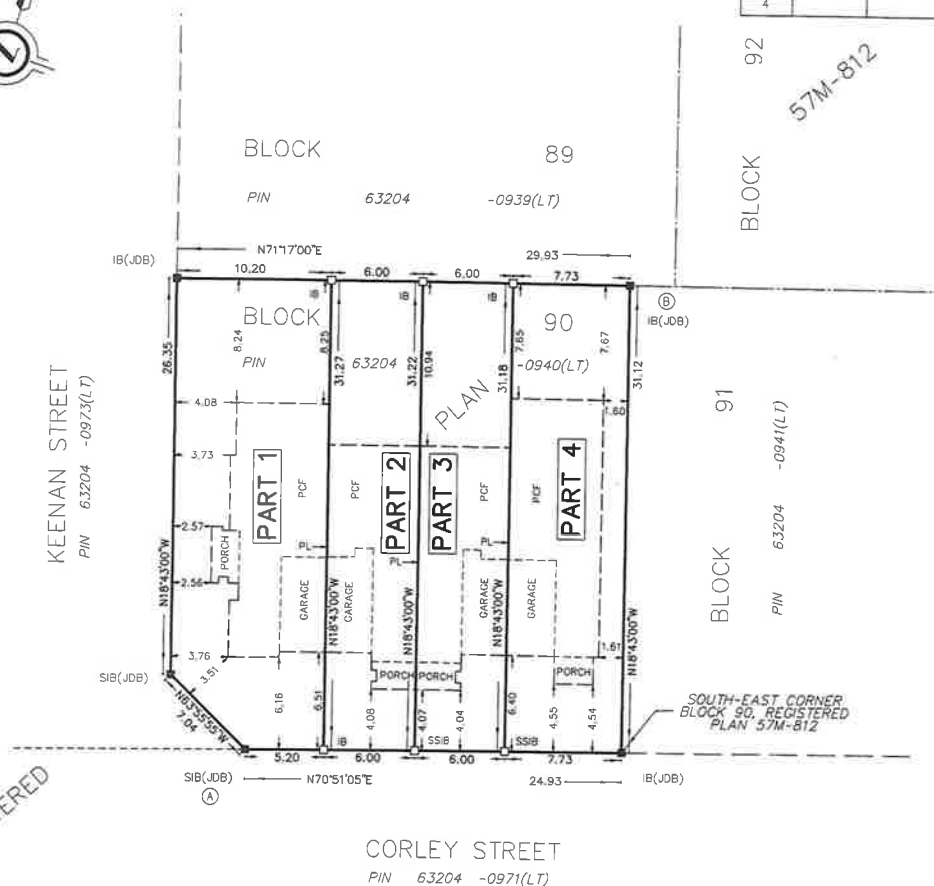
DRAWN BY: DBR	CHECKED BY: MAH	REFERENCE NO.: 17-17-355-20-89
PLOTTED: 2/1/2023		DATED: 2/1/2023

FILE: G:\17-17-355\20\Drawing\17-17-355-20-89.dgn



REGISTERED

INTEGRATION DATA		
OBSERVED REFERENCE POINTS (ORPs): UTM ZONE 17, NAD83 (CSRS) (2010.0), COORDINATES TO URBAN ACCURACY PER SECTION 14 (2) OF O. REG. 216/10.		
POINT ID	EASTING	NORTHING
ORP (A)	678 221.71	4 913 786.37
ORP (B)	678 235.28	4 913 824.02
COORDINATES CANNOT, IN THEMSELVES, BE USED TO RE-ESTABLISH CORNERS OR BOUNDARIES SHOWN ON THIS PLAN.		
THE RESULTANT TIE BETWEEN ORP (A) AND ORP (B) IS 40.02m, N19°48'40"E		



CORLEY STREET  
PIN 63204 -0971(LT)

#### SURVEYOR'S CERTIFICATE

- I CERTIFY THAT:
- THIS SURVEY AND PLAN ARE CORRECT AND IN ACCORDANCE WITH THE SURVEYS ACT, THE SURVEYORS ACT AND THE LAND TITLES ACT AND THE REGULATIONS MADE UNDER THEM.
  - THE SURVEY WAS COMPLETED ON THE 14th DAY OF SEPTEMBER, 2022.

FEBRUARY 1, 2023  
DATE

*M. A. Hanna*  
MARYNA A. HANNA  
ONTARIO LAND SURVEYOR

THIS PLAN OF SURVEY RELATES TO AOLS PLAN SUBMISSION FORM NUMBER 2151852

#### SCHEDULE

PART	BLOCK	PLAN	PIN	AREA
1	ALL OF BLOCK 90	REGISTERED PLAN 57M-812	ALL OF 63204-0940(LT)	0.0307 Ha.
2				0.0187 Ha.
3				0.0187 Ha.
4				0.0241 Ha.

PLAN 57R-11060

Received and deposited

February 6<sup>th</sup>, 2023

Suzanne Iacovitti

Representative for the  
Land Registrar for the  
Land Titles Division of  
Victoria (No.57)

#### PLAN OF SURVEY OF BLOCK 90 REGISTERED PLAN 57M-812 CITY OF KAWARTHA LAKES

SCALE 1 : 250



THE INTENDED PLOT SIZE OF THIS PLAN IS 457mm IN WIDTH BY 356mm IN HEIGHT WHEN PLOTTED AT A SCALE OF 1:250

COE FISHER CAMERON, A DIVISION OF J.D. BARNES LIMITED

**METRIC** DISTANCES AND/OR COORDINATES SHOWN ON THIS PLAN ARE IN METRES AND CAN BE CONVERTED TO FEET BY DIVIDING BY 0.3048.

#### NOTES

BEARINGS ARE UTM GRID, DERIVED FROM OBSERVED REFERENCE POINTS A AND B, BY REAL TIME NETWORK (RTN) OBSERVATIONS, UTM ZONE 17, NAD83 (CSRS) (2010.0).

DISTANCES ARE GROUND AND CAN BE CONVERTED TO GRID BY MULTIPLYING BY THE COMBINED SCALE FACTOR OF 0.999948.

#### LEGEND

■	DENOTES	SURVEY MONUMENT FOUND
□	DENOTES	SURVEY MONUMENT SET
SIB	DENOTES	STANDARD IRON BAR
SSIB	DENOTES	SHORT STANDARD IRON BAR
IB	DENOTES	IRON BAR
JOB	DENOTES	J.D. BARNES O.L.S. LTD.
PCF	DENOTES	POURED CONCRETE FOUNDATION
P	DENOTES	REGISTERED PLAN 57M-812
PL	DENOTES	PART LIMIT WITHIN DEMISING WALL

ALL BUILDING TIES ARE TAKEN TO CONCRETE FOUNDATION.

COMPLIANCE WITH ONTARIO BUILDING CODE SETBACK REQUIREMENTS ARE NOT VERIFIED BY THIS SURVEY.

ALL SET SSB AND PB MONUMENTS WERE USED DUE TO LACK OF OVERBURDEN AND/OR PROXIMITY OF UNDERGROUND UTILITIES IN ACCORDANCE WITH SECTION 11 (4) OF O. REG. 525/91.

ALL BEARINGS AND DISTANCES AGREE WITH P = REGISTERED PLAN 57M-812, UNLESS NOTED OTHERWISE.

	<b>COE FISHER CAMERON</b>		SURVEYING MAPPING GIS	
	LAND SURVEYORS A Division of <b>J. D. Barnes Limited</b>			
3 COMMERCE PLACE, UNIT 201, LINDSAY, ON K9V 0N5 T: (705) 324-1152 F: (705) 324-8406 www.jdbarnes.com				
DRAWN BY: DBR	CHECKED BY: MAH	REFERENCE NO.: 17-17-355-20-90		
PLOTTED: 2/1/2023	DATED: 2/1/2023			

FILE: G:\17-17-355\20\Drawing\17-17-355-20-90.dgn



BLOCK 89  
PIN 63204 -0939(LT)

BLOCK 92  
PIN 63204 -0942(LT)

SCHEDULE				
PART	BLOCK	PLAN	PIN	AREA
1	ALL OF BLOCK 91	REGISTERED PLAN 57M-812	ALL OF 63204-0941(LT)	0.0240 Ha
2				0.0186 Ha
3				0.0186 Ha
4				0.0186 Ha
5				0.0303 Ha

PLAN 57R-11067

Received and deposited

February 6<sup>th</sup>, 2023

Oyelami Alabata

Representative for the  
Land Registrar for the  
Land Titles Division of  
Victoria (No.57)



PLAN OF SURVEY OF  
**BLOCK 91**  
**REGISTERED PLAN 57M-812**  
**CITY OF KAWARTHA LAKES**

SCALE 1 : 250



THE INTENDED PLOT SIZE OF THIS PLAN IS 457mm IN WIDTH BY 356mm IN HEIGHT WHEN PLOTTED AT A SCALE OF 1:250

COE FISHER CAMERON, A DIVISION OF J.D. BARNES LIMITED

**METRIC** DISTANCES AND/OR COORDINATES SHOWN ON THIS PLAN ARE IN METRES AND CAN BE CONVERTED TO FEET BY DIVIDING BY 0.3048.

**NOTES**

BEARINGS ARE UTM GRID, DERIVED FROM OBSERVED REFERENCE POINTS A AND B, BY REAL TIME NETWORK (RTN) OBSERVATIONS, UTM ZONE 17, NAD83 (CSRS) (2010.0)

DISTANCES ARE GROUND AND CAN BE CONVERTED TO GRID BY MULTIPLYING BY THE COMBINED SCALE FACTOR OF 0.999948.

**LEGEND**

■	DENOTES	SURVEY MONUMENT FOUND
□	DENOTES	SURVEY MONUMENT SET
SB	DENOTES	STANDARD IRON BAR
SSIB	DENOTES	SHORT STANDARD IRON BAR
IB	DENOTES	IRON BAR
JOB	DENOTES	J.D. BARNES O.L.S. LTD.
PCF	DENOTES	POURED CONCRETE FOUNDATION
PL	DENOTES	PART LIMIT WITHIN DEMISING WALL
P	DENOTES	REGISTERED PLAN 57M-812

ALL BUILDING TIES ARE TAKEN TO CONCRETE FOUNDATION.

COMPLIANCE WITH ONTARIO BUILDING CODE SETBACK REQUIREMENTS ARE NOT VERIFIED BY THIS SURVEY.

ALL SET SSIB AND PB MONUMENTS WERE USED DUE TO LACK OF OVERBURDEN AND/OR PROXIMITY OF UNDERGROUND UTILITIES IN ACCORDANCE WITH SECTION 11 (4) OF O. REG. 525/91.

ALL BEARINGS AND DISTANCES AGREE WITH P - REGISTERED PLAN 57M-812, UNLESS NOTED OTHERWISE.

**INTEGRATION DATA**

OBSERVED REFERENCE POINTS (ORPs): UTM ZONE 17, NAD83 (CSRS) (2010.0). COORDINATES TO URBAN ACCURACY PER SECTION 14 (2) OF O. REG. 216/10.

POINT ID	EASTING	NORTHING
ORP (A)	678 245.26	4 913 794.54
ORP (B)	678 269.30	4 913 835.55

COORDINATES CANNOT, IN THEMSELVES, BE USED TO RE-ESTABLISH CORNERS OR BOUNDARIES SHOWN ON THIS PLAN.

THE RESULTANT TIE BETWEEN ORP (A) AND ORP (B) IS 47.53m, N30°23'10\"/>

**SURVEYOR'S CERTIFICATE**

I CERTIFY THAT:

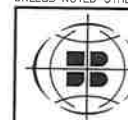
1. THIS SURVEY AND PLAN ARE CORRECT AND IN ACCORDANCE WITH THE SURVEYS ACT, THE SURVEYORS ACT AND THE LAND TITLES ACT AND THE REGULATIONS MADE UNDER THEM.

2. THE SURVEY WAS COMPLETED ON THE 12<sup>th</sup> DAY OF DECEMBER, 2022.

FEBRUARY 1, 2023  
DATE

*M. A. Hanna*  
MARYNA HANNA  
ONTARIO LAND SURVEYOR

THIS PLAN OF SURVEY RELATES TO AOLS PLAN SUBMISSION FORM NUMBER 2161877



**COE FISHER CAMERON**

LAND SURVEYORS

A Division of

**J. D. Barnes Limited**

3 COMMERCIAL PLACE, UNIT 301, LINDSAY, ON K9V 6N5  
T: (705) 324-4152 F: (705) 324-8406 www.jdbarnes.com

DRAWN BY:	DBR	CHECKED BY:	MAH	REFERENCE NO.:	17-17-355-20-91
PLOTTED:	2/1/2023	DATED:	2/1/2023		

FILE: G:\17-17-355\20\Drawing\17-17-355-20-91.dgn





BLOCK 88  
PIN 63204 -0938(LT)

BLOCK 93  
PIN 63204 -0943(LT)

BLOCK 89  
PIN 63204 -0939(LT)

BLOCK 91  
PIN 63204 -0941(LT)

REGISTERED BLOCK 90

NORTH-WEST CORNER  
BLOCK 92, REGISTERED  
PLAN No. 57M-812  
N71°17'00"E

57M-812

CORLEY STREET  
PIN 63204 -0971(LT)

SCHEDULE				
PART	BLOCK	PLAN	PIN	AREA
1	ALL OF BLOCK 92	REGISTERED PLAN 57M-812	ALL OF 63204-0942(LT)	0.0296 Ha.
2				0.0198 Ha.
3				0.0198 Ha.
4				0.0198 Ha.
5				0.0268 Ha.

PLAN 57R-11071

Received and deposited

February 6<sup>th</sup>, 2023

April Sarkany

Representative for the  
Land Registrar for the  
Land Titles Division of  
Victoria (No.57)

PLAN OF SURVEY OF  
**BLOCK 92**  
**REGISTERED PLAN 57M-812**  
**CITY OF KAWARTHA LAKES**

SCALE 1 : 250

THE INTENDED PLOT SIZE OF THIS PLAN IS 457mm IN WIDTH BY 356mm IN HEIGHT  
WHEN PLOTTED AT A SCALE OF 1:250

COE FISHER CAMERON, A DIVISION OF J.D. BARNES LIMITED

**METRIC** DISTANCES AND/OR COORDINATES SHOWN ON THIS PLAN ARE IN  
METRES AND CAN BE CONVERTED TO FEET BY DIVIDING BY 0.3048.

**NOTES**

BEARINGS ARE UTM GRID, DERIVED FROM OBSERVED REFERENCE POINTS A AND B,  
BY REAL TIME NETWORK (RTN) OBSERVATIONS, UTM ZONE 17, NAD83 (CSRS)  
(2010.0)

DISTANCES ARE GROUND AND CAN BE CONVERTED TO GRID BY MULTIPLYING BY  
THE COMBINED SCALE FACTOR OF 0.999948.

**LEGEND**

■	DENOTES	SURVEY MONUMENT FOUND
□	DENOTES	SURVEY MONUMENT SET
SB	DENOTES	STANDARD IRON BAR
SSIB	DENOTES	SHORT STANDARD IRON BAR
IB	DENOTES	IRON BAR
JOB	DENOTES	J.D. BARNES O.L.S. LTD.
PCF	DENOTES	POURED CONCRETE FOUNDATION
PL	DENOTES	PART LIMIT WITHIN DEMISING WALL
P	DENOTES	REGISTERED PLAN 57M-812

ALL BUILDING TIES ARE TAKEN TO CONCRETE FOUNDATION.

COMPLIANCE WITH ONTARIO BUILDING CODE SETBACK REQUIREMENTS ARE  
NOT VERIFIED BY THIS SURVEY.

ALL SET SSIB AND PB MONUMENTS WERE USED DUE TO LACK OF OVERBURDEN  
AND/OR PROXIMITY OF UNDERGROUND UTILITIES IN ACCORDANCE WITH  
SECTION 11 (4) OF O.R.E.G. 525/91.

ALL BEARINGS AND DISTANCES AGREE WITH P - REGISTERED PLAN 57M-812,  
UNLESS NOTED OTHERWISE.

**INTEGRATION DATA**

OBSERVED REFERENCE POINTS (ORPs): UTM ZONE 17, NAD83 (CSRS) (2010.0),  
COORDINATES TO URBAN ACCURACY PER SECTION 14 (2) OF O.R.E.G. 216/10.

POINT ID	EASTING	NORTHING
ORP (A)	678 238.12	4 913 824.98
ORP (B)	678 258.03	4 913 868.84

COORDINATES CANNOT, IN THEMSELVES, BE USED TO RE-ESTABLISH  
CORNERS OR BOUNDARIES SHOWN ON THIS PLAN.

THE RESULTANT TIE BETWEEN ORP (A) AND ORP (B) IS 48.16m, N24°2'35"E

**SURVEYOR'S CERTIFICATE**

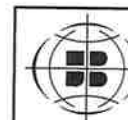
I CERTIFY THAT:

- THIS SURVEY AND PLAN ARE CORRECT AND IN ACCORDANCE WITH THE SURVEYS  
ACT, THE SURVEYORS ACT AND THE LAND TITLES ACT AND THE REGULATIONS  
MADE UNDER THEM.
- THE SURVEY WAS COMPLETED ON THE 25th DAY OF OCTOBER, 2022.

FEBRUARY 1, 2023  
DATE

THIS PLAN OF SURVEY RELATES TO AOLS PLAN SUBMISSION FORM NUMBER 2161853

*M. A. Hanna*  
MARVIN K. HANNA  
ONTARIO LAND SURVEYOR



**COE FISHER CAMERON**

LAND SURVEYORS

A Division of

J. D. Barnes Limited

3 COMMERCE PLACE, UNIT 201, LINDSAY, ON K9V 0N5  
T: (705) 324-4152 F: (705) 324-8406 www.jdbarnes.com

DRAWN BY: DBR	CHECKED BY: MAH	REFERENCE NO.: 17-17-355-20-92
PLOTTED: 2/1/2023	DATED: 2/1/2023	

FILE: G:\17-17-355\20\Drawing\17-17-355-20-92.dgn



BLOCK 87  
PIN 63204 -0937(LT)

BLOCK 94  
PIN 63204 -0944(LT)

BLOCK 88  
PIN 63204 -0938(LT)

REGISTERED

BLOCK 89  
PIN 63204 -0939(LT)

BLOCK 92  
PIN 63204 -0942(LT)

INTEGRATION DATA		
OBSERVED REFERENCE POINTS (ORPs): UTM ZONE 17, NAD83 (CSRS) (2010.0), COORDINATES TO URBAN ACCURACY PER SECTION 14 (2) OF OREG 216/10.		
POINT ID	EASTING	NORTHING
ORP (A)	678 226.84	4 913 858.27
ORP (B)	678 245.09	4 913 907.00
COORDINATES CANNOT, IN THEMSELVES, BE USED TO RE-ESTABLISH CORNERS OR BOUNDARIES SHOWN ON THIS PLAN.		
THE RESULTANT TIE BETWEEN ORP (A) AND ORP (B) IS 52.04m, N20°31'55"E		

#### SURVEYOR'S CERTIFICATE

- I CERTIFY THAT:
- THIS SURVEY AND PLAN ARE CORRECT AND IN ACCORDANCE WITH THE SURVEYS ACT, THE SURVEYORS ACT AND THE LAND TITLES ACT AND THE REGULATIONS MADE UNDER THEM.
  - THE SURVEY WAS COMPLETED ON THE 5th DAY OF DECEMBER, 2022.

FEBRUARY 1, 2023  
DATE

THIS PLAN OF SURVEY RELATES TO AOLS PLAN SUBMISSION FORM NUMBER 2161859

SCHEDULE				
PART	BLOCK	PLAN	PIN	AREA
1	ALL OF BLOCK 93	REGISTERED PLAN 57M-812	ALL OF 63204-0943(LT)	0.0268 Ha.
2				0.0198 Ha.
3				0.0198 Ha.
4				0.0198 Ha.
5				0.0198 Ha.
6				0.0268 Ha.

PLAN 57R-11068

Received and deposited

February 6<sup>th</sup>, 2023

Oyelami Alabata

Representative for the  
Land Registrar for the  
Land Titles Division of  
Victoria (No.57)

57M-812

CORLEY STREET  
PIN 63204 -0971(LT)

PLAN OF SURVEY OF  
BLOCK 93  
REGISTERED PLAN 57M-812  
CITY OF KAWARTHA LAKES  
SCALE 1 : 250



THE INTENDED PLOT SIZE OF THIS PLAN IS 457mm IN WIDTH BY 356mm IN HEIGHT WHEN PLOTTED AT A SCALE OF 1:250.

COE FISHER CAMERON, A DIVISION OF J.D. BARNES LIMITED

METRIC DISTANCES AND/OR COORDINATES SHOWN ON THIS PLAN ARE IN METRES AND CAN BE CONVERTED TO FEET BY DIVIDING BY 0.3048.

#### NOTES

BEARINGS ARE UTM GRID, DERIVED FROM OBSERVED REFERENCE POINTS A AND B, BY REAL TIME NETWORK (RTN) OBSERVATIONS, UTM ZONE 17, NAD83 (CSRS) (2010.0).

DISTANCES ARE GROUND AND CAN BE CONVERTED TO GRID BY MULTIPLYING BY THE COMBINED SCALE FACTOR OF 0.999948.

#### LEGEND

■	DENOTES	SURVEY MONUMENT FOUND
□	DENOTES	SURVEY MONUMENT SET
▣	DENOTES	STANDARD IRON BAR
SSIB	DENOTES	SHORT STANDARD IRON BAR
IB	DENOTES	IRON BAR
JOB	DENOTES	J.D. BARNES O.L.S., LTD.
PCF	DENOTES	POURED CONCRETE FOUNDATION
PL	DENOTES	PART LIMIT WITHIN DEMISING WALL
P	DENOTES	REGISTERED PLAN 57M-812

ALL BUILDING TIES ARE TAKEN TO CONCRETE FOUNDATION.

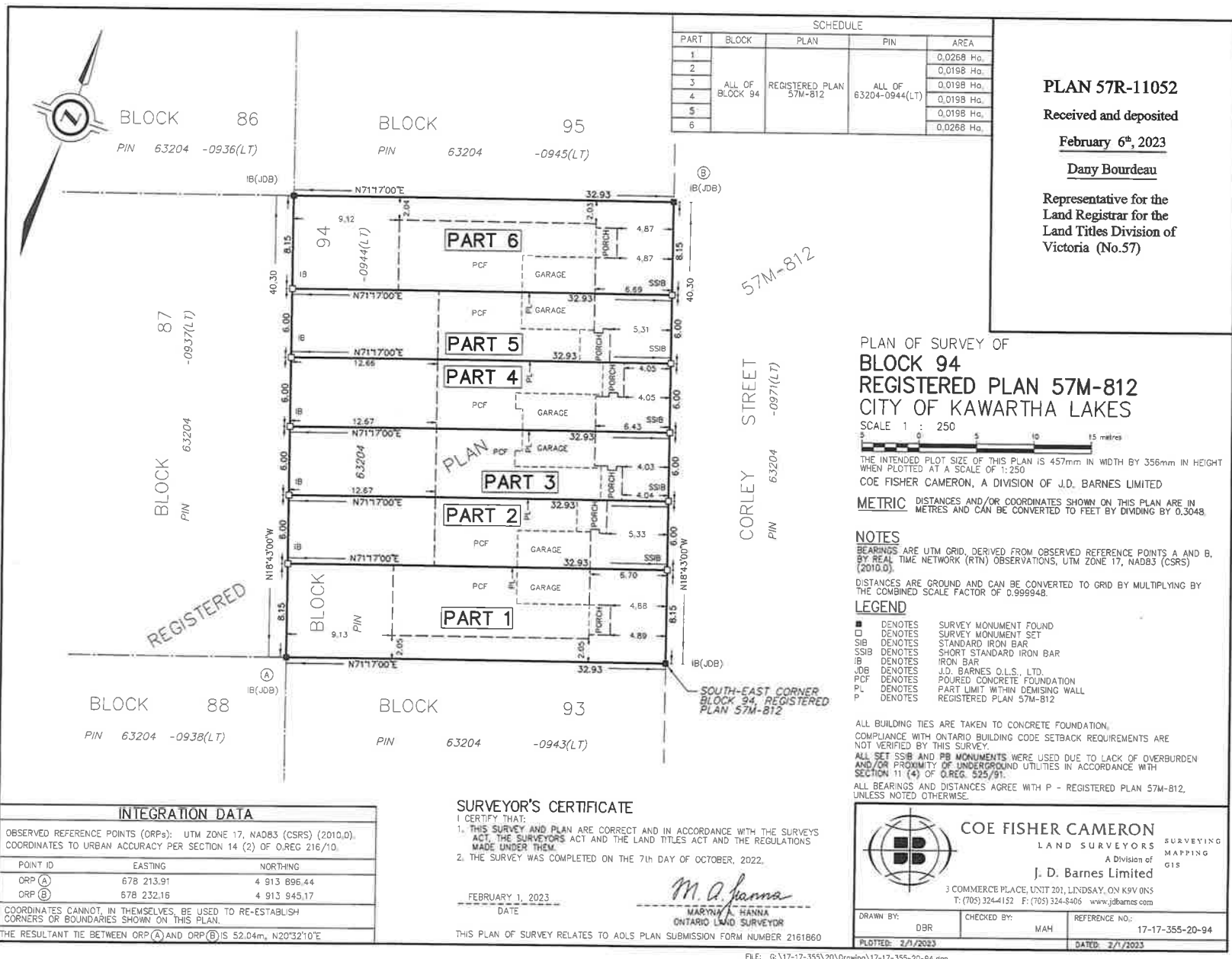
COMPLIANCE WITH ONTARIO BUILDING CODE SETBACK REQUIREMENTS ARE NOT VERIFIED BY THIS SURVEY.

ALL SET SSIB AND PB MONUMENTS WERE USED DUE TO LACK OF OVERBURDEN AND/OR PROXIMITY OF UNDERGROUND UTILITIES IN ACCORDANCE WITH SECTION 11 (4) OF OREG. 525/91.

ALL BEARINGS AND DISTANCES AGREE WITH P - REGISTERED PLAN 57M-812, UNLESS NOTED OTHERWISE.

		<b>COE FISHER CAMERON</b>	
LAND SURVEYORS		A Division of	
J. D. Barnes Limited		3 COMMERCE PLACE, UNIT 201, LINDSAY, ON K9V 0N5	
T: (705) 324-4152 F: (705) 324-8406 www.jobarnes.com		DRAWN BY: DBR	
CHECKED BY: MAH		REFERENCE NO: 17-17-355-20-93	
PLOTTED: 2/1/2023		DATED: 2/1/2023	

FILE: G:\17-17-355\20\Drawing\17-17-355-20-93.dgn



PLAN 57R-11052

Received and deposited

February 6<sup>th</sup>, 2023

Dany Bourdeau

Representative for the  
Land Registrar for the  
Land Titles Division of  
Victoria (No.57)

PLAN OF SURVEY OF  
**BLOCK 94**  
**REGISTERED PLAN 57M-812**  
**CITY OF KAWARTHA LAKES**

SCALE 1 : 250

THE INTENDED PLOT SIZE OF THIS PLAN IS 457mm IN WIDTH BY 356mm IN HEIGHT WHEN PLOTTED AT A SCALE OF 1:250

COE FISHER CAMERON, A DIVISION OF J.D. BARNES LIMITED

**METRIC** DISTANCES AND/OR COORDINATES SHOWN ON THIS PLAN ARE IN METRES AND CAN BE CONVERTED TO FEET BY DIVIDING BY 0.3048.

**NOTES**

BEARINGS ARE UTM GRID, DERIVED FROM OBSERVED REFERENCE POINTS A AND B, BY REAL TIME NETWORK (RTN) OBSERVATIONS, UTM ZONE 17, NAD83 (CSRS) (2010.0).

DISTANCES ARE GROUND AND CAN BE CONVERTED TO GRID BY MULTIPLYING BY THE COMBINED SCALE FACTOR OF 0.999948.

**LEGEND**

- DENOTES SURVEY MONUMENT FOUND
- DENOTES SURVEY MONUMENT SET
- SIB DENOTES STANDARD IRON BAR
- SSIB DENOTES SHORT STANDARD IRON BAR
- IB DENOTES IRON BAR
- JB DENOTES J.D. BARNES O.L.S. LTD.
- PCF DENOTES POURED CONCRETE FOUNDATION
- PL DENOTES PART LIMIT WITHIN DEMISING WALL
- P DENOTES REGISTERED PLAN 57M-812

ALL BUILDING TIES ARE TAKEN TO CONCRETE FOUNDATION, COMPLIANCE WITH ONTARIO BUILDING CODE SETBACK REQUIREMENTS ARE NOT VERIFIED BY THIS SURVEY.

ALL SET SSIB AND PB MONUMENTS WERE USED DUE TO LACK OF OVERBURDEN AND/OR PROXIMITY OF UNDERGROUND UTILITIES IN ACCORDANCE WITH SECTION 11 (4) OF OREG. 525/91.

ALL BEARINGS AND DISTANCES AGREE WITH P - REGISTERED PLAN 57M-812, UNLESS NOTED OTHERWISE.

**INTEGRATION DATA**

OBSERVED REFERENCE POINTS (ORPs): UTM ZONE 17, NAD83 (CSRS) (2010.0), COORDINATES TO URBAN ACCURACY PER SECTION 14 (2) OF OREG 216/10.

POINT ID	EASTING	NORTHING
ORP (A)	678 213.91	4 913 896.44
ORP (B)	678 232.16	4 913 945.17

COORDINATES CANNOT, IN THEMSELVES, BE USED TO RE-ESTABLISH CORNERS OR BOUNDARIES SHOWN ON THIS PLAN.

THE RESULTANT TIE BETWEEN ORP (A) AND ORP (B) IS 52.04m, N20°32'10"E

**SURVEYOR'S CERTIFICATE**

I CERTIFY THAT:


1. THIS SURVEY AND PLAN ARE CORRECT AND IN ACCORDANCE WITH THE SURVEYS ACT, THE SURVEYORS ACT AND THE LAND TITLES ACT AND THE REGULATIONS MADE UNDER THEM.

2. THE SURVEY WAS COMPLETED ON THE 7th DAY OF OCTOBER, 2022.

FEBRUARY 1, 2023  
DATE

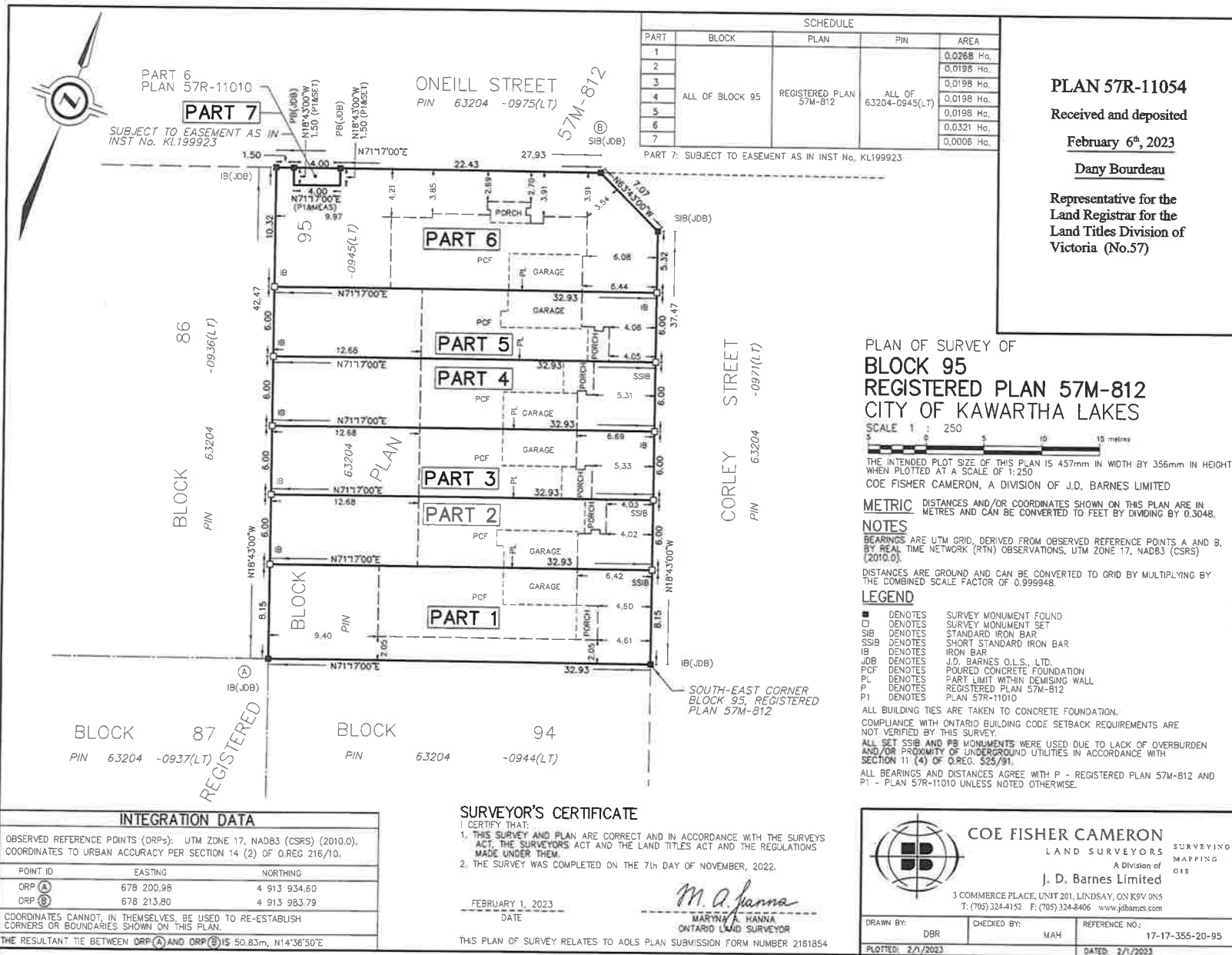
*M. A. Hanna*  
MARYAN A. HANNA  
ONTARIO LAND SURVEYOR

THIS PLAN OF SURVEY RELATES TO AOLS PLAN SUBMISSION FORM NUMBER 2161860



**COE FISHER CAMERON**  
LAND SURVEYORS  
A Division of  
**J. D. Barnes Limited**  
3 COMMERCE PLACE, UNIT 201, LINDSAY, ON K9V 0N5  
T: (705) 324-1152 F: (705) 324-9406 www.jdbarnes.com

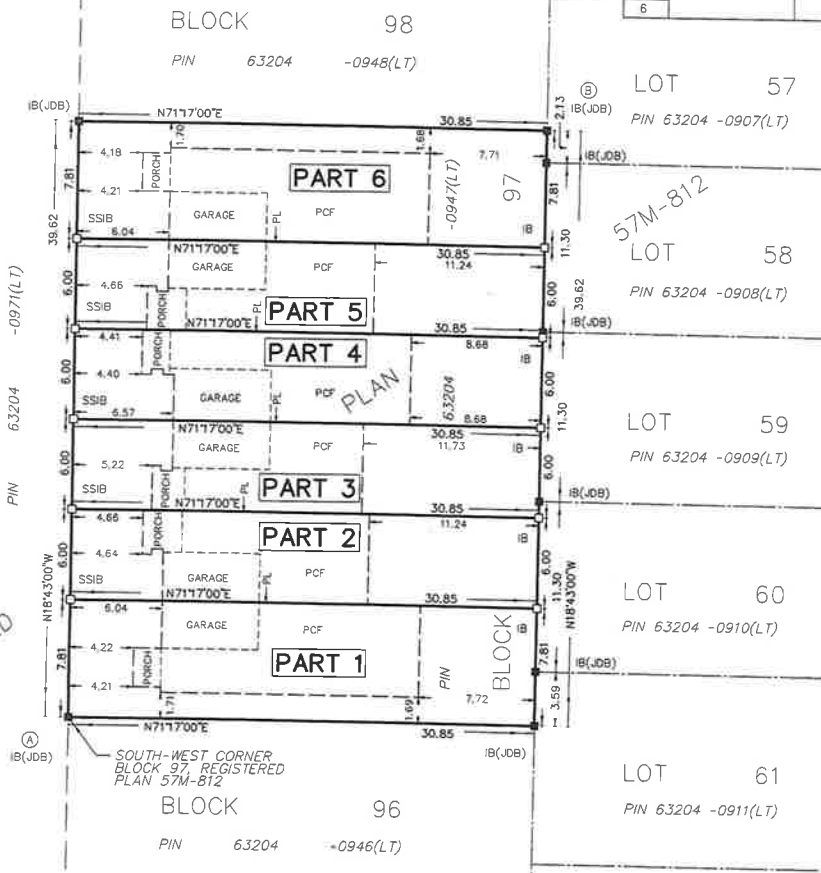
DRAWN BY: DBR	CHECKED BY: MAH	REFERENCE NO.: 17-17-355-20-94
PLOTTED: 2/1/2023	DATED: 2/1/2023	





REGISTERED

CORLEY STREET  
PIN 63204 -0971(LT)



SCHEDULE				
PART	BLOCK	PLAN	PIN	AREA
1	ALL OF BLOCK 97	REGISTERED PLAN 57M-812	ALL OF 63204-0947(LT)	0.0241 Ha.
2				0.0185 Ha.
3				0.0185 Ha.
4				0.0185 Ha.
5				0.0185 Ha.
6				0.0241 Ha.

PLAN 57R-11056

Received and deposited

February 6<sup>th</sup>, 2023

Dany Bourdeau

Representative for the  
Land Registrar for the  
Land Titles Division of  
Victoria (No.57)

PLAN OF SURVEY OF  
**BLOCK 97**  
**REGISTERED PLAN 57M-812**  
**CITY OF KAWARTHA LAKES**

SCALE 1 : 250



THE INTENDED PLOT SIZE OF THIS PLAN IS 457mm IN WIDTH BY 356mm IN HEIGHT  
WHEN PLOTTED AT A SCALE OF 1:250

COE FISHER CAMERON, A DIVISION OF J.D. BARNES LIMITED

**METRIC** DISTANCES AND/OR COORDINATES SHOWN ON THIS PLAN ARE IN  
METRES AND CAN BE CONVERTED TO FEET BY DIVIDING BY 0.3048.

**NOTES**

BEARINGS ARE UTM GRID, DERIVED FROM OBSERVED REFERENCE POINTS A AND B.  
BY REAL TIME NETWORK (RTN) OBSERVATIONS, UTM ZONE 17, NAD83 (CSRS)  
(2010.0).

DISTANCES ARE GROUND AND CAN BE CONVERTED TO GRID BY MULTIPLYING BY  
THE COMBINED SCALE FACTOR OF 0.9999948.

**LEGEND**

■	DENOTES	SURVEY MONUMENT FOUND
□	DENOTES	SURVEY MONUMENT SET
▣	DENOTES	STANDARD IRON BAR
▤	DENOTES	SHORT STANDARD IRON BAR
▥	DENOTES	IRON BAR
▦	DENOTES	J.D. BARNES O.L.S., LTD.
▧	DENOTES	POURED CONCRETE FOUNDATION
▨	DENOTES	PART LIMIT WITHIN DEMISING WALL
▩	DENOTES	REGISTERED PLAN 57M-812

ALL BUILDING TIES ARE TAKEN TO CONCRETE FOUNDATION.

COMPLIANCE WITH ONTARIO BUILDING CODE SETBACK REQUIREMENTS ARE  
NOT VERIFIED BY THIS SURVEY.

ALL SET SSIB AND PB MONUMENTS WERE USED DUE TO LACK OF OVERBURDEN  
AND/OR PROXIMITY OF UNDERGROUND UTILITIES IN ACCORDANCE WITH  
SECTION 11 (4) OF O. REG. 525/91.

ALL BEARINGS AND DISTANCES AGREE WITH P - REGISTERED PLAN 57M-812,  
UNLESS NOTED OTHERWISE.

**INTEGRATION DATA**

OBSERVED REFERENCE POINTS (ORPs): UTM ZONE 17, NAD83 (CSRS) (2010.0).  
COORDINATES TO URBAN ACCURACY PER SECTION 14 (2) OF O. REG 216/10.

POINT ID	EASTING	NORTHING
ORP (A)	678 293.51	4 913 826.43
ORP (B)	678 310.01	4 913 873.85

COORDINATES CANNOT, IN THEMSELVES, BE USED TO RE-ESTABLISH  
CORNERS OR BOUNDARIES SHOWN ON THIS PLAN.

THE RESULTANT TIE BETWEEN ORP (A) AND ORP (B) IS 50.21m, N19°11'20"E

**SURVEYOR'S CERTIFICATE**

I CERTIFY THAT:

- THIS SURVEY AND PLAN ARE CORRECT AND IN ACCORDANCE WITH THE SURVEYS  
ACT, THE SURVEYORS ACT AND THE LAND TITLES ACT AND THE REGULATIONS  
MADE UNDER THEM.
- THE SURVEY WAS COMPLETED ON THE 4th DAY OF SEPTEMBER, 2022.

FEBRUARY 1, 2023  
DATE

*M. A. Hanna*  
MARY A. HANNA  
ONTARIO LAND SURVEYOR

THIS PLAN OF SURVEY RELATES TO AOLS PLAN SUBMISSION FORM NUMBER 2161880



**COE FISHER CAMERON**

LAND SURVEYORS

A Division of

**J. D. Barnes Limited**

3 COMMERCE PLACE, UNIT 201, LINDSAY, ON K9V 0N5  
T: (705) 324-4152 F: (705) 324-8406 www.jdbarnes.com

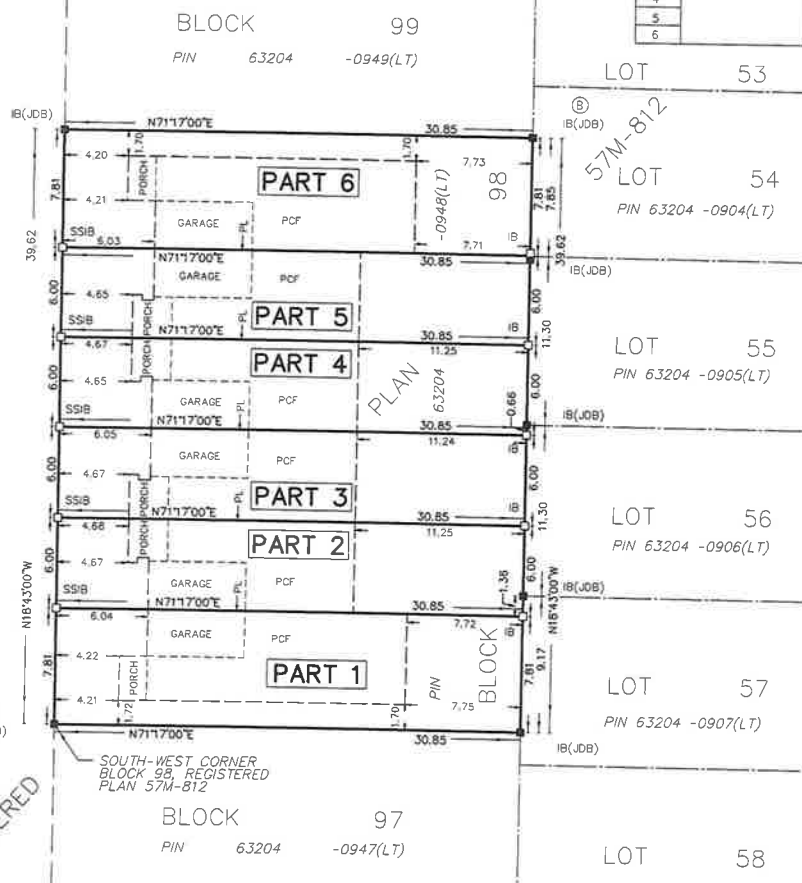
DRAWN BY:	DBR	CHECKED BY:	MAH	REFERENCE NO.:	17-17-355-20-97
PLOTTED:	2/1/2023	DATED:	2/1/2023		

FILE: G:\17-17-355\20\Drawing\17-17-355-20-97.dgn



CORLEY STREET  
P/N 63204 -0971(LT)

REGISTERED



BLOCK 99  
PIN 63204 -0949(LT)

LOT 53

57M-812  
LOT 54  
PIN 63204 -0904(LT)

LOT 55  
PIN 63204 -0905(LT)

LOT 56  
PIN 63204 -0906(LT)

LOT 57  
PIN 63204 -0907(LT)

LOT 58

BLOCK 97  
PIN 63204 -0947(LT)

SOUTH-WEST CORNER  
BLOCK 98, REGISTERED  
PLAN 57M-812

SCHEDULE				
PART	BLOCK	PLAN	PIN	AREA
1	ALL OF BLOCK 98	REGISTERED PLAN 57M-812	ALL OF 63204-0948(LT)	0.0241 Ha.
2				0.0185 Ha.
3				0.0185 Ha.
4				0.0185 Ha.
5				0.0185 Ha.
6				0.0241 Ha.

PLAN 57R-11069

Received and deposited

February 6<sup>th</sup>, 2023

Oyelami Alabata

Representative for the  
Land Registrar for the  
Land Titles Division of  
Victoria (No.57)

PLAN OF SURVEY OF  
**BLOCK 98**  
**REGISTERED PLAN 57M-812**  
**CITY OF KAWARTHA LAKES**

SCALE 1 : 250

THE INTENDED PLOT SIZE OF THIS PLAN IS 457mm IN WIDTH BY 356mm IN HEIGHT  
WHEN PLOTTED AT A SCALE OF 1:250

COE FISHER CAMERON, A DIVISION OF J.D. BARNES LIMITED

**METRIC** DISTANCES AND/OR COORDINATES SHOWN ON THIS PLAN ARE IN  
METRES AND CAN BE CONVERTED TO FEET BY DIVIDING BY 0.3048.

**NOTES**

BEARINGS ARE UTM GRID, DERIVED FROM OBSERVED REFERENCE POINTS A AND B.  
BY REAL TIME NETWORK (RTN) OBSERVATIONS, UTM ZONE 17, NAD83 (CSRS) (2010.0).

DISTANCES ARE GROUND AND CAN BE CONVERTED TO GRID BY MULTIPLYING BY  
THE COMBINED SCALE FACTOR OF 0.999948.

**LEGEND**

■	DENOTES	SURVEY MONUMENT FOUND
□	DENOTES	SURVEY MONUMENT SET
▣	DENOTES	STANDARD IRON BAR
SSIB	DENOTES	SHORT STANDARD IRON BAR
IB	DENOTES	IRON BAR
JOB	DENOTES	J.D. BARNES O.L.S. LTD.
PCF	DENOTES	POURED CONCRETE FOUNDATION
PL	DENOTES	PART LIMIT WITHIN DEMISING WALL
P	DENOTES	REGISTERED PLAN 57M-812

ALL BUILDING TIES ARE TAKEN TO CONCRETE FOUNDATION.

COMPLIANCE WITH ONTARIO BUILDING CODE SETBACK REQUIREMENTS ARE  
NOT VERIFIED BY THIS SURVEY.

ALL SET SSIB AND PB MONUMENTS WERE USED DUE TO LACK OF OVERBURDEN  
AND/OR PROXIMITY OF UNDERGROUND UTILITIES IN ACCORDANCE WITH  
SECTION 11 (4) OF O. REG. 525/91.

ALL BEARINGS AND DISTANCES AGREE WITH P - REGISTERED PLAN 57M-812,  
UNLESS NOTED OTHERWISE.

**INTEGRATION DATA**

OBSERVED REFERENCE POINTS (ORPs): UTM ZONE 17, NAD83 (CSRS) (2010.0),  
COORDINATES TO URBAN ACCURACY PER SECTION 14 (2) OF O. REG 216/10.

POINT ID	EASTING	NORTHING
ORP (A)	678 280.80	4 913 863.96
ORP (B)	678 297.30	4 913 911.38

COORDINATES CANNOT, IN THEMSELVES, BE USED TO RE-ESTABLISH  
CORNERS OR BOUNDARIES SHOWN ON THIS PLAN.

THE RESULTANT TIE BETWEEN ORP (A) AND ORP (B) IS 50.21m, N197°12'0"E

**SURVEYOR'S CERTIFICATE**

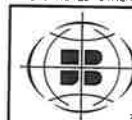
I CERTIFY THAT:

- THIS SURVEY AND PLAN ARE CORRECT AND IN ACCORDANCE WITH THE SURVEYS  
ACT, THE SURVEYORS ACT AND THE LAND TITLES ACT AND THE REGULATIONS  
MADE UNDER THEM.
- THE SURVEY WAS COMPLETED ON THE 5th DAY OF DECEMBER, 2022.

FEBRUARY 1, 2023  
DATE

*M. A. Hanna*  
MARYIA HANNA  
ONTARIO LAND SURVEYOR

THIS PLAN OF SURVEY RELATES TO AOLS PLAN SUBMISSION FORM NUMBER 2161861



**COE FISHER CAMERON**

LAND SURVEYORS

A Division of

J. D. Barnes Limited

3 COMMERCE PLACE, UNIT 201, LINDSAY, ON K9V 0N5  
T: (705) 324-4152 F: (705) 324-8406 www.jdbarnes.com

DRAWN BY:	DBR	CHECKED BY:	MAH	REFERENCE NO:	17-17-355-20-98
PLOTTED:	2/1/2023	DATED:	2/1/2023		

FILE: G:\17-17-355\20\Drawing\17-17-355-20-98.dgn

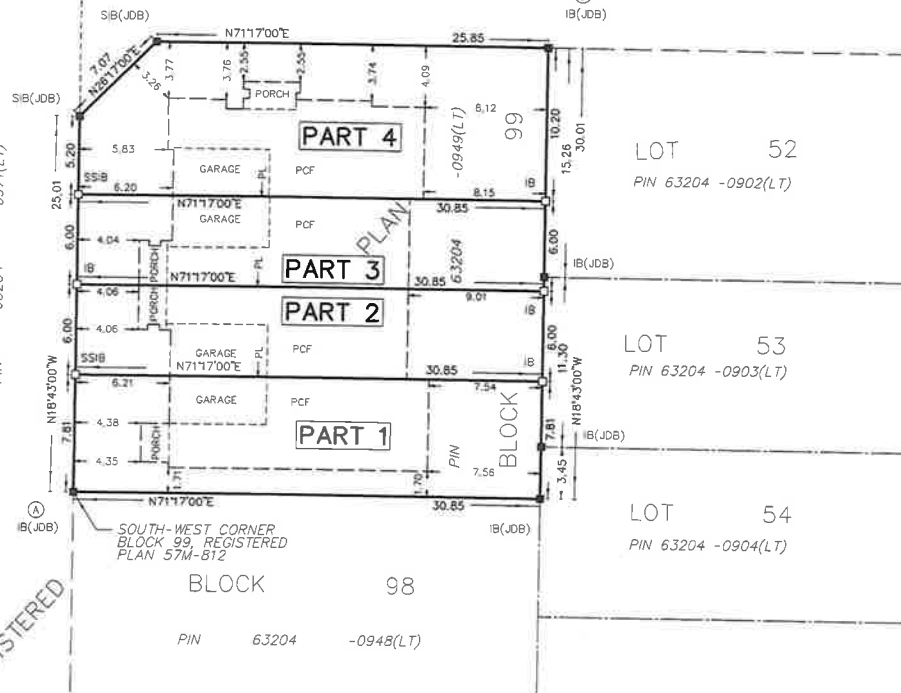


CORLEY STREET  
PIN 63204 -0971(LT)

WARNER GATE  
PIN 63204 -0977(LT)

57M-812  
IB(JDB)

REGISTERED



SCHEDULE				
PART	BLOCK	PLAN	PIN	AREA
1	ALL OF BLOCK 99	REGISTERED PLAN 57M-812	ALL OF 63204-0949(LT)	0.0241 Ha.
2				0.0185 Ha.
3				0.0185 Ha.
4				0.0302 Ha.

PLAN 57R-11070

Received and deposited

February 6<sup>th</sup>, 2023

Linda Crouch

Representative for the  
Land Registrar for the  
Land Titles Division of  
Victoria (No.57)

PLAN OF SURVEY OF  
**BLOCK 99**  
**REGISTERED PLAN 57M-812**  
**CITY OF KAWARTHA LAKES**

SCALE 1 : 250

THE INTENDED PLOT SIZE OF THIS PLAN IS 457mm IN WIDTH BY 356mm IN HEIGHT  
WHEN PLOTTED AT A SCALE OF 1:250  
COE FISHER CAMERON, A DIVISION OF J.D. BARNES LIMITED

**METRIC** DISTANCES AND/OR COORDINATES SHOWN ON THIS PLAN ARE IN METRES AND CAN BE CONVERTED TO FEET BY DIVIDING BY 0.3048.

**NOTES**

BEARINGS ARE UTM GRID, DERIVED FROM OBSERVED REFERENCE POINTS A AND B, BY REAL TIME NETWORK (RTN) OBSERVATIONS, UTM ZONE 17, NAD83 (CSRS) (2010.0).

DISTANCES ARE GROUND AND CAN BE CONVERTED TO GRID BY MULTIPLYING BY THE COMBINED SCALE FACTOR OF 0.999948.

**LEGEND**

■	DENOTES	SURVEY MONUMENT FOUND
□	DENOTES	SURVEY MONUMENT SET
SIB	DENOTES	STANDARD IRON BAR
SSIB	DENOTES	SHORT STANDARD IRON BAR
IB	DENOTES	IRON BAR
JDB	DENOTES	J.D. BARNES O.L.S. LTD.
PCF	DENOTES	POURED CONCRETE FOUNDATION
PL	DENOTES	PART LIMIT WITHIN DEMISING WALL
P	DENOTES	REGISTERED PLAN 57M-812

ALL BUILDING TIES ARE TAKEN TO CONCRETE FOUNDATION.

COMPLIANCE WITH ONTARIO BUILDING CODE SETBACK REQUIREMENTS ARE NOT VERIFIED BY THIS SURVEY.

ALL SET SIB AND PB MONUMENTS WERE USED DUE TO LACK OF OVERBURDEN AND/OR PROXIMITY OF UNDERGROUND UTILITIES IN ACCORDANCE WITH SECTION 11 (4) OF OREG 525/91.

ALL BEARINGS AND DISTANCES AGREE WITH P - REGISTERED PLAN 57M-812, UNLESS NOTED OTHERWISE.

**INTEGRATION DATA**

OBSERVED REFERENCE POINTS (ORPs): UTM ZONE 17, NAD83 (CSRS) (2010.0), COORDINATES TO URBAN ACCURACY PER SECTION 14 (2) OF OREG 218/10.

POINT ID	EASTING	NORTHING
ORP (A)	678 268.08	4 913 901.48
ORP (B)	678 287.67	4 913 939.80

COORDINATES CANNOT, IN THEMSELVES, BE USED TO RE-ESTABLISH CORNERS OR BOUNDARIES SHOWN ON THIS PLAN.

THE RESULTANT TIE BETWEEN ORP (A) AND ORP (B) IS 43.04m, N27°04'20"E

**SURVEYOR'S CERTIFICATE**

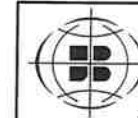
I CERTIFY THAT:

- THIS SURVEY AND PLAN ARE CORRECT AND IN ACCORDANCE WITH THE SURVEYS ACT, THE SURVEYORS ACT AND THE LAND TITLES ACT AND THE REGULATIONS MADE UNDER THEM.
- THE SURVEY WAS COMPLETED ON THE 4th DAY OF OCTOBER, 2022.

FEBRUARY 1, 2023  
DATE

*M. A. Hanna*  
MARINA HANNA  
ONTARIO LAND SURVEYOR

THIS PLAN OF SURVEY RELATES TO AOLS PLAN SUBMISSION FORM NUMBER 2161855



**COE FISHER CAMERON**

LAND SURVEYORS

A Division of

J. D. Barnes Limited

3 COMMERCE PLACE, UNIT 201, LINDSAY, ON K9V 0N5  
T: (705) 324-4152 F: (705) 324-8406 www.jdbarnes.com

DRAWN BY:	DBR	CHECKED BY:	MAH	REFERENCE NO.:	17-17-355-20-99
PLOTTED:	2/1/2023	DATED:	2/1/2023		

FILE: G:\17-17-355\20\Drawing\17-17-355-20-99.dgn



CORLEY STREET  
PIN 63204 -0977(LT)

IB(JDB)

25.01

7.81

4.20

4.20

6.03

SSIB

6.00

4.85

IB

4.65

6.00

SSIB

6.05

IB

5.68

5.20

N18°43'00"W

8.00

5.20

3.77

3.77

2.34

4.08

8.30

25.85

IB(JDB)

10.20

N18°43'00"W

10.20

IB(JDB)

10.20

IB(JDB)

10.20

IB(JDB)

10.20

IB(JDB)

10.20

IB(JDB)

10.20

IB(JDB)

10.20

IB(JDB)

10.20

IB(JDB)

10.20

IB(JDB)

10.20

IB(JDB)

10.20

IB(JDB)

10.20

IB(JDB)

10.20

IB(JDB)

10.20

BLOCK 101  
PIN 63204 -0951(LT)

57M-812

LOT 23  
PIN 63204 -1004(LT)

LOT 22  
PIN 63204 -1003(LT)

LOT 21  
PIN 63204 -1002(LT)

WARNER GATE  
PIN 63204 -0977(LT)

SCHEDULE				
PART	BLOCK	PLAN	PIN	AREA
1	ALL OF BLOCK 100	REGISTERED PLAN 57M-812	ALL OF 63204-0950(LT)	0.0302 Ha.
2				0.0185 Ha.
3				0.0185 Ha.
4				0.0241 Ha.

PLAN 57R-11072

Received and deposited

February 7<sup>th</sup>, 2023

Kelly Cochrane-nott

Representative for the  
Land Registrar for the  
Land Titles Division of  
Victoria (No.57)

PLAN OF SURVEY OF  
**BLOCK 100**  
**REGISTERED PLAN 57M-812**  
**CITY OF KAWARTHA LAKES**

SCALE 1 : 250

THE INTENDED PLOT SIZE OF THIS PLAN IS 457mm IN WIDTH BY 356mm IN HEIGHT  
WHEN PLOTTED AT A SCALE OF 1:250  
COE FISHER CAMERON, A DIVISION OF J.D. BARNES LIMITED

**METRIC** DISTANCES AND/OR COORDINATES SHOWN ON THIS PLAN ARE IN  
METRES AND CAN BE CONVERTED TO FEET BY DIVIDING BY 0.3048.

**NOTES**

BEARINGS ARE UTM GRID, DERIVED FROM OBSERVED REFERENCE POINTS A AND B,  
BY REAL TIME NETWORK (RTN) OBSERVATIONS, UTM ZONE 17, NAD83 (CSRS)  
(2010.0).

DISTANCES ARE GROUND AND CAN BE CONVERTED TO GRID BY MULTIPLYING BY  
THE COMBINED SCALE FACTOR OF 0.999948.

**LEGEND**

■	DENOTES	SURVEY MONUMENT FOUND
□	DENOTES	SURVEY MONUMENT SET
SIB	DENOTES	STANDARD IRON BAR
SSIB	DENOTES	SHORT STANDARD IRON BAR
IB	DENOTES	IRON BAR
JDB	DENOTES	J.D. BARNES O.L.S. LTD.
PCF	DENOTES	POURED CONCRETE FOUNDATION
PL	DENOTES	PART LIMIT WITHIN DEMISING WALL
P	DENOTES	REGISTERED PLAN 57M-812

ALL BUILDING TIES ARE TAKEN TO CONCRETE FOUNDATION.

COMPLIANCE WITH ONTARIO BUILDING CODE SETBACK REQUIREMENTS ARE  
NOT VERIFIED BY THIS SURVEY.

ALL SET SSB AND PB MONUMENTS WERE USED DUE TO LACK OF OVERBURDEN  
AND/OR PROXIMITY OF UNDERGROUND UTILITIES IN ACCORDANCE WITH  
SECTION 11 (4) OF OREG. 525/91.

ALL BEARINGS AND DISTANCES AGREE WITH P - REGISTERED PLAN 57M-812  
UNLESS NOTED OTHERWISE.

**INTEGRATION DATA**

OBSERVED REFERENCE POINTS (ORPs): UTM ZONE 17, NAD83 (CSRS) (2010.0),  
COORDINATES TO URBAN ACCURACY PER SECTION 14 (2) OF OREG 216/10.

POINT ID	EASTING	NORTHING
ORP (A)	678 250.43	4 913 953.58
ORP (B)	678 271.62	4 913 987.16

COORDINATES CANNOT, IN THEMSELVES, BE USED TO RE-ESTABLISH  
CORNERS OR BOUNDARIES SHOWN ON THIS PLAN.

THE RESULTANT TIE BETWEEN ORP (A) AND ORP (B) IS 39.71m, N32°5'10"E

**SURVEYOR'S CERTIFICATE**

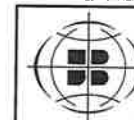
I CERTIFY THAT:

- THIS SURVEY AND PLAN ARE CORRECT AND IN ACCORDANCE WITH THE SURVEYS  
ACT, THE SURVEYORS ACT AND THE LAND TITLES ACT AND THE REGULATIONS  
MADE UNDER THEM.
- THE SURVEY WAS COMPLETED ON THE 3rd DAY OF FEBRUARY, 2023.

FEBRUARY 3, 2023  
DATE

*M. A. Hanna*  
MARYANN HANNA  
ONTARIO LAND SURVEYOR

THIS PLAN OF SURVEY RELATES TO ADLS PLAN SUBMISSION FORM NUMBER 2161856



**COE FISHER CAMERON**

LAND SURVEYORS

A Division of

J. D. Barnes Limited

3 COMMERCE PLACE, UNIT 201, LINDSAY, ON K9V 0N5  
T: (705) 324-4152 F: (705) 324-8406 www.jdbarnes.com

DRAWN BY:	DBR	CHECKED BY:	MAH	REFERENCE NO.:	17-17-355-20-100
PLOTTED:	2/3/2023	DATED:	2/3/2023		

FILE: G:\17-17-355\20\Drawing\17-17-355-20-100.dgn





BLOCK 102

PIN 63204 -0952(LT)

(B) SIB(JOB)

ONEILL STREET

PIN 63204 -0975(LT)

CORLEY STREET  
PIN 63204 -0971(LT)

REGISTERED

BLOCK 100  
PIN 63204 -0950(LT)

WARNER GATE

SCHEDULE				
PART	BLOCK	PLAN	PIN	AREA
1	ALL OF BLOCK 101	REGISTERED PLAN 57M-812	ALL OF 63204-0951(LT)	0.0241 Ha.
2				0.0185 Ha.
3				0.0185 Ha.
4				0.0185 Ha.
5				0.0295 Ha.

PLAN 57R-11073

Received and deposited

February 7<sup>th</sup>, 2023

Kelly Cochrane-nott

Representative for the  
Land Registrar for the  
Land Titles Division of  
Victoria (No.57)

LOT 26  
PIN 63204 -1007(LT)

LOT 25  
PIN 63204 -1006(LT)

LOT 24  
PIN 63204 -1005(LT)

LOT 23  
PIN 63204 -1004(LT)

LOT 21

PLAN OF SURVEY OF  
BLOCK 101  
REGISTERED PLAN 57M-812  
CITY OF KAWARTHA LAKES

SCALE 1 : 250

THE INTENDED PLOT SIZE OF THIS PLAN IS 457mm IN WIDTH BY 356mm IN HEIGHT WHEN PLOTTED AT A SCALE OF 1:250

COE FISHER CAMERON, A DIVISION OF J.D. BARNES LIMITED

**METRIC** DISTANCES AND/OR COORDINATES SHOWN ON THIS PLAN ARE IN METRES AND CAN BE CONVERTED TO FEET BY DIVIDING BY 0.3048.

**NOTES**

BEARINGS ARE UTM GRID, DERIVED FROM OBSERVED REFERENCE POINTS A AND B, BY REAL TIME NETWORK (RTN) OBSERVATIONS, UTM ZONE 17, NAD83 (CSRS) (2010.0).

DISTANCES ARE GROUND AND CAN BE CONVERTED TO GRID BY MULTIPLYING BY THE COMBINED SCALE FACTOR OF 0.999948.

**LEGEND**

■	DENOTES	SURVEY MONUMENT FOUND
□	DENOTES	SURVEY MONUMENT SET
SIB	DENOTES	STANDARD IRON BAR
SSIB	DENOTES	SHORT STANDARD IRON BAR
IB	DENOTES	IRON BAR
JOB	DENOTES	J.D. BARNES O.L.S. LTD.
PCF	DENOTES	POURED CONCRETE FOUNDATION
PL	DENOTES	PART LIMIT WITHIN DEMISING WALL
PL	DENOTES	REGISTERED PLAN 57M-812

ALL BUILDING TIES ARE TAKEN TO CONCRETE FOUNDATION.

COMPLIANCE WITH ONTARIO BUILDING CODE SETBACK REQUIREMENTS ARE NOT VERIFIED BY THIS SURVEY.

ALL SET SSIB AND PB MONUMENTS WERE USED DUE TO LACK OF OVERBURDEN AND/OR PROXIMITY OF UNDERGROUND UTILITIES IN ACCORDANCE WITH SECTION 11 (4) OF O.R.C. 325/91.

ALL BEARINGS AND DISTANCES AGREE WITH P - REGISTERED PLAN 57M-812 UNLESS NOTED OTHERWISE.

**INTEGRATION DATA**

OBSERVED REFERENCE POINTS (ORP): UTM ZONE 17, NAD83 (CSRS) (2010.0), COORDINATES TO URBAN ACCURACY PER SECTION 14 (2) OF O.R.C. 216/10.

POINT ID	EASTING	NORTHING
ORP (A)	678 281.25	4 913 958.74
ORP (B)	678 231.06	4 914 010.75

COORDINATES CANNOT, IN THEMSELVES, BE USED TO RE-ESTABLISH CORNERS OR BOUNDARIES SHOWN ON THIS PLAN.

THE RESULTANT TIE BETWEEN ORP (A) AND ORP (B) IS 72.28m, N43°58'50"W

**SURVEYOR'S CERTIFICATE**

I CERTIFY THAT:

- THIS SURVEY AND PLAN ARE CORRECT AND IN ACCORDANCE WITH THE SURVEYS ACT, THE SURVEYORS ACT AND THE LAND TITLES ACT AND THE REGULATIONS MADE UNDER THEM.
- THE SURVEY WAS COMPLETED ON THE 3rd DAY OF FEBRUARY, 2023.

FEBRUARY 3, 2023  
DATE

*M. A. Hanna*  
MARVIN A. HANNA  
ONTARIO LAND SURVEYOR

THIS PLAN OF SURVEY RELATES TO AOLS PLAN SUBMISSION FORM NUMBER V-41342



COE FISHER CAMERON

LAND SURVEYORS

A Division of

J. D. Barnes Limited

3 COMMERCE PLACE, UNIT 201, LINDSAY, ON K9V 0N5  
T: (705) 324-4152 F: (705) 324-8406 www.jdbarnes.com

DRAWN BY:	CHECKED BY:	REFERENCE NO.:
DBR	MAH	17-17-355-20-101
PLOTTED: 2/3/2023	DATED: 2/3/2023	

FILE: G:\17-17-355\20\Drawing\17-17-355-20-101.dgn