

Figure 7:
**Township of Eldon
 Zoning By-law 94-14
 & Township of
 Carden Zoning
 By-law 95-8Z)**

James Dick Construction Limited
 Part of Lots 30, 31 and 32, Concession 1
 (former Geographic Township of Eldon)
 City of Kawartha Lakes

LEGEND

Township of Eldon

EP- Environmental Protection
 CF- Community Facility
 A1- Agricultural
 A2- Rural General
 HR- Hamlet Residential
 RR1- Rural Residential Type One
 RR2- Rural Residential Type Two
 RR3- Rural Residential Type Three
 LSR- Limited Service Residential
 C1- General Commercial
 C2- Highway Commercial
 C3- Tourist Commercial
 M1- Restricted Industrial
 M2- General Industrial
 M3- Extractive Industrial
 M4- Disposal Industrial

Township of Carden

RR1- Rural Residential Type One Zone
 RR2- Rural Residential Type Two Zone
 LSR- Limited Service Residential Zone
 EP- Environmental Protection Zone
 CF- Community Facility Zone
 RG- Rural General Zone
 C2- Highway Commercial Zone
 C3- Commercial Recreation Zone
 C4- Commercial Campground Zone
 M1- Industrial Extractive Zone
 M2- Industrial Disposal Zone
 M3- General Industrial Zone

Note:

The subject lands are located within Eldon Township, Carden Township Zoning shown for reference purposes.

DATE: June, 2018

FILE: 9633N

SCALE: NTS

DRAWN: GC



K:\9633N-JAMES DICK CONSTRUCTION\KAWARTHA LAKES-ROVALLION ROAD\PTZ\ZONING.DWG

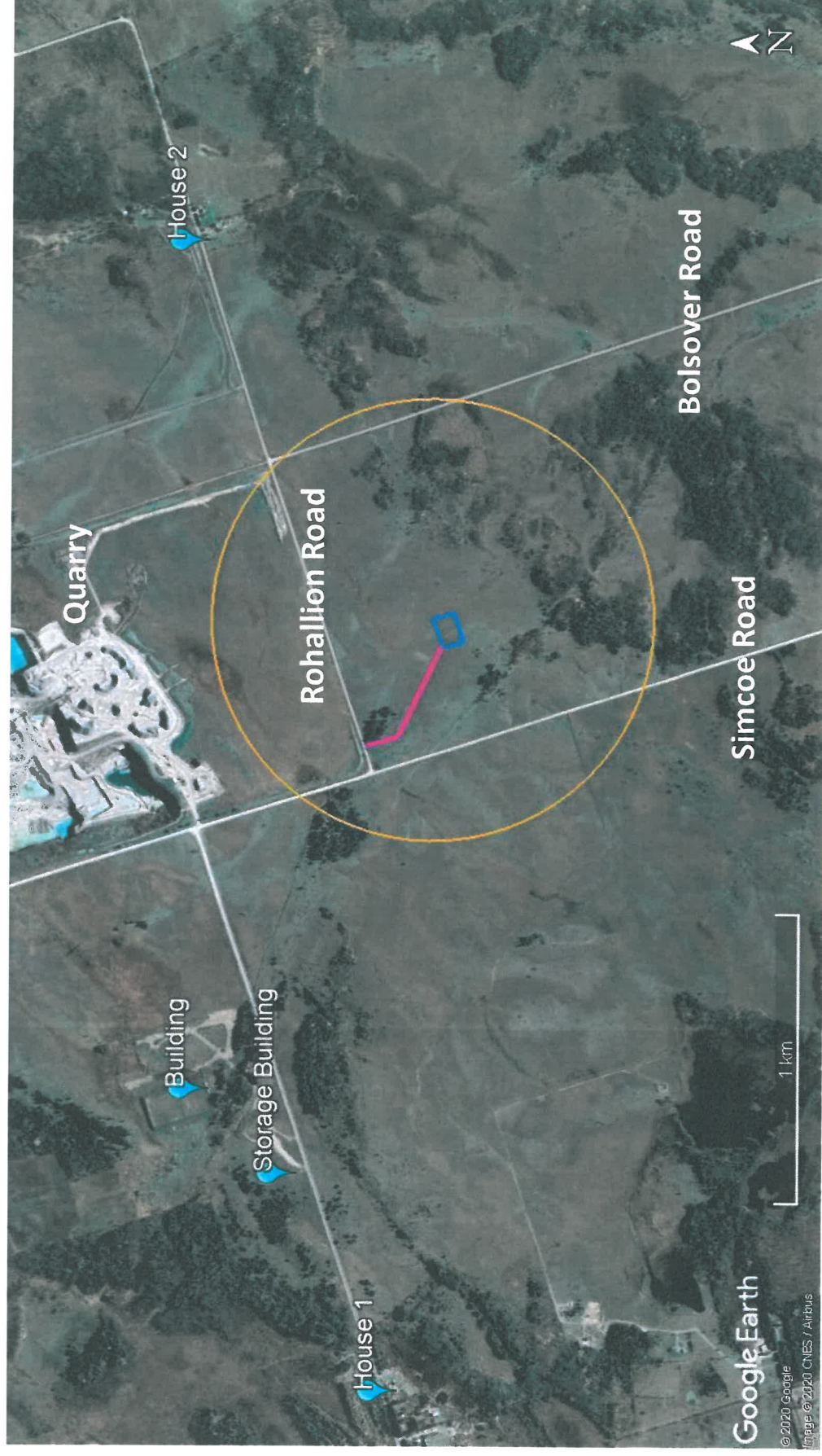


**PLANNING
 URBAN DESIGN
 & LANDSCAPE
 ARCHITECTURE**

200-540 BINGEMANS CENTRE DR. KITCHENER, ON. N2B 3X9
 P: 519.576.3650 F: 519.576.0121 | WWW.MHBCPLAN.COM

Eldon Site Area Map

Rev. 0, 2020-07-15



Legend:

Blue pins: Buildings in area surrounding site (2 houses, a building and a storage building).