



October 27  
Revisions: 0

Projection: (NAD 83) Universal Transverse Mercator  
Coordinate System: Lat/Long, Zone 17

Map produced by the City of Kawartha Lakes Engineering Department with data obtained under license. Reproduction without permission is prohibited.

The foregoing information is given for convenience only and it should be clearly understood that you must satisfy yourself as to whether the premises and the existing or proposed use thereof are, or would be, in conformity with all applicable by-laws and regulations of the municipality.

All distances and locations are approximate and are not of survey quality. This map is illustrative only. Do not rely on it as being a precise indicator of privately or publicly owned land, routes, locations or features, nor as a guide to navigate.

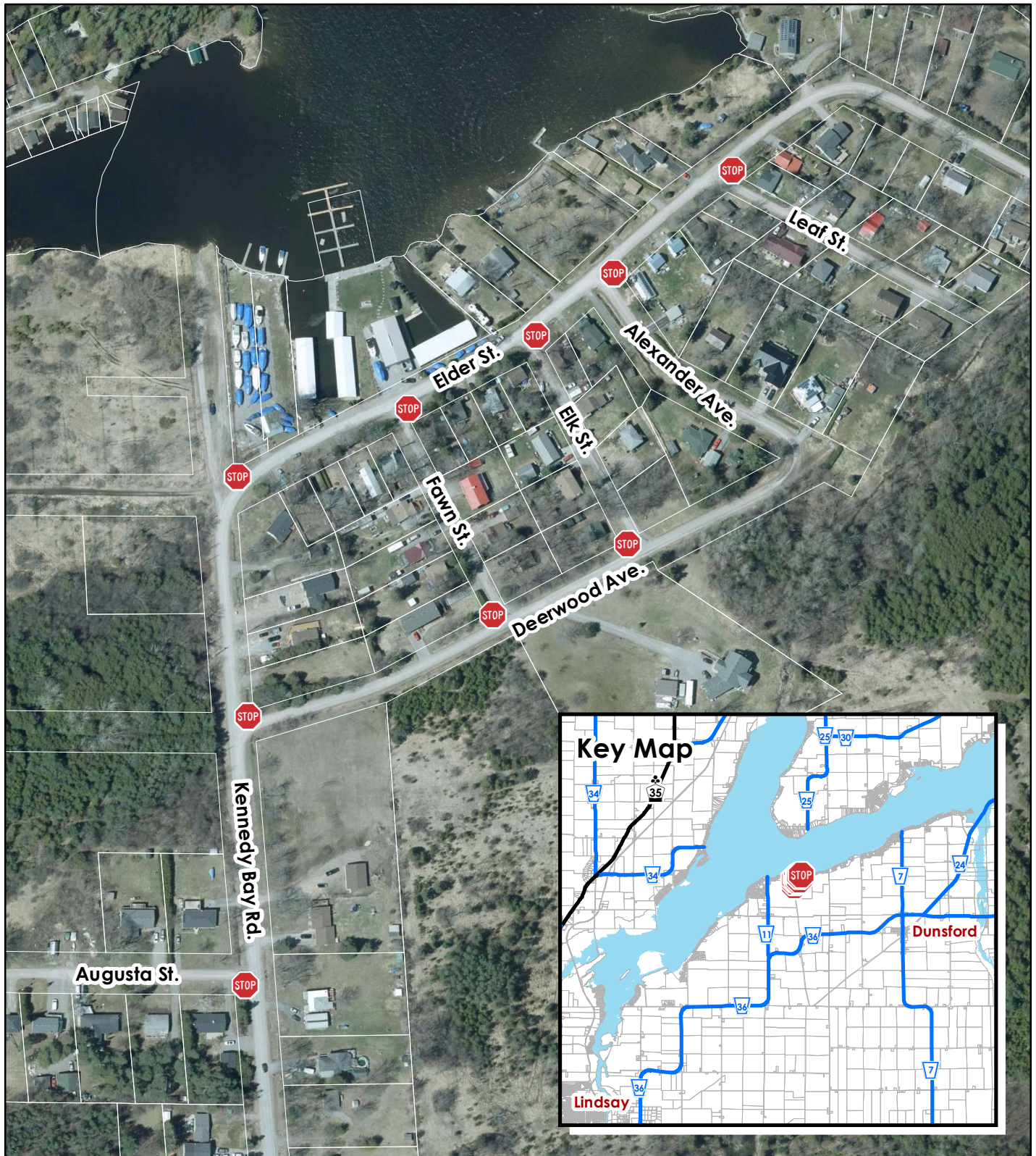
0 250 500 Meters



### Legend

 Proposed Yield Sign Locations

# Kennedy Bay Road (Hamlet Community) Stop Signs for Uncontrolled Intersections



October 27  
Revisions: 0

Projection: (NAD 83) Universal Transverse Mercator  
Coordinate System: Lat/Long, Zone 17

Map produced by the City of Kawartha Lakes Engineering Department with data obtained under license. Reproduction without permission is prohibited.

The foregoing information is given for convenience only and it should be clearly understood that you must satisfy yourself as to whether the premises and the existing or proposed use thereof are, or would be, in conformity with all applicable by-laws and regulations of the municipality.

All distances and locations are approximate and are not of survey quality. This map is illustrative only. Do not rely on it as being a precise indicator of privately or publicly owned land, routes, locations or features, nor as a guide to navigate.

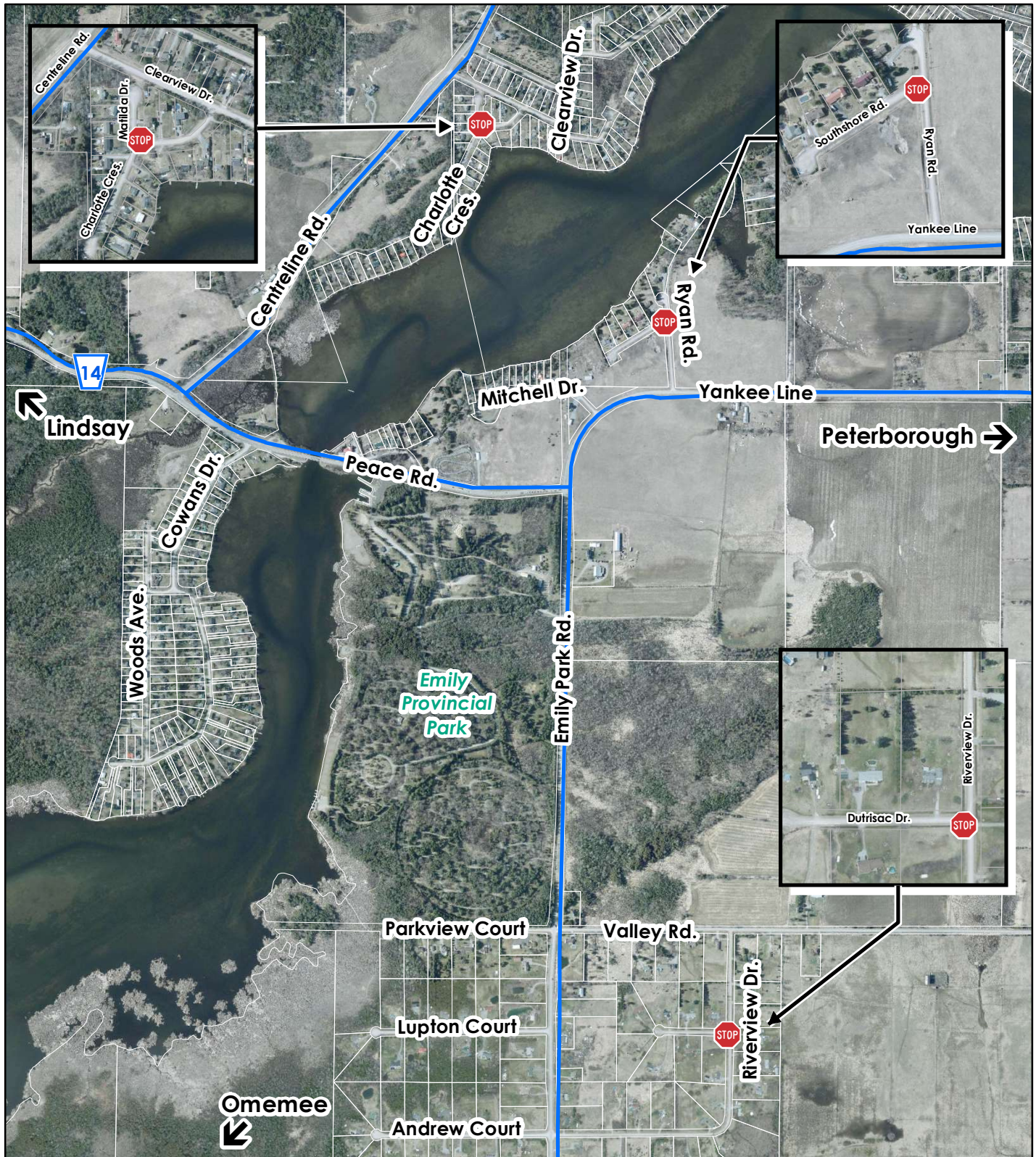
0 90 180 Meters



## Legend

Proposed Stop Sign Locations

# Emily Park Area Stop Signs for Uncontrolled Intersections



October 27  
Revisions: 0

Projection: (NAD 83) Universal Transverse Mercator  
Coordinate System: Lat/Long, Zone 17

Map produced by the City of Kawartha Lakes Engineering Department with data obtained under license. Reproduction without permission is prohibited.

The foregoing information is given for convenience only and it should be clearly understood that you must satisfy yourself as to whether the premises and the existing or proposed use thereof are, or would be, in conformity with all applicable by-laws and regulations of the municipality.

All distances and locations are approximate and are not of survey quality. This map is illustrative only. Do not rely on it as being a precise indicator of privately or publicly owned land, routes, locations or features, nor as a guide to navigate.

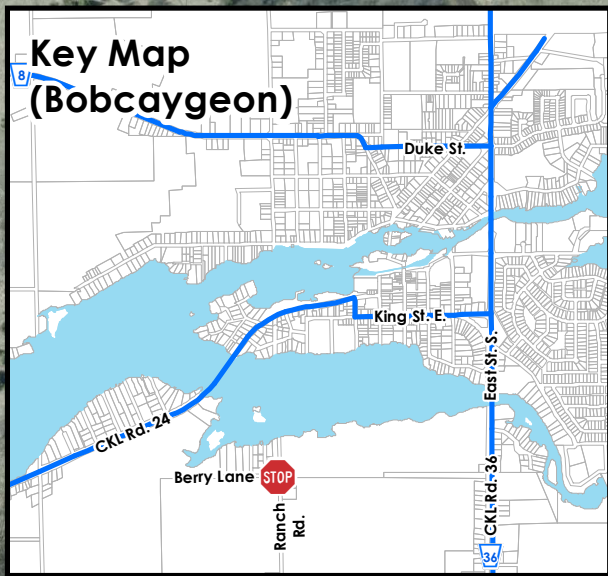
0 500 1,000 Meters



## Legend

Proposed Stop Sign Locations

# Berry Lane / Ranch Road (Bobcaygeon - Rural) Stop Signs for Uncontrolled Intersections



October 27  
Revisions: 0

Projection: (NAD 83) Universal Transverse Mercator  
Coordinate System: Lat/Long, Zone 17

Map produced by the City of Kawartha Lakes Engineering Department with data obtained under license. Reproduction without permission is prohibited.

The foregoing information is given for convenience only and it should be clearly understood that you must satisfy yourself as to whether the premises and the existing or proposed use thereof are, or would be, in conformity with all applicable by-laws and regulations of the municipality.

All distances and locations are approximate and are not of survey quality. This map is illustrative only. Do not rely on it as being a precise indicator of privately or publicly owned land, routes, locations or features, nor as a guide to navigate.

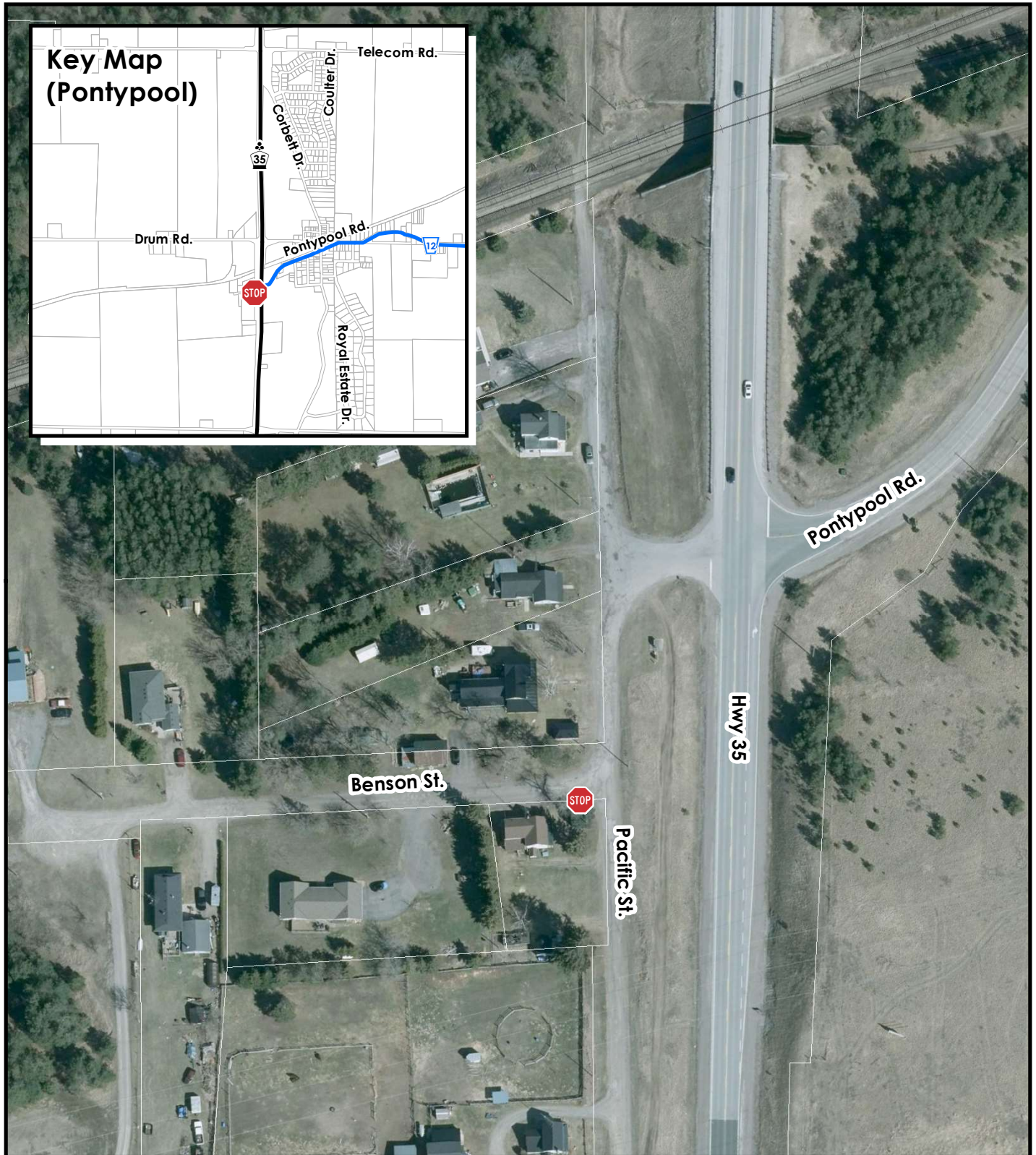


0 100 200  
Meters

## Legend

 Proposed Stop Sign Locations

# Benson Street / Pacific Street (Pontypool) Stop Signs for Uncontrolled Intersections



October 27  
Revisions: 0

Projection: (NAD 83) Universal Transverse Mercator  
Coordinate System: Lat/Long, Zone 17

Map produced by the City of Kawartha Lakes Engineering Department with data obtained under license. Reproduction without permission is prohibited.

The foregoing information is given for convenience only and it should be clearly understood that you must satisfy yourself as to whether the premises and the existing or proposed use thereof are, or would be, in conformity with all applicable by-laws and regulations of the municipality.

All distances and locations are approximate and are not of survey quality. This map is illustrative only. Do not rely on it as being a precise indicator of privately or publicly owned land, routes, locations or features, nor as a guide to navigate.



0 50 100 Meters

## Legend

 Proposed Stop Sign Locations