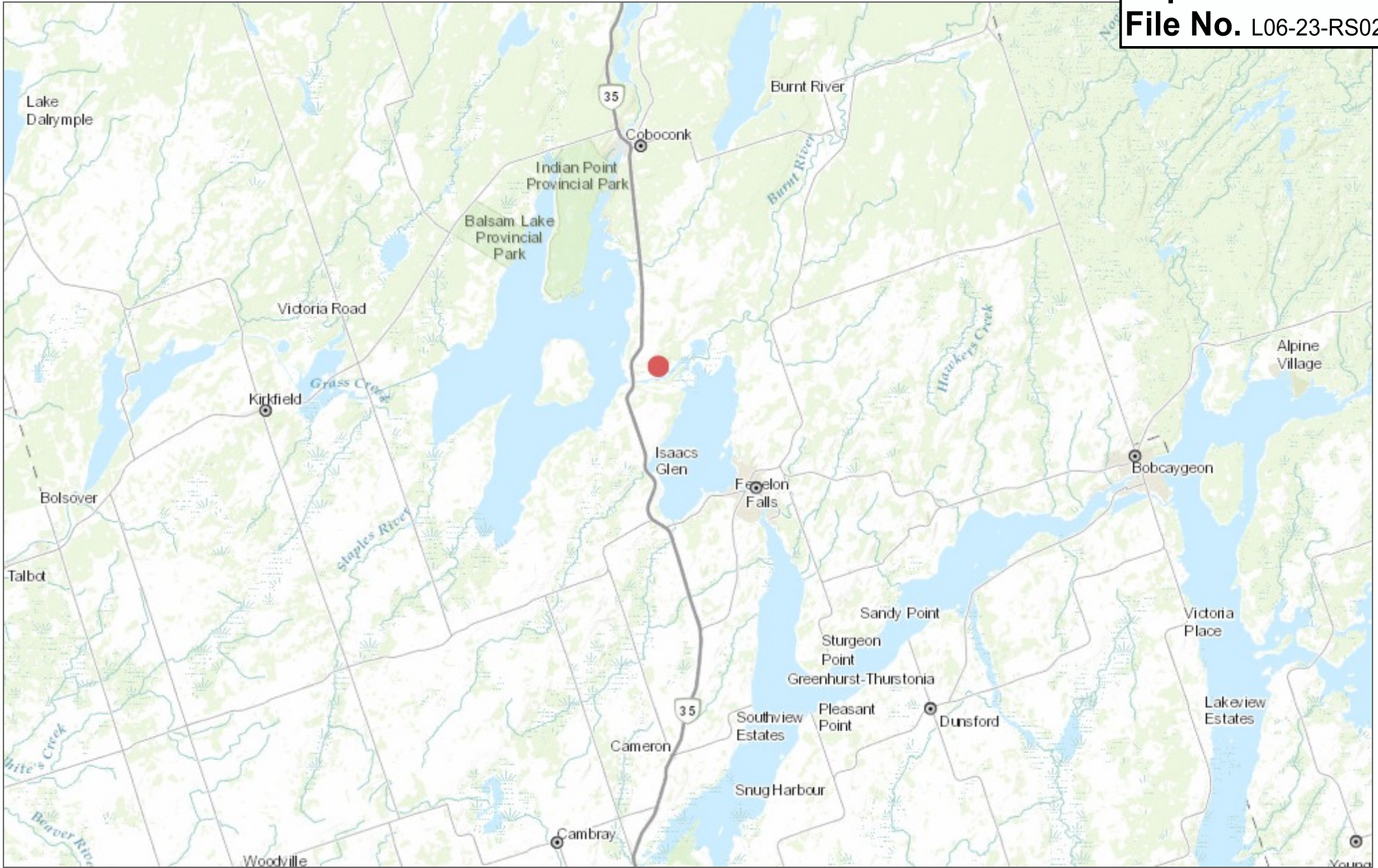


RDAL adj Part Lot 32 Concession 9 Fenelon

Appendix B
to
Report RS2024-001
File No. L06-23-RS025



14.68

 Kilometers
WGS_1984_Web_Mercator_Auxiliary_Sphere
© City Of Kawartha Lakes

This map is a user generated static output from an Internet mapping site and is for reference only. Data layers that appear on this map may or may not be accurate, current, or otherwise reliable.

THIS MAP IS NOT TO BE USED FOR NAVIGATION

Enter your notes here...

Notes

RDAL adj Part Lot 32 Concession 9 Fenelon



0.11

Kilometers

WGS_1984_Web_Mercator_Auxiliary_Sphere
© City Of Kawartha Lakes

This map is a user generated static output from an Internet mapping site and is for reference only. Data layers that appear on this map may or may not be accurate, current, or otherwise reliable.
THIS MAP IS NOT TO BE USED FOR NAVIGATION

Enter your notes here...

Notes

RDAL adj Part Lot 32 Concession 9 Fenelon



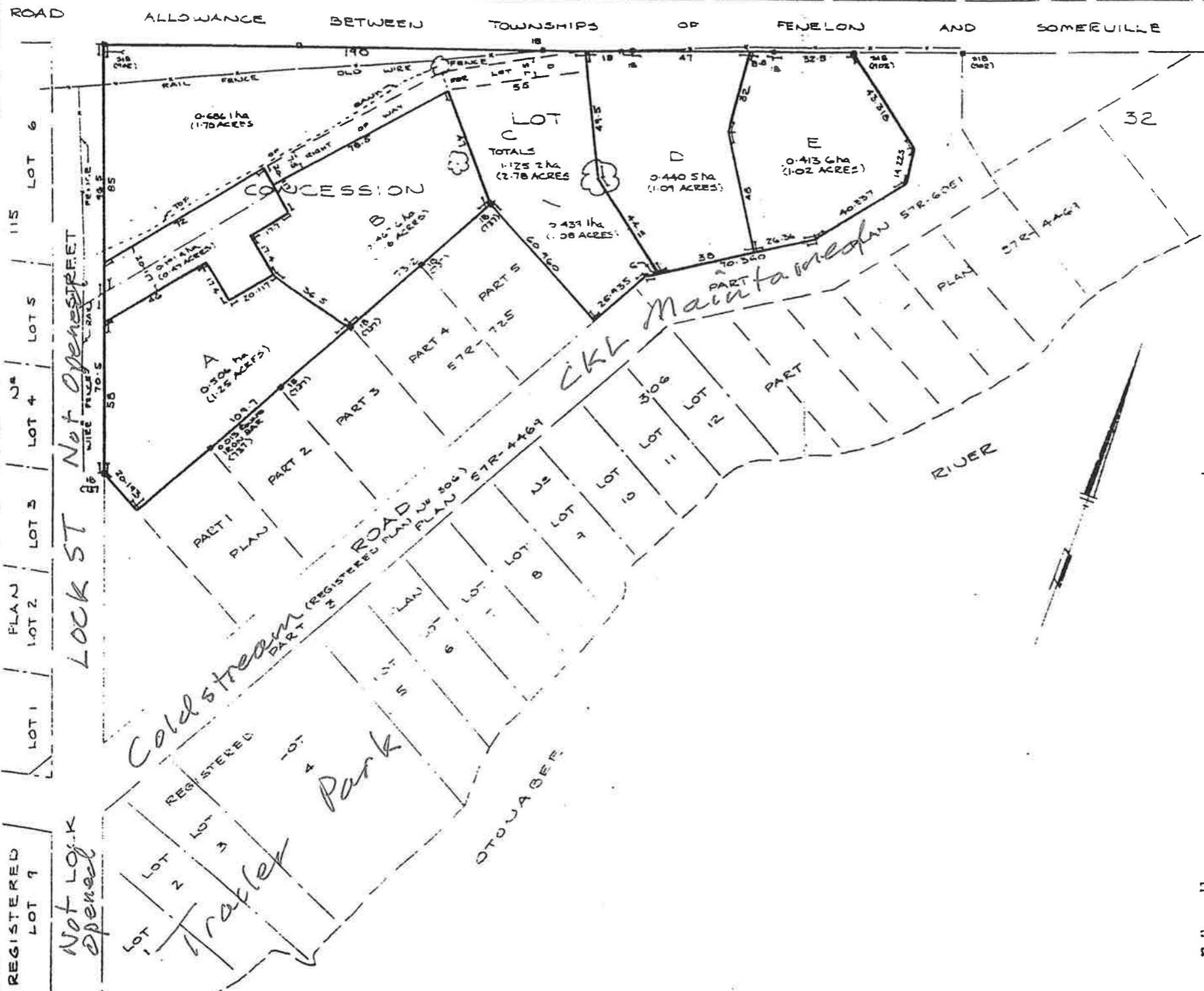
0.23

Kilometers
WGS_1984_Web_Mercator_Auxiliary_Sphere
© City Of Kawartha Lakes

This map is a user generated static output from an Internet mapping site and is for reference only. Data layers that appear on this map may or may not be accurate, current, or otherwise reliable.
THIS MAP IS NOT TO BE USED FOR NAVIGATION

Enter your notes here...

Notes



METRIC
 DISTANCES SHOWN ON THIS PLAN ARE IN METRES AND CAN BE CONVERTED TO FEET BY DIVIDING BY 0.3048

SKETCH
 SHOWING
 PART OF LOT 32
 CONCESSION 9
 TOWNSHIP OF FENELON
 COUNTY OF VICTORIA

SCALE 1:1500
 10 0 10 20 30 40 50 60 70 80 90 METRES

DESIGN DECEMBER 18, 1991
 DATED SEPTEMBER 16, 1991
 DATA ADDED OCTOBER 8, 1991

Potential looping of Hemlock Street and Coldstream Road:

