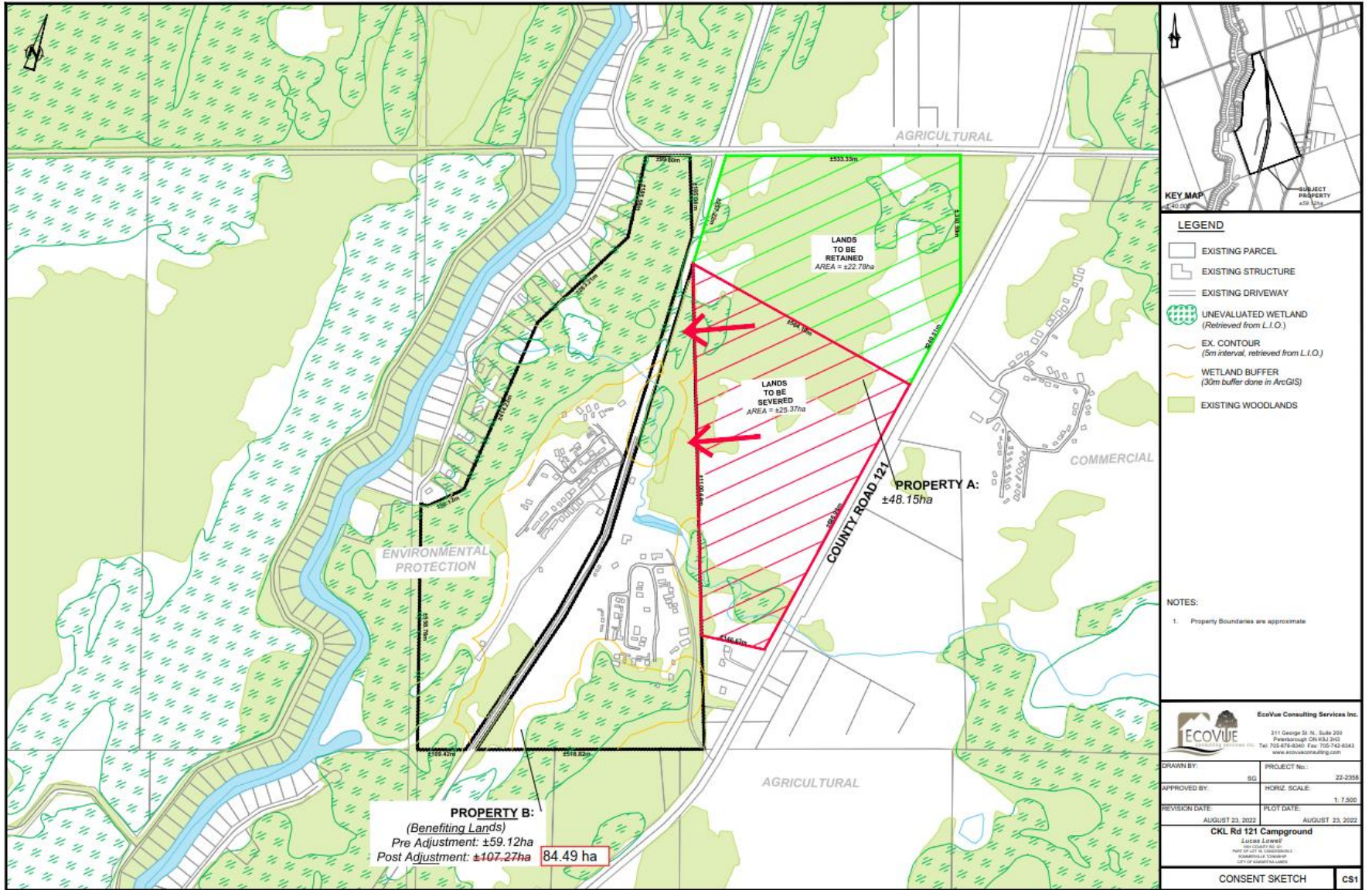


Appendix 'C'
 TO
 Report PLAN2024-051
 D06-2024-015
 D01-2024-005



PROJECT NO: 22-2358
 DATE: NOVEMBER 23, 2022
 HORIZ. SCALE: 1:8,000

FIGURE 1 - SITE LOCATION
CKL Rd 121 Campground
Lucas Lowell
 1891 COUNTY RD 121
 PART OF LOT 18, CONCESSION 2
 SOMMERVILLE TOWNSHIP
 CITY OF KAWARTHA LAKES



- LEGEND**
- EXISTING PARCEL
 - EXISTING STRUCTURE
 - EXISTING DRIVEWAY
 - UNEVALUATED WETLAND (Retrieved from L.I.O.)
 - EX. CONTOUR (5m interval, retrieved from L.I.O.)
 - WETLAND BUFFER (30m buffer done in ArcGIS)
 - EXISTING WOODLANDS

NOTES:

- Property Boundaries are approximate

EcoVue Consulting Services Inc.
 311 George St. N. Suite 209
 Peterborough ON K9J 3H3
 Tel: 705-878-6300 Fax: 705-742-6343
 www.ecovueconsulting.com

DRAWN BY:	SG	PROJECT No.:	22-2358
APPROVED BY:		HORIZ. SCALE:	1:7,500
REVISION DATE:	AUGUST 23, 2022	PLOT DATE:	AUGUST 23, 2022
CKL Rd 121 Campground			
<small>LUCAS LOWRIE INCORPORATED PART OF A.I. CONSULTING CONSULTING ENGINEER CIVIL ENGINEER (L.S.E.)</small>			
CONSENT SKETCH			CS1