

Encampment Response Protocol

Committee of the Whole

September 10, 2024



Presentation outline

- Definition of an encampment
- Current state of encampments
- Legal context
- Advisory reports
- Overview of the protocol
- Implementation plans
- What's next

Definition of an encampment

Emergency accommodations established by people who are unhoused, usually on public property or privately-owned land, and often without permission.

Current state of encampments

- As of September 6, 2024:
 - 56 individuals experiencing unsheltered homelessness
 - 5 known encampments on public/municipal lands (13 people)
 - 9 known encampments on private lands (28 people)
 - Others are transient



Legal context

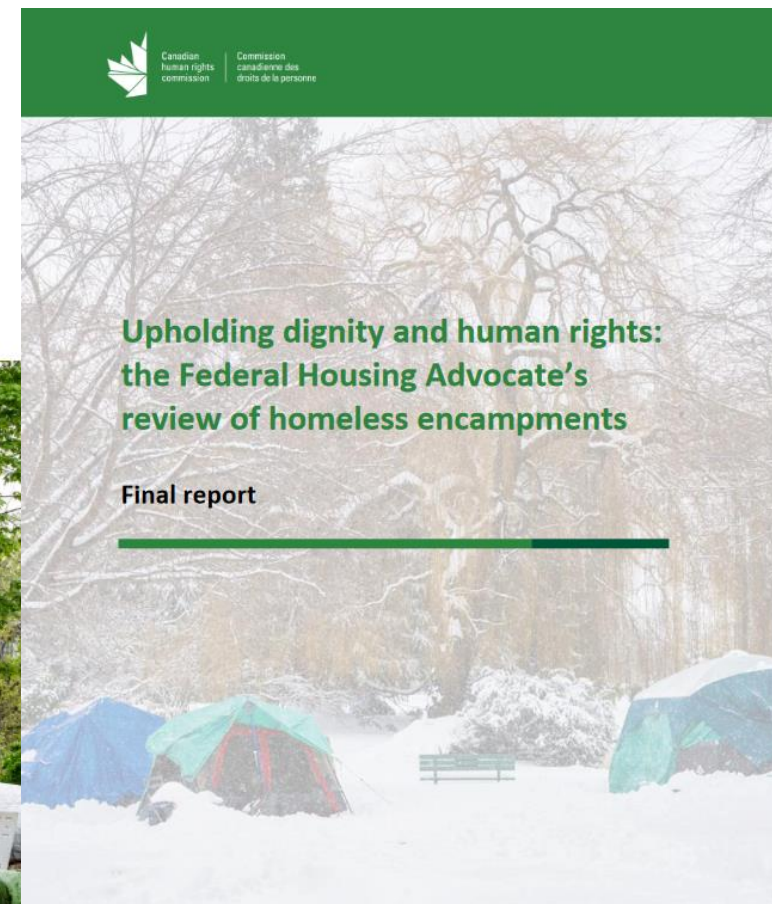
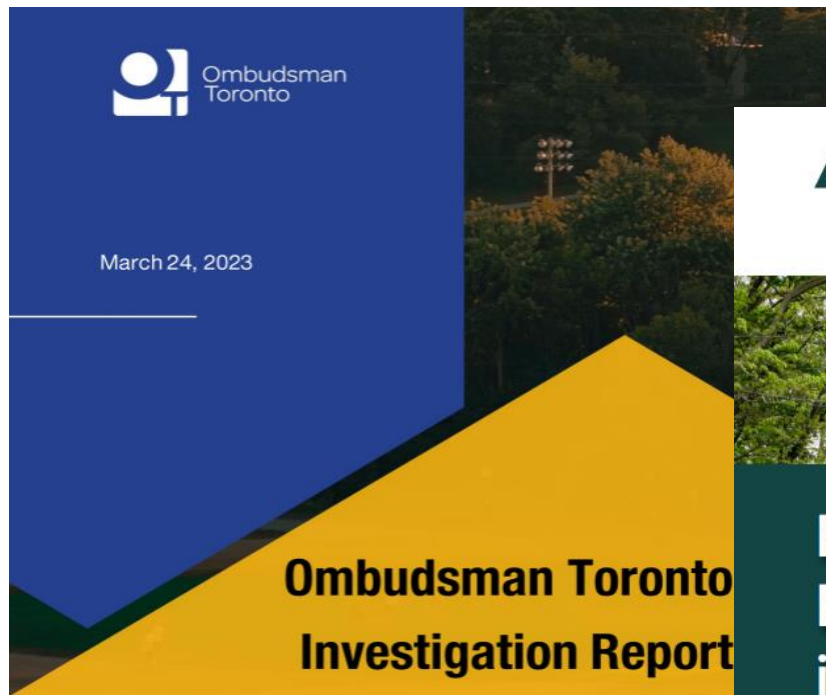
Laws:

- *The Canadian Charter of Rights and Freedoms*
- *Canadian Human Rights Act*

Legal precedents:

- The Regional Municipality of Waterloo – Ontario Superior Court – Decision January 27, 2023

Advisory Reports



Objectives of the Protocol

- Establish a consistent coordinated response
- Clarify roles and responsibilities
- Outline how the City will provide supports to those living in encampments
- Outline the process for initiating and conducting enforcement

Guiding Principles

1. Using a human rights-based approach
2. Treating people living in encampments with dignity, respect, kindness, and compassion
3. Housing-focused solutions
4. Using available tools and options to access indoor space and support services
5. Offering a variety of service models to meet the diverse needs
6. Using a coordinated and integrated
7. Engaging in ongoing proactive and transparent communication
8. Recognizing the knowledge and experience of, Indigenous communities
9. Ongoing monitoring and periodic review

Interdepartmental Encampment Protocol Working Group

- Housing Services
- Municipal Law Enforcement
- Community Services
- Paramedic Services
- Fire Services
- Office of the City Clerk
- Kawartha Lakes Police
- Ontario Provincial Police



Protocol Response

1. Engagement
2. Connection
3. Support and planning

ENCAMPMENT PROTOCOL RESPONSE

A QUICK GUIDE TO OUR COORDINATED RESPONSE

PURPOSE:

a team led response to use available tools and options to help individuals living in encampments access indoor space and services.



1 ENGAGEMENT

Identify encampment locations and number of individuals who are active at the site(s).
Build rapport and respect with persons.

2 CONNECTION

Notifications streamlined to CKL Outreach Team:

-  Phone:
-  E-mail:
-  Website:

3 SUPPORT AND PLANNING

Outreach teams will complete appropriate referrals for health, housing and income with clear and attainable goals.
Regularly assess the site and connect on the support plan.
Lead communication and updates to partners.



Protocol Response

Every situation is unique. Standardized processes or timelines can't be equally applied with each encampment occupant.

POTENTIAL OUTCOMES OF RESPONSE:

MOVE INDIVIDUALS INDOORS

Prioritize the housing needs of encampments to move indoors.
Offer storage supports to help assist in moving indoors.
The area will be cleared, closed as a site and cleaned.
Communication updates will go out to partners.



UNENGAGED/UNSAFE SITE

If a site is deemed inappropriate or unsafe, situation will be assessed regularly and a reviewed by the Working group and steering committee.



Notices, if appropriate, will be issued, communicated and monitored for compliance.

ENFORCEMENT

Any and all sites are removed humanely, with supports on site.

Items would be respectfully cleared and the site cleaned.

Communication and updates to go out to all partners.

Ongoing/follow up support continues to be available to individuals.



Implementing the protocol

1. Reorganizing internal processes, capacity and resources
2. Staff training
3. Education and engagement of businesses and the public
 - Website
 - Quick reference one-pager
 - Communication plan - social media/news release
 - Conversations
4. Ongoing monitoring



Applying the Response

Public education and consistent approaches will be critical!



New webpage



Dignity, Human Rights and Housing

In Kawartha Lakes, we understand the unique challenges faced by those without a permanent home. We are dedicated to respecting the dignity and human rights of every individual experiencing homelessness in our community.

Normalization of Encampments is not the Solution

It is not a sustainable, long-term solution for municipalities to allow the normalization of encampments. Municipalities need to act in the best interests of the homeless residents and their communities to find other solutions.

What's next

- Ready for the winter
- Continue to participate in provincial and federal initiatives
- Completion of our housing and homelessness needs assessment and updated strategic plan
- Update service contracts with our emergency shelter and supportive housing partners
- Work with other partners
- Monitor capacity needs

Questions?

Michelle Corley
Human Services Manager,
Housing

Aaron Sloan
Manager,
Municipal Law Enforcement