

NOTE: THIS PLAN OF SUBDIVISION COMPRISES PART OF PIN 63265-0465 & PART PIN 63265-0419.

**PLAN OF SUBDIVISION OF PART OF LOTS 24 & 25 CONCESSION 8 Geographic Township of Monvers CITY OF KAWARTHA LAKES**

SCALE 1 : 1000 METRES

IVAN B. WALLACE O.L.S. LTD.

Approved under Section 51(6) of the Planning Act, R.S.O. 1990, c.P.13.

This Plan is dated **19** May 2021.

**D. Wallace**  
 Director of Planning  
 The Corporation of the City of Kawartha Lakes

**OWNER'S CERTIFICATE**

THIS IS TO CERTIFY THAT:

1. Lots 1 to 32 inclusive, Part of Lots 33, 34 and 35, Blocks 36 and 37 inclusive, 0.30 Reserve Blocks 38 and 39 and Part of Block 40 the Streets, namely Horizon Court and Country Place, have been laid out in accordance with our instructions.
2. The Streets are hereby dedicated to the Corporation of the City of Kawartha Lakes as Public Highways.

Dated the **19** day of **May** 2021.

**D. Wallace**  
 Donald W. Kerr - President  
 WOODLAND HILLS COMMUNITY INC.  
 (PIN 63265-0465)

I have the authority to bind the corporation.

**OWNER'S CERTIFICATE**

THIS IS TO CERTIFY THAT:

1. Part of Lots 33, 34 & 35, Part of Block 40 and Block 39 have been laid out in accordance with our instructions. Dated the **16** day of **May** 2021.

**D. Wallace**  
 Donald W. Kerr - President  
 Weternment Corporation  
 (PIN 63265-0419)

I have the authority to bind the corporation.

**SURVEYOR'S CERTIFICATE**

I CERTIFY THAT:

1. This survey and plan are correct and in accordance with THE SURVEY ACT, THE SURVEYORS ACT AND THE LAND TITLES ACT and the regulations made under them.
2. The survey was completed on the October 15, 2020.

**BEARING NOTES**

April 13, 2021  
 Kerry Boehme  
 Ontario Land Surveyor

**DISTANCE NOTES**

Distances and coordinates shown on this plan are in metres and can be converted to feet by dividing by 0.3048. Distances are rounded and can be converted to feet by multiplying by the combined scale factor of 1.000028.

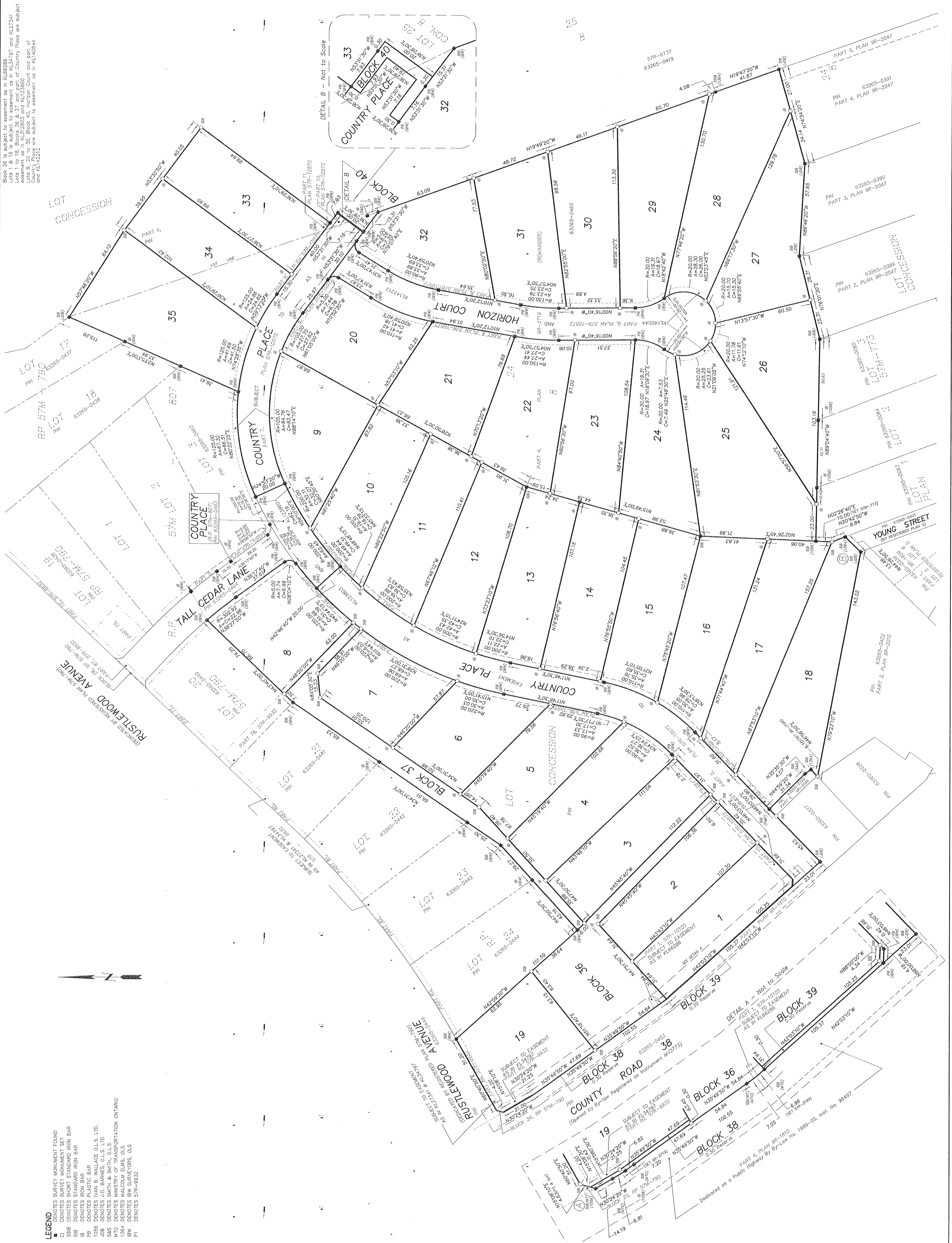
**INTEGRATION DATA**

Observed reference points derived from GPS observations using a Real Time Network (RTN) on June 17 (6° west longitude) NAD83(CRS) (2011).

Upper accuracy per Sec. 14(2), O.Reg. 216/10  
 POINT ID: 48945723  
 EASTING: 694182.09  
 NORTHING: 694525.81

**IBW SURVEYORS**

IBWSURVEYORS.COM | 1.800.667.0696



**LEGEND**

- DENOTES SURVEY MONUMENT FOUND
- DENOTES SURVEY MONUMENT SET
- SSB DENOTES SHORT STANDARD IRON BAR
- SB DENOTES STANDARD IRON BAR
- SPB DENOTES SHORT PLASTIC BAR
- PB DENOTES PLASTIC BAR
- 1056 DENOTES IVAN B. WALLACE O.L.S. LTD.
- JOB DENOTES J.D. BARNES, O.L.S. LTD.
- S&S DENOTES SMITH & SMITH, O.L.S.
- MTO DENOTES MINISTRY OF TRANSPORTATION ONTARIO
- 1364 DENOTES MALCOLM ELMS, O.L.S.
- IBW DENOTES IBW SURVEYORS, O.L.S.
- P1 DENOTES 57M-8952

Block 35 is subject to easement as in KL58286. Lots 1 & 19 is subject to easement as in KL34797 and KL27341. Lots 1 to 18, Blocks 36 & 37 and part of Country Place are subject to easement as in KL58286. Lots 19 to 32, Blocks 38, 39 and part of Country Place are subject to easement as in KL42212.

Block 35 is subject to easement as in KL58286. Lots 1 & 19 is subject to easement as in KL34797 and KL27341. Lots 1 to 18, Blocks 36 & 37 and part of Country Place are subject to easement as in KL58286. Lots 19 to 32, Blocks 38, 39 and part of Country Place are subject to easement as in KL42212.

Block 35 is subject to easement as in KL58286. Lots 1 & 19 is subject to easement as in KL34797 and KL27341. Lots 1 to 18, Blocks 36 & 37 and part of Country Place are subject to easement as in KL58286. Lots 19 to 32, Blocks 38, 39 and part of Country Place are subject to easement as in KL42212.

Block 35 is subject to easement as in KL58286. Lots 1 & 19 is subject to easement as in KL34797 and KL27341. Lots 1 to 18, Blocks 36 & 37 and part of Country Place are subject to easement as in KL58286. Lots 19 to 32, Blocks 38, 39 and part of Country Place are subject to easement as in KL42212.

Block 35 is subject to easement as in KL58286. Lots 1 & 19 is subject to easement as in KL34797 and KL27341. Lots 1 to 18, Blocks 36 & 37 and part of Country Place are subject to easement as in KL58286. Lots 19 to 32, Blocks 38, 39 and part of Country Place are subject to easement as in KL42212.

Block 35 is subject to easement as in KL58286. Lots 1 & 19 is subject to easement as in KL34797 and KL27341. Lots 1 to 18, Blocks 36 & 37 and part of Country Place are subject to easement as in KL58286. Lots 19 to 32, Blocks 38, 39 and part of Country Place are subject to easement as in KL42212.