



# CITY OF KAWARTHA LAKES TENDER 20XX-XX-XX CITY HALL CAMPUS BLOCK SITE BEAUTIFICATION

DRAWING LIST

1	----	COVER SHEET
2	L-01	REMOVALS PLAN
3	L-02	SURFACE TREATMENT FURNITURE AND LAYOUT PLAN
4	L-03	GRADING PLAN
5	L-04	PLANTING PLAN
6	L-05	DETAILS
7	L-06	DETAILS
8	L-06	GENERAL NOTES
9	E-01	ELECTRICAL LAYOUT AND DETAILS



KEY PLAN  
N.T.S

— PROJECT SITE



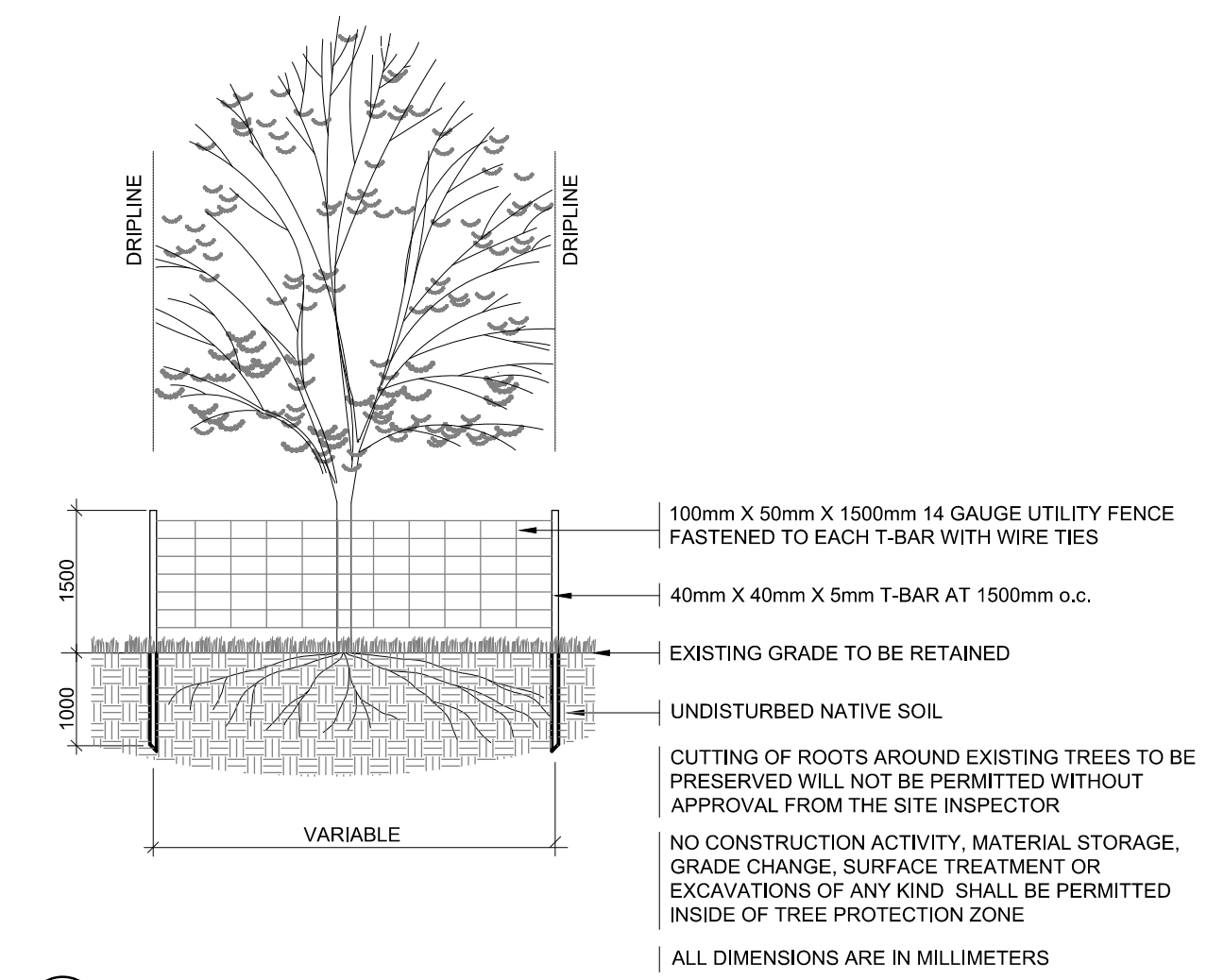
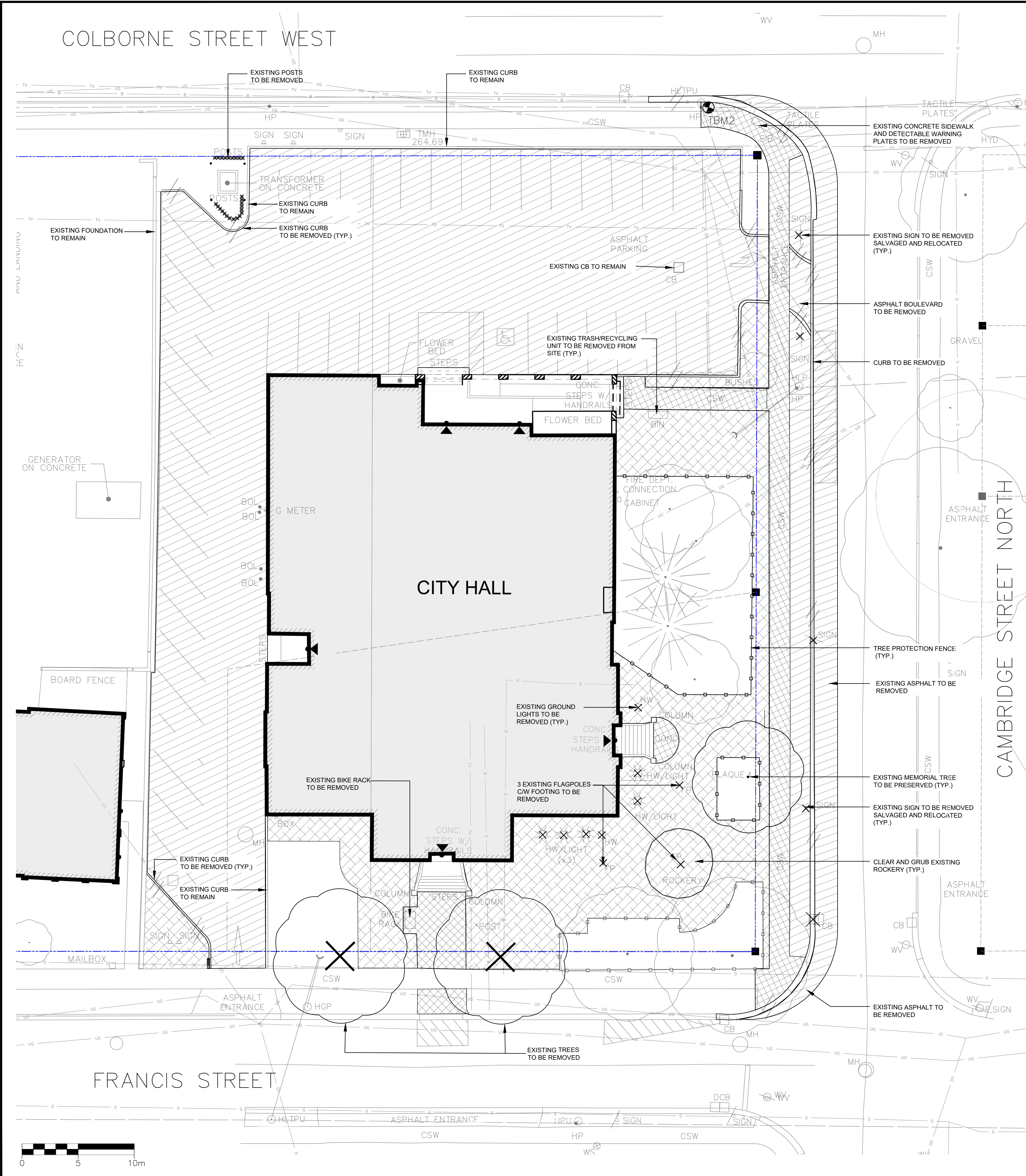
T: 905 697-4464  
415 Baseline Road West, 2nd Floor,  
Bowmanville, ON L1C 5M2 CANADA

ISSUED FOR 75% REVIEW

DATE: JANUARY 17, 2025

PLOT SCALE: 1:1 DATE PLOTTED: 2025-01-20

COLBORNE STREET WEST



1 TREE PROTECTION DETAIL  
N.T.S.

**LEGEND**

	TREE TO BE REMOVED
	ASPHALT TO BE PULVERIZED/REMOVED (TO BE CONFIRMED)
	CONCRETE TO BE REMOVED
	REMOVE PAVING STONES
	REMOVE PLANTING/SOD
	CURB AND GUTTER TO BE REMOVED
	PROPERTY LINE
	TREE PROTECTION FENCE
	BELL CABLE
	TV CABLE
	U/G HYDRO
	ENBRIDGE GAS



IT IS THE RESPONSIBILITY OF THE CONTRACTOR TO INFORM THEMSELVES OF EXISTING CONDITION, AND THE EXACT LOCATION OF, AND ASSUME ALL LIABILITY FOR DAMAGE TO ALL UTILITIES SERVICES AND STRUCTURES WHETHER ABOVE GROUND OR BELOW GRADE BEFORE COMMENCING THE WORK. SUCH INFORMATION IS NOT NECESSARILY SHOWN ON THE DRAWING, AND WHERE SHOWN, THE ACCURACY CANNOT BE GUARANTEED.

WITH THE SOLE EXCEPTION OF THE BENCHMARK(S) SPECIFICALLY DESCRIBED FOR THIS PROJECT, NO ELEVATION INDICATED OR ASSUMED HEREON IS TO BE USED AS A REFERENCE ELEVATION FOR ANY PURPOSE.

ALL DIMENSIONS AND INFORMATION SHALL BE CHECKED AND VERIFIED ON THE JOB AND ANY DISCREPANCIES MUST BE REPORTED TO THE MUNICIPALITY BEFORE COMMENCING THE WORK. DRAWINGS ARE NOT TO BE SCALED.

1	2025-01-17	PB	ISSUED FOR 75% REVIEW
	DATE	BY	ISSUES / REVISIONS

PROJECT:

**Kawartha Lakes**  
**Jump In**  
**CAMPUS BLOCK**  
**SITE BEAUTIFICATION**

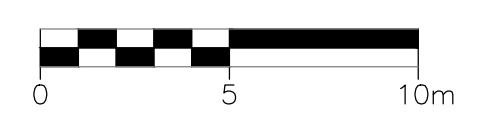
DRAWING:

**REMOVALS PLAN**

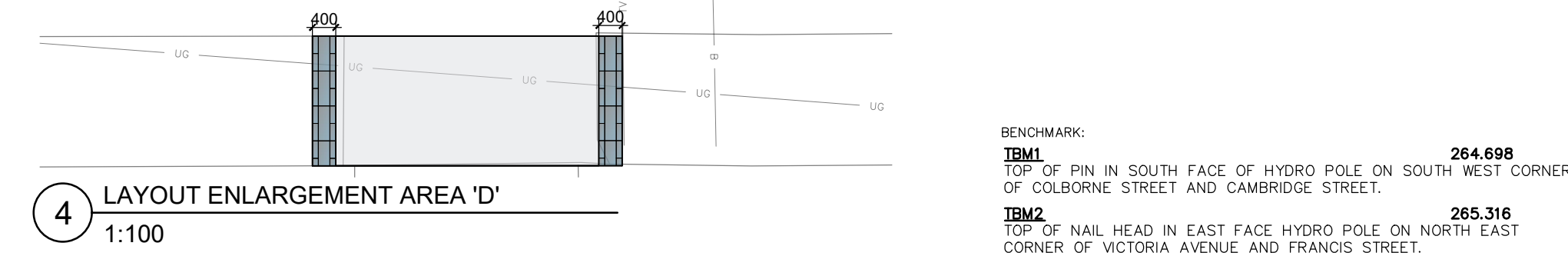
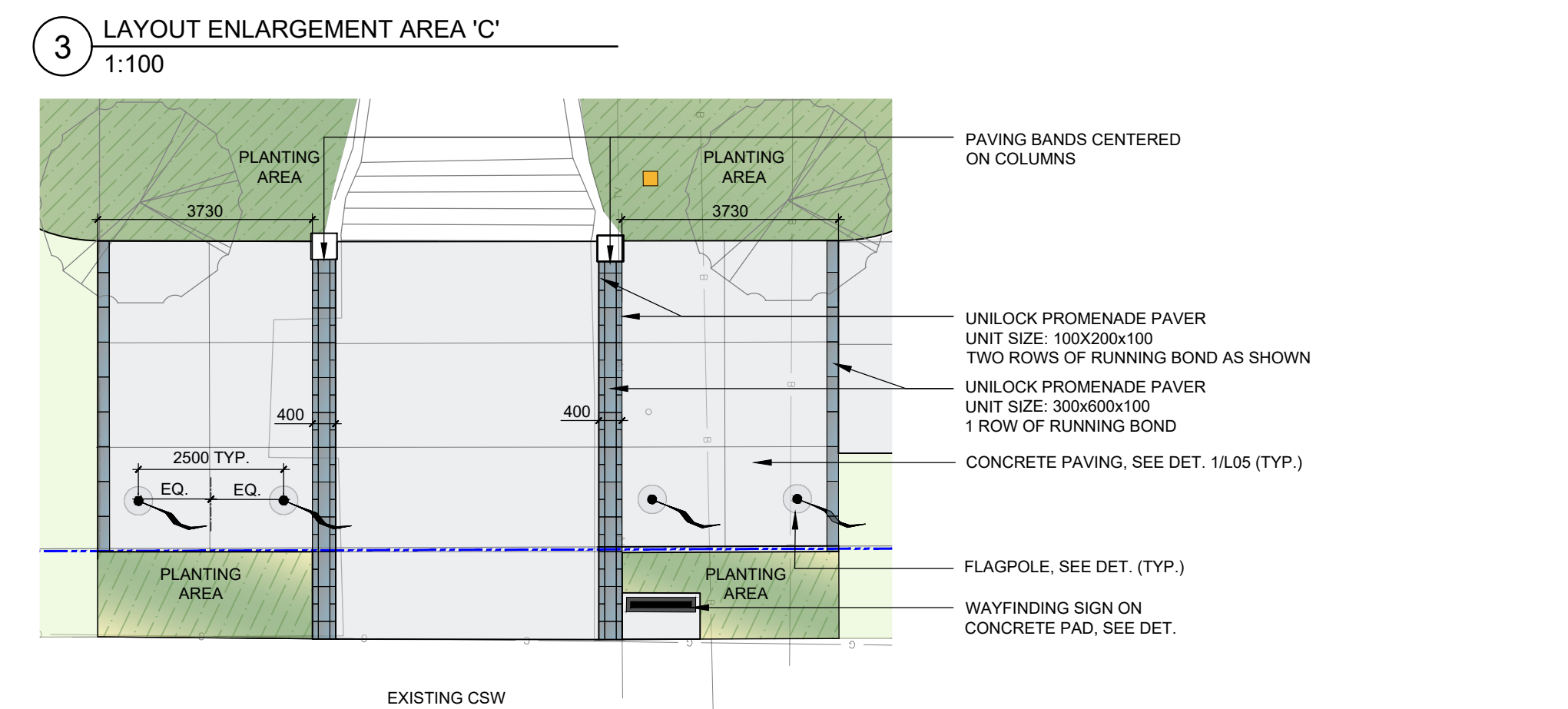
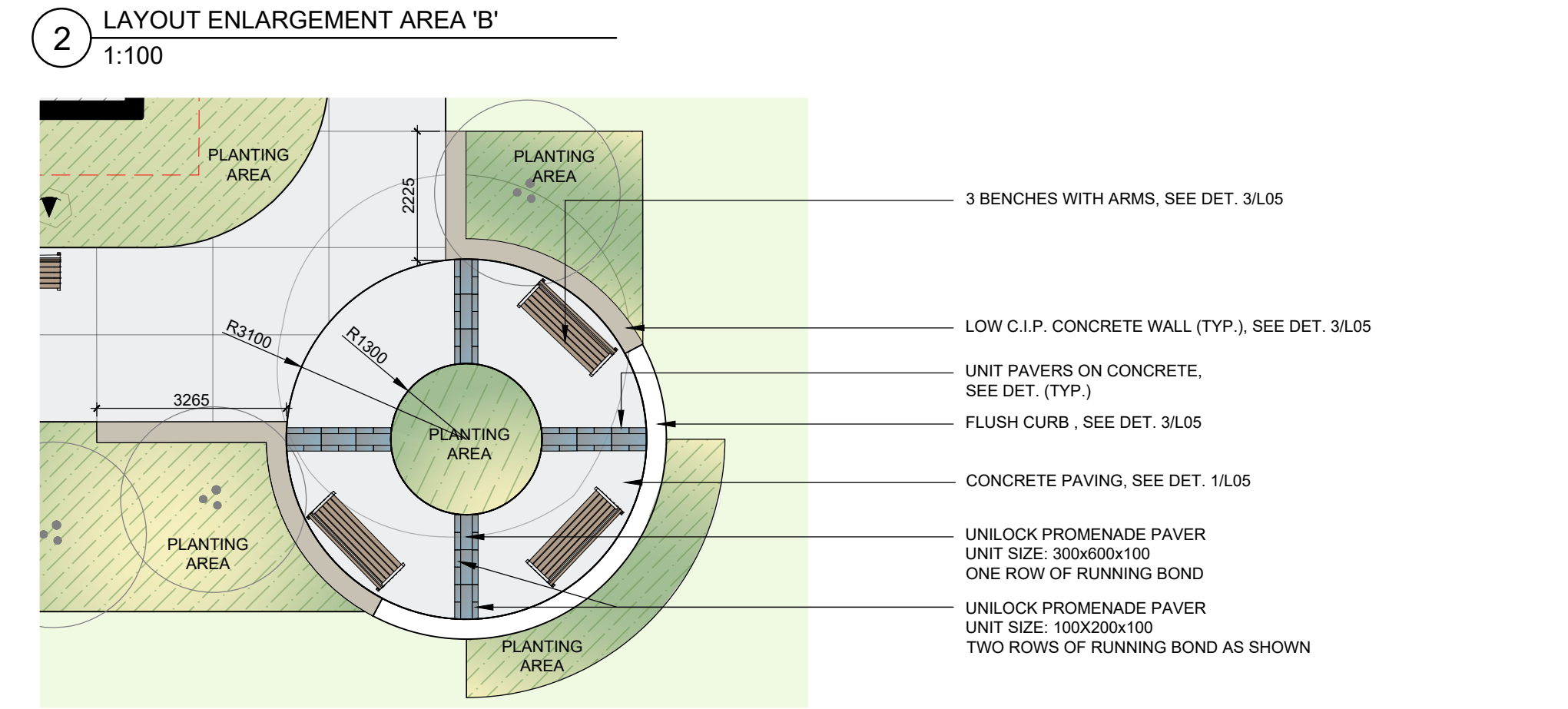
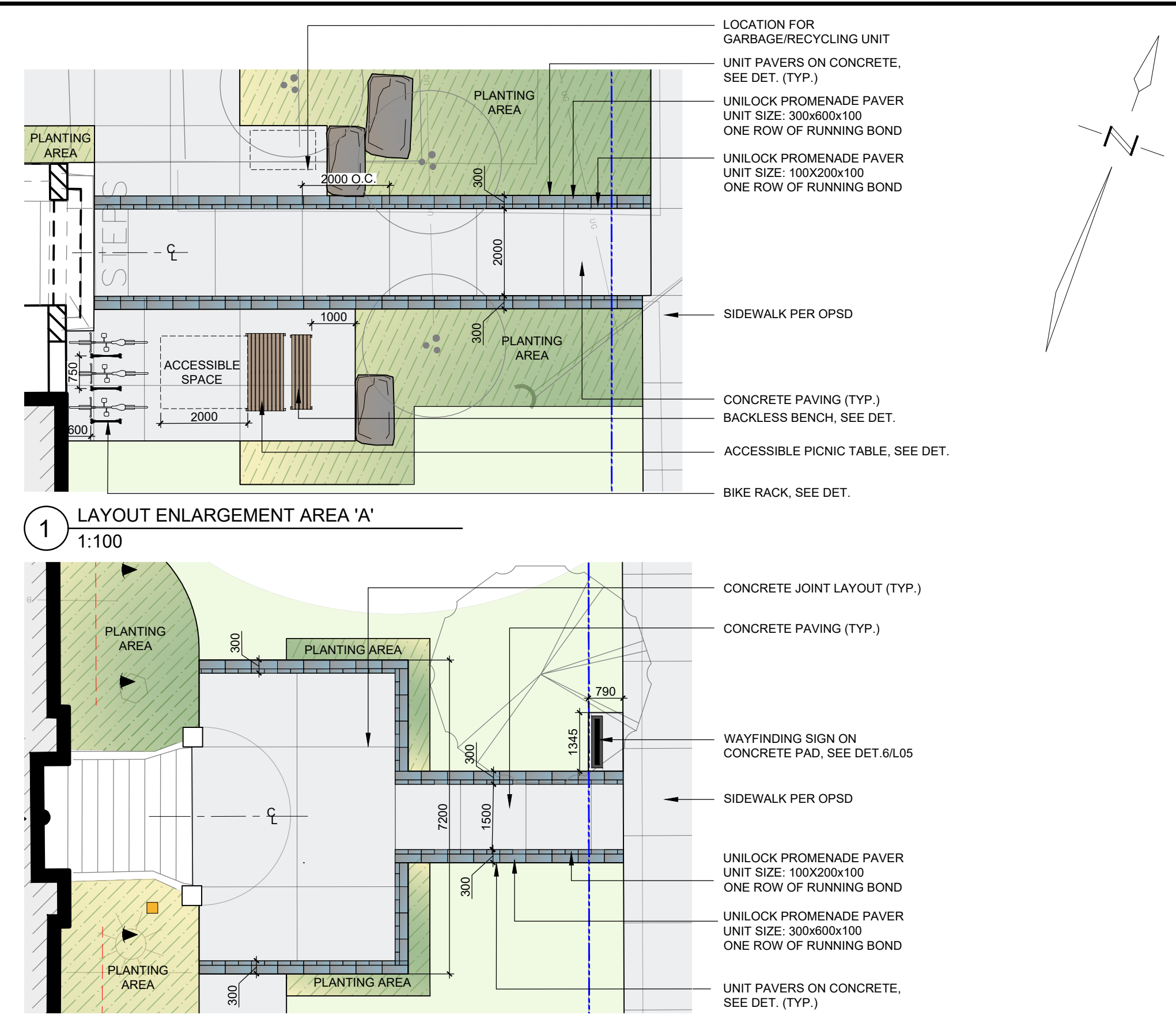
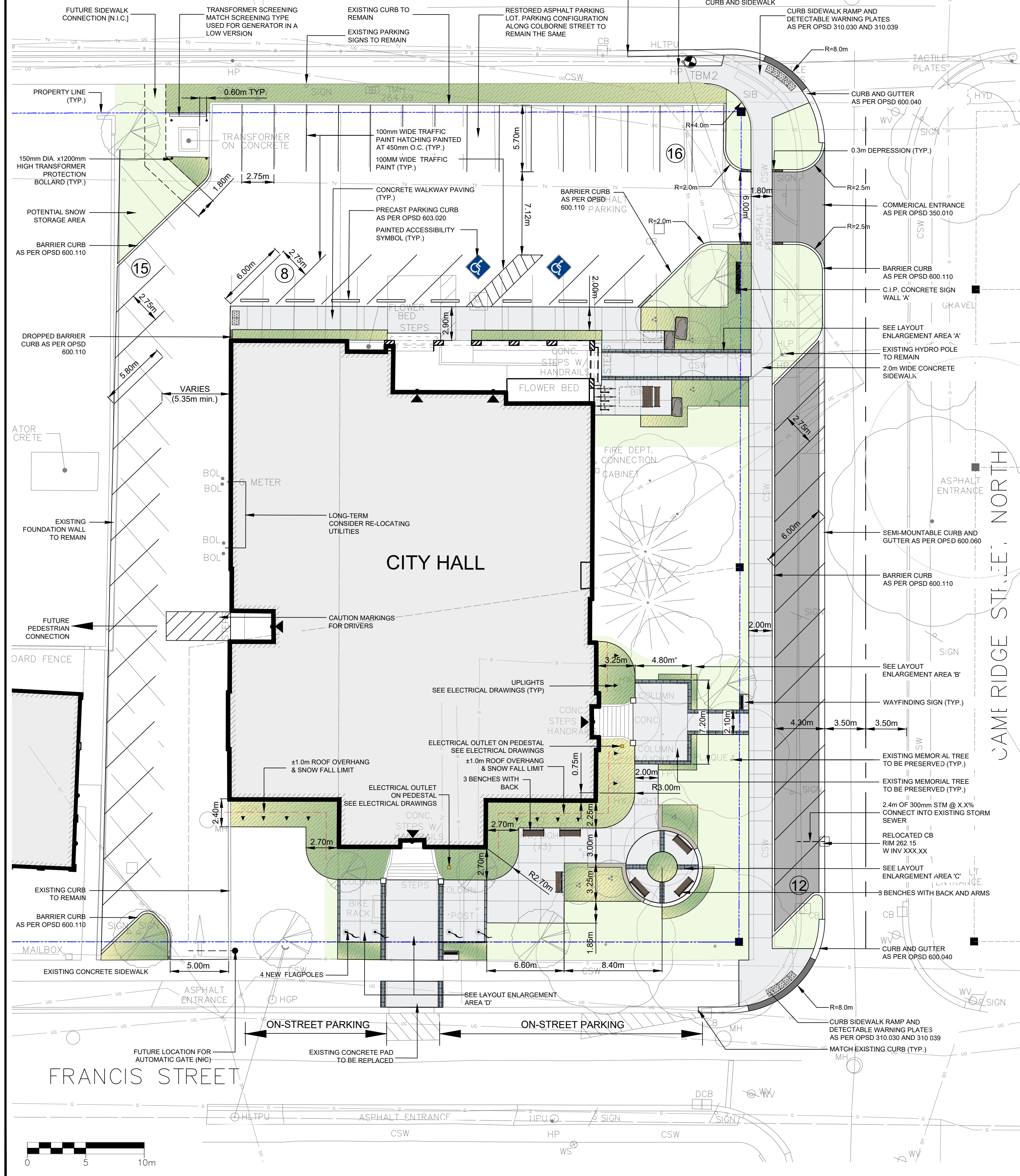
DRAWN BY:	CHECKED BY:	PROJECT
T. VALDOCK	P. BROCKS	C14-0659
DESIGNED BY:	APPROVED BY:	DRAWING No.
T. VALDOCK	L. CULLEN	
SCALE:	DATE:	
	1:200	JULY 2024

**L01**

BENCHMARK:  
**TBM1**  
 TOP OF PIN IN SOUTH FACE OF HYDRO POLE ON SOUTH WEST CORNER OF COLBORNE STREET AND CAMBRIDGE STREET. **264.698**  
**TBM2**  
 TOP OF MAIL HEAD IN EAST FACE HYDRO POLE ON NORTH EAST CORNER OF VICTORIA AVENUE AND FRANCIS STREET. **265.316**



COLBORNE STREET WEST



### LEGEND

- EXISTING TREE TO REMAIN
- DECIDUOUS TREE
- MULTI-STEM DECIDUOUS TREE
- CURB
- DROP CURB
- SOD AREA
- PLANTING AREA
- ASPHALT
- LOW C.I.P. CONCRETE SEATWALL see detail 3 on drawing L-05
- CONCRETE PAVING see detail 1 on drawing L-02
- DETECTABLE WARNING PLATES see detail 4 on drawing L-05
- UNIT PAVEMENT ACCENT PAVING see detail 2 on drawing L-05
- ACCESSIBLE TABLE AND BENCH see detail 3 and 4 on drawing L-06
- BENCH WITH BACK AND ARMS see detail 2 on drawing L-06
- BENCH WITH BACK see detail 2 on drawing L-06
- BIKE RACK see detail 5 on drawing L-06
- FLAGPOLE see detail 7 on drawing L-05
- UPLIGHT see electrical drawing
- ELECTRICAL OUTLET ON PEDESTAL see detail 8 on drawing L-05
- ARMSTONE see detail 5 on drawing L-05
- C.I.P. CONCRETE SIGN WALL see detail 8 on drawing L-05
- WAYFINDING SIGN ON CONCRETE PAD see detail 6 on drawing L-05

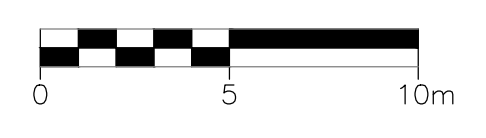
**CIMA+**  
2nd Floor - 115 Sandvine Road West, Boomeraville, ON L1C 2A2  
Phone: 905-897-4464 www.cima.ca

IT IS THE RESPONSIBILITY OF THE CONTRACTOR TO INFORM THEMSELVES OF EXISTING CONDITION, AND THE EXACT LOCATION OF, AND ASSUME ALL LIABILITY FOR DAMAGE TO ALL UTILITIES SERVICES AND STRUCTURES WHETHER ABOVE GROUND OR BELOW GRADE BEFORE COMMENCING THE WORK. SUCH INFORMATION IS NOT NECESSARILY SHOWN ON THE DRAWING, AND WHERE SHOWN, THE ACCURACY CANNOT BE GUARANTEED.

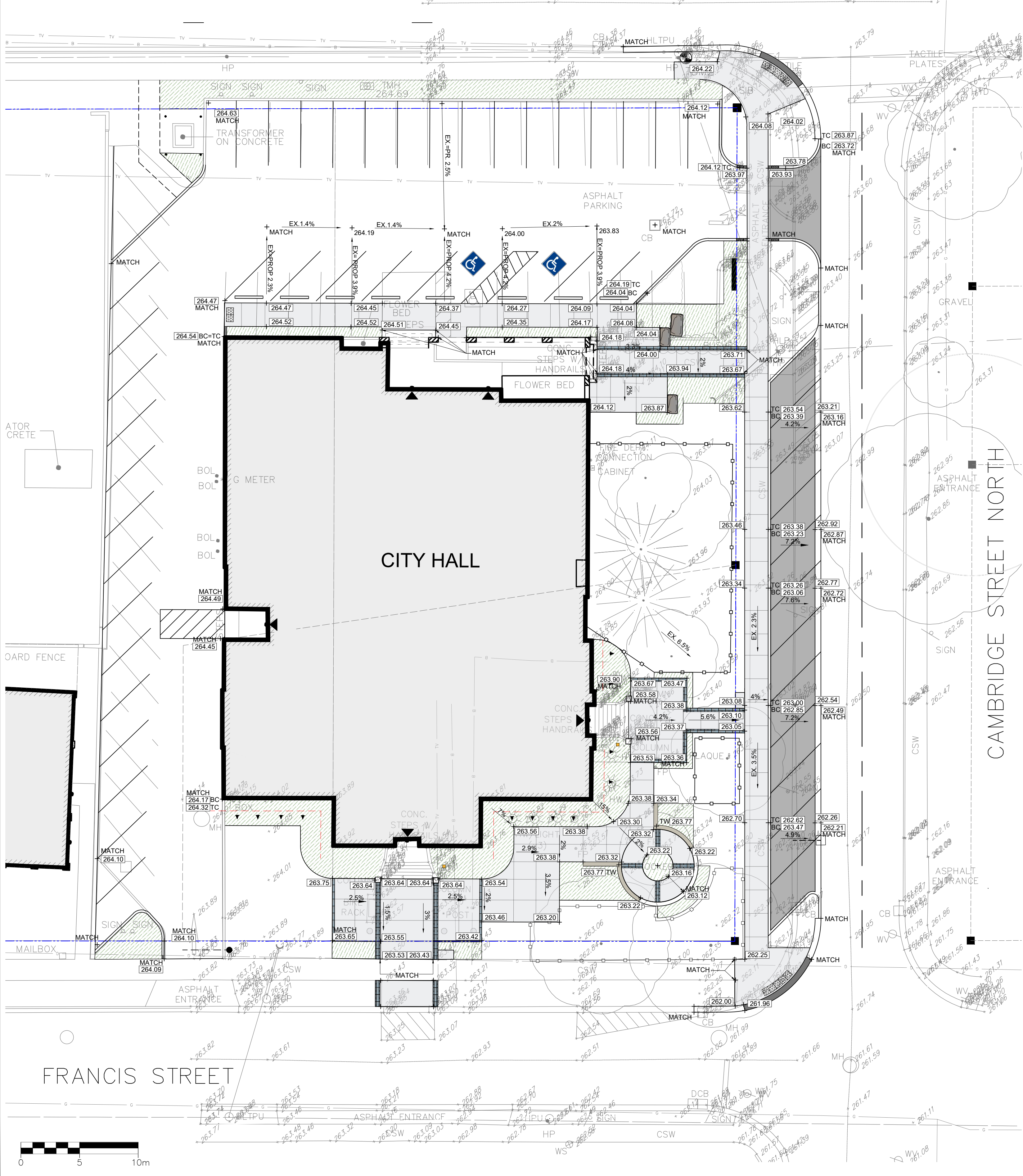
WITH THE SOLE EXCEPTION OF THE BENCHMARK(S) SPECIFICALLY DESCRIBED FOR THIS PROJECT, NO ELEVATION INDICATED OR ASSUMED HEREON IS TO BE USED AS A REFERENCE ELEVATION FOR ANY PURPOSE.

ALL DIMENSIONS AND INFORMATION SHALL BE CHECKED AND VERIFIED ON THE JOB AND ANY DISCREPANCIES MUST BE REPORTED TO THE MUNICIPALITY BEFORE COMMENCING THE WORK. DRAWINGS ARE NOT TO BE SCALED.

ISSUED FOR 75% REVIEW		
DATE	BY	ISSUES / REVISIONS
1	2025-01-17	PB
PROJECT:		
 <b>CAMPUS BLOCK</b> <b>SITE BEAUTIFICATION</b>		
DRAWING:		
<b>SURFACE TREATMENT</b> <b>FURNITURE AND LAYOUT</b> <b>PLAN</b>		
DRAWN BY:	CHECKED BY:	PROJECT
T. VALDOCK	P. BROCKS	C14-0659
DESIGNED BY:	APPROVED BY:	DRAWING No.
T. VALDOCK	L. CULLEN	
SCALE:	DATE:	
	1:200	JULY 2024



COLBORNE STREET WEST



- LEGEND**
- EXISTING GRADE
  - PROPOSED GRADE
  - EXISTING TREE TO REMAIN
  - DECIDUOUS TREE
  - MULTI-STEM DECIDUOUS TREE
  - CURB
  - DROP CURB
  - PLANTING AREA
  - ASPHALT
  - LOW C.I.P. CONCRETE SEATWALL
  - CONCRETE PAVING
  - DETECTABLE WARNING PLATES
  - UNIT PAVER ACCENT PAVING
  - FLAGPOLE FOOTING
  - UPLIGHT  
see electrical drawing
  - ELECTRICAL OUTLET ON PEDESTAL  
see electrical drawing
  - ARMOURSTONE
  - C.I.P. CONCRETE SIGN WALL  
see detail 6 on drawing L-05
  - WAYFINDING SIGN ON CONCRETE  
PAD see detail 6 on drawing L-05



IT IS THE RESPONSIBILITY OF THE CONTRACTOR TO INFORM THEMSELVES OF EXISTING CONDITION, AND THE EXACT LOCATION OF, AND ASSUME ALL LIABILITY FOR DAMAGE TO ALL UTILITIES SERVICES AND STRUCTURES WHETHER ABOVE GROUND OR BELOW GRADE BEFORE COMMENCING THE WORK. SUCH INFORMATION IS NOT NECESSARILY SHOWN ON THE DRAWING, AND WHERE SHOWN, THE ACCURACY CANNOT BE GUARANTEED.

WITH THE SOLE EXCEPTION OF THE BENCHMARK(S) SPECIFICALLY DESCRIBED FOR THIS PROJECT, NO ELEVATION INDICATED OR ASSUMED HEREON IS TO BE USED AS A REFERENCE ELEVATION FOR ANY PURPOSE.

ALL DIMENSIONS AND INFORMATION SHALL BE CHECKED AND VERIFIED ON THE JOB AND ANY DISCREPANCIES MUST BE REPORTED TO THE MUNICIPALITY BEFORE COMMENCING THE WORK. DRAWINGS ARE NOT TO BE SCALED.

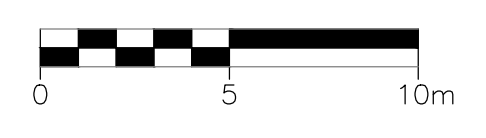
1	2025-01-17	PB	ISSUED FOR 75% REVIEW
	DATE	BY	ISSUES / REVISIONS

PROJECT:  
**CAMPUS BLOCK**  
**SITE BEAUTIFICATION**

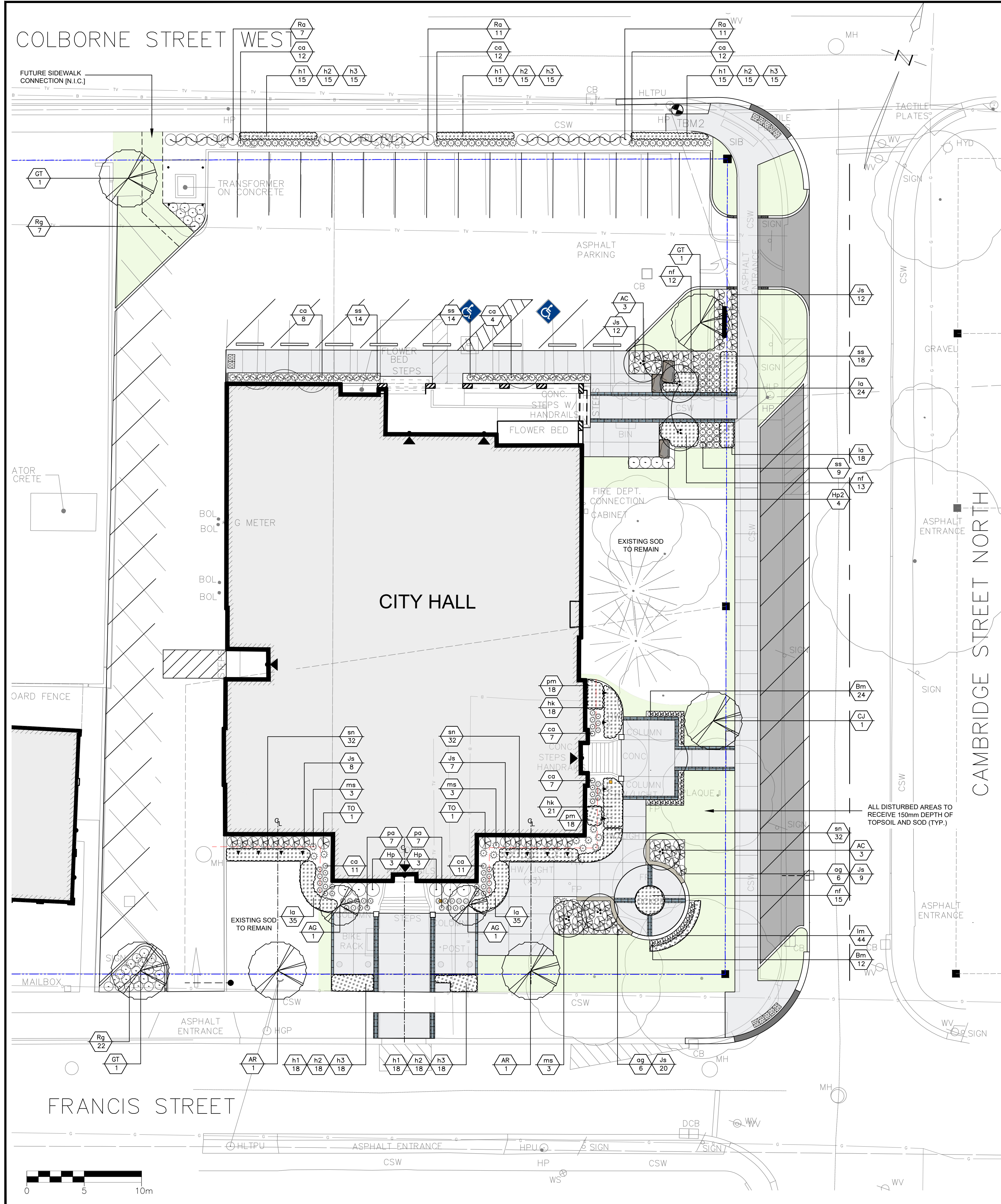
DRAWING:  
**GRADING PLAN**

DRAWN BY: T. VALDOCK	CHECKED BY: P. BROCKS	PROJECT C14-0659
DESIGNED BY: T. VALDOCK	APPROVED BY: L. CULLEN	DRAWING No.
SCALE: 1:200	DATE: JULY 2024	<b>L03</b>

BENCHMARK:  
**BM1**  
 TOP OF PIN IN SOUTH FACE OF HYDRO POLE ON SOUTH WEST CORNER OF COLBORNE STREET AND CAMBRIDGE STREET. **264.698**  
**BM2**  
 TOP OF MAIL HEAD IN EAST FACE HYDRO POLE ON NORTH EAST CORNER OF VICTORIA AVENUE AND FRANCIS STREET. **265.316**



DATE: 07/04/2024 FILE: Z:\Users\CAT\p0431\CT-0659-04-001-Site Design & CA (Kawartha Lakes)\3D\JTS\03\130\_000\_014-0659\_LANDSCAPE\_PLAN.dwg



**Plant List**

DECIDUOUS TREES						
Key	Qty	Botanical Name	Common Name	Size	Condition	Spacing
AR	2	Acer rubrum Redpointe® (Frank Jr.)	Redpointe® Maple	60mm	W.B.	
AC	6	Amelanchier canadensis	Serviceberry - Multi-stem	240mm	W.B.	
AG	2	Amelanchier x grandiflora Robin Hill®	Robin Hill Serviceberry - Treform	45mm	W.B.	
CJ	1	Cercidiphyllum japonicum	Katsura Tree	50mm	W.B.	
GT	3	Gleditsia triacanthos Shademaster®	Shademaster Honeylocust	50mm	W.B.	
CONIFEROUS TREES						
Key	Qty	Botanical Name	Common Name	Size	Condition	
TO	2	Thuja occidentalis Holmstrup®	Holmstrup Cedar	150cm	W.B.	
SHRUBS						
Key	Qty	Botanical Name	Common Name	Size	Condition	
Bm	36	Buxus microphylla 'Green Gem'	Green Gem Boxwood	40cm	3 gal. pot	450mm o.c.
Hp2	4	Hydrangea paniculata 'SMHPLQF'	Little Quick Fire Hydrangea	60cm	2 gal. pot	900mm o.c.
Hp	6	Hydrangea paniculata 'Quick Fire (Bulk)'	Quick Fire Hydrangea	80cm	7 gal. pot	1200mm o.c.
J5	68	Juniperus sabina 'Skandia'	Skandia Juniper	40cm	3 gal. pot	900mm o.c.
Rg	29	Rhus aromatica 'Gro-Low'	Fragrant Sumac	50cm	pot	900mm o.c.
Ra	25	Ribes alpinum	Alpine Currant	50 cm	3 gal. pot	900mm o.c.
ORNAMENTAL GRASSES						
Key	Qty	Botanical Name	Common Name	Size	Condition	
ca	84	Calamagrostis acutiflora 'Karl Foerster'	Feather Reed Grass	1 gal. pot		600mm o.c.
lm	44	Liriodie muscari 'Big Blue'	Start Lily Turf	1 gal. pot		300mm o.c.
ms	9	Miscanthus sinensis 'Morning Light'	Morning Light Maiden Grass	1 gal. pot		900mm o.c.
ss	58	Schizachyrium scoparium	Little Bluestem 'Standing Ovation'	1 gal. pot		600mm o.c.
PERENNIALS						
Key	Qty	Botanical Name	Common Name	Size	Condition	
ag	12	Allium giganteum	Ornamental Onion	15cm pot		300mm o.c.
ht	81	Hemerocallis 'Joan Senior'	Joan Senior Daylily	15cm pot		300mm o.c.
h2	81	Hemerocallis 'Passionate Returns'	Passionate Returns' Daylily	15cm pot		300mm o.c.
h3	81	Hemerocallis 'Big Time Happy'	Big Time Happy Daylily	15cm pot		300mm o.c.
hk	39	Hosta 'Krossa Regal'	Krossa Regal Hosta	1 gal. pot		600mm o.c.
la	112	Lavandula angustifolia 'Hidcote Blue'	Hidcote Blue Lavender	1 gal. pot		450mm o.c.
nf	45	Nepeta faassenii 'Walker's Low'	Walker's Low Catmint	1 gal. pot		600mm o.c.
pa	14	Pennisetum alopecuroides 'Harmeln'	Dwarf Fountain Grass	1 gal. pot		300mm o.c.
pm	36	Polygonatum multiflorum	Solomon's Seal	1 gal. pot		300mm o.c.
sn	96	Salvia nemorosa 'Mainacht'	May Night Meadow Sage	15cm pot		450mm o.c.

**LEGEND**

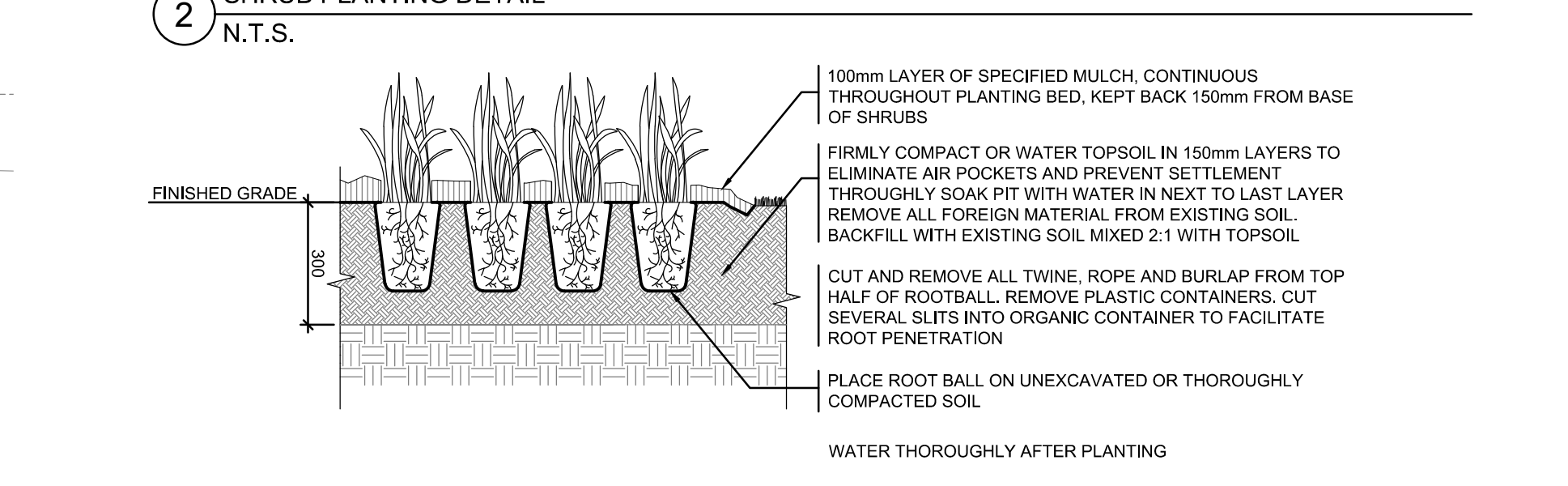
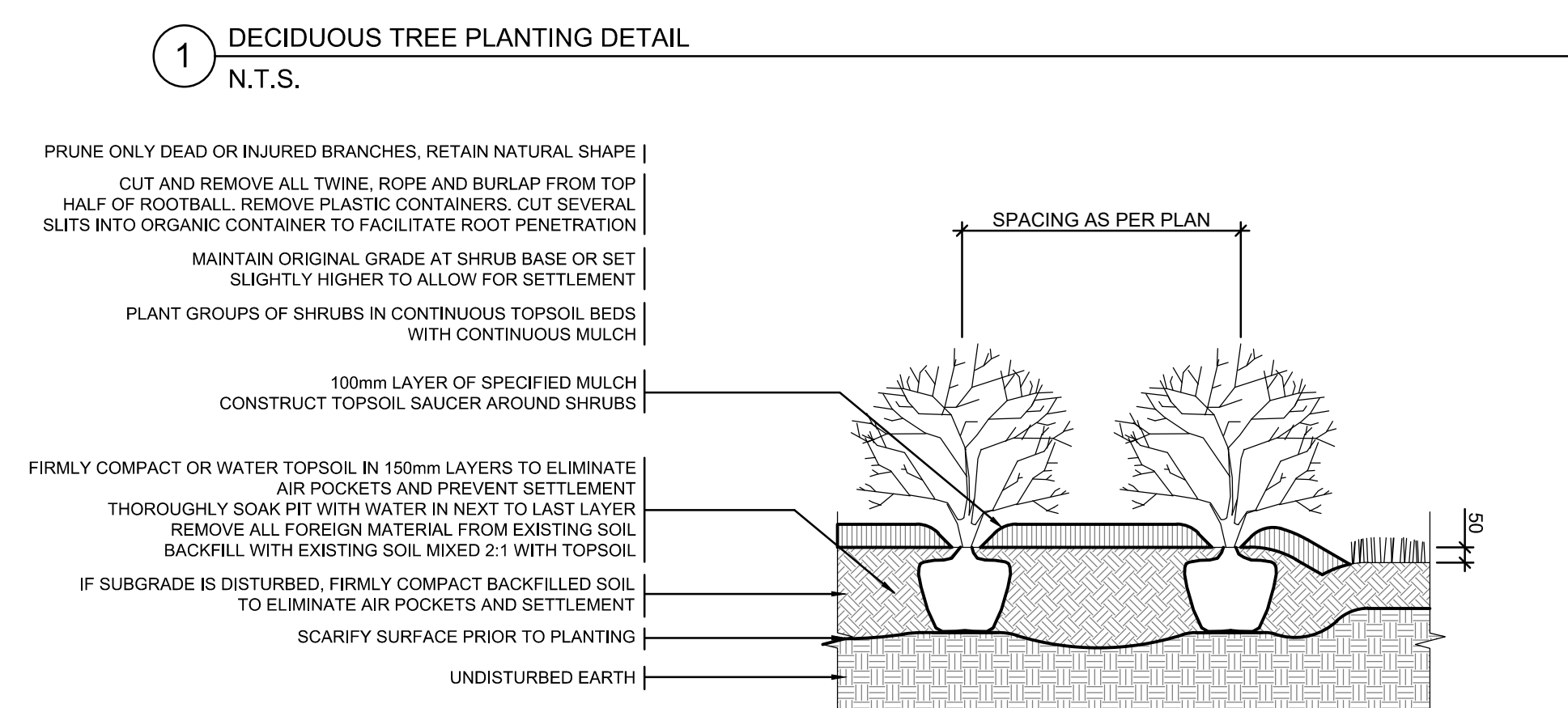
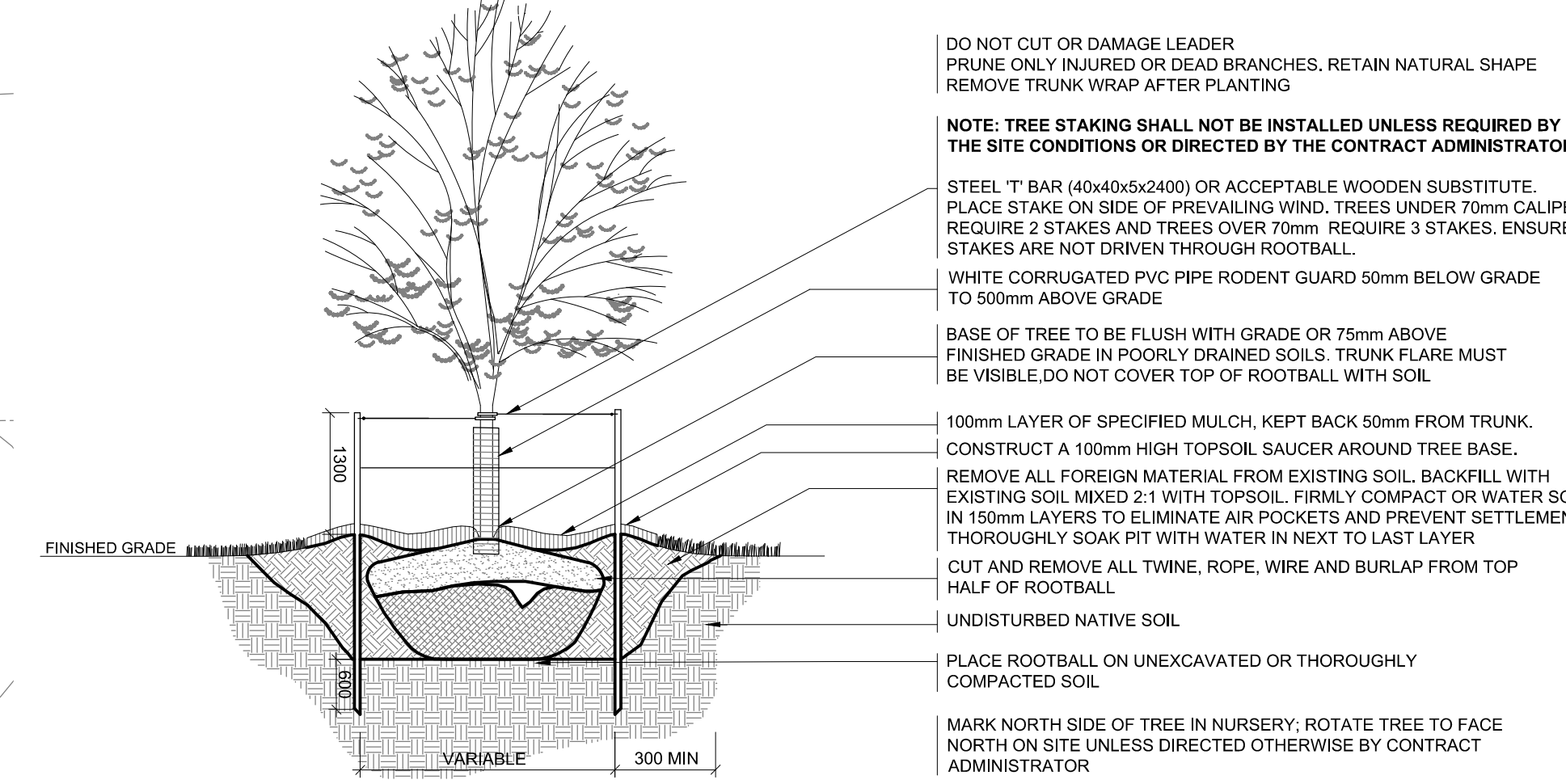
- EXISTING TREE TO REMAIN
- DECIDUOUS TREE
- MULTI-STEM DECIDUOUS TREE
- DECIDUOUS SHRUB
- CONIFEROUS SHRUB
- ORNAMENTAL GRASS
- CURB
- DROP CURB
- SOD AREA
- ASPHALT
- LOW C.I.P. CONCRETE SEATWALL see detail 3 on drawing L-05
- CONCRETE PAVING see detail 1 on drawing L-02
- DETECTABLE WARNING PLATES see detail 4 on drawing L-05
- UNIT PAVER ACCENT PAVING see detail 2 on drawing L-05
- ACCESSIBLE TABLE AND BENCH see detail 3 and 4 on drawing L-06
- BENCH WITH BACK AND ARMS see detail 1 on drawing L-06
- BENCH WITH BACK see detail 2 on drawing L-06
- BIKE RACK see detail 5 on drawing L-06
- FLAGPOLE see detail 7 on drawing L-05
- UPLIGHT see electrical drawing
- ELECTRICAL OUTLET ON PEDESTAL see electrical drawing
- ARMOURSTONE see detail 5 on drawing L-05
- C.I.P. CONCRETE SIGN WALL see detail 8 on drawing L-05
- WAYFINDING SIGN ON CONCRETE PAD see detail 6 on drawing L-05

**CIMA+**  
2nd Floor - 415 Sandvine Road West, Boomeraville, ON L1C 0A2  
Phone: 905-697-4464

IT IS THE RESPONSIBILITY OF THE CONTRACTOR TO INFORM THEMSELVES OF EXISTING CONDITION, AND THE EXACT LOCATION OF, AND ASSUME ALL LIABILITY FOR DAMAGE TO ALL UTILITIES SERVICES AND STRUCTURES WHETHER ABOVE GROUND OR BELOW GRADE BEFORE COMMENCING THE WORK. SUCH INFORMATION IS NOT NECESSARILY SHOWN ON THE DRAWING, AND WHERE SHOWN, THE ACCURACY CANNOT BE GUARANTEED.

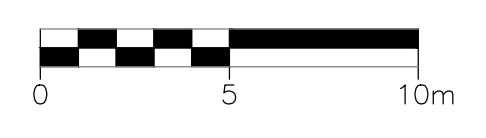
WITH THE SOLE EXCEPTION OF THE BENCHMARK(S) SPECIFICALLY DESCRIBED FOR THIS PROJECT, NO ELEVATION INDICATED OR ASSUMED HEREON IS TO BE USED AS A REFERENCE ELEVATION FOR ANY PURPOSE.

ALL DIMENSIONS AND INFORMATION SHALL BE CHECKED AND VERIFIED ON THE JOB AND ANY DISCREPANCIES MUST BE REPORTED TO THE MUNICIPALITY BEFORE COMMENCING THE WORK. DRAWINGS ARE NOT TO BE SCALED.



BENCHMARK:  
TBM1 TOP OF PIN IN SOUTH FACE OF HYDRO POLE ON SOUTH WEST CORNER OF COLBORNE STREET AND CAMBRIDGE STREET. 264.698  
TBM2 TOP OF NAIL HEAD IN EAST FACE HYDRO POLE ON NORTH EAST CORNER OF VICTORIA AVENUE AND FRANCIS STREET. 265.316


1	2025-01-17	PB	ISSUED FOR 75% REVIEW
DATE	BY	ISSUES / REVISIONS	
PROJECT:			
 <b>CAMPUS BLOCK</b> <b>SITE BEAUTIFICATION</b>			
DRAWING:			
<b>PLANTING PLAN</b>			
DRAWN BY:	CHECKED BY:	PROJECT	
T. VALDOCK	P. BROCKS	C14-0659	
DESIGNED BY:	APPROVED BY:	DRAWING No.	
T. VALDOCK	L. CULLEN		
SCALE:	DATE:		
	1:200	JULY 2024	



DATE: 07/07/2024 FILE: Z:\CIMA-CAD\Projects\C14-0659-001-001-Site Beautification\Drawings\Site\01-Planting Plan.dwg USER: JLD/07/07/2024 10:59 AM



**MBE-2300-00015** **ICONIC**



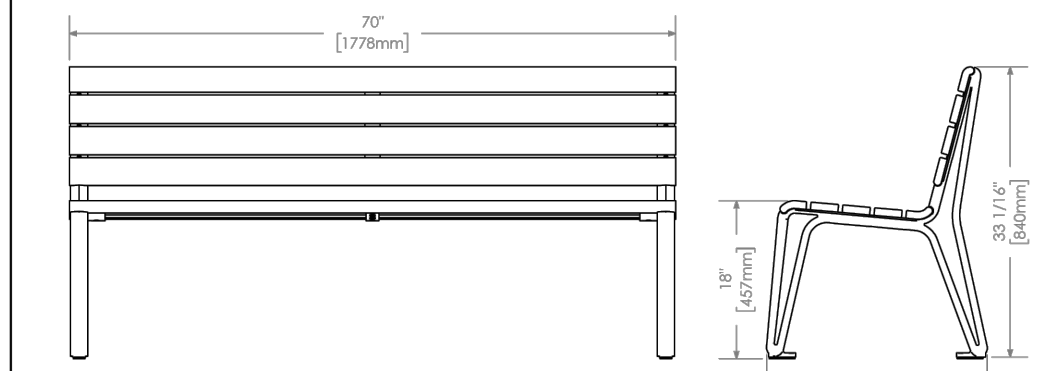
**MATERIALS:** The legs are aluminum castings. The boards are made from Ipe wood. All brackets are made of steel.

**FINISH:** The Maglin Powdercoat System provides a durable finish on all aluminum castings. The wood boards are treated with penetrating sealers. The steel brackets are e-coated and powdercoated.

**INSTALLATION:** The bench is delivered pre-assembled. The legs have 7/16" holes for anchoring.

**TO SPECIFY:** Select MBE-2300-00015  
Choose:  
- Powdercoat Color

HEIGHT: 33 1/8" (84cm)    LENGTH: 70" (177.8cm)    DEPTH: 25 1/2" (64.7cm)    WEIGHT: 115 lbs (52 kg)




**MAGLIN**  
Site Furniture

T 800 716 6656  
F 877 265 5853  
www.maglin.com  
sales@maglin.com

All drawings, specifications, design and details on this page remain the property of Maglin Site Furniture Inc. and may not be used without Maglin authorization. Details and specifications may vary due to continuing improvements of our products.

1 BENCH WITH BACK  
N.T.S.

**MBE-2300-00017** **ICONIC**



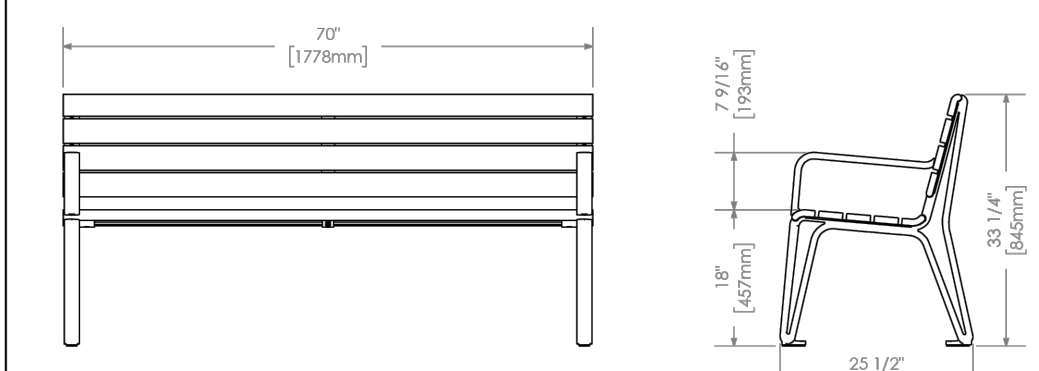
**MATERIALS:** The legs and arms are aluminum castings. The boards are made from Ipe wood. All brackets are made of steel.

**FINISH:** The Maglin Powdercoat System provides a durable finish on all aluminum castings. The wood boards are treated with penetrating sealers. The steel brackets are e-coated and powdercoated.

**INSTALLATION:** The bench is delivered pre-assembled. The legs have 7/16" holes for anchoring.

**TO SPECIFY:** Select MBE-2300-00017  
Choose:  
- Powdercoat Color

HEIGHT: 33 1/4" (84.5cm)    LENGTH: 70" (177.8cm)    DEPTH: 25 1/2" (64.7cm)    WEIGHT: 122.5 lbs (55.6kg)



**MAGLIN**  
Site Furniture

T 800 716 6656  
F 877 265 5853  
www.maglin.com  
sales@maglin.com

All drawings, specifications, design and details on this page remain the property of Maglin Site Furniture Inc. and may not be used without Maglin authorization. Details and specifications may vary due to continuing improvements of our products.

2 BENCH WITH BACK AND ARMS  
N.T.S.

**MBE-2300-00025** **ICONIC**



**MATERIALS:** The legs are aluminum castings. The boards are made from Ipe wood. All brackets are made of steel.

**FINISH:** The Maglin Powdercoat System provides a durable finish on all aluminum castings. The wood boards are treated with penetrating sealers. The steel brackets are e-coated and powdercoated.

**INSTALLATION:** The bench is delivered pre-assembled. The legs have 7/16" holes for anchoring.

**TO SPECIFY:** Select MBE-2300-00025  
Choose:  
- Powdercoat Color

HEIGHT: 18" (45.7cm)    LENGTH: 70" (177.8cm)    DEPTH: 20 1/8" (50.9cm)    WEIGHT: 80 lbs (36.3kg)



**MAGLIN**  
Site Furniture

T 800 716 6656  
F 877 265 5853  
www.maglin.com  
sales@maglin.com

All drawings, specifications, design and details on this page remain the property of Maglin Site Furniture Inc. and may not be used without Maglin authorization. Details and specifications may vary due to continuing improvements of our products.

3 BACKLESS BENCH  
N.T.S.

**MTB-2300-00004** **ICONIC**



**MATERIALS:** The legs are aluminum castings. The boards are made from thermally modified Ash wood. All brackets are made of steel.

**FINISH:** The Maglin Powdercoat System provides a durable finish on all aluminum castings. The wood boards are treated with penetrating sealers. The steel brackets are e-coated and powdercoated.

**INSTALLATION:** The table is delivered pre-assembled. The legs have 7/16" holes for anchoring.

**TO SPECIFY:** Select MTB-2300-00004  
Choose:  
- Powdercoat Color

HEIGHT: 30" (76.2cm)    LENGTH: 70" (177.8cm)    DEPTH: 35 9/16" (90.3cm)    WEIGHT: 110 lbs (50kg)




**MAGLIN**  
Site Furniture

T 800 716 6656  
F 877 265 5853  
www.maglin.com  
sales@maglin.com

All drawings, specifications, design and details on this page remain the property of Maglin Site Furniture Inc. and may not be used without Maglin authorization. Details and specifications may vary due to continuing improvements of our products.

4 PICNIC TABLE  
N.T.S.

**MBR-2300-00001** **ICONIC**



**Sustainability Facts**  
Unit: One (1) MBR-2300-00001 Bike Rack

Carbon footprint (GWP) 129 kg CO<sub>2</sub>-Eq  
Measured in kilograms of carbon dioxide equivalent.

Total energy use (TPE) 2480 MJ-Eq  
Measured in megajoules of energy equivalent.

Water use (WUP) 1.9 m<sup>3</sup> water  
Measured in cubic metres of water.

Material recyclability 100%

LEED v4.1 Credits  
Type III Environmental Product Declaration  
Material inventory  
Low VOC finishes  
Free of Red List substances

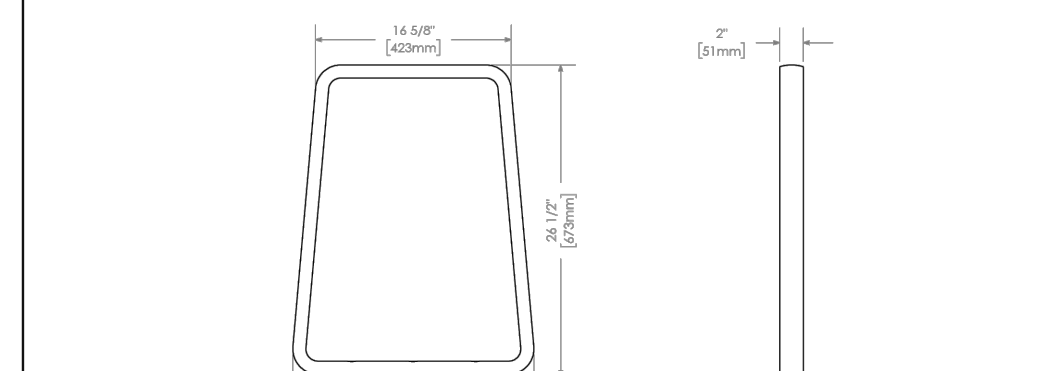
**DESCRIPTION:** 2300 Series - Iconic Bike Rack: Cast Aluminum, Surface Mount, 2 Bike Configuration

**FINISH:** The Maglin Powdercoat System provides a durable finish on all aluminum castings.

**INSTALLATION:** The bike rack is delivered in parts. Reference INSTALL\_MBR-2300-00001 PDF for more information.

**TO SPECIFY:** Select MBR-2300-00001  
Choose:  
- Powdercoat Color

HEIGHT: 26 1/2" (67.3cm)    LENGTH: 20 1/2" (52cm)    WIDTH: 2" (51mm)    WEIGHT: 18 lbs (8kg)

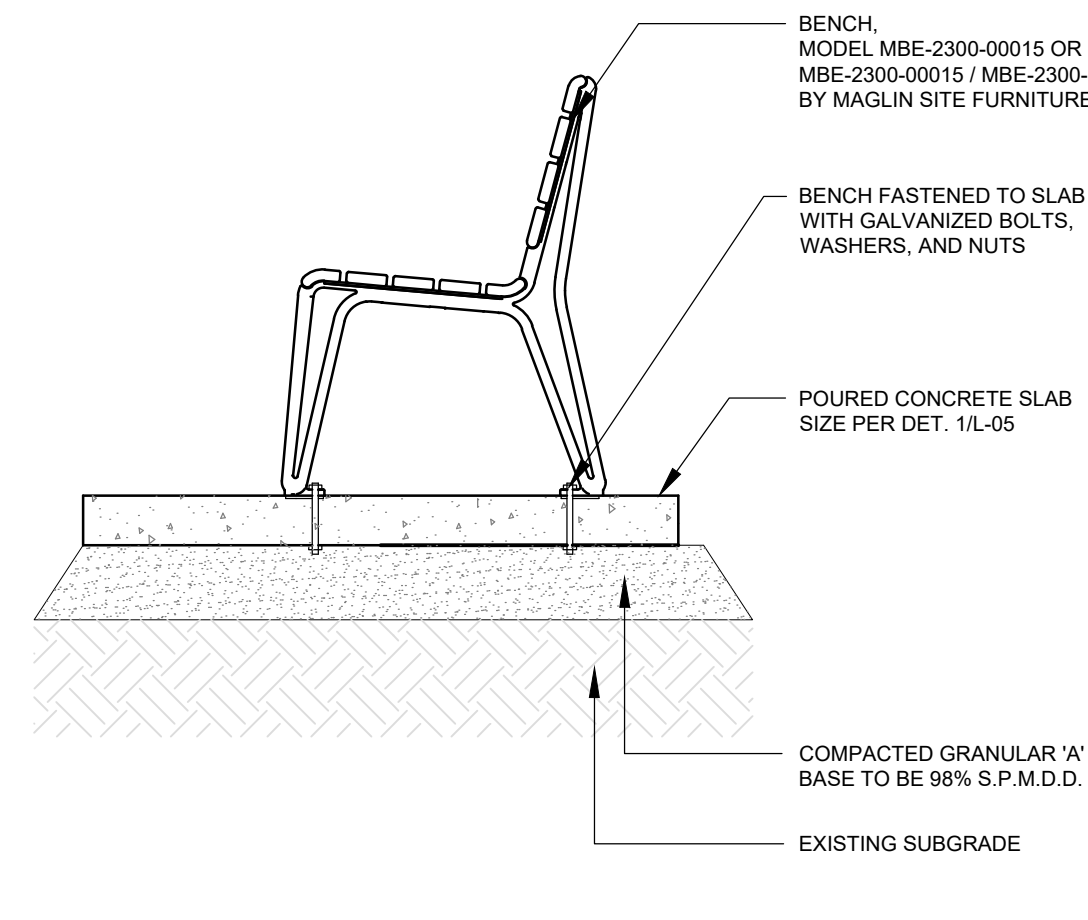


**MAGLIN**  
Site Furniture

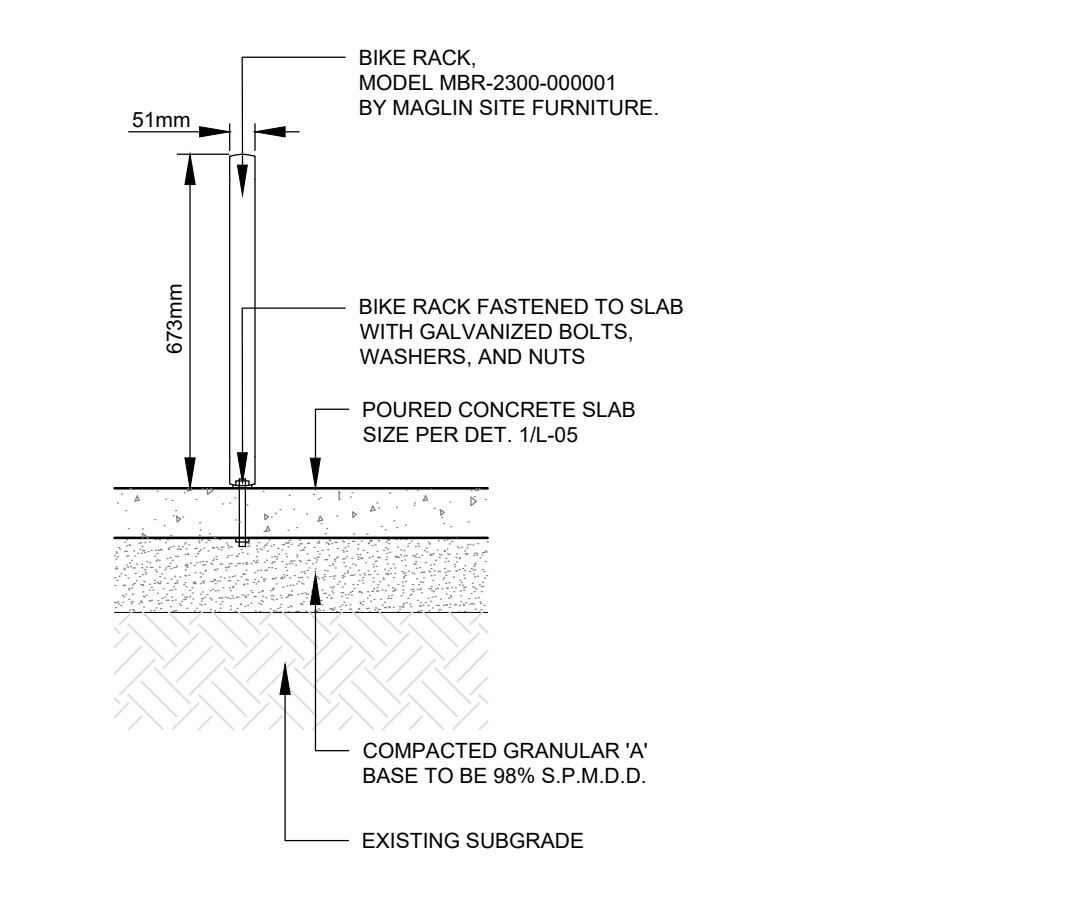
T 800 716 6656  
F 877 265 5853  
www.maglin.com  
sales@maglin.com

All drawings, specifications, design and details on this page remain the property of Maglin Site Furniture Inc. and may not be used without Maglin authorization. Details and specifications may vary due to continuing improvements of our products.

5 BIKE RACK  
N.T.S.



6 BENCH FASTENING DETAIL  
N.T.S.



7 BIKE RACK FASTENING DETAIL  
N.T.S.



IT IS THE RESPONSIBILITY OF THE CONTRACTOR TO INFORM THEMSELVES OF EXISTING CONDITION, AND THE EXACT LOCATION OF, AND ASSUME ALL LIABILITY FOR DAMAGE TO ALL UTILITIES SERVICES AND STRUCTURES WHETHER ABOVE GROUND OR BELOW GRADE BEFORE COMMENCING THE WORK. SUCH INFORMATION IS NOT NECESSARILY SHOWN ON THE DRAWING, AND WHERE SHOWN, THE ACCURACY CANNOT BE GUARANTEED.

WITH THE SOLE EXCEPTION OF THE BENCHMARK(S) SPECIFICALLY DESCRIBED FOR THIS PROJECT, NO ELEVATION INDICATED OR ASSUMED HEREON IS TO BE USED AS A REFERENCE ELEVATION FOR ANY PURPOSE.

ALL DIMENSIONS AND INFORMATION SHALL BE CHECKED AND VERIFIED ON THE JOB AND ANY DISCREPANCIES MUST BE REPORTED TO THE MUNICIPALITY BEFORE COMMENCING THE WORK. DRAWINGS ARE NOT TO BE SCALED.

1	2025-01-17	PB	ISSUED FOR 75% REVIEW
	DATE	BY	ISSUES / REVISIONS

PROJECT: **Kawartha Lakes Jump In CAMPUS BLOCK SITE BEAUTIFICATION**

DRAWING: **DETAILS**

DRAWN BY: T. VALDOCK	CHECKED BY: P. BROCKS	PROJECT C14-0659
DESIGNED BY: T. VALDOCK	APPROVED BY: L. CULLEN	DRAWING No.
SCALE: AS NOTED	DATE: JULY 2024	<b>L06</b>

DATE: 07/07/2018 FILE: Z:\C:\Users\CA\Projects\CT-0659-2018-001 Site Design & CA (Kawartha Lakes) \3100-DESIGN\3100-001-0009\_LANDSCAPE\_PLAN.dwg

## GENERAL NOTES

1. CONTRACTOR SHALL VISIT THE SITE TO FAMILIARIZE THEMSELVES WITH THE SITE CONDITIONS. BIDDERS ARE TO COMPLETE THEIR OWN ASSESSMENT OF SITE CONDITIONS AND GRADING REQUIREMENTS.
2. CONTRACTOR SHALL CHECK AND VERIFY ALL DIMENSIONS, QUANTITIES AND SITE CONDITIONS BEFORE PROCEEDING WITH THE WORK, AND REPORT ANY DISCREPANCIES TO THE CONTRACT ADMINISTRATOR BEFORE PROCEEDING. NO ALLOWANCE SHALL BE MADE ON BEHALF OF THE CONTRACTOR FOR FAILURE TO DO SO.
3. CONTRACTOR SHALL NOTIFY THE CONTRACT ADMINISTRATOR MINIMUM 48 HOURS PRIOR TO COMMENCEMENT OF WORK TO COORDINATE INSPECTION SCHEDULES.
4. CONTRACTOR TO CONFIRM LAYOUT OF ALL LANDSCAPE FEATURES AND PLANTINGS WITH CONTRACT ADMINISTRATOR BEFORE PROCEEDING.
5. CONTRACTOR SHALL BE RESPONSIBLE FOR REPAIR OF ANY DAMAGE TO EXISTING STREETS, SIDEWALKS, STRUCTURES, AND OTHER FEATURES TO REMAIN DURING CONSTRUCTION OF THIS PROJECT AND SHALL REPAIR SUCH DAMAGE TO THE SATISFACTION OF THE OWNER AND THE CONTRACT ADMINISTRATOR AT NO ADDITIONAL COST.
6. THE CONTRACTOR, UPON ACCEPTANCE OF THE CONTRACT, ASSUMES COMPLETE RESPONSIBILITY AND LIABILITY FOR THE JOB SITE DURING THE COURSE OF CONSTRUCTION, AND SHALL ENSURE PUBLIC SAFETY AND CLEANLINESS OF THE PROJECT SITE AND MUNICIPAL PROPERTY NEAR THE SITE.
7. THE CONTRACTOR IS RESPONSIBLE FOR LOCATION AND PROTECTION OF ALL EXISTING UNDERGROUND AND OVERHEAD UTILITIES. THE CONSULTANT ASSUMES NO RESPONSIBILITY FOR THE ACCURACY OF THE LOCATION OF EXISTING UTILITIES AS INDICATED ON THE DRAWINGS.
8. CONSTRUCTION MUST CONFORM TO ALL APPLICABLE CODES AND REGULATIONS OF ALL AUTHORITIES HAVING JURISDICTION.
9. LANDSCAPE DRAWINGS SHALL BE READ IN CONJUNCTION WITH ALL OTHER CONTRACT DRAWINGS, DETAILS, SPECIFICATIONS, AND CORRESPONDENCE ISSUED DURING THE CONTRACT.

## TOPSOIL

1. TOPSOIL ANALYSIS FOR IMPORTED OR STOCKPILED TOPSOIL SHALL BE COMPLETED AND TOPSOIL SHALL BE AMENDED AS RECOMMENDED IN SOIL ANALYSIS REPORT.
2. TOPSOIL SHALL BE SCREENED AND PLACED TO A MINIMUM DEPTH OF 150mm IN ALL DISTURBED AREAS.
3. PREPARE PLANTING BEDS PRIOR TO ARRIVAL OF PLANT MATERIAL ON SITE.
4. ALL PLANTING BEDS SHALL BE MIN. 500mm DEPTH. BOTTOM AND EDGES OF PLANTING BEDS AND PITS SHALL BE SCARIFIED.

## PLANTING

1. NO SUBSTITUTIONS SHALL BE MADE TO PLANT SPECIES, VARIETY OR SIZE WITHOUT APPROVAL FROM LANDSCAPE ARCHITECT.
2. IN THE EVENT OF A DISCREPANCY BETWEEN PLANT LIST AND PLAN, QUANTITIES SHOWN ON PLAN SHALL TAKE PRECEDENCE OVER THE PLANT LIST.
3. REPORT ANY DISCREPANCIES BETWEEN THE PLAN AND THE LIST IMMEDIATELY TO THE LANDSCAPE ARCHITECT.
4. ALL PLANT MATERIAL SHALL BE PROVIDED IN ACCORDANCE WITH CURRENT SPECIFICATIONS ESTABLISHED BY THE CANADIAN NURSERY LANDSCAPE ASSOCIATION'S CANADIAN STANDARDS FOR NURSERY STOCK.
5. PLANTS SHALL CONFORM TO INTERNATIONAL CODE OF NOMENCLATURE FOR CULTIVATED PLANTS FOR NOMENCLATURE OF PLANTS AND WITH RECOGNIZED SCIENTIFIC NAME GIVEN IN LATEST EDITION OF STANDARDIZED PLANT NAMES. NAMES OF VARIETIES NOT NAMED THEREIN ARE TO BE IN GENERAL CONFORMITY WITH NAMES ACCEPTED IN NURSERY TRADE.
6. PROVIDE ALL PLANT MATERIAL IN ACCORDANCE WITH SPECIFICATIONS ESTABLISHED BY THE CANADIAN NURSERY LANDSCAPE ASSOCIATION'S CANADIAN STANDARDS FOR NURSERY STOCK.
7. THE CONTRACTOR SHALL STAKE PLANTING LOCATIONS AND CONFIRM LAYOUT OF ALL TREE PLANTINGS BEFORE PROCEEDING.
8. WATER TEST EXCAVATED TREE PITS FOR POROSITY PRIOR TO PLANTING AND REPORT TO LANDSCAPE ARCHITECT IF DRAINAGE IS NOT ADEQUATE.
4. PLANTS SHALL BE FRESHLY DUG AND IN HEALTHY, VIGOROUS CONDITION AT ARRIVAL ON SITE. HEELED-IN PLANTS OR PLANTS FROM COLD STORAGE WILL NOT BE ACCEPTED. WHENEVER PRACTICAL, SUPPLY PLANTS FROM NURSERIES LOCATED WITHIN SAME HARDINESS ZONE AND SIMILAR SOIL CONDITIONS TO THE SITE.
5. IN ALL PLANTING OPERATIONS, BACKFILL WITH SOIL MIXTURE IN 150 MM LAYERS AND FIRMLY TAMP EACH LAYER TO ENSURE PLANT RETAINS ITS ORIENTATION. ENSURE NO AIR POCKETS REMAIN AROUND ROOTS. WATER THOROUGHLY.
6. PLANTING BEDS SHALL BE CONTINUOUS AROUND SHRUBS AND PERENNIALS WITH MULCH PLACED THROUGHOUT THE BED.
7. SPACING TO BE AS SHOWN ON PLAN OR EQUALLY SPACED WITHIN AREA SHOWN ON PLAN.
8. PLANTS SHALL BE FRESHLY DUG AND IN HEALTHY, VIGOROUS CONDITION AT ARRIVAL ON SITE. HEELED-IN PLANTS OR PLANTS FROM COLD STORAGE WILL NOT BE ACCEPTED. WHENEVER PRACTICAL, SUPPLY PLANTS FROM NURSERIES LOCATED WITHIN SAME HARDINESS ZONE AND SIMILAR SOIL CONDITIONS TO THE SITE.
9. ALL DISTURBED AREAS SHALL BE REINSTATED WITH MINIMUM 150 mm IMPORTED SCREENED TOPSOIL AND SOD.

## SODDING

1. PRIOR TO SOD PLACEMENT, TOPSOIL SHALL BE FINE GRADED TO ENSURE THE SURFACE IS FREE OF HUMPS AND HOLLOWES WITH SMOOTH, EVEN GRADE, TO TOLERANCE OF +/- 15mm.
2. SOD SHALL CONFORM TO THE SPECIFICATIONS OF LANDSCAPE ONTARIO AND THE NURSERY SOD GROWERS' ASSOCIATION OF ONTARIO.
3. SOD SHALL BE NUMBER ONE TURFGRASS NURSERY SOD.
4. LAY SOD IN ROWS, PERPENDICULAR TO DIRECTION OF SLOPE, WITH JOINTS STAGGERED. BUTT SECTIONS CLOSELY WITHOUT OVERLAPPING OR LEAVING GAPS BETWEEN SECTIONS. CUT OUT IRREGULAR, DISCOLOURED OR THIN SECTIONS WITH SHARP IMPLEMENTS.
5. ROLL SOD AFTER INSTALLATION, TO THE SATISFACTION OF THE LANDSCAPE ARCHITECT. PROVIDE CLOSE CONTACT BETWEEN SOD AND SOIL BY LIGHT ROLLING. USE OF HEAVY ROLLER TO CORRECT IRREGULARITIES IN GRADE IS NOT PERMITTED.

## WARRANTY

1. AT THE COMPLETION OF PLANTING OPERATIONS, REMOVE ALL SURPLUS MATERIAL FROM THE SITE AT NO EXTRA CHARGE TO THE PROJECT.
2. MAKE GOOD ALL DAMAGE RESULTING FROM PLANTING OPERATIONS AT NO EXTRA CHARGE TO THE PROJECT.
3. DURING THE WARRANTY PERIOD, ALL PLANT MATERIAL THAT IS DEAD OR NOT IN AN ACCEPTABLE GROWING CONDITION OR WHICH DOES NOT MEET THE REQUIREMENTS OF THE SPECIFICATIONS SHALL BE REPLACED, AT NO EXTRA COST TO THE CONTRACT.
4. ALL T-BARS SHALL BE REMOVED AT THE CONCLUSION OF THE WARRANTY PERIOD.

## TREE PROTECTION NOTES

THE CRITICAL ROOT ZONE (CRZ) OF TREES IS ESTABLISHED AS BEING 10 CENTIMETRES FROM THE TRUNK OF A TREE FOR EVERY CENTIMETRE OF TRUNK DIAMETER. THE TRUNK DIAMETER IS MEASURED AT A HEIGHT OF 1.3 METRES FOR TREES OF 15 CENTIMETRES DIAMETER AND GREATER AND AT A HEIGHT OF 0.3 METRES FOR TREES OF LESS THAN 15 CENTIMETRES DIAMETER.

1. THE CONTRACTOR MUST TAKE CARE TO ENSURE THAT NO DAMAGE OCCURS TO THE TRUNK, BRANCHES, OR ROOT SYSTEM OF ANY TREE TO REMAIN. ALL EXISTING TREES WHICH ARE TO REMAIN MUST BE PROTECTED BY THE CONTRACTOR BY AVOIDING ANY CONTACT WITH TRUNK AND BRANCHES, AND BY AVOIDING ANY ENCROACHMENT INTO CRITICAL ROOT ZONES.
2. THE CONTRACTOR MUST NOT STORE ANY EQUIPMENT OR MATERIALS ON LAWN AREAS SURROUNDING TREES, PARTICULARLY WITHIN CRITICAL ROOT ZONES.
3. NO MACHINERY OPERATION OR GRADE CHANGES ARE PERMITTED WITHIN THE CRZ OF ANY TREE TO REMAIN.
4. NO SIGNS OR NOTICES SHALL BE ATTACHED TO ANY TREE TO REMAIN.
5. EXHAUST FUMES FROM EQUIPMENT MUST NOT BE DIRECTED TOWARDS ANY TREE'S CANOPY.
6. THE CONTRACTOR SHALL SUBMIT TREE PROTECTION LAYOUT FOR APPROVAL WITH STAGING PLANS FOR EACH SECTION OF WORK. FOLLOWING APPROVED PLANS AND AS DIRECTED BY THE CONTRACT ADMINISTRATOR, THE CONTRACTOR SHALL ERRECT A 1.2 m HIGH FENCE AROUND THE OUTER EDGE OF THE CRITICAL ROOT ZONE (CRZ) OF TREES AS PER TREE PROTECTION SPECIFICATION DETAIL ON DRAWING L100. FENCE SHALL BE MAINTAINED UNTIL THE WORK IN EACH SECTION IS COMPLETE. IT IS EXPECTED THAT APPROXIMATELY 80% OF THE LENGTH OF WORK AREA WILL REQUIRE TREE PROTECTION FENCING, AND THAT TREE PROTECTION FENCE WILL BE INSTALLED AND MOVED FROM ONE SECTION TO THE NEXT AS CONSTRUCTION PROGRESSES.
7. WHERE PRUNING REQUIREMENTS ARE INDICATED ON THE DRAWINGS, BRANCHES TO BE PRUNED MUST BE APPROVED BY THE CONTRACT ADMINISTRATOR, AND MUST BE REMOVED IN ACCORDANCE WITH ACCEPTED ARBORICULTURE PRACTICES BY AN ISA CERTIFIED ARBORIST.
8. ROOTS OF EXISTING TREES EXPOSED BY EXCAVATION SHALL BE CLEANLY PRUNED USING ARBORICULTURE BEST PRACTICES AS DIRECTED BY THE CONTRACT ADMINISTRATOR.
9. GRINDING OF STUMPS AND SURFACE ROOTS SHALL BE COMPLETED FOR TREES THAT ARE DESIGNATED FOR REMOVAL. TO A DEPTH OF 300mm OR AS DIRECTED BY THE CONTRACT ADMINISTRATOR. STUMP GRINDING AND REINSTATEMENT TO FINISH GRADE WITH TOPSOIL AND SOD SHALL TAKE PLACE. IF STUMP GRINDING MAY CAUSE ADVERSE AFFECT TO TREES TO REMAIN, TRUNKS MUST BE CUT FLUSH TO EXISTING GRADE. STUMP GRINDING / CUTTING AND REINSTATEMENT OF FINISHED GRADE SHALL BE COMPLETED TO THE SATISFACTION OF THE CONTRACT ADMINISTRATOR.
10. ALL DISTURBED AREAS SHALL BE REINSTATED WITH TOPSOIL TO FILL EXCAVATED AREAS UP TO SURROUNDING FINISHED GRADE. SOD SHALL BE PLACED FOLLOWING CONTRACT ADMINISTRATOR'S APPROVAL OF FINISHED GRADE.

## TREE PRUNING NOTES

1. PRIOR TO COMMENCEMENT OF WORK, THE CONTRACTOR SHALL REVIEW THE SITE AND CONFIRM THE SCOPE OF WORK TO BE COMPLETED.
2. TREE BRANCHES MUST BE PRUNED TO PROVIDE THE MINIMAL CLEARANCE REQUIRED TO COMPLETE CONSTRUCTION.
3. ALL PRUNING WORKS SHALL BE REVIEWED AND APPROVED BY THE CLIENT PRIOR TO COMMENCING THE WORK. PRUNING SHALL BE COMPLETED USING BEST PRACTICES UNDER THE SUPERVISION OF AN ISA CERTIFIED ARBORIST.
4. ALL PRUNED MATERIAL SHALL BE REMOVED FROM THE SITE.



IT IS THE RESPONSIBILITY OF THE CONTRACTOR TO INFORM THEMSELVES OF EXISTING CONDITION, AND THE EXACT LOCATION OF, AND ASSUME ALL LIABILITY FOR DAMAGE TO ALL UTILITIES SERVICES AND STRUCTURES WHETHER ABOVE GROUND OR BELOW GRADE BEFORE COMMENCING THE WORK. SUCH INFORMATION IS NOT NECESSARILY SHOWN ON THE DRAWING, AND WHERE SHOWN, THE ACCURACY CANNOT BE GUARANTEED.

WITH THE SOLE EXCEPTION OF THE BENCHMARK(S) SPECIFICALLY DESCRIBED FOR THIS PROJECT, NO ELEVATION INDICATED OR ASSUMED HEREON IS TO BE USED AS A REFERENCE ELEVATION FOR ANY PURPOSE.

ALL DIMENSIONS AND INFORMATION SHALL BE CHECKED AND VERIFIED ON THE JOB AND ANY DISCREPANCIES MUST BE REPORTED TO THE MUNICIPALITY BEFORE COMMENCING THE WORK. DRAWINGS ARE NOT TO BE SCALED.

PROJECT:		ISSUED FOR 75% REVIEW	
1	2025-01-17	PB	
	DATE	BY	ISSUES / REVISIONS

PROJECT:

**CAMPUS BLOCK**  
SITE BEAUTIFICATION

DRAWING:

**GENERAL NOTES**

DRAWN BY:	CHECKED BY:	PROJECT
T. VALDOCK	P. BROCKS	C14-0659
DESIGNED BY:	APPROVED BY:	DRAWING No.
T. VALDOCK	L. CULLEN	
SCALE:	DATE:	
	JULY 2024	<b>L07</b>

DATE: 07/04/2019 FILE: Z:\Users\CAT\MyPath\CT-0659-24a-0001-Site Design & CA (Kawartha Lakes)\310-212350\310-212350-014-0659\_LANDSCAPE\_PLAN.dwg