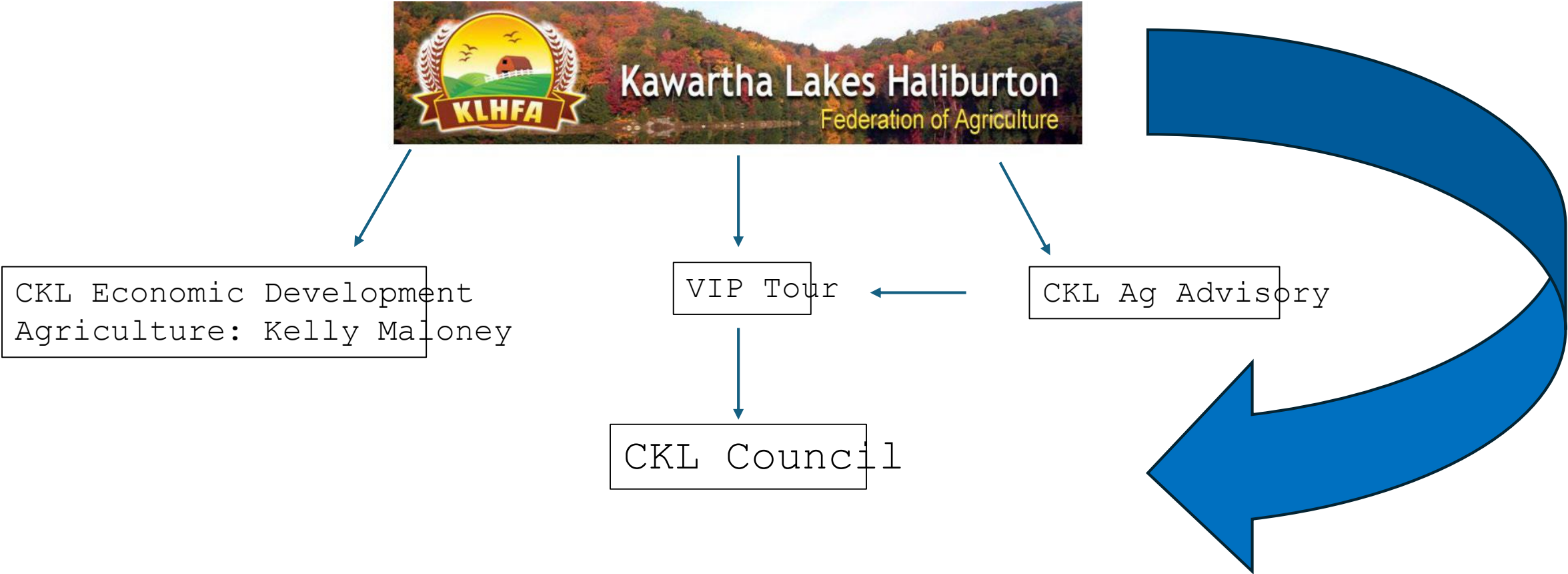


Kawartha Haliburton Federation of Agriculture

Engagement with City of Kawartha Lakes (CKL)



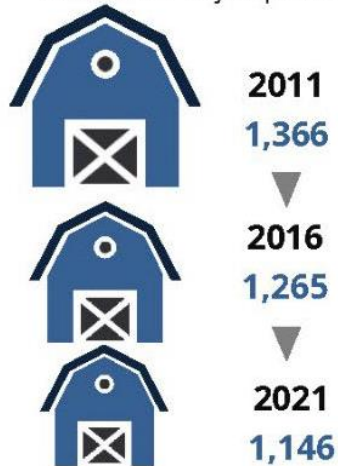
Agricultural Profile Update: Peterborough and City of Kawartha Lakes



Issue #1: Farmland Pressures

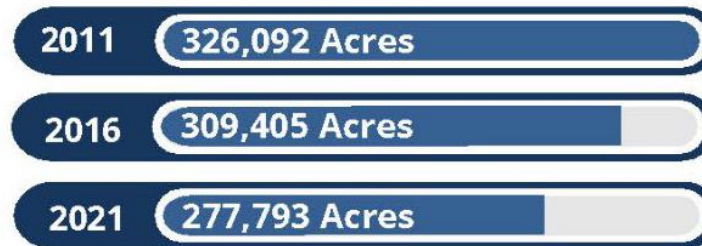
> NUMBER OF FARMS

Farms are disappearing.
There are 16.1% fewer
farms over a 10-year period.



> NUMBER OF FARMLAND ACRES

Kawartha Lakes has lost 48,299 Acres of farmland within 10 Years.



Number of Farms and Acres farmed decreasing

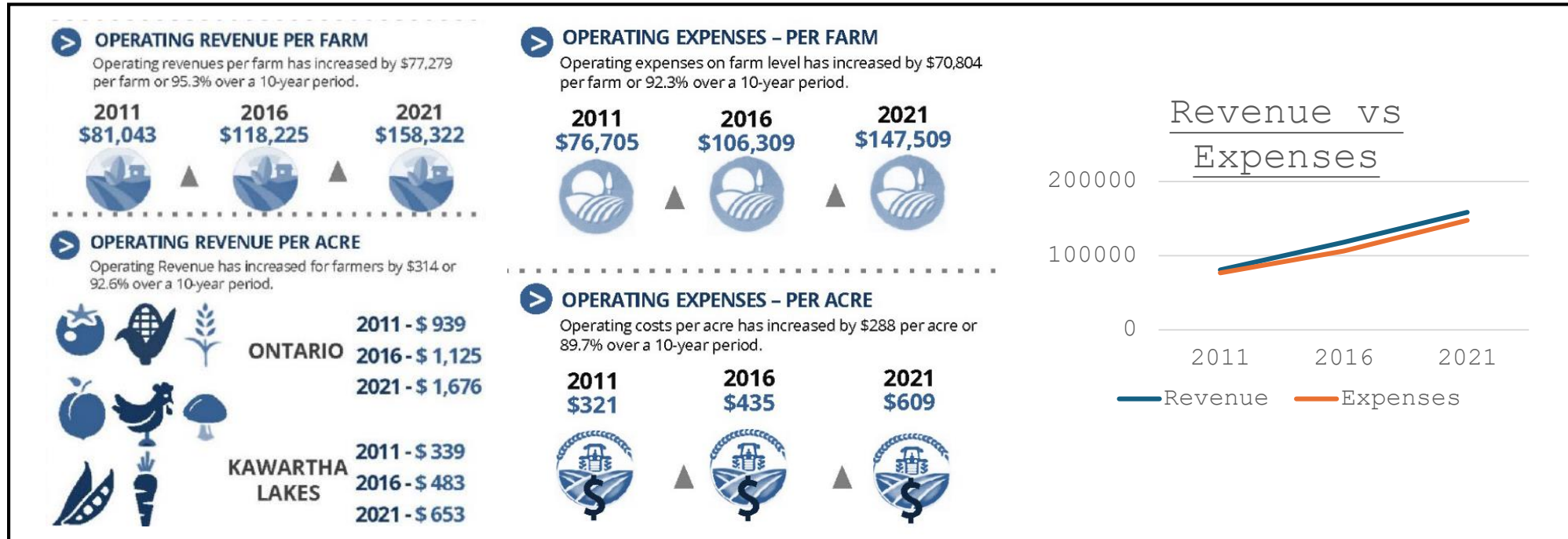
> AVERAGE FARM SIZE

Farms are remaining stable in
size in Kawartha Lakes.



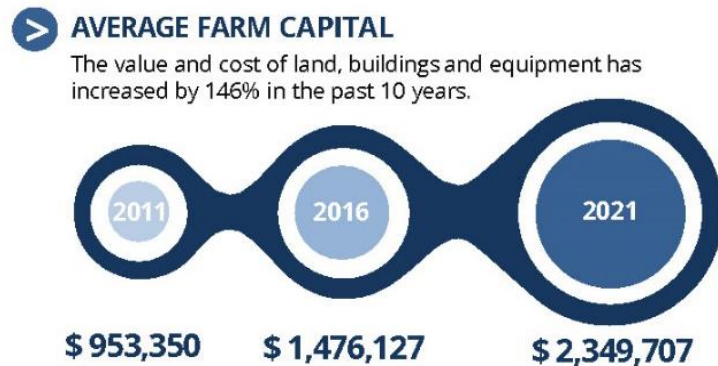
Farm size remaining stable

Issue #2: Ag Sector in CKL



Revenue vs Expenses

Year	Revenue	Expenses
2011	\$81,043	\$76,705
2016	\$118,225	\$106,309
2021	\$158,322	\$147,509



$$\begin{aligned} \times 3 &= \$544,311,009 \\ \times 2.2 &= \$399,161,407 \end{aligned}$$

2025 (25.5% incr)

$$\begin{aligned} &\$227,703,439 \\ \times 3 &= \$683,110,316 \\ \times 2.2 &= \$500,947,565 \end{aligned}$$

Looking at Livestock Operations



* **Miscellaneous Specialty refers to** : Sheep Farming, Goat Farming, Horse & Other Equine Production, Fur Bearing Animal & Rabbit Production, Apiculture, All Other Miscellaneous Animal Production, Mushroom Production, Other Food Crops Grown Under Cover, Floriculture Production, Nursery & Tree Production and Maple Syrup & Products Production

** **Other Combination refers to**: Fruit & Vegetable Combination Farming and All Other Miscellaneous Crop Farming

Ask: Council Engagement

VIP Tour

- To educate/communicate with councillors and CKL key staff
- Daytime local bus tour with farm related stops and lunch provided
- Co-event developed by Ag Advisory and Kawartha Haliburton Ag Federation
- Generally mid September
- Poor participation by council (1-2 members unless election year)

Ask: Please **CKL Economic Development Strategy 2025-2029** engage with Agriculture, the VIP tour would be a good place