

Encampment Response Update

Committee of the Whole

April 8, 2025



Overview

- Learnings
- Encampment response framework
- Encampment data
- Recent actions
- Protocol response
- Location restrictions
- 2025 priorities
- Long-term planning

Learnings

Tighter framework

Public education

Feedback from encampment stayers

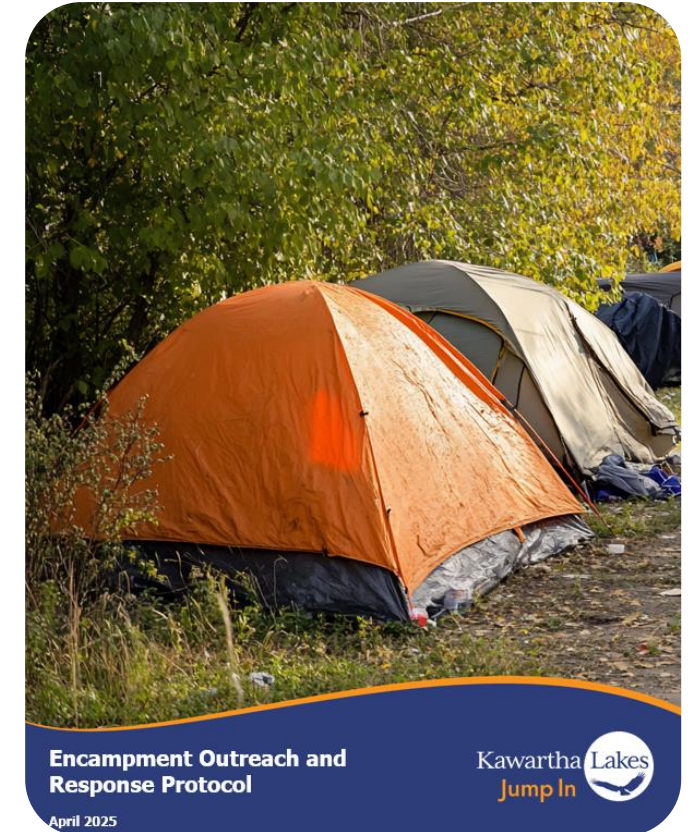
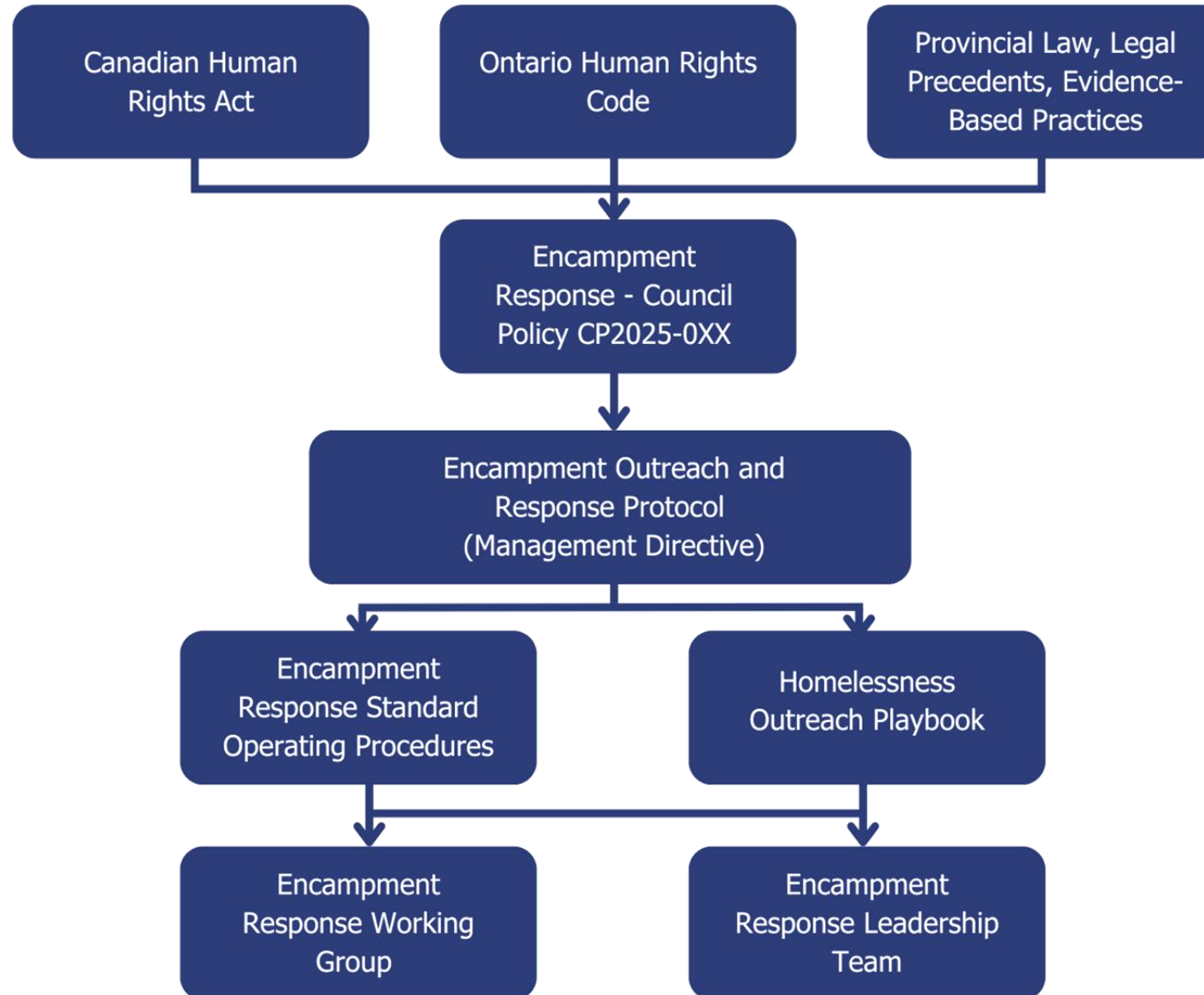
Feedback from public

Safety feedback from police

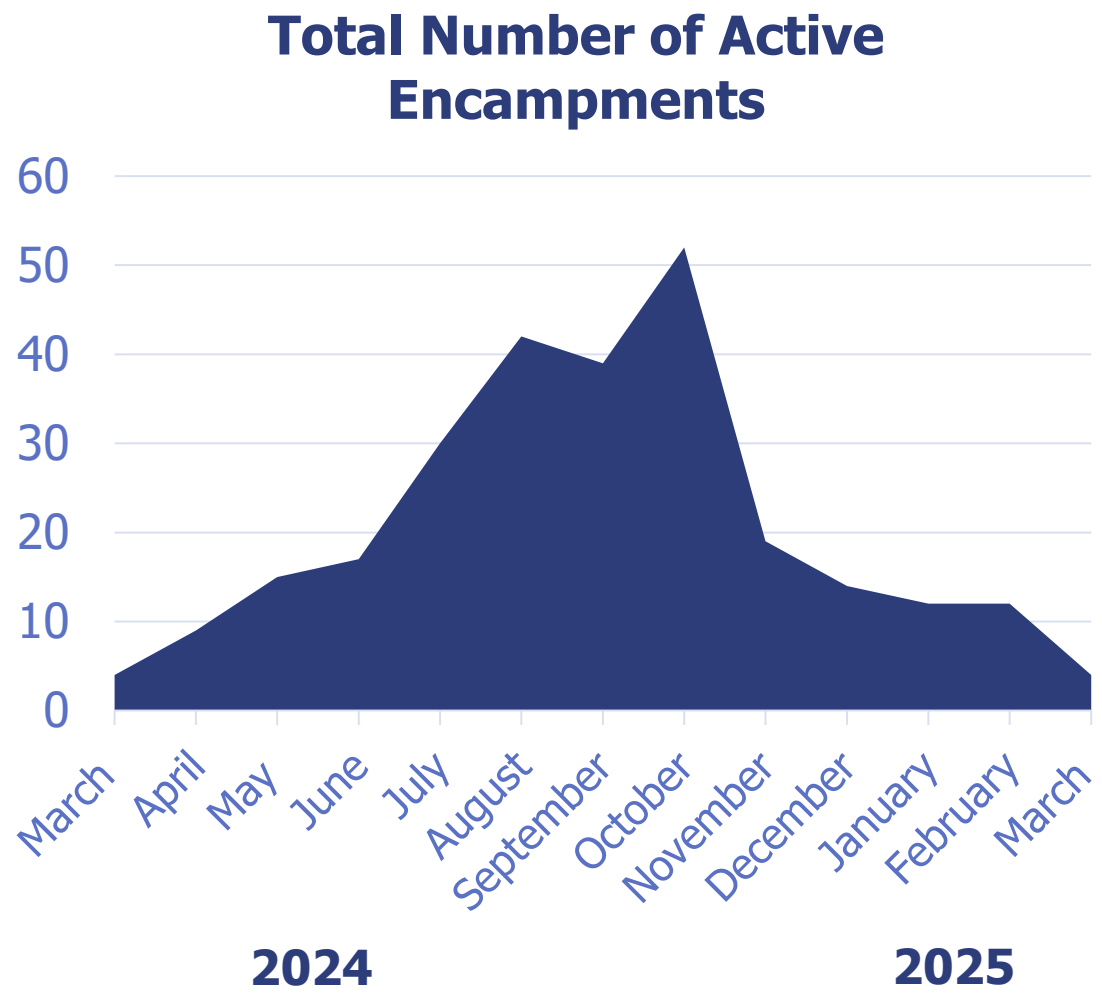
Guidance from City's insurer and solicitor



Encampment Response Framework



Encampment Data – 2024 to 2025



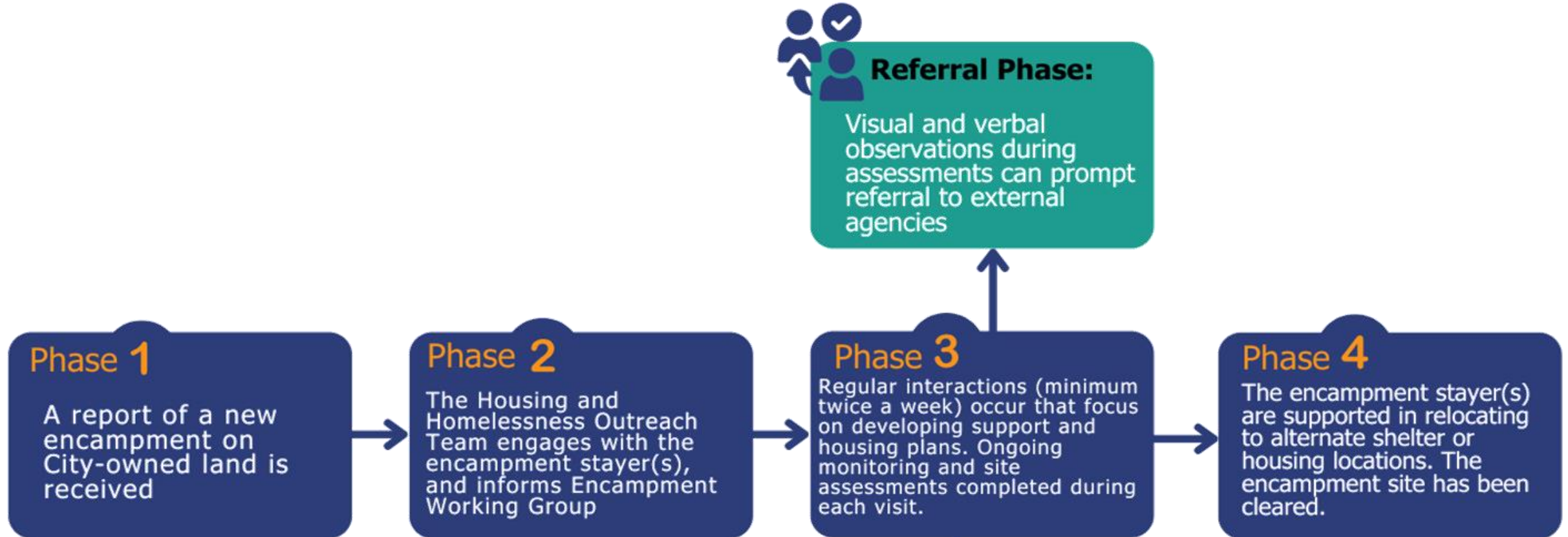
Date	Total Number Active Encampments	Total Number People In Encampments
March 2024	4	6
April 2024	9	13
May 2024	15	22
June 2024	17	24
July 2024	30	38
August 2024	42	60
September 2024	39	49
October 2024	52	69
November 2024	19	25
December 2024	14	20
January 2025	12	18
February 2025	12	18
March 2025	4	8

Recent Actions

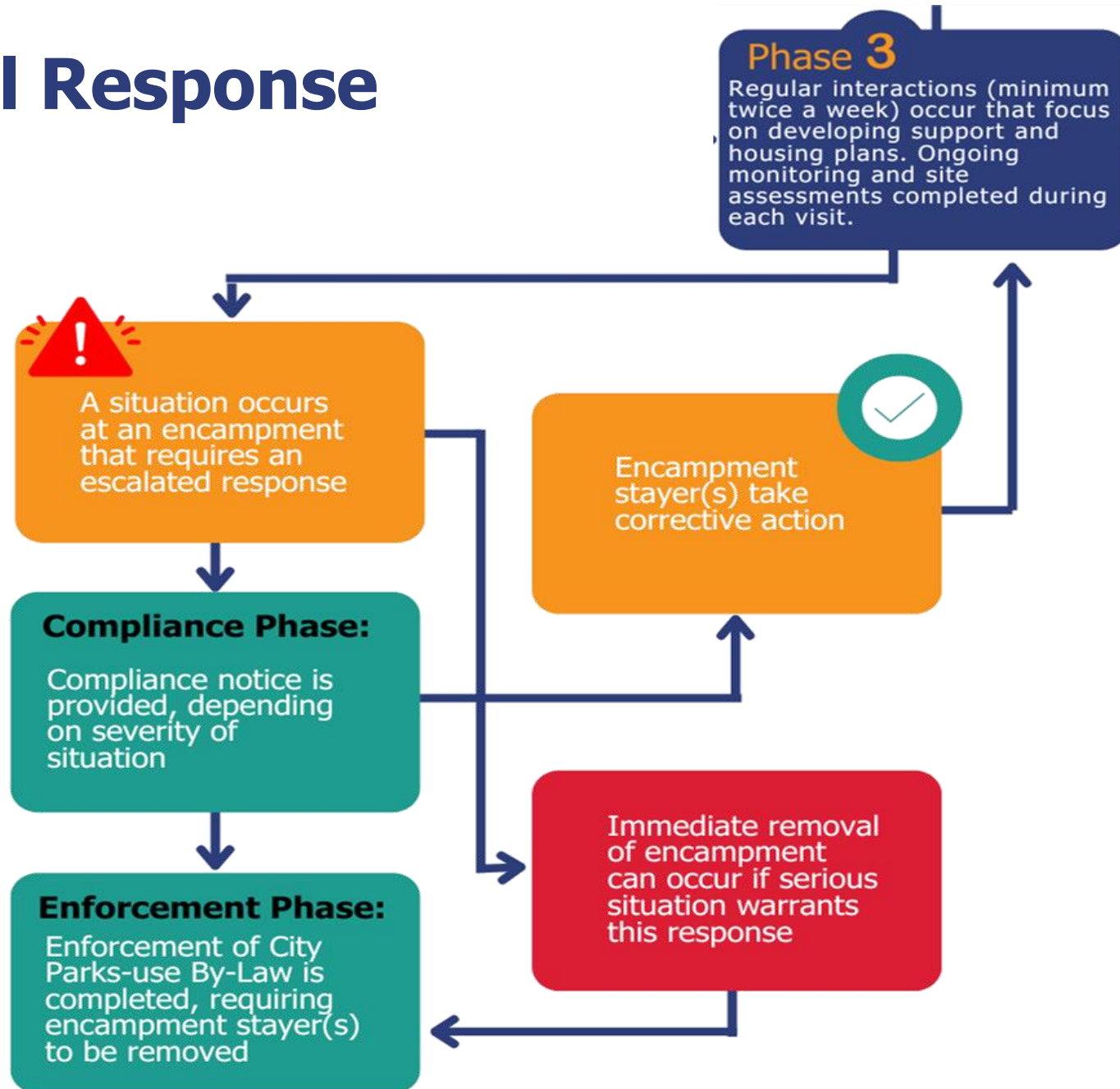
- Shelter capacity increase
- Drop-in services
- Out of the Cold - winter response program
- Temporary winter response
- New shelter service agreement allows for prioritized pathways for those in encampments to gain access to shelter

Date	Unique Individuals Served in Kawartha Lakes	Unique Individuals Served in Haliburton County
Dec 2024	14	8
Jan 2025	15	5
Feb 2025	6	
Mar 2025		1
Total	35	14

Protocol Response



Protocol Response



Location Restrictions

- **Prohibited Places for Encampments**
 - Near Hazardous Areas
 - Critical Infrastructure Locations
 - Recreation Areas
 - Active Transportation Routes
 - Areas with High Pedestrian Traffic or Public Events
 - Cultural Heritage or Protected Areas
 - Playgrounds and Schools
 - Areas with Extreme Weather Risks

Non-Prohibited (Acceptable) Places for Encampments

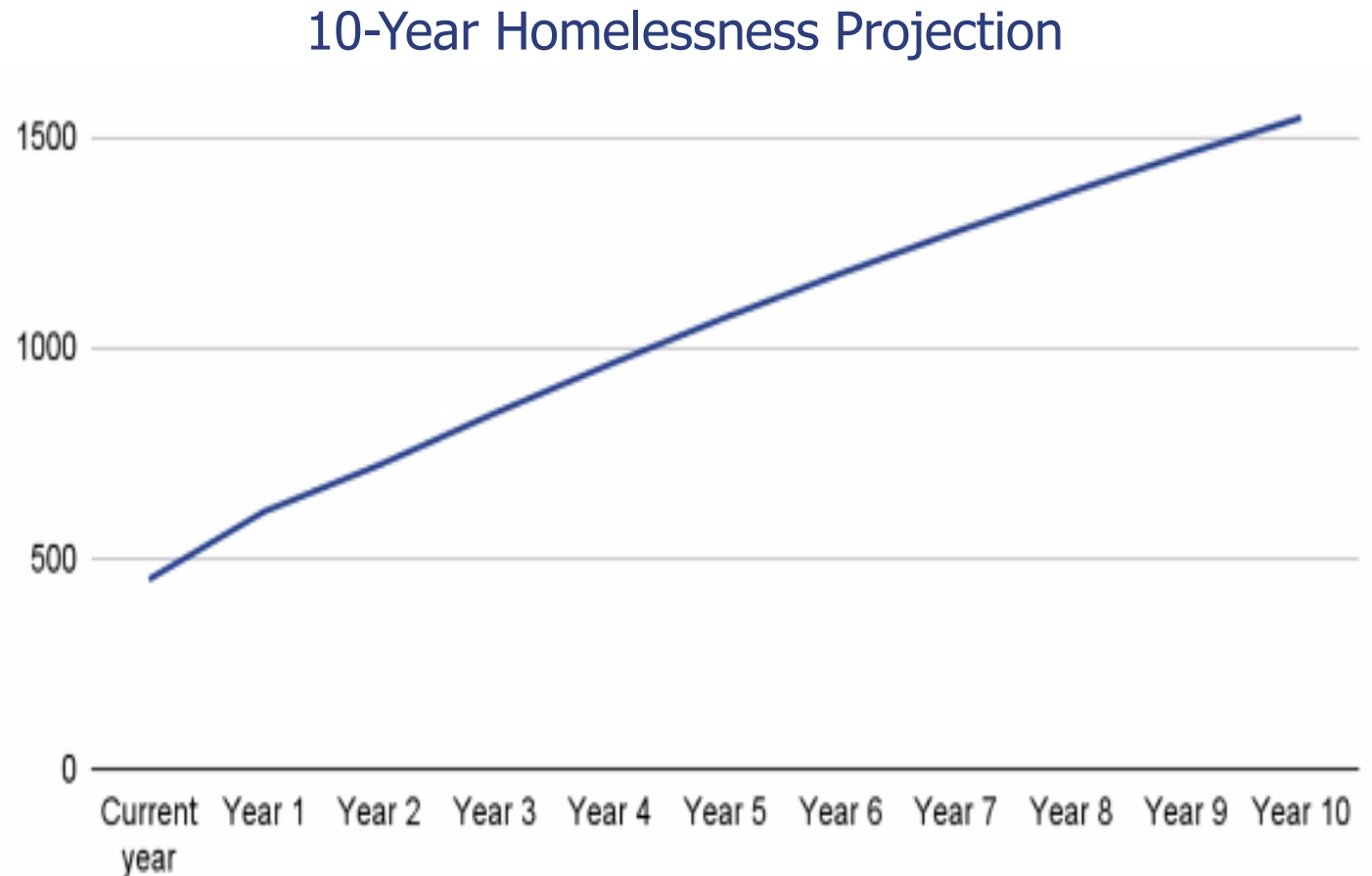
- Underused or Vacant Municipal Lands (includes parks with few scheduled activities)
- Areas Near to Social Services

2025 Priorities

- Encampment safety
- Implementation of completed protocol
- Customer service standards
- Explore opportunities to address basic needs
- Continue building trusting relationships
- Public education and anti-stigma campaigns

Long-Term Housing Solutions Planning

- Updated 10-Year Housing and Homelessness Plan and Needs Assessment
- Establish long-term investment plan
- Projected to bring forward these pieces in third quarter 2025



Homelessness is projected to grow from 450 people to 1,545 people in 10 years, if investments remain the same as today

Questions?

Ron Taylor

CAO

rtaylor@kawarthalakes.ca

705-324-9411 extension 1296

Cheryl Faber

Director, Human Services

cfaber@kawarthalakes.ca

705-324-9411 extension 3206

Michelle Corley

Human Services Manager, Housing

mcorley@kawarthalakes.ca

705-324-9411 extension 3102