

Lake Management Implementation Action Plan 2024

Carolyn Snider, Community Engagement Technician
June 3, 2025



2024 Success



Native Trees and Shrubs
Planted:
41,860



Shoreline Restored:
1,017.5ft



Funds Leveraged:
\$262,951



Native Species Planted:
4,645

Incentive Grant Program

Kawartha Water Fund



Implementation Outreach Program

PARTNER AND COMMUNITY ENGAGEMENT



Watershed Watch Newsletter

April 2024 / Vol 1

Lake Dalrymple Management Plan

Kawartha Conservation and the City of Kawartha Lakes have partnered on a 4 year science-based lake management planning project for Lake Dalrymple and its watershed. Once completed, this lake plan will help to keep this lake (the 9th largest in the municipality), healthy and resilient.

[Read More](#)

Water Fund Open

The Water Fund is an annual grant program that helps landowners and community groups access funding, knowledge, and technical support for environmental projects in the City of Kawartha Lakes and Durham Region. If your project has the potential to positively impact water quality or ecosystem health, apply now on our website.

[Apply Now](#)

Welcome to Kawartha Conservation's inaugural edition of the Watershed Watch Newsletter. We're thrilled to embark on this journey with you, as we introduce our newsletter dedicated to bringing you the latest updates on projects, services, programs, and grant opportunities that directly impact you. At Kawartha Conservation, we understand the importance of staying connected, and our newsletter aims to provide you with a quick and insightful glance at what's happening in our organization. How often can you expect to hear from us? Watershed Watch will be delivered monthly, ensuring you're always in the loop about the initiatives that matter most.

We encourage you to make the most of this inaugural edition and explore the projects, services, programs, and grant opportunities we've curated just for you. If there are specific topics you'd like to see more of in the future, we invite you to share your thoughts with us by sending an email to csnider@kawarthaconservation.com. Feel free to spread the word! Share this newsletter with your family, friends, and neighbors to keep everyone informed and engaged. Together, we can foster a stronger, more connected community. Subscribe now at www.kawarthaconservation.com/subscribe to ensure you never miss an edition.

- Carolyn Slater, Administrative Support
Conservation Programs

Urban rain garden planting completed through the Water Fund.

Water Quality Specialist, Cassen taking monitoring water sampling on Lake Dalrymple



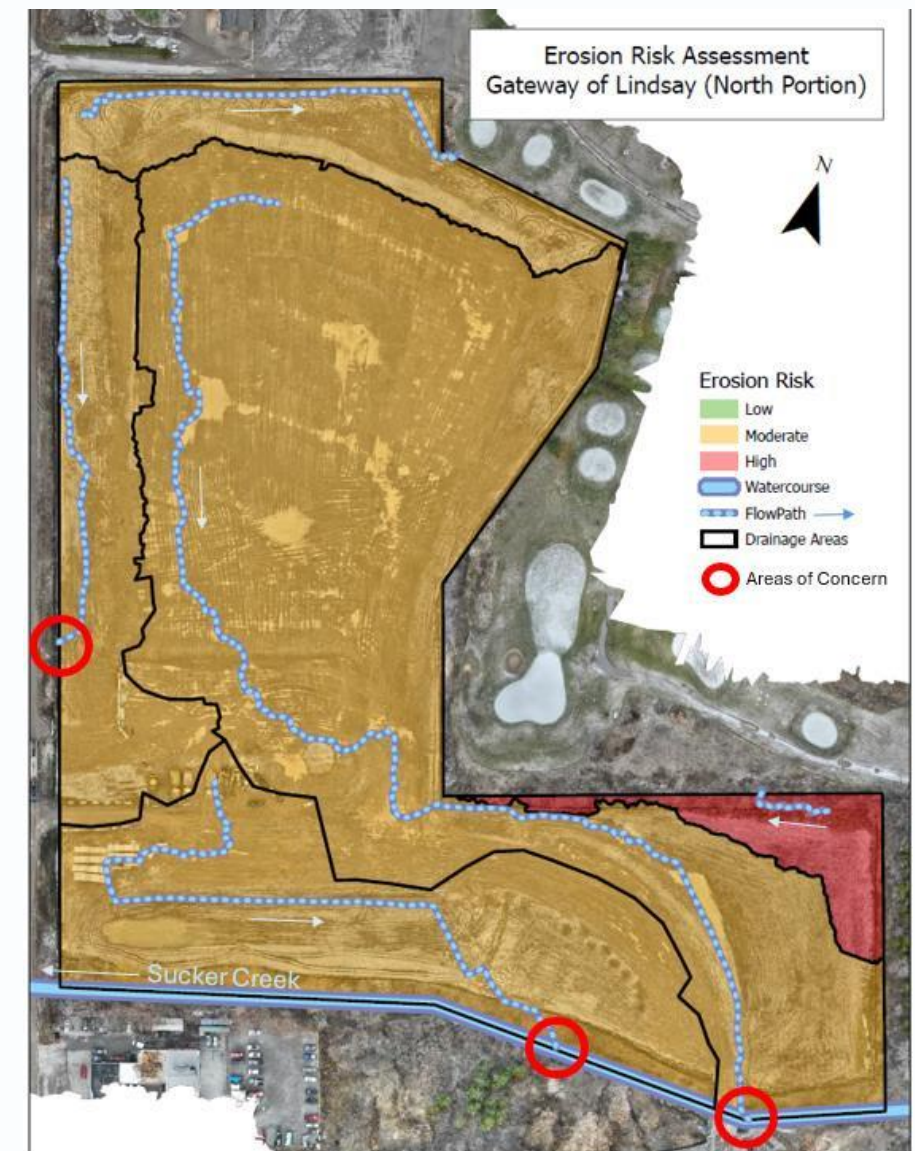


Implementation Outreach Program

Sediment and Erosion Control



Detailed topographic map, from processed drone elevations



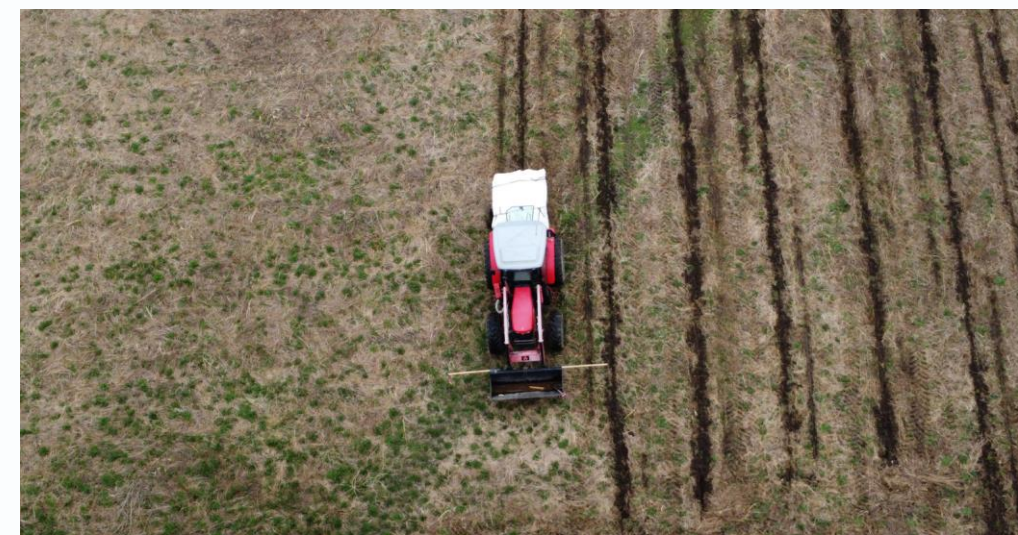
Rural Program

AGRICULTURAL STEWARDSHIP



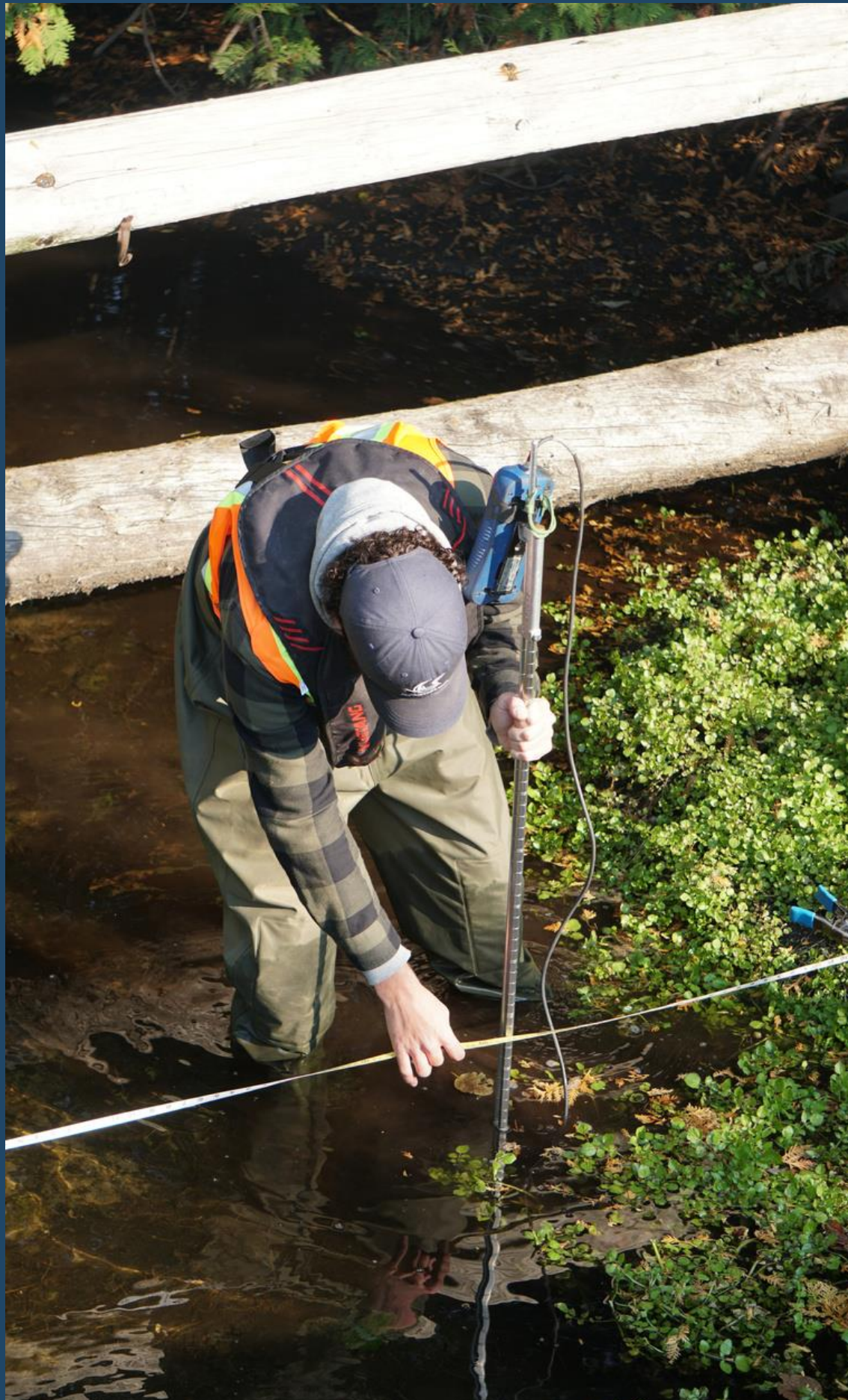
Rural Program

FORESTRY AND TREE PLANTING STEWARDSHIP



Rural Program

Investigate Upstream Monitoring



Waterbody	Site	Score	Category	pH	Turbidity	Dissolved Oxygen	Chloride	Nitrate	Phosphorus
Janetville Creek	1	58.8	MARGINAL	20.8	22.7	17.6	0	0	66.7
	2	54.7	MARGINAL	6.1	16.1	16	0	0	39.1
	3	58.7	MARGINAL	4.3	0	66.7	0	0	47.1
Sucker Creek	1	39.5	POOR	10.8	32.4	38.5	4.7	7.9	34.9
	2	49.1	MARGINAL	19.4	25	23.1	2.7	0	45.9
	3	38.3	POOR	16.2	58.8	48.3	5.3	9.1	47.2
Stoney Creek	1	62.4	MARGINAL	8.1	0	89.3	0	0	42.9
	2	59	MARGINAL	6.2	32.3	40.9	0	0	46.2
	3	60.3	MARGINAL	0	19	25	0	0	52.6
	4	64.1	MARGINAL	0	9.1	16.7	0	0	38.9
	5	66.9	FAIR	0	25	36.4	0	0	50
	6	45.9	MARGINAL	3.2	24.2	54.5	0	3.1	58.6

Shoreline Program

Waterfront Stewardship



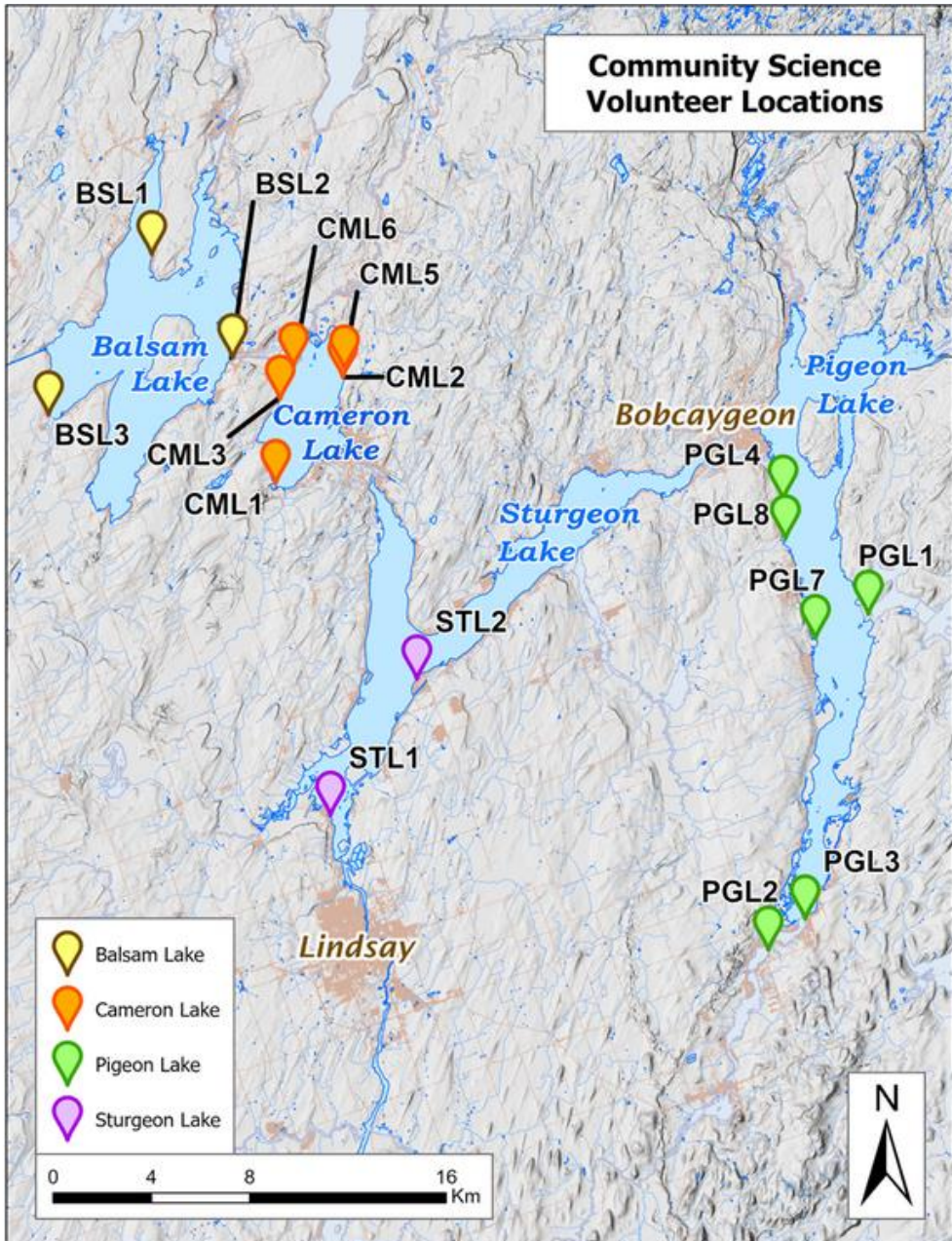


Shoreline Program

Community Science Monitoring



	Balsam Lake	Cameron Lake	Sturgeon Lake	Pigeon Lake
Average Phosphorus (mg/L)	0.012	0.011	<u>0.044</u>	0.017
Average Nitrate (mg/L)	0.058	0.052	<u>0.175</u>	0.05
Average Chloride (mg/L)	7.97	9.22	<u>42.55</u>	15.73
Average E. coli (cf units/100ml)	2.54	8.35	<u>26.5</u>	5.95
Average Water Temperature (°C)	<u>21.9</u>	21.2	21	21.5
Average Conductivity (µS/cm)	160	150	<u>600</u>	400



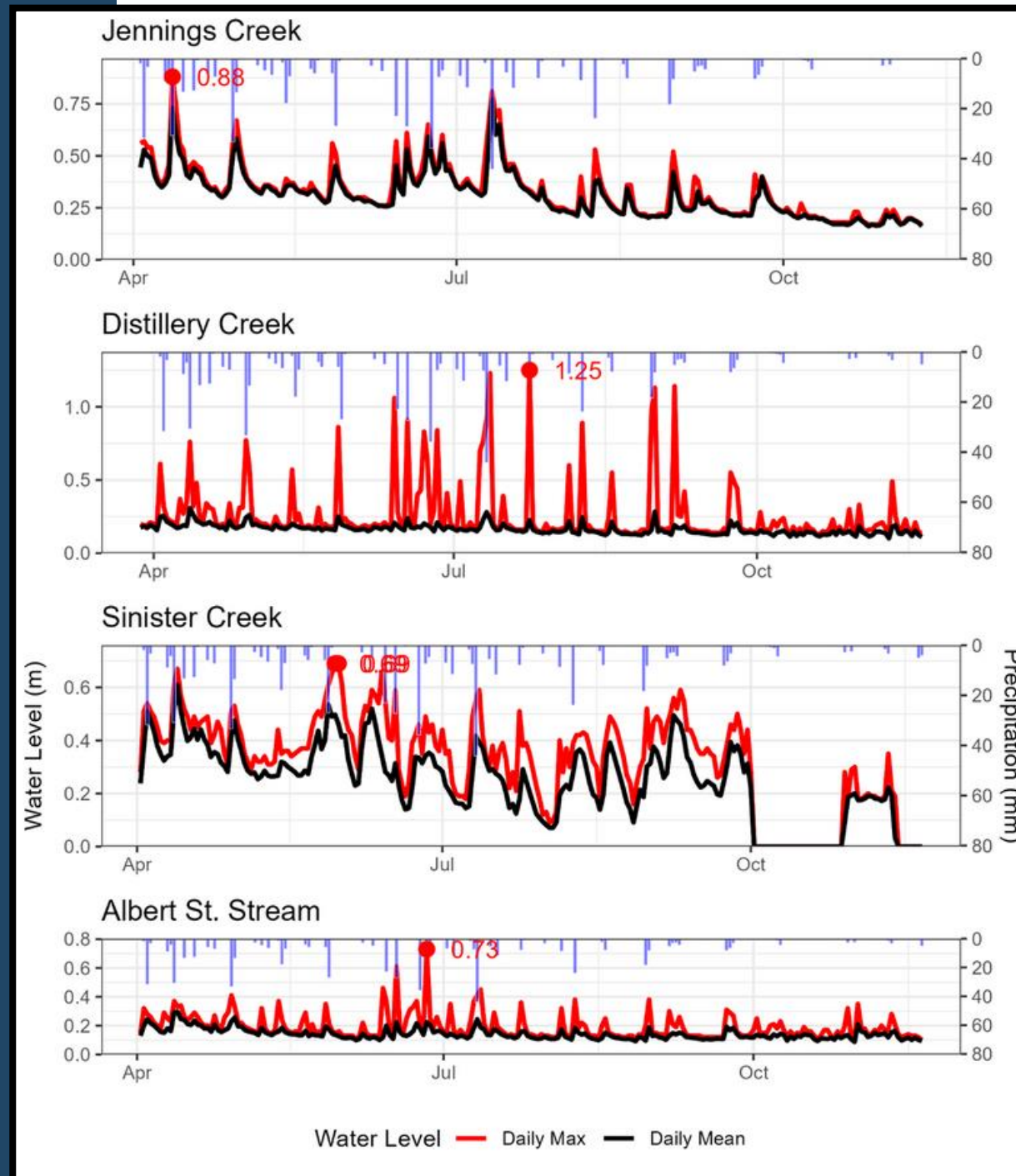
Shoreline Program

Bobcaygeon Aquatic Dam Habitat Assessment



Urban Program

Stormwater Monitoring



Urban Program

Stormwater Monitoring



Site	WQI Score	WQI Category	Storm samples
Jennings	52.4	MARGINAL	32.4 Poor
Distillery	48.9	MARGINAL	
Sinister	53.1	MARGINAL	31 Poor
Albert St.	60	MARGINAL	
Scugog River 1	90.1	GOOD	
Scugog River 2	90.8	GOOD	
Scugog River 3	82	GOOD	
Scugog River 4	86.5	GOOD	
Sinister 2	50.5	MARGINAL	
Sinister 3	56.7	MARGINAL	
Sinister 4	62.5	MARGINAL	
Sinister 5	58.5	MARGINAL	
Sinister 6	61.8	MARGINAL	

Urban Program

Urban Restoration



A sunset scene over a body of water, with reeds in the foreground. A white banner is overlaid across the middle of the image, containing the text "Questions?".

Questions?