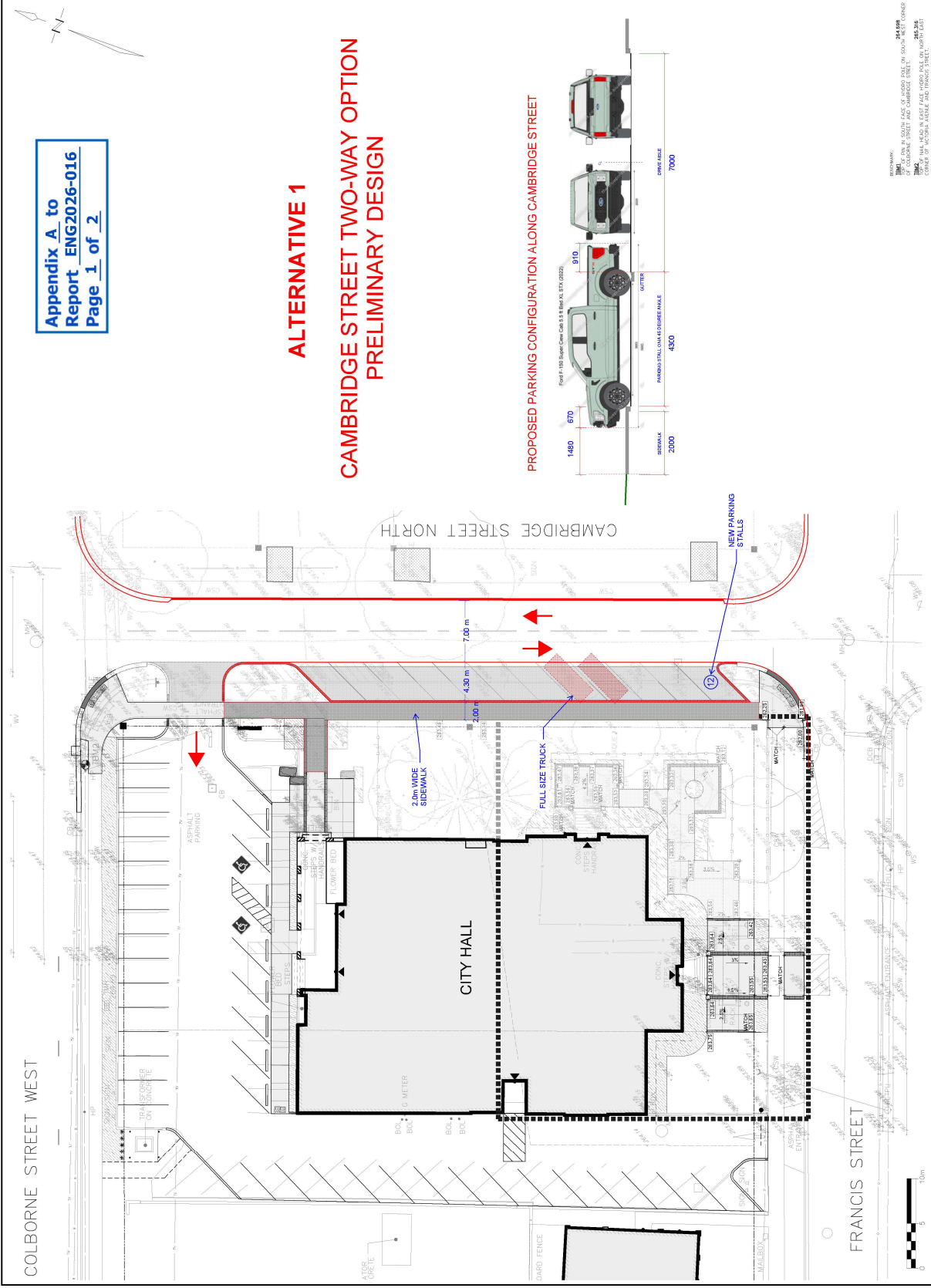


ALTERNATIVE 1

CAMBRIDGE STREET TWO-WAY OPTION

PRELIMINARY DESIGN

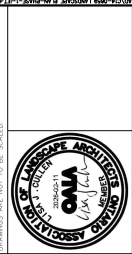


LEGEND

- EXISTING GRADE
- PROMISED GRADE
- EXISTING TREE TO REMAIN
- DECIDUOUS TREE
- MAINTENANCE BIOLOGICAL TREE
- GRUB
- GROUP CURB
- PAINTING AREA
- ASPHALT
- CONCRETE PAVING
- DETECTABLE WARNING PLATES
- N.C.
- FLAPPILE FOOTING-N.C.
- UNIT PAVING ASBEST PAVING
- ELECTRICAL OUTLET ON PEDESTAL
- PERMANENT PAVING
- HANDSTONE-N.C.
- CLP CONCRETE BURN WALL
- PHASE 1 LIMITS

CIM+

IT IS THE RESPONSIBILITY OF THE CONTRACTOR TO INFORM THE CLIENT OF THE LOCATION AND EXISTENCE OF ALL UTILITIES AND TO OBTAIN PERMISSION FROM THE UTILITIES TO EXCAVATE. THE CONTRACTOR SHALL BE RESPONSIBLE FOR OBTAINING ALL NECESSARY PERMITS AND APPROVALS FROM THE LOCAL AUTHORITIES. THE CONTRACTOR SHALL BE RESPONSIBLE FOR OBTAINING ALL NECESSARY PERMITS AND APPROVALS FROM THE LOCAL AUTHORITIES. THE CONTRACTOR SHALL BE RESPONSIBLE FOR OBTAINING ALL NECESSARY PERMITS AND APPROVALS FROM THE LOCAL AUTHORITIES.



NO.	DATE	BY	REVISIONS
3	2025-02-09	PS	ISSUED FOR TENDER
2	2025-11-14	PS	ISSUED FOR FINAL REVIEW
1	2025-01-17	PS	ISSUED FOR 75% REVIEW

PROJECT: **Kawartha Lakes CAMPUS BLOCK SITE BEAUTIFICATION**

GRADING PLAN

DRAWN BY:	T. VALDOCK	CHECKED BY:	P. BROOKS	PROJECT:	C14-0059
DESIGNED BY:	T. VALDOCK	APPROVED BY:	L. CULLEN	DRAWING NO.:	
SCALE:	1:200	DATE:	JULY 2024		

REVISIONS:
 DRAWN ON A 500M FACE OF A3000 SIZE ON 50% REDUCING OF A3000 STREET AND CAMBRIDGE STREET.
 WORK TO BE DONE IN EAST AND WEST SIDE ON NORTH EAST SIDE OF CAMBRIDGE STREET AND CAMBRIDGE STREET.

